

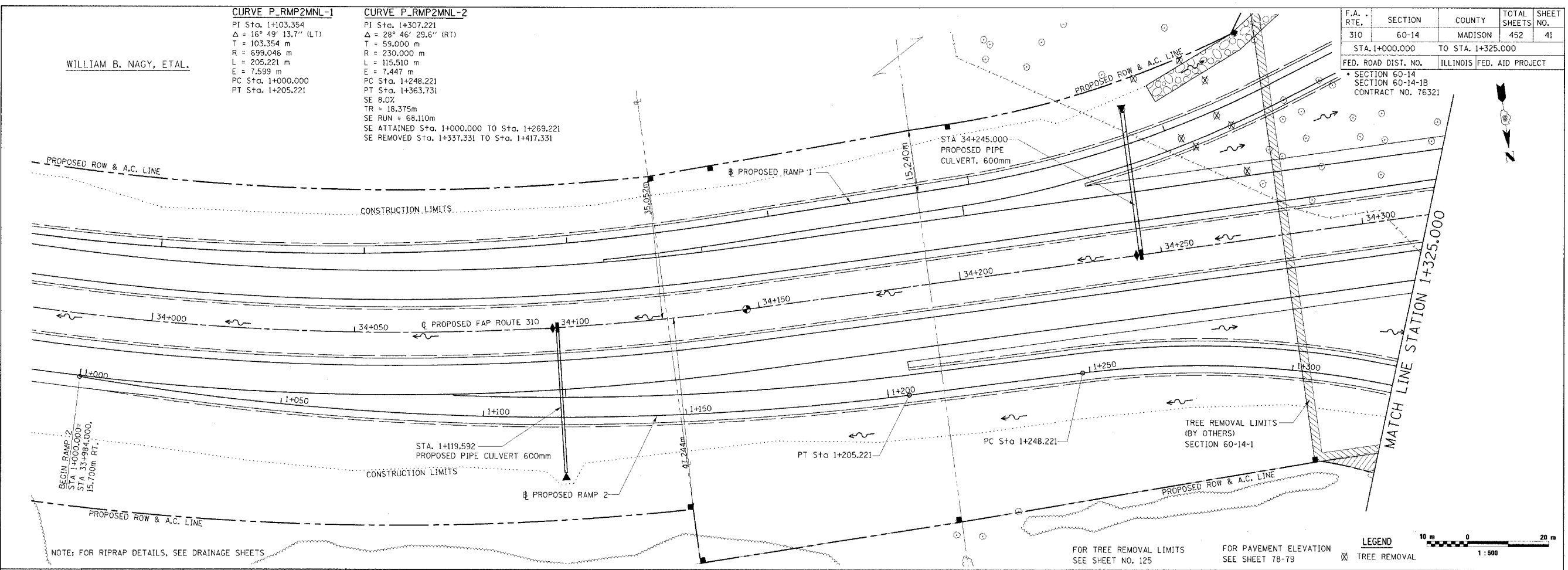
WILLIAM B. NAGY, ETAL.

CURVE P_RMP2MNL-1
 PI Sta. 1+103.354
 $\Delta = 16^\circ 49' 13.7''$ (LT)
 T = 103.354 m
 R = 699.046 m
 L = 205.221 m
 E = 7.599 m
 PC Sta. 1+000.000
 PT Sta. 1+205.221

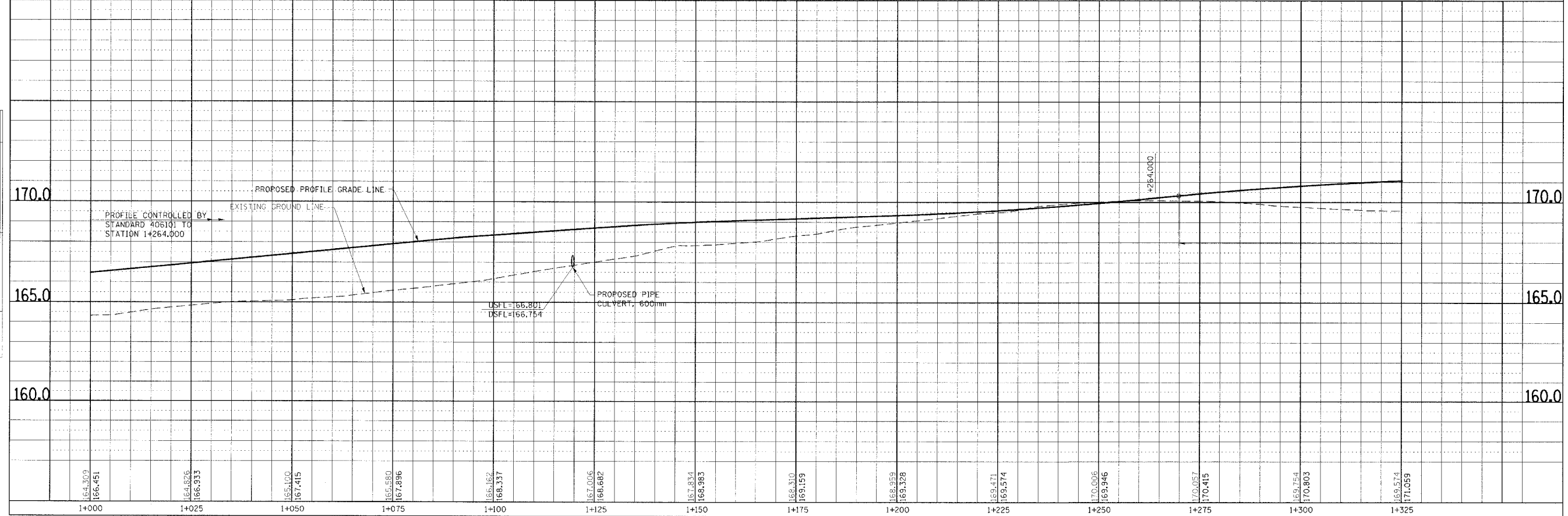
CURVE P_RMP2MNL-2
 PI Sta. 1+307.221
 $\Delta = 28^\circ 46' 29.6''$ (RT)
 T = 59.000 m
 R = 230.000 m
 L = 115.510 m
 E = 7.447 m
 PC Sta. 1+248.221
 PT Sta. 1+363.731
 SE 8.0%
 TR = 18.375m
 SE RUN = 68.110m
 SE ATTAINED Sta. 1+000.000 TO Sta. 1+269.221
 SE REMOVED Sta. 1+337.331 TO Sta. 1+417.331

F.A. RTE.	SECTION	COUNTY	TOTAL SHEETS	SHEET NO.
310	60-14	MADISON	452	41
STA. 1+000.000		TO STA. 1+325.000		
FED. ROAD DIST. NO.		ILLINOIS FED. AID PROJECT		
SECTION 60-14		SECTION 60-14-1B		
		CONTRACT NO. 76321		

FINAL SURVEY	BY	DATE
SURVEY PLOTTED		
NOTE BOOK TEMPLATE		
AREAS CHECKED		
NO.		



ORIGINAL SURVEY	BY	DATE
SURVEY PLOTTED		
NOTE BOOK TEMPLATE		
AREAS CHECKED		
NO.		



PLAN & PROFILE, RAMP 2, STA. 1+000.000 TO STA. 1+325.000