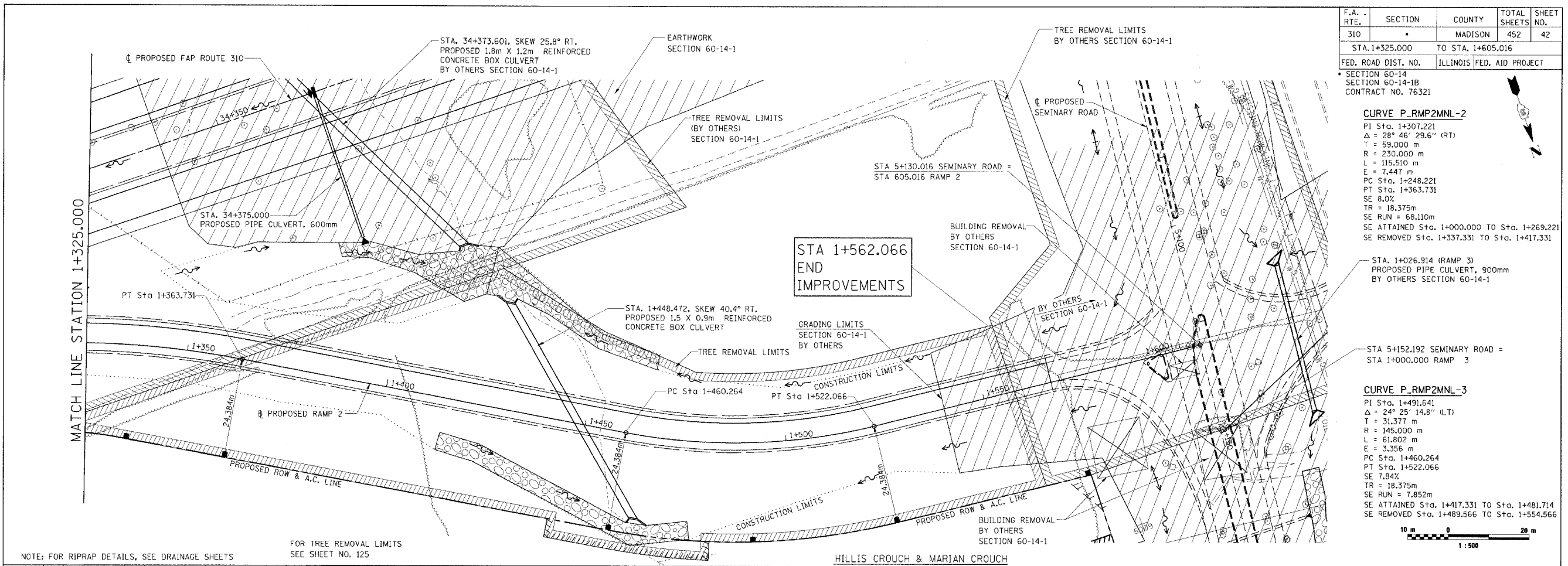


DATE  
BY  
FINAL SURVEYED SURVEY PLOTTED  
NOTE BOOK TEMPLATE  
AREAS CHECKED

DATE  
BY  
ORIGINAL SURVEYED SURVEY PLOTTED  
NOTE BOOK TEMPLATE  
AREAS CHECKED



F.A. RTE.	SECTION	COUNTY	TOTAL SHEETS	SHEET NO.
310		MADISON	452	42
STA. 1+325.000		TO STA. 1+605.016		
FED. ROAD DIST. NO.		ILLINOIS		FED. AID PROJECT
SECTION 60-14 SECTION 60-14-1B CONTRACT NO. 76321				

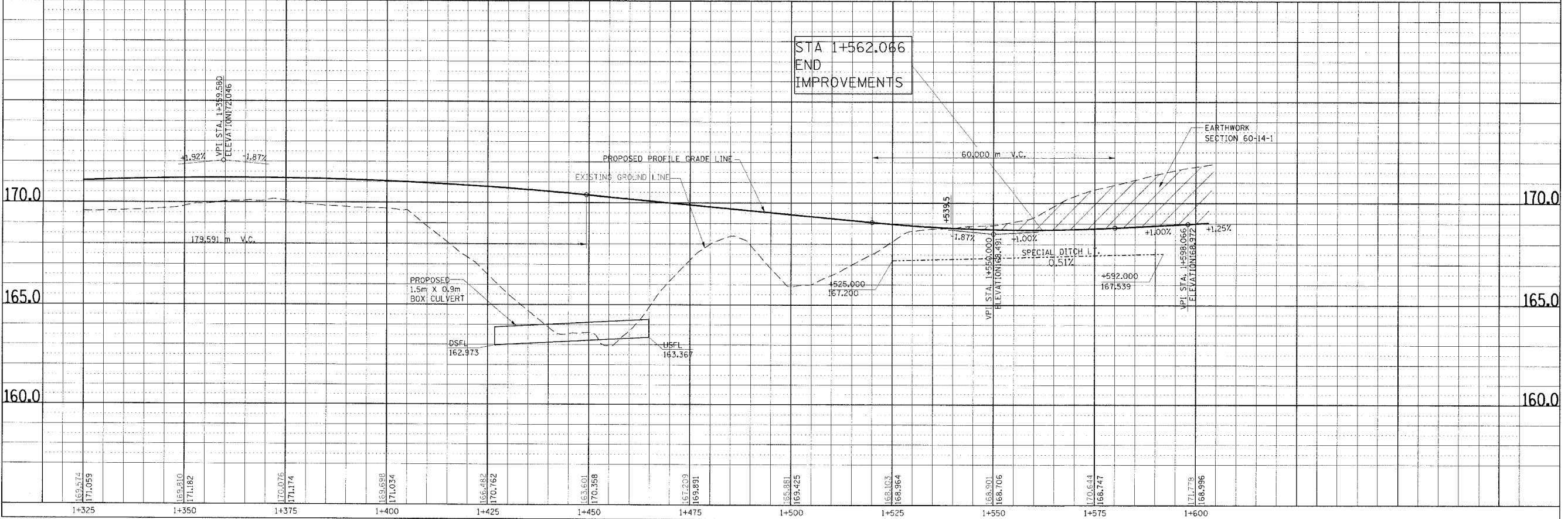
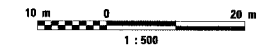
**CURVE P\_RMP2MNL-2**

PI Sta. 1+307.221  
 $\Delta = 28^\circ 46' 29.6''$  (RT)  
 T = 59.000 m  
 R = 230.000 m  
 L = 115.510 m  
 E = 7.447 m  
 PC Sta. 1+248.221  
 PT Sta. 1+363.731  
 SE 8.0%  
 TR = 18.375m  
 SE RUN = 68.110m  
 SE ATTAINED Sta. 1+000.000 TO Sta. 1+269.221  
 SE REMOVED Sta. 1+337.331 TO Sta. 1+417.331

STA. 1+026.914 (RAMP 3)  
 PROPOSED PIPE CULVERT, 900mm  
 BY OTHERS SECTION 60-14-1

**CURVE P\_RMP2MNL-3**

PI Sta. 1+491.641  
 $\Delta = 24^\circ 25' 14.8''$  (LT)  
 T = 31.377 m  
 R = 145.000 m  
 L = 61.802 m  
 E = 3.356 m  
 PC Sta. 1+460.264  
 PT Sta. 1+522.066  
 SE 7.84%  
 TR = 18.375m  
 SE RUN = 7.852m  
 SE ATTAINED Sta. 1+417.331 TO Sta. 1+481.714  
 SE REMOVED Sta. 1+489.566 TO Sta. 1+554.566



PLAN & PROFILE, RAMP 2, STA. 1+325.000 TO STA. 1+605.016