

F.A.P. RTE.	SECTION	COUNTY	TOTAL SHEETS	SHEET NO.
310		MADISON	452	59
STA. 34+650.000		TO STA. 35+000.000		
FED. ROAD DIST. NO.		ILLINOIS FED. AID PROJECT		

STA. 34+725.000
 PROPOSED PIPE CULVERT
 CLASS A, TYPE 2, 900mm
 MEDIAN INLET, STD. 604106
 PIPE TEE, 900MM W/ 900MM RISER
 STD. 542606, ONE END CAPPED
 END SECTIONS, 900mm
 USFL 171.924
 DSFL 171.693

STA. 34+890.465
 PROPOSED PIPE CULVERT
 CLASS A, TYPE 2, 300mm
 INLET, TYPE A,
 W/ TYPE 1 FRAME, OPEN LID
 PIPE DRAIN, 300mm
 METAL END SECTIONS, 300mm
 USFL 170.780
 DSFL 168.619
 (BY OTHERS)

STA. 34+970.332
 PROPOSED PIPE CULVERT
 CLASS A, TYPE 2, 300mm
 INLET, TYPE A,
 W/ TYPE 1 FRAME, OPEN LID
 END SECTIONS, 300mm
 USFL 169.988
 DSFL 169.851
 (BY OTHERS)

STA. 34+875.000
 PROPOSED PIPE CULVERT
 CLASS A, TYPE 1, 600mm
 INLET BOX, TYPE C, STD. 524511
 END SECTIONS, 600mm
 USFL 170.821
 DSFL 170.553

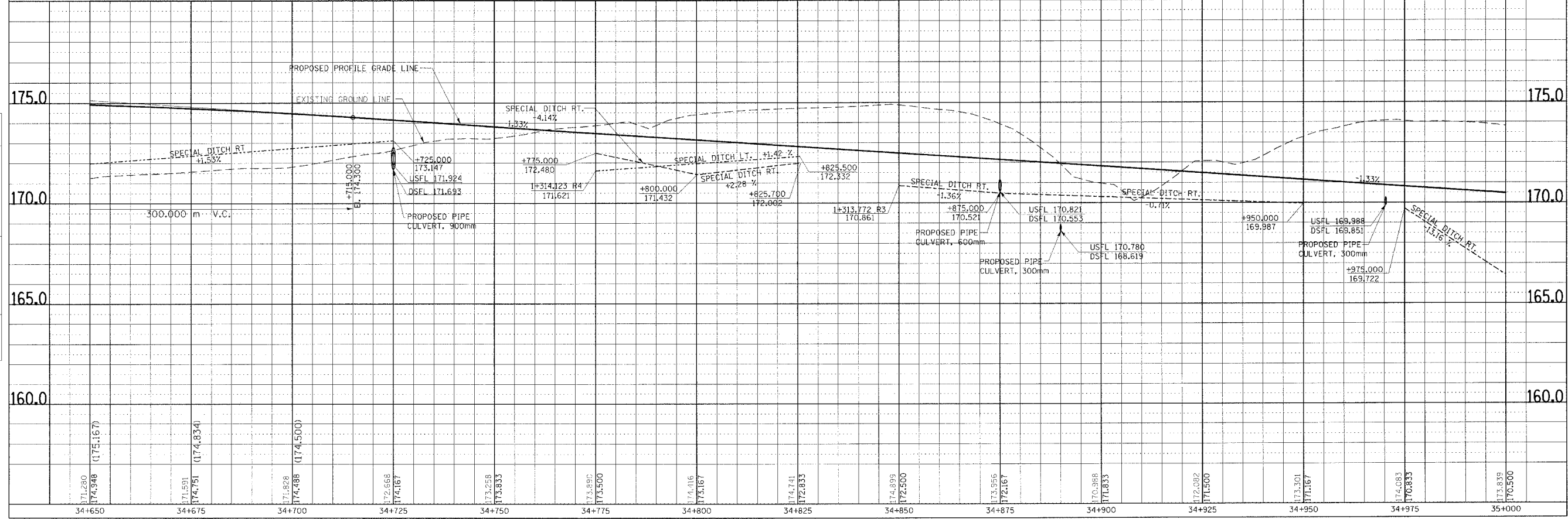
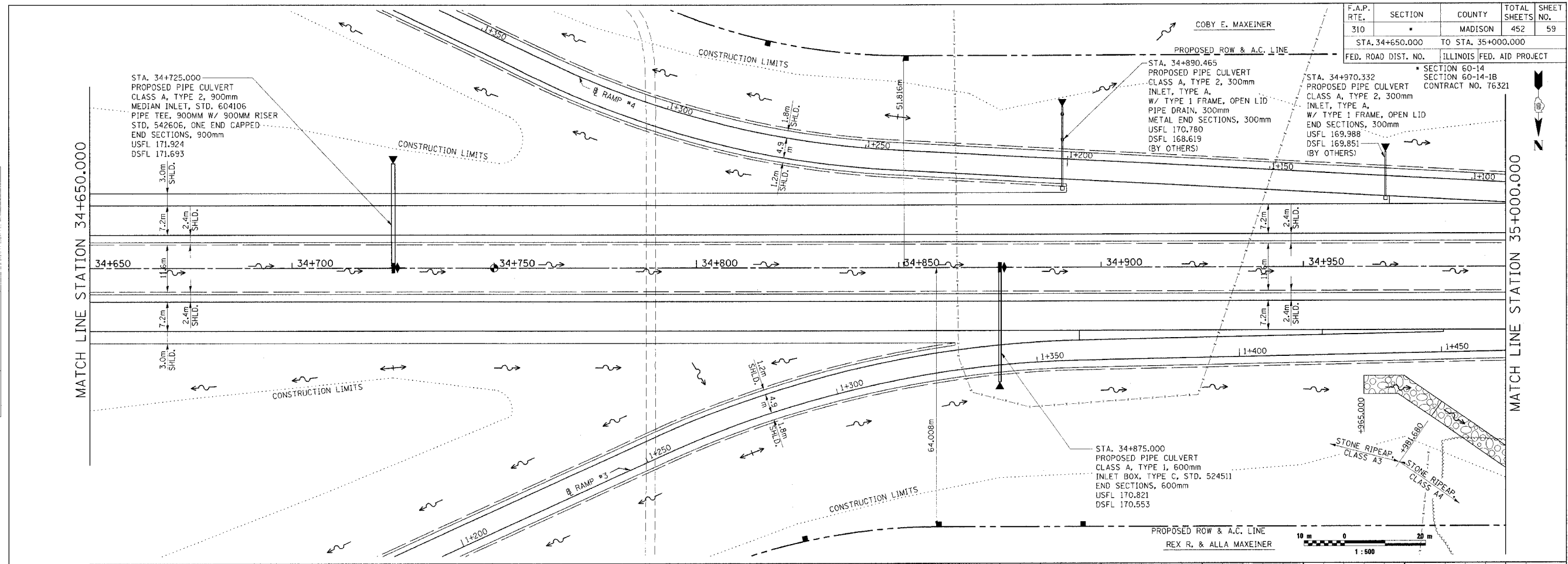
STONE RIPEAP
 CLASS A3
 +881.800

STONE RIPEAP
 CLASS A4
 +881.800

MATCH LINE STATION 34+650.000

MATCH LINE STATION 35+000.000

FINAL SURVEY PLOTTED	BY	DATE
NOTE BOOK TEMPLATE		
AREAS CHECKED		
NO.		



ORIGINAL SURVEY PLOTTED	BY	DATE
NOTE BOOK TEMPLATE		
AREAS CHECKED		
NO.		

DRAINAGE PLAN & PROFILE, FAP ROUTE 310, STA. 34+650.000 TO STA. 35+000.000

C:\p01\work\171200\171200.dwg 05/17/2006 09:31:25