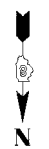
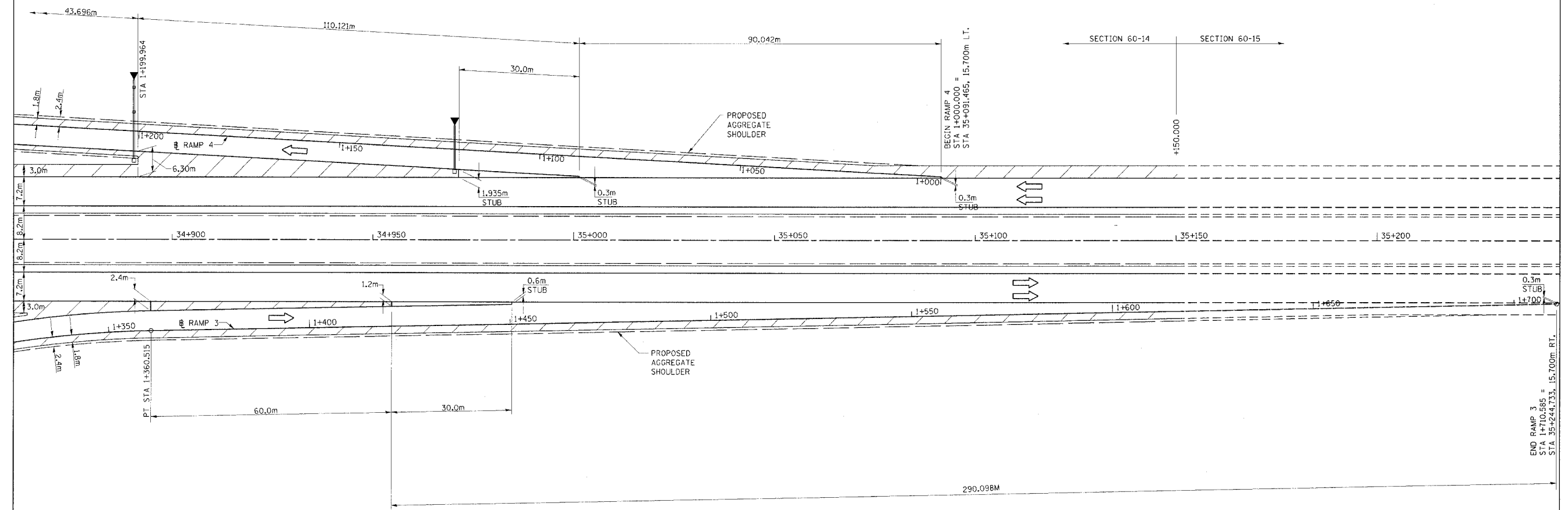


F.A.P. RTE.	SECTION	COUNTY	TOTAL SHEETS	SHEET NO.
310		MADISON	452	77
STA.		TO STA.		
FED. ROAD DIST. NO.		ILLINOIS	FED. AID PROJECT	
		SECTION 60-14 SECTION 60-14-1B		



**CURVE P\_RMP4MNL-1**  
 PI Sta. 1+288.978  
 $\Delta = 22^\circ 22' 49.7''$  (RT)  
 T = 45.500 m  
 R = 230.000 m  
 L = 89.841 m  
 E = 4.457 m  
 PC Sta. 1+243.477  
 PT Sta. 1+333.318  
 SE 8.0%  
 TR = 18.375m  
 SE RUN = 37.041m  
 SE ATTAINED Sta. 1+189.877 TO Sta. 1+269.877  
 SE REMOVED Sta. 1+306.918 TO Sta. 1+386.918



**CURVE P\_RMP3MNL-1**  
 PI Sta. 1+308.272  
 $\Delta = 23^\circ 21' 15.2''$  (RT)  
 T = 53.735 m  
 R = 260.000 m  
 L = 105.978 m  
 E = 5.495 m  
 PC Sta. 1+254.537  
 PT Sta. 1+360.515  
 SE 8.0%  
 TR = 18.375m  
 SE RUN = 39.578m  
 SE ATTAINED Sta. 1+200.937 TO Sta. 1+280.937  
 SE REMOVED Sta. 1+320.515 TO Sta. 1+400.515

PROPOSED BITUMINOUS SHOULDER



REVISIONS	
NAME	DATE

ILLINOIS DEPARTMENT OF TRANSPORTATION  
**INTERCHANGE RAMPS 3 & 4**  
**PAVING DETAIL**  
 FAP ROUTE 310  
 FAP ROUTE 310 SECTION 60-14  
 MADISON COUNTY  
 DRAWN BY BANDY  
 CHECKED BY STEUART  
 DATE