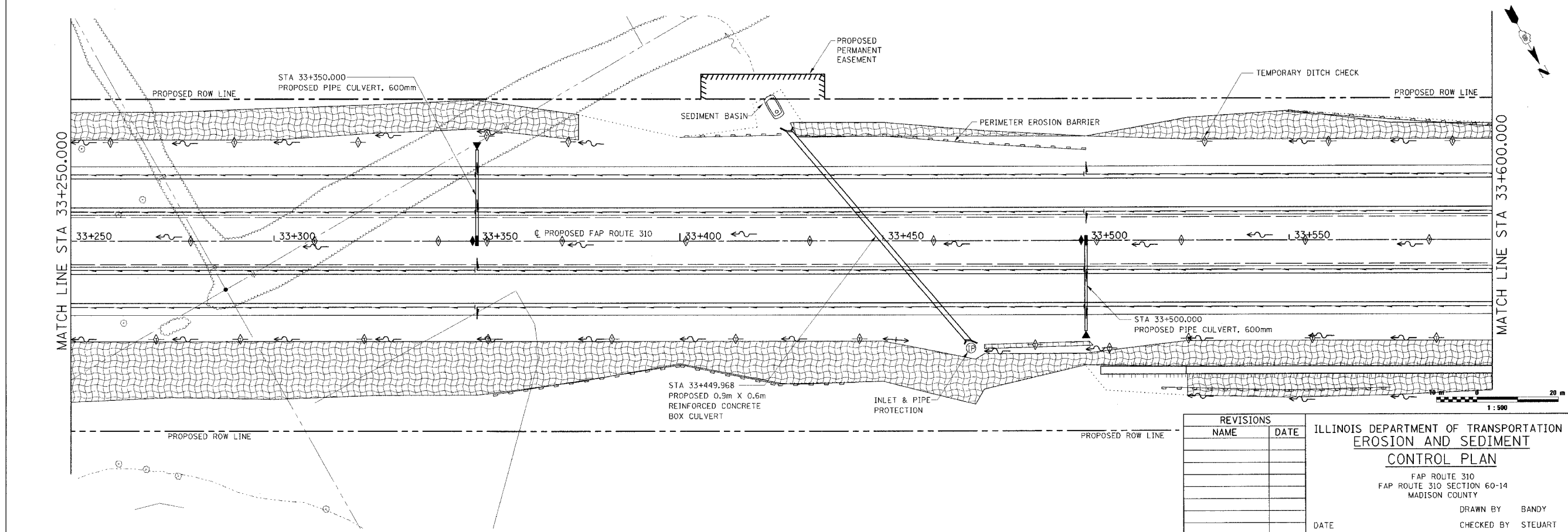
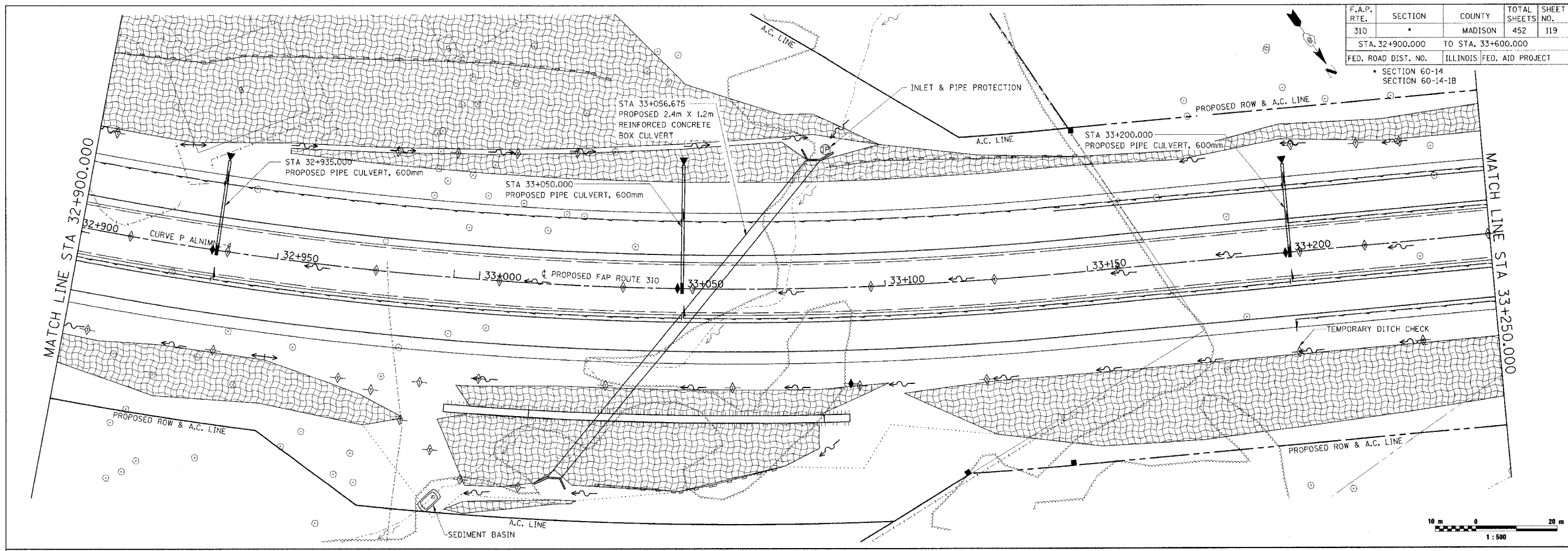


F.A.P. RTE.	SECTION	COUNTY	TOTAL SHEETS	SHEET NO.
310		MADISON	452	119
STA. 32+900.000		TO STA. 33+600.000		
FED. ROAD DIST. NO.	ILLINOIS	FED. AID PROJECT		

SECTION 60-14
SECTION 60-14-1B



REVISIONS	
NAME	DATE

ILLINOIS DEPARTMENT OF TRANSPORTATION
EROSION AND SEDIMENT
CONTROL PLAN
FAP ROUTE 310
FAP ROUTE 310 SECTION 60-14
MADISON COUNTY
DRAWN BY BANDY
CHECKED BY STEUART
DATE

EROSION AND SEDIMENT CONTROL PLAN, FAP ROUTE 310, STA. 32+900.000 TO STA. 33+600.000

DATE PLOTTED: 10/23/06 10:02:37 AM