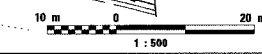
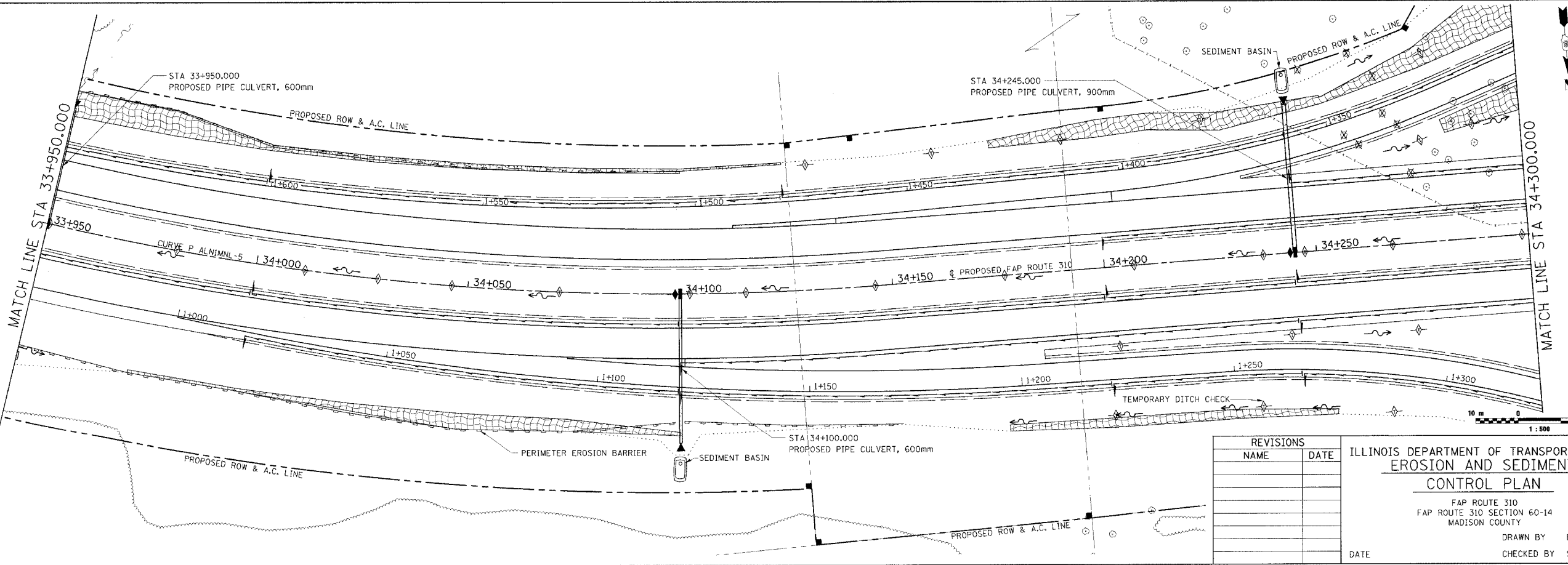
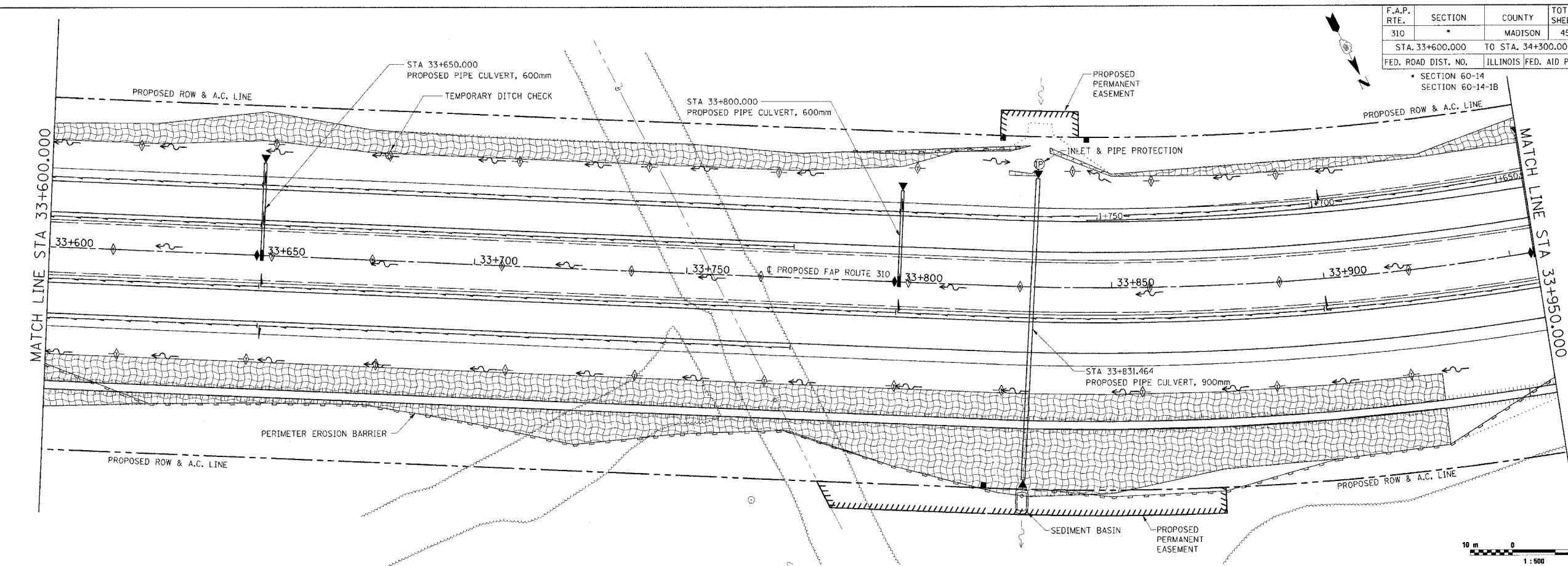


F.A.P. RTE.	SECTION	COUNTY	TOTAL SHEETS	SHEET NO.
310		MADISON	452	120
STA. 33+600.000		TO STA. 34+300.000		
FED. ROAD DIST. NO.		ILLINOIS FED. AID PROJECT		

SECTION 60-14
SECTION 60-14-1B



REVISIONS	
NAME	DATE

ILLINOIS DEPARTMENT OF TRANSPORTATION
EROSION AND SEDIMENT
CONTROL PLAN

FAP ROUTE 310
FAP ROUTE 310 SECTION 60-14
MADISON COUNTY

DRAWN BY BANDY
CHECKED BY STEUART

DATE

EROSION AND SEDIMENT CONTROL PLAN, FAP ROUTE 310, STA. 33+600.000 TO STA. 34+300.000

M:\Projects\2006\10-38-06-01.dwg 2/27/2006 10:38:06 AM