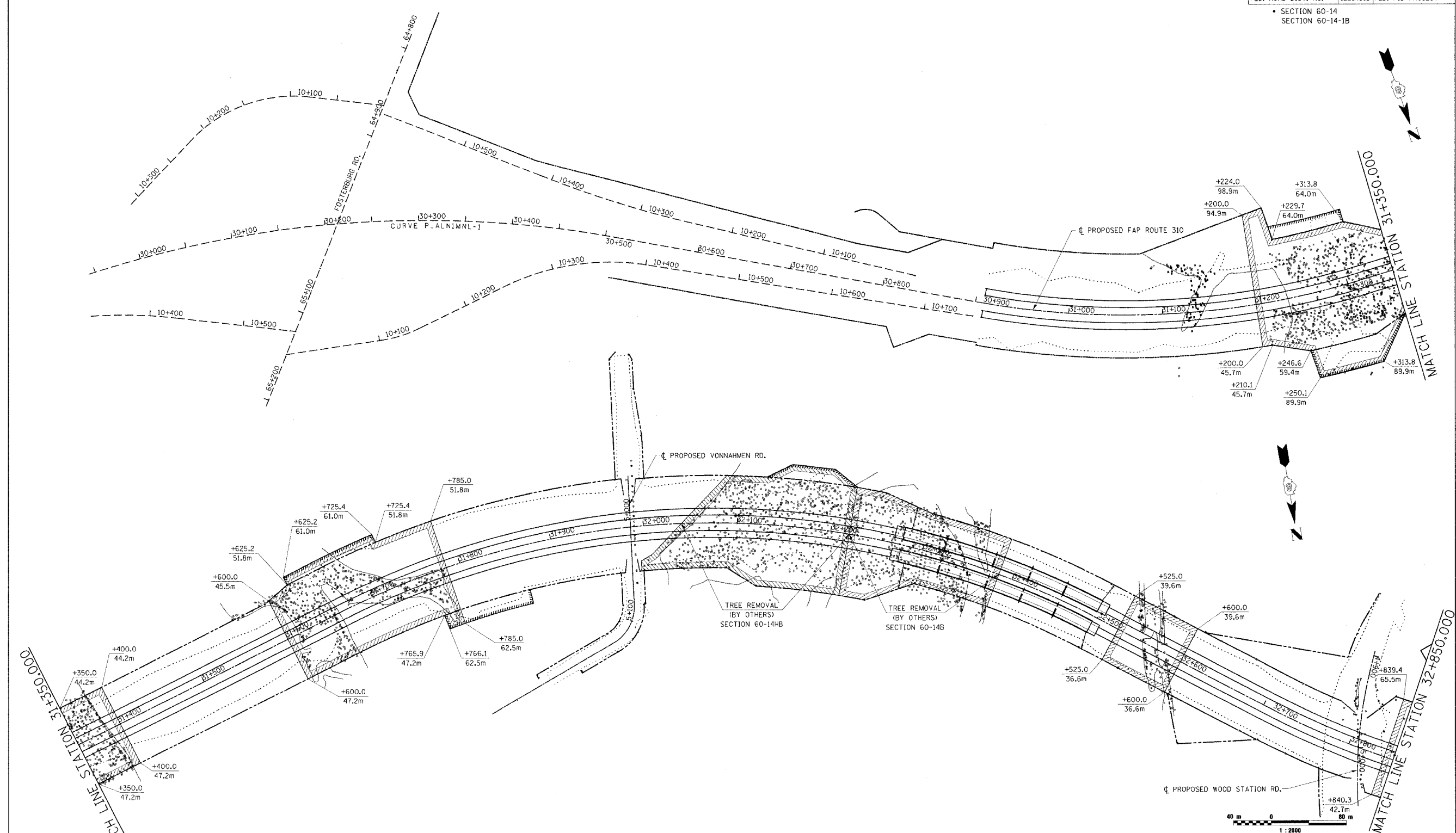


F.A.P. RTE.	SECTION	COUNTY	TOTAL SHEETS	SHEET NO.
310		MADISON	452	124
STA. 29+943.171		TO STA. 32+850.000		
FED. ROAD DIST. NO.		ILLINOIS FED. AID PROJECT		
SECTION 60-14 SECTION 60-14-1B				



TREE REMOVAL (BY OTHERS) SECTION 60-14-1B

TREE REMOVAL (BY OTHERS) SECTION 60-14B

LIMITS OF TREE REMOVAL



REVISIONS	
NAME	DATE

ILLINOIS DEPARTMENT OF TRANSPORTATION

**TREE REMOVAL AREAS**

FAP ROUTE 310  
FAP ROUTE 310 SECTION 60-14  
MADISON COUNTY

DRAWN BY BANDY  
CHECKED BY STEUART

DATE

TREE REMOVAL AREAS, FAP ROUTE 310, STA. 29+943.171 TO STA. 32+850.000

15/17/2006 10:07:06 AM