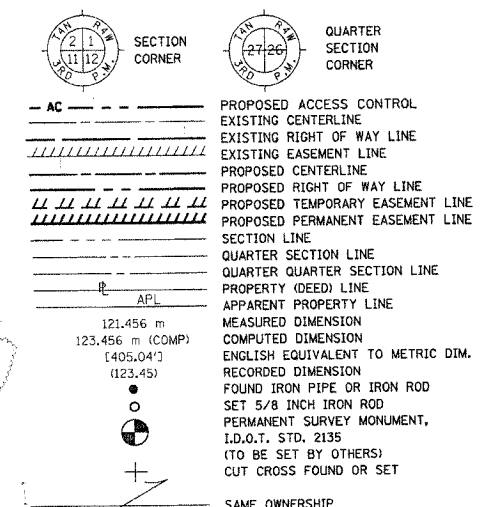


PART OF THE SE 1/4 OF SECTION 29, T6N, R9W, OF THE 3RD PM, MADISON COUNTY, ILLINOIS

BEARINGS SHOWN HEREON ARE BASED ON SURVEY CONTROL DATA AS PROVIDED BY THE ILLINOIS DEPARTMENT OF TRANSPORTATION.

FAP ROUTE	SECTION	COUNTY	TOTAL SHEET NO.
310	60-14	MADISON	452 131

LEGEND



- STAKING OF PROPOSED RIGHT OF WAY, SET 5/8 INCH METAL ROD WITH DIVISION OF HIGHWAY SURVEY MARKER TO MONUMENT THE POSITION SHOWN, IDENTIFIED BY INSCRIPTION DATA AND SURVEYORS REGISTRATION NUMBER.
- M STAKING OF PROPOSED RIGHT OF WAY IN CULTIVATED AREAS, SET 5/8 INCH METAL ROD WITH DIVISION OF HIGHWAY SURVEY MARKER 20 INCHES BELOW GROUND SURFACE TO MONUMENT THE POSITION SHOWN, IDENTIFIED BY INSCRIPTION DATA AND SURVEYORS REGISTRATION NUMBER.

STATE OF ILLINOIS)
COUNTY OF) SS

THIS IS TO CERTIFY THAT I, THOMAS M. DRONE AN ILLINOIS PROFESSIONAL LAND SURVEYOR, HAS SURVEYED THE PLAT OF HIGHWAYS SHOWN HEREON IN SECTIONS 29 & 32, TOWNSHIP 6 NORTH, RANGE 9 WEST, OF THE THIRD PRINCIPAL MERIDIAN, MADISON COUNTY, THAT THE SURVEY IS TRUE AND COMPLETE AS SHOWN TO THE BEST OF MY KNOWLEDGE AND BELIEF, THAT THE PLAT CORRECTLY REPRESENTS SAID SURVEY, THAT ALL MONUMENTS FOUND AND ESTABLISHED ARE OF PERMANENT QUALITY AND OCCUPY THE POSITIONS SHOWN THEREON AND THAT THE MONUMENTS ARE SUFFICIENT TO ENABLE THE SURVEY TO BE RETRACED. MADE FOR THE DEPARTMENT OF TRANSPORTATION, STATE OF ILLINOIS.

DATED April 22, 2004
THOMAS M. DRONE
THOMAS M. DRONE, PLS #2273



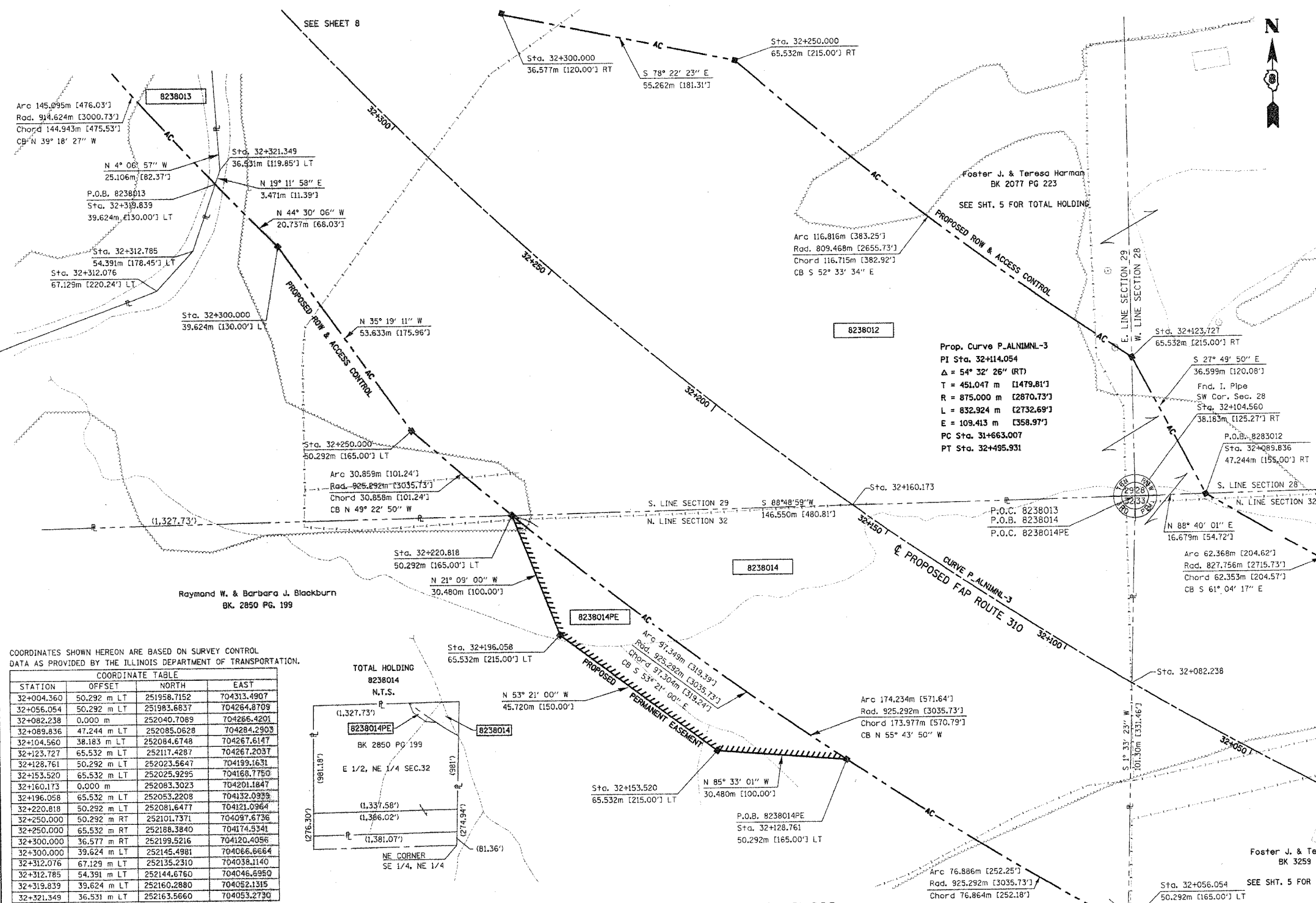
HURST-ROSCHE ENGINEERS, INC.
2657 W. LAWRENCE - SPRINGFIELD, ILLINOIS 62704
217-787-1189

ILLINOIS DEPARTMENT OF TRANSPORTATION
PLAT OF HIGHWAYS
FAP ROUTE 310 (IL 255)
SECTION 60-14
MADISON COUNTY
JOB NO. R-98-038-92
STATION 32+050 TO STATION 32+300

SCALE 1:500
SHEET 7 OF 38

ILLINOIS DEPARTMENT OF TRANSPORTATION
DIVISION OF HIGHWAYS/DISTRICT 8
1102 EASTPORT PLAZA DRIVE
COLLINGSVILLE, ILLINOIS 62234-6198

SHEET 1 OF IS A COVER SHEET AND IS NOT RECORDED



COORDINATES SHOWN HEREON ARE BASED ON SURVEY CONTROL DATA AS PROVIDED BY THE ILLINOIS DEPARTMENT OF TRANSPORTATION.

STATION	OFFSET	NORTH	EAST
32+004.360	50.292 m LT	251958.7152	704313.4907
32+056.054	50.292 m LT	251983.6837	704264.8709
32+082.238	0.000 m	252040.7089	704266.4201
32+089.836	47.244 m LT	252085.0628	704284.2903
32+104.560	38.183 m LT	252084.6748	704267.6147
32+123.727	65.532 m LT	252117.4287	704267.2037
32+128.761	50.292 m LT	252023.5647	704199.1631
32+153.520	65.532 m LT	252025.9295	704168.7750
32+160.173	0.000 m	252083.3023	704201.1847
32+196.058	65.532 m LT	252053.2208	704132.0939
32+220.818	50.292 m LT	252081.6477	704121.0964
32+250.000	50.292 m RT	252101.7371	704097.6736
32+250.000	65.532 m RT	252188.3840	704174.3341
32+300.000	36.577 m RT	252199.5216	704120.4056
32+300.000	39.624 m LT	252145.4981	704066.6664
32+312.076	67.129 m LT	252135.2310	704038.1140
32+312.785	54.391 m LT	252144.6760	704046.6980
32+319.839	39.624 m LT	252160.2880	704052.1315
32+321.349	36.531 m LT	252163.5660	704053.2730

PART OF THE NE 1/4 OF SECTION 32, T6N, R9W, OF THE 3RD PM, MADISON COUNTY, ILLINOIS

PARCEL NO.	OWNER	TOTAL HOLDING	R.O.W. REQUIRED	PREVIOUSLY DEDICATED	REMAINDER	EASEMENTS		EASEMENT PURPOSE	PERMANENT TAX NUMBER	PROPERTY ACQUIRED BY
						TEMP	PERM			
8238012	Foster J. & Teresa Harman Title Report MA-2694, 2696	23.980 Ac	8.3917 Ac 365,542 sf	1.1543 Ac	NORTHEAST 13.3092 Ac SOUTHWEST 1.4383 Ac SOUTH 0.8408 Ac	TE-A 0.0078 Ac 340 sf TE-B 0.0224 Ac 976 sf TE-C 0.1176 Ac 5,123 sf		Entrance Construction Entrance Construction Demolition	20-1-02-28-00-000-008 20-1-02-33-00-000-001 20-1-02-29-00-000-014	C.C. 03-ED-12
8238014	Raymond W. & Barbara J. Blackburn Title Report MA-2701	40.121 Ac	1.9447 Ac 84,711 sf	0	38.176 Ac		0.2665 Ac 11,609 sf	Drainage	20-1-02-32-00-000-004 -.001 & -.004	BK 4554 Pg. 3901

CONT. FROM SHT. 6

STATION	OFFSET	NORTH	EAST
5+081.999	0.000 m	252069.3877	704389.1183
5+000.000	0.000 m	251996.4318	704351.6849
5+106.019	25.464 m RT	252065.3660	704418.7300
5+115.000	10.668 m LT	252100.8778	704409.3697
5+115.000	13.716 m LT	252103.7268	704408.2864
5+131.200	10.668 m LT	252104.5123	704428.9681
5+131.200	12.192 m RT	252081.6525	704429.0451
5+131.200	0.000 m	252093.8444	704429.0040
5+141.551	15.240 m RT	252078.6394	704439.4062
5+149.763	12.192 m RT	252081.7150	704447.6079
5+149.763	15.240 m RT	252078.6670	704447.6182
5+218.632	7.691 m RT	252086.5191	704516.4905
5+218.524	12.263 m RT	252081.9468	704516.4150

DATE-TIME
JOB-SPEC
REF
REF

PLOT DATE: DATE-TIME