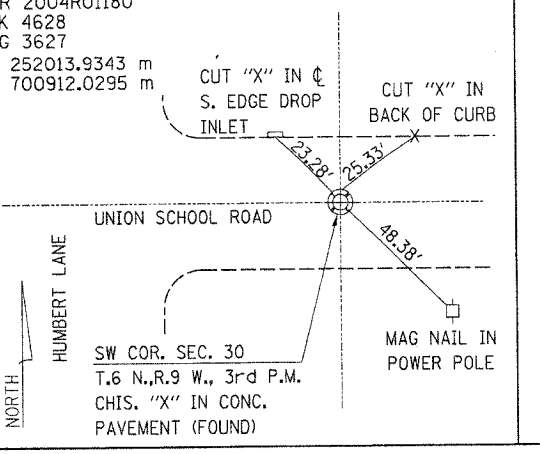
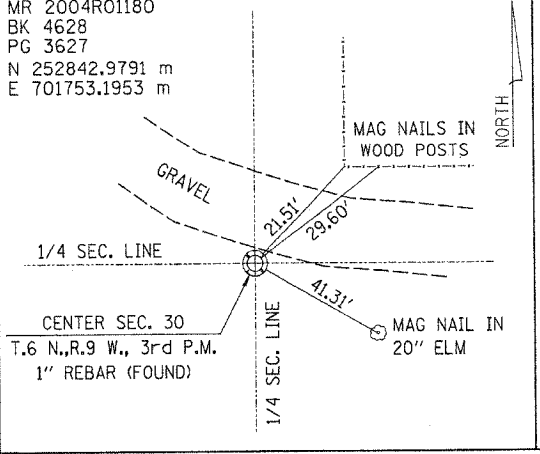
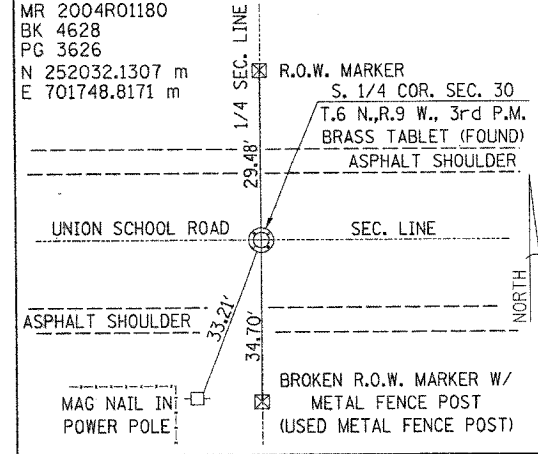
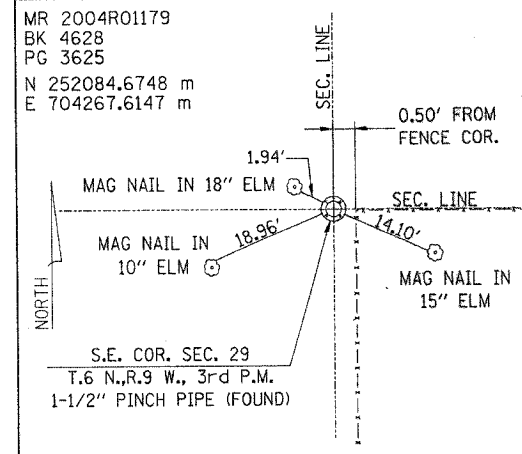
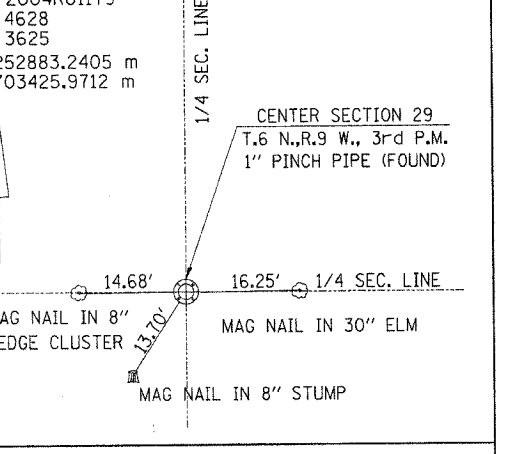
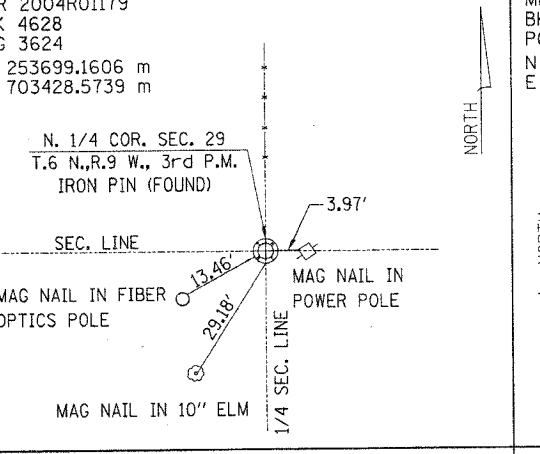
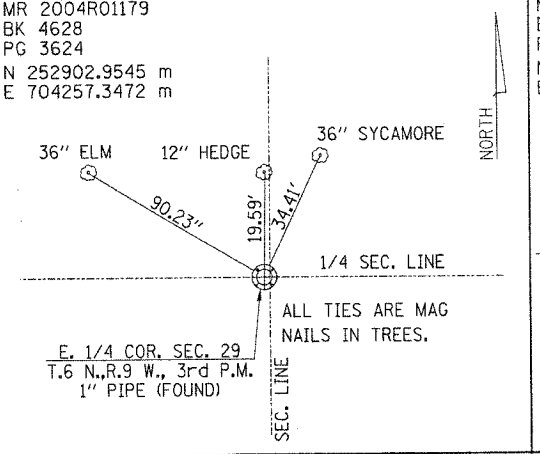
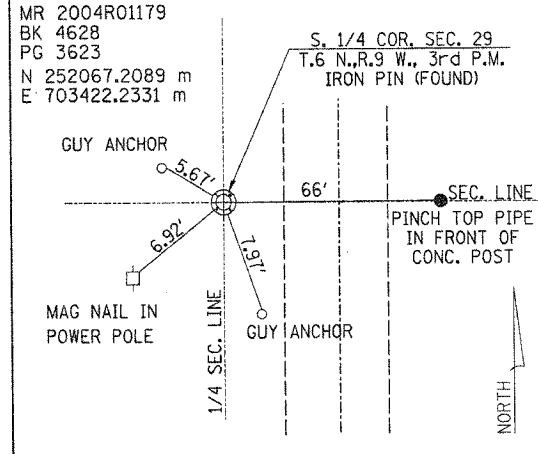
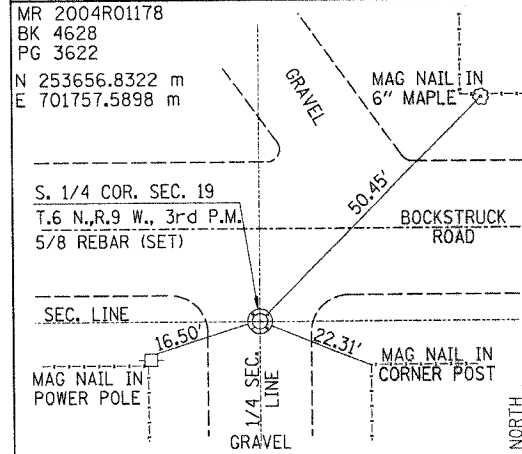
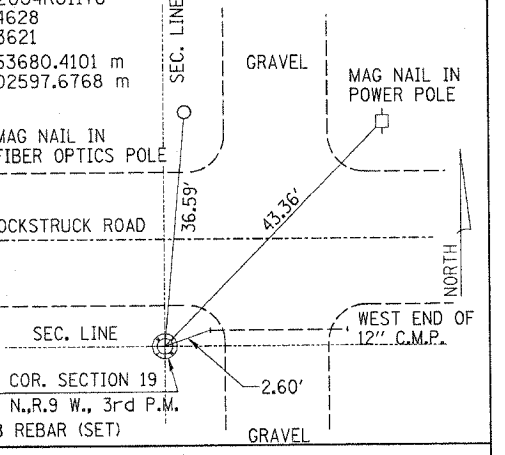
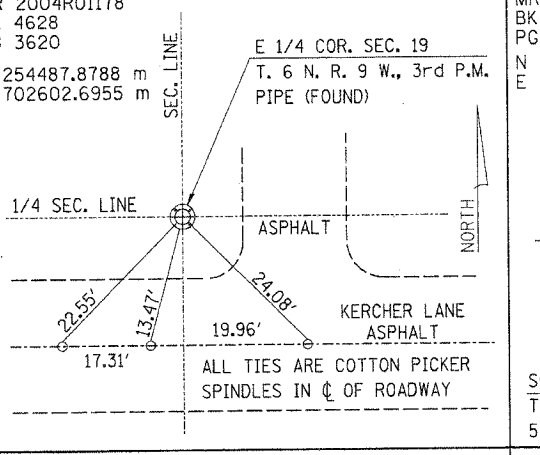
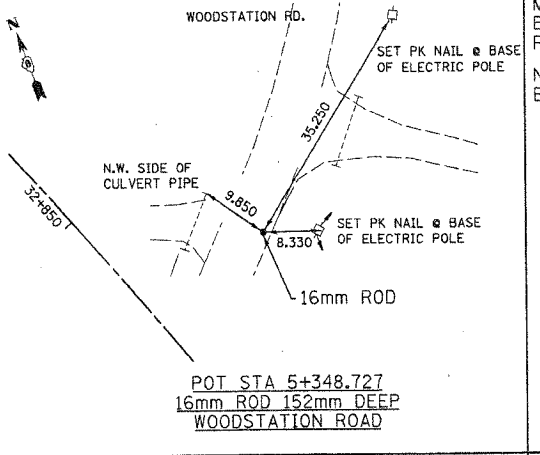
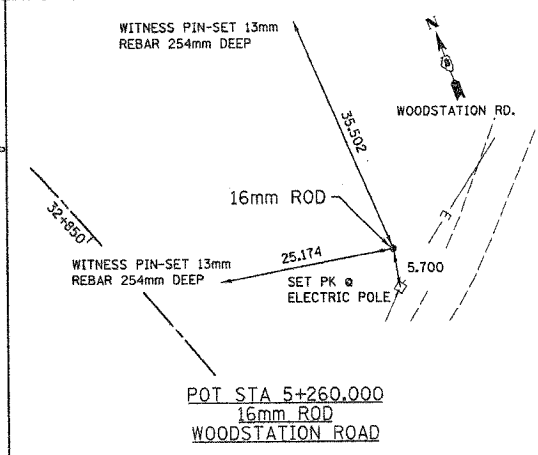
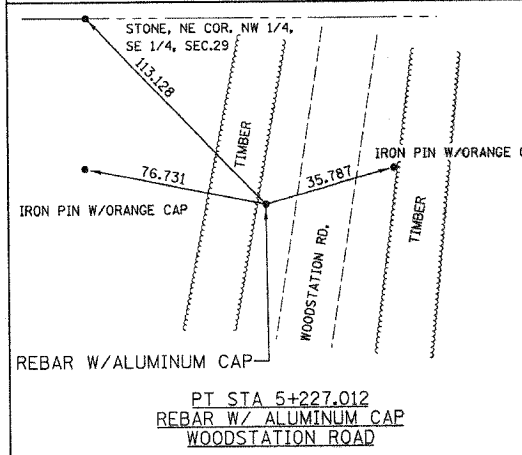
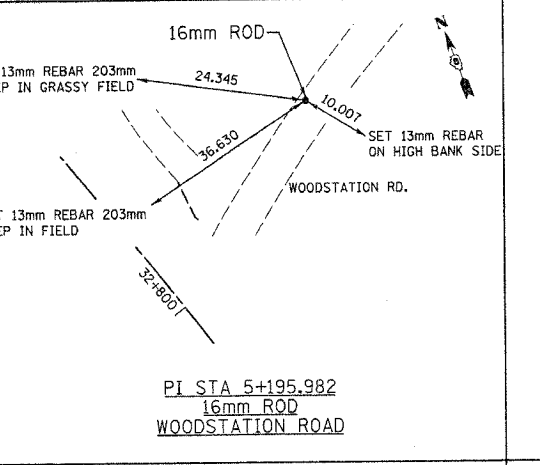
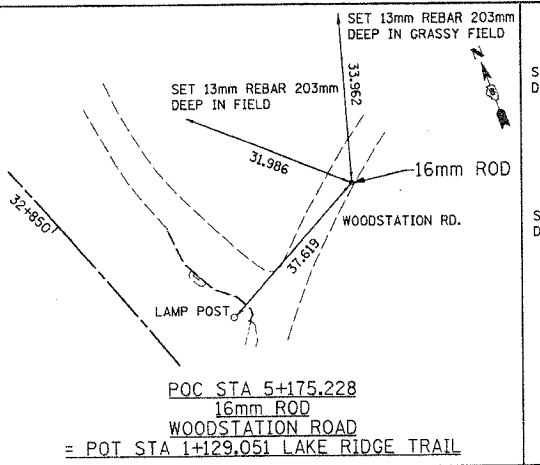
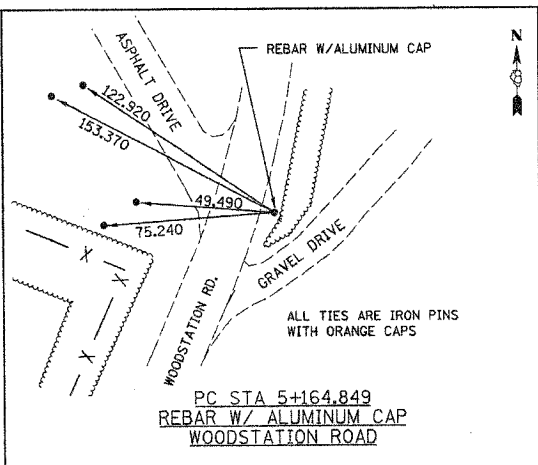
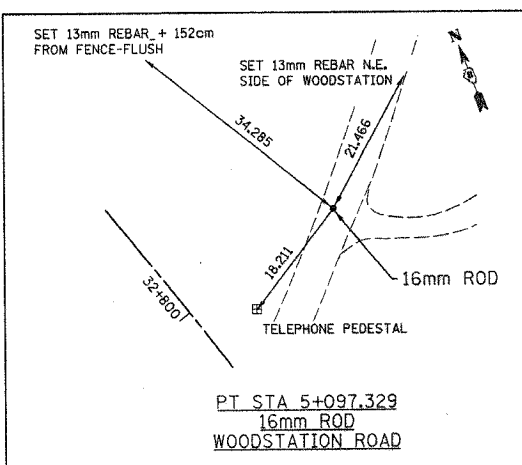


F.A.P. RTE.	SECTION	COUNTY	TOTAL SHEETS NO.
310		MADISON	452 149P
STA. _____ TO STA. _____			
FED. ROAD DIST. NO. _____		ILLINOIS FED. AID PROJECT	
* SECTION 60-14 SECTION 60-15			



HURST-ROSCHIE ENGINEERS, INC.
2657 W. LAWRENCE - SPRINGFIELD, ILLINOIS 62704
217-787-1199

ILLINOIS DEPARTMENT OF TRANSPORTATION

TIE POINTS

FAP ROUTE 310 (IL 255)
SECTION 60-14 / 60-15
MADISON COUNTY
JOB NO. R-98-038/039-92

SHEET 37 OF 38

ILLINOIS DEPARTMENT OF TRANSPORTATION
DIVISION OF HIGHWAYS/DISTRICT 8
1102 EASTPORT PLAZA DRIVE
COLLINGSVILLE, ILLINOIS 62234-6198

SHEET 1 OF 1 IS A COVER SHEET AND IS NOT RECORDED

TIE POINTS, FAP ROUTE 310

#DATAS
#DATE-TIME
#JOB-SPEC
#REF-REF
#REF-REF

PLOT DATE: #DATE-TIME