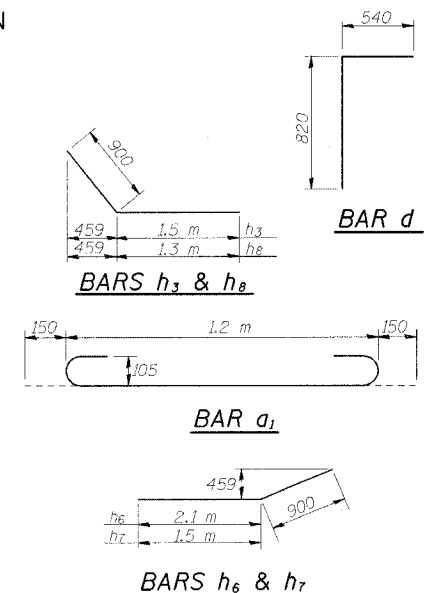
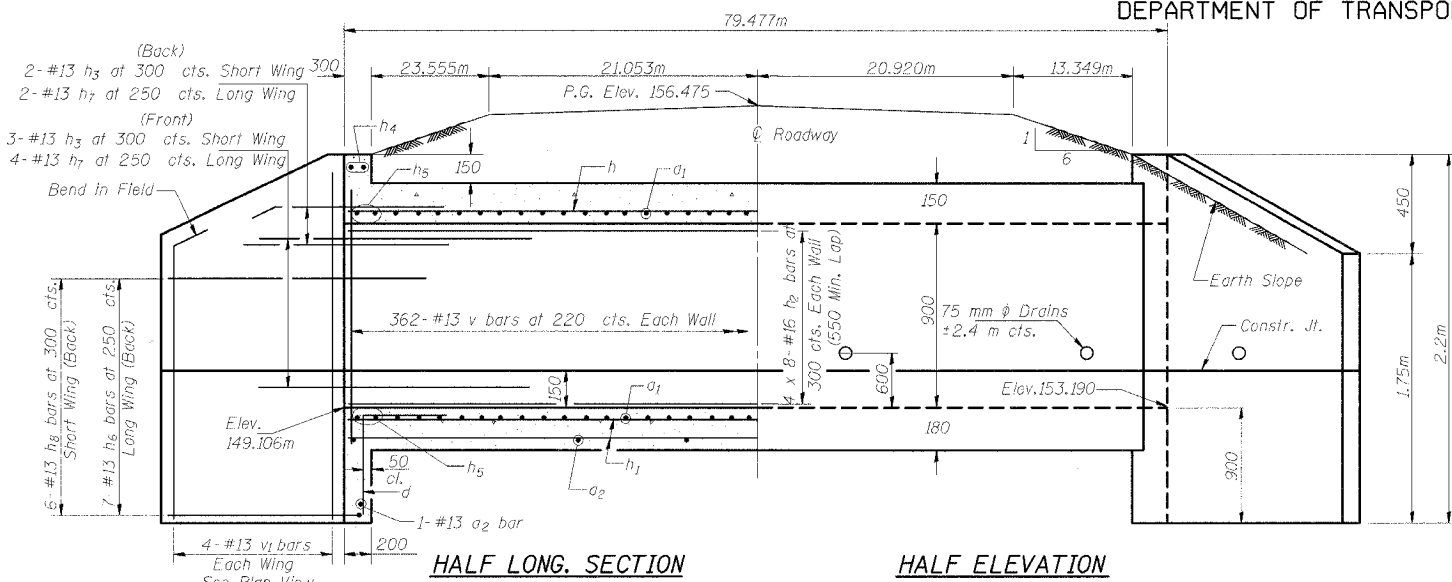


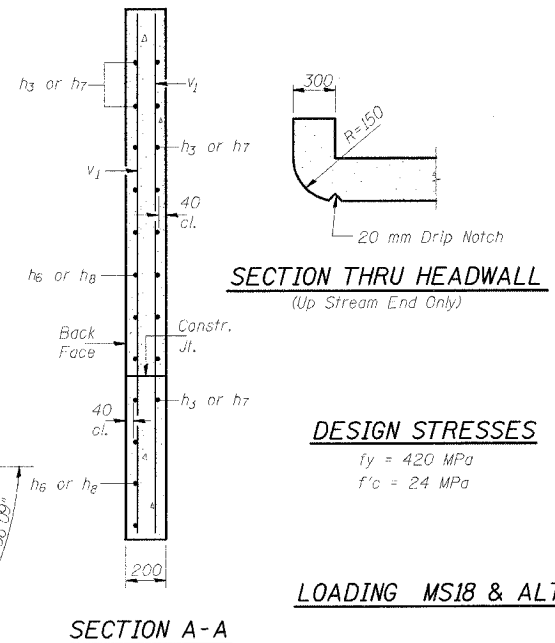
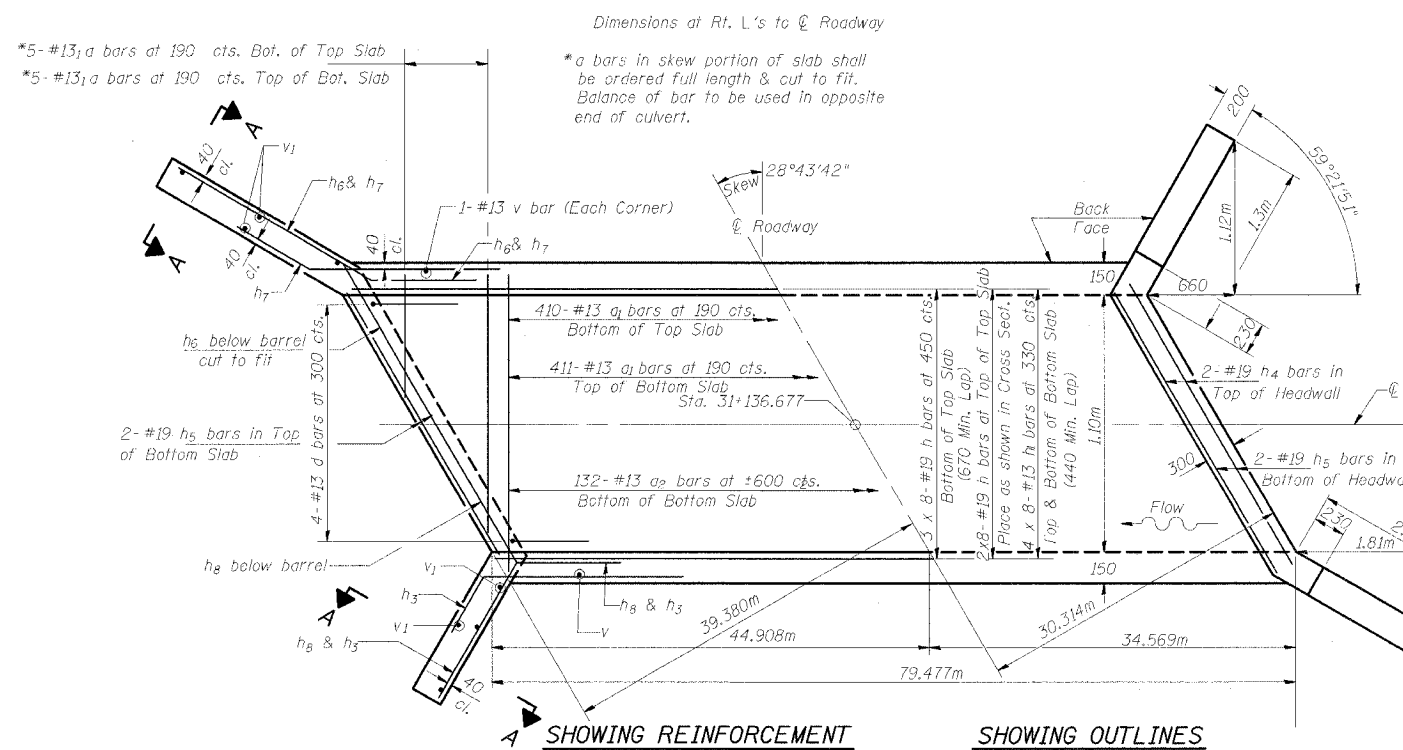
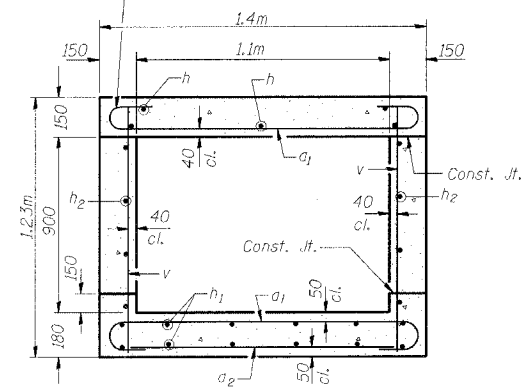
STATE OF ILLINOIS
DEPARTMENT OF TRANSPORTATION

MAP NO.	SECTION	COUNTY	TOTAL SHEETS	SHEET NO.
310	*	MADISON	452	146
STA. 31+136.677				
FED. ROAD DIST. NO. 6		ILLINOIS	FED. AID PROJECT-	

SECTION 60-14
SECTION 60-14-1B
CONTRACT NO. 76321



Tilt hook of a1 bars if necessary for 40 mm min. cl.



DESIGN STRESSES
f_y = 420 MPa
f'_c = 24 MPa

LOADING MS18 & ALT.

BILL OF MATERIAL

Bar	No.	Size	Length (m)	Shape
a1	831	#13	1.50	U
a2	134	#13	1.18	—
d	8	#13	1.36	L
h	40	#19	10.50	—
h1	64	#13	10.31	—
h2	64	#16	10.41	—
h3	10	#13	2.40	—
h4	4	#19	1.50	—
h5	8	#19	1.66	—
h6	14	#13	3.00	—
h7	12	#13	2.40	—
h8	12	#13	2.20	—
v	728	#13	1.15	—
v1	16	#13	2.12	—
Concrete Box Culverts			m ³	61.4
Reinforcement Bars			kg	5064

DESIGNED
CHECKED
DRAWN
CHECKED

SSB-H-L (M) 6-1-2000

PLAN
NOTES

A distance of half the length of the wingwall but not less than 2 m of the barrel shall be poured monolithically with the wingwalls.
Reinforcement Bars shall conform to the requirements of AASHTO M-31M, M-42M or M-53M, Grade 420.
Bars indicated thus 12 x 4-#16 etc. indicates 12 lines of bars with 4 lengths per line.
All dimensions are in millimeters (mm) except as noted.
All construction joints shall be bonded.

PLANS PREPARED BY:
WOOLPERT LLP
4315 NORTH ILLINOIS STREET, SUITE 1 C
BELLEVILLE, IL
62226-1045
618.277.7004
FAX: 618.277.6114

STATE OF ILLINOIS
DEPARTMENT OF TRANSPORTATION
FA 310
SECTION 60-14
MADISON COUNTY
STATION 31+136.677