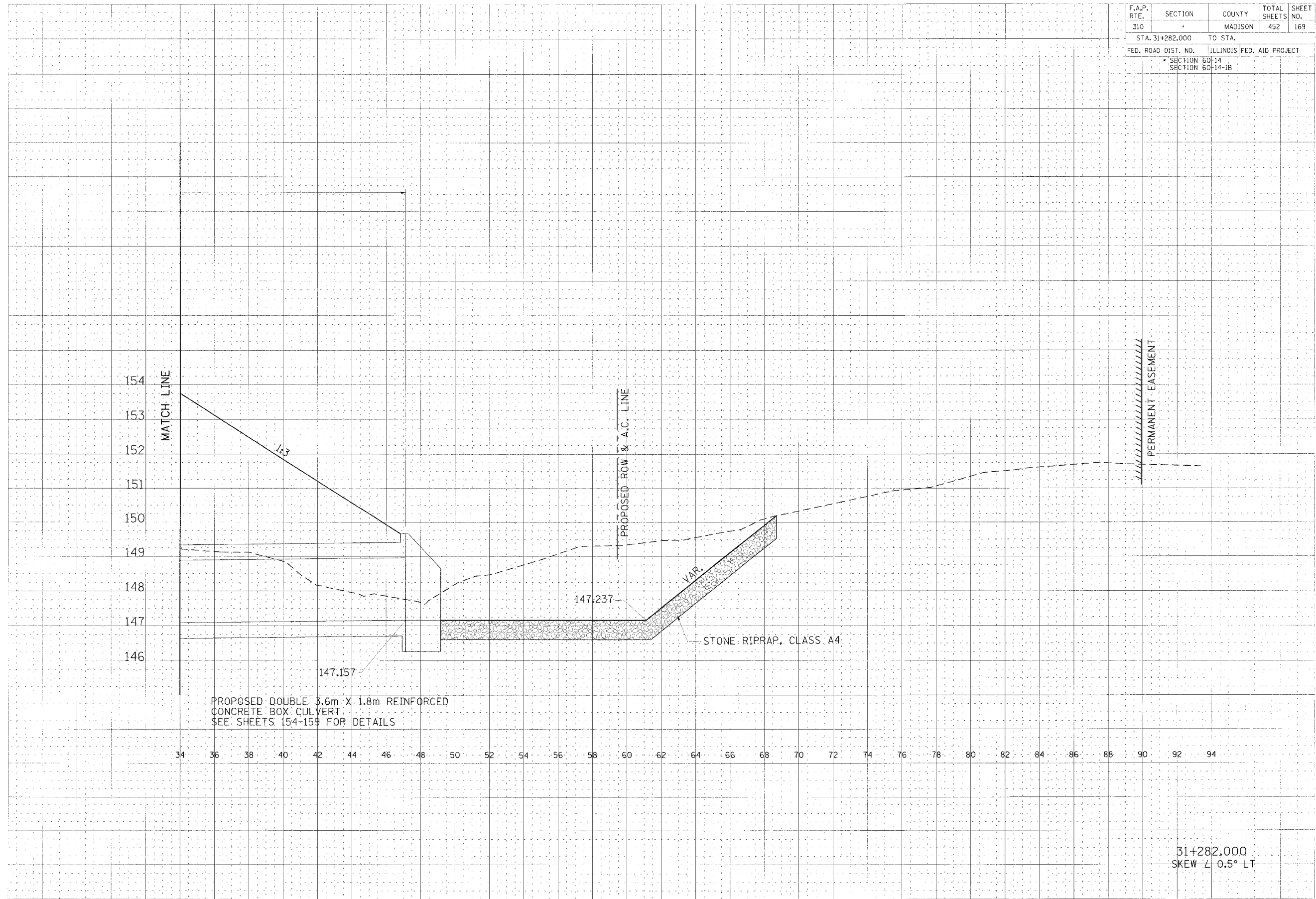


F.A.P. RTE.	SECTION	COUNTY	TOTAL SHEETS	SHEET NO.
310		MADISON	452	169
STA. 31+282.000		TO STA.		
FED. ROAD DIST. NO.		ILLINOIS FED. AID PROJECT		
		SECTION 60-14		
		SECTION 60-14-1B		

DATE	BY	REVISION

DATE	BY	REVISION



PROPOSED DOUBLE 3.6m X 1.8m REINFORCED  
CONCRETE BOX CULVERT  
SEE SHEETS 154-159 FOR DETAILS

31+282.000  
SKEW  $\angle$  0.5° LT

CULVERT PROFILE, FAP ROUTE 310, STA 31+282.000

1. The user of this drawing shall be responsible for obtaining all necessary permits and approvals.