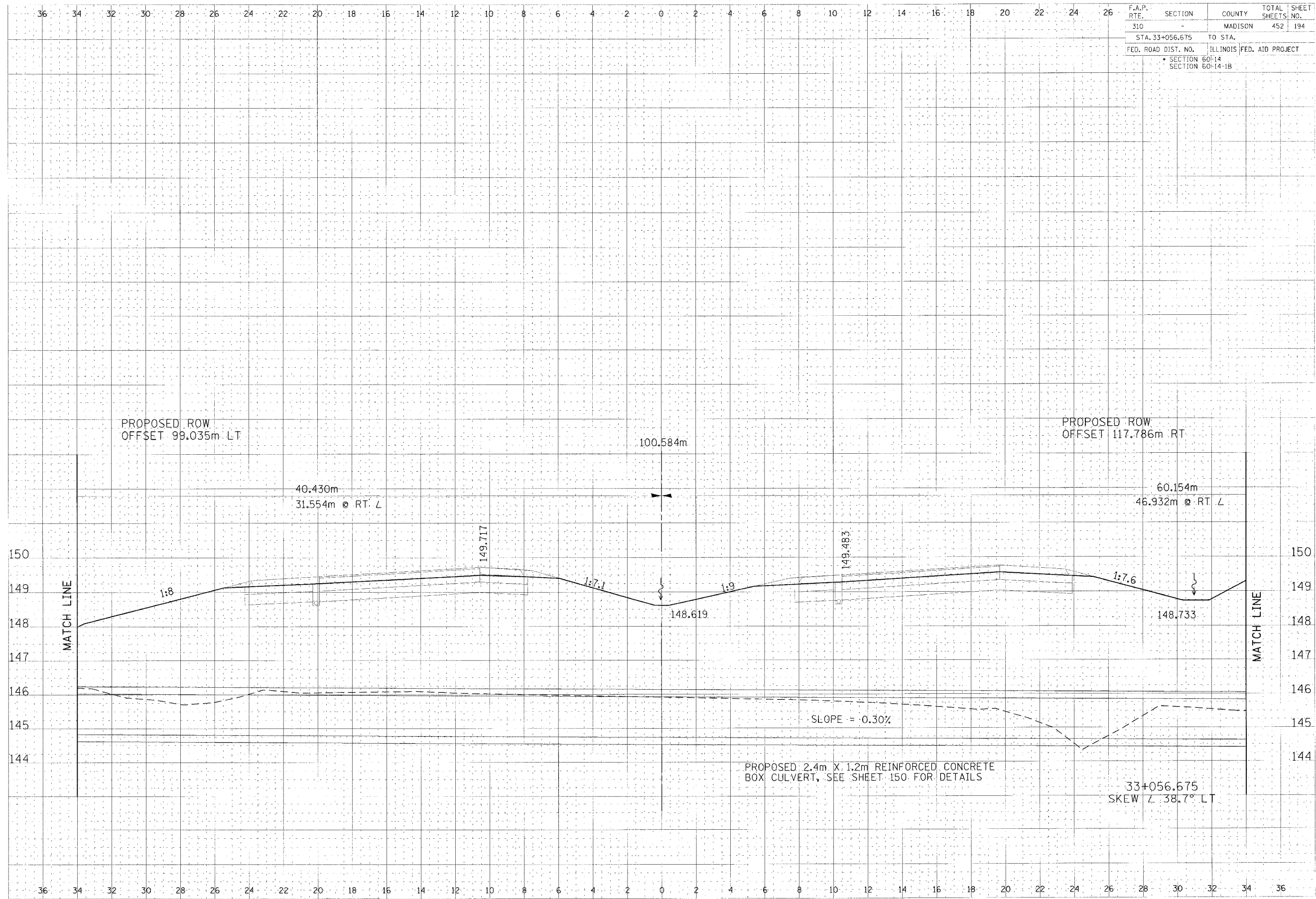


F.A.P. RTE.	SECTION	COUNTY	TOTAL SHEETS	SHEET NO.
310		MADISON	452	194
STA. 33+056.675		TO STA.		
FED. ROAD DIST. NO.	ILLINOIS FED. AID PROJECT			
	SECTION 60-14			
	SECTION 60-14-1B			

DATE	
DESIGNED BY	
CHECKED BY	
IN CHARGE	
DATE	
APPROVED BY	

DATE	
DESIGNED BY	
CHECKED BY	
IN CHARGE	
DATE	
APPROVED BY	



CULVERT PROFILE, FAP ROUTE 310, STA 33+056.675

DATE PLOTTED: 09/15/2010 09:25:55 AM