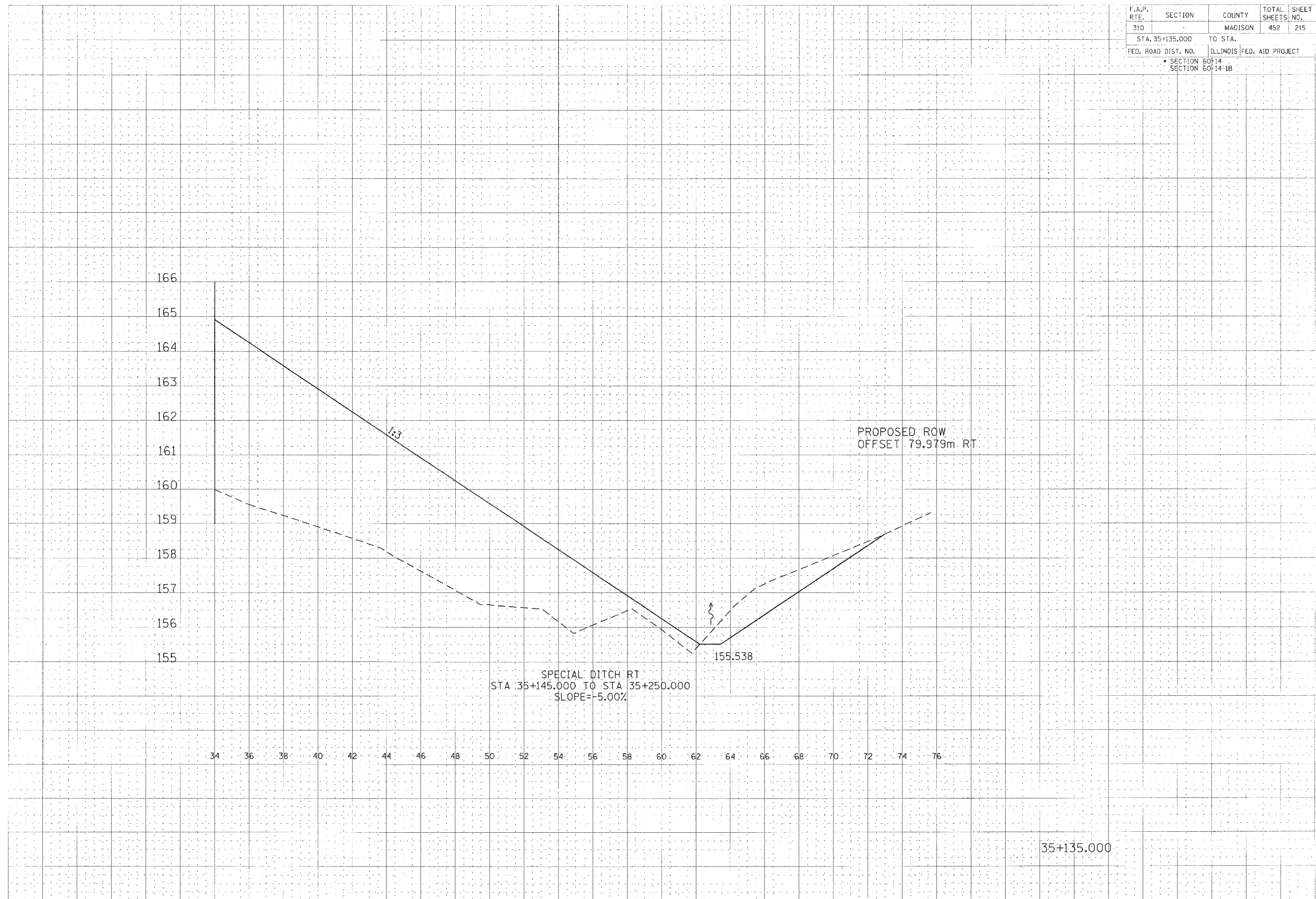


F.A.P. RTE.	SECTION	COUNTY	TOTAL SHEETS	SHEET NO.
310		MADISON	452	215
STA. 35+135.000		TO STA.		
FED. ROAD DIST. NO.	ILLINOIS FED. AID PROJECT			
	SECTION 60-14			
	SECTION 60-14-1B			

DATE	
BY	
CHECKED	
DESIGNED	
DRAWN	
IN CHARGE	

DATE	
BY	
CHECKED	
DESIGNED	
DRAWN	
IN CHARGE	



35+135.000

CULVERT PROFILE, FAP ROUTE 310, STA 35+135.000