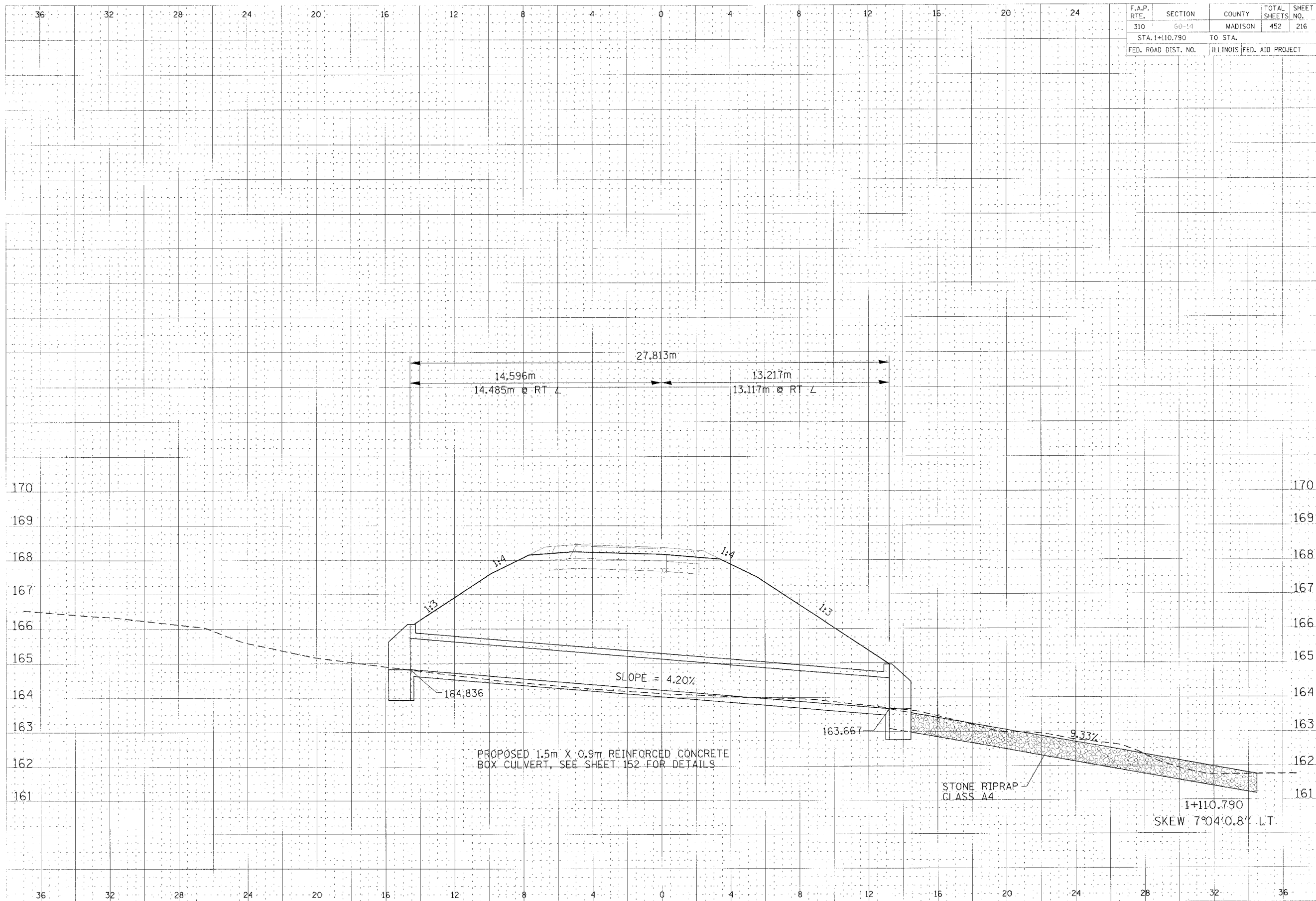


F.A.P. RTE.	SECTION	COUNTY	TOTAL SHEETS	SHEET NO.
310	60-14	MADISON	452	216
STA. 1+110.790		TO STA.		
FED. ROAD DIST. NO.		ILLINOIS FED. AID PROJECT		

PROJECT NO. 11-110-790  
 SHEET NO. 216  
 DATE 11/11/11  
 DRAWN BY [Name]  
 CHECKED BY [Name]

PROJECT NO. 11-110-790  
 SHEET NO. 216  
 DATE 11/11/11  
 DRAWN BY [Name]  
 CHECKED BY [Name]



CULVERT PROFILE, RAMP 1, FAP ROUTE 310, STA 1+110.790