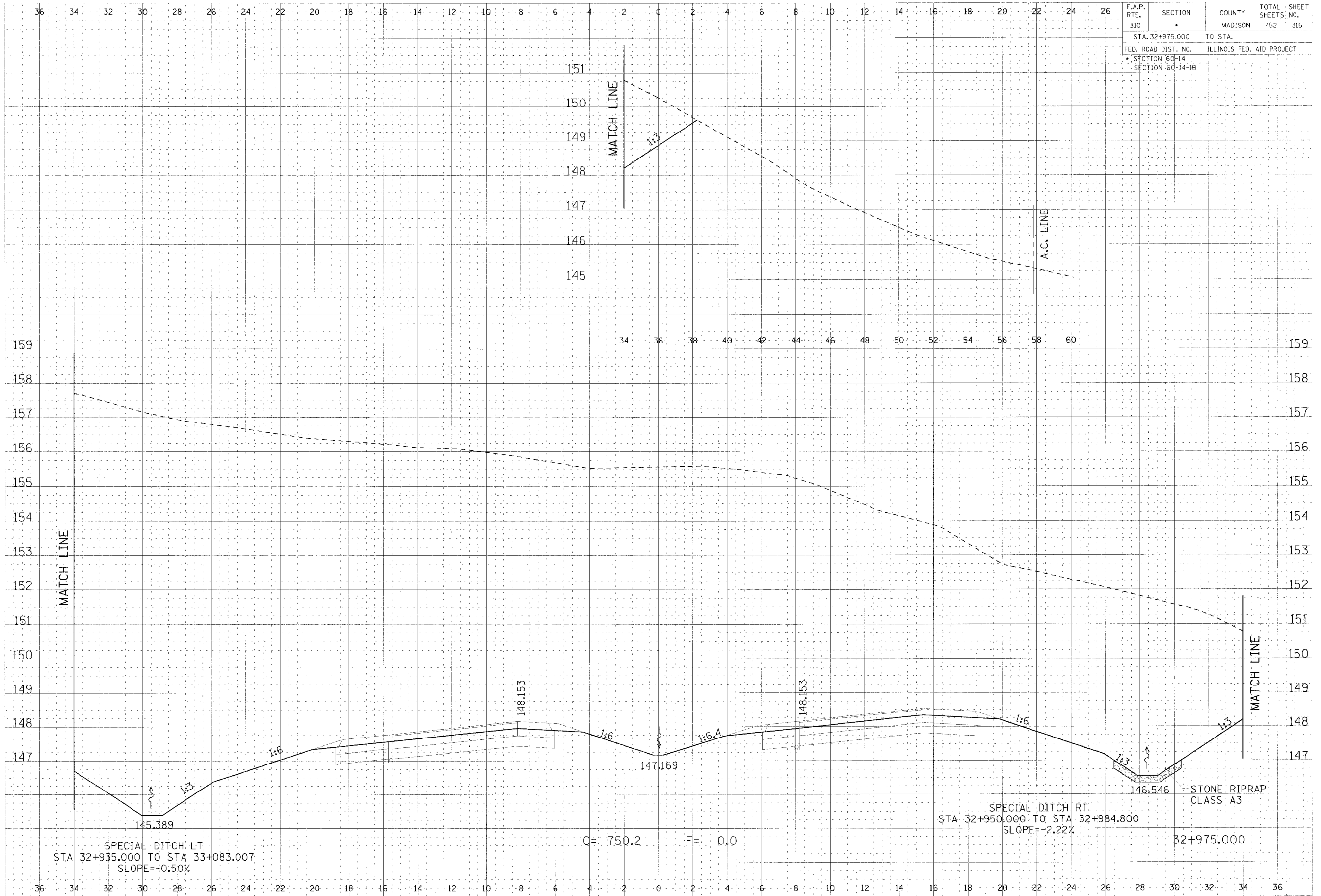


FINAL  
 SURVEY  
 NOTE BOOK  
 NO.

DATE  
 BY  
 CHECKED  
 APPROVED

F.A.P. RTE.	SECTION	COUNTY	TOTAL SHEETS NO.
310	*	MADISON	452 315
STA. 32+975.000		TO STA.	
FED. ROAD DIST. NO.		ILLINOIS FED. AID PROJECT	
SECTION 60-14			
SECTION 60-14-1B			



SPECIAL DITCH LT.  
 STA 32+935.000 TO STA 33+083.007  
 SLOPE=-0.50%

C= 750.2 F= 0.0

SPECIAL DITCH RT.  
 STA 32+950.000 TO STA 32+984.800  
 SLOPE=-2.22%

STONE RIPRAP  
 CLASS A3

32+975.000

CROSS SECTION, FAP ROUTE 310, STA 32+975.000

DATE: 11/10/2006 11:35:28 AM