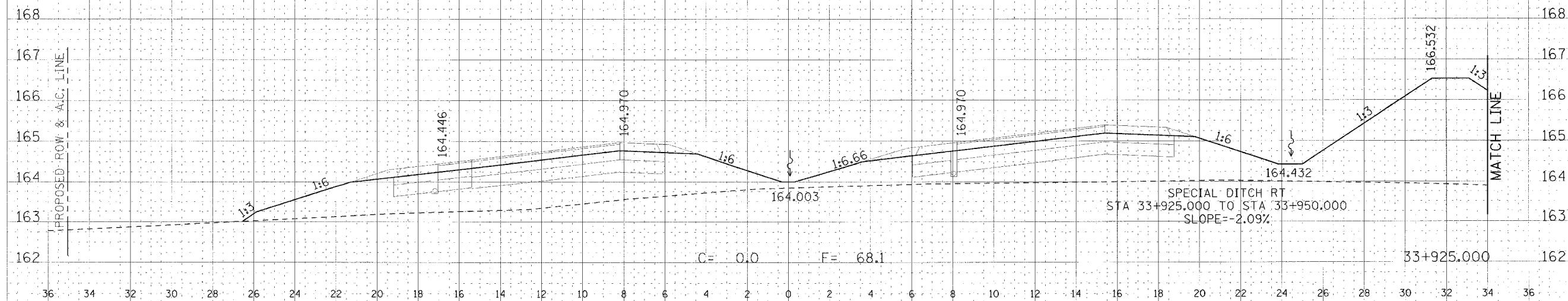
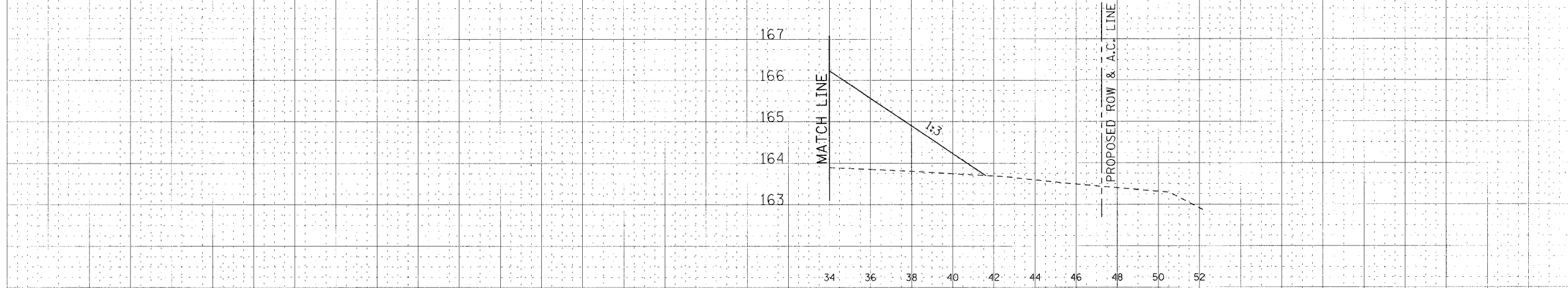
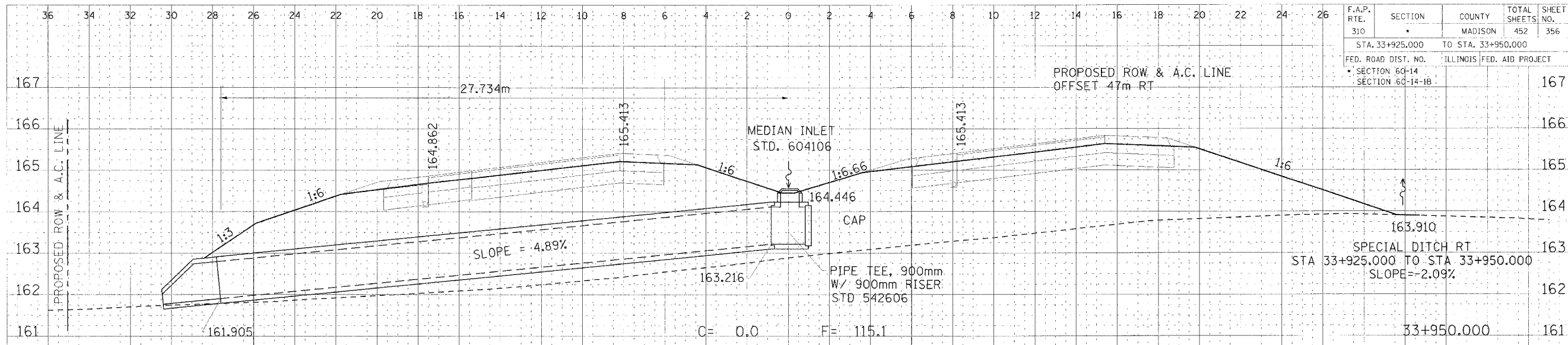


F.A.P. RTE.	SECTION	COUNTY	TOTAL SHEETS	SHEET NO.
310		MADISON	452	356
STA. 33+925.000		TO STA. 33+950.000		
FED. ROAD DIST. NO.		ILLINOIS	FED. AID PROJECT	
SECTION 60-14		SECTION 60-14-1B		



CROSS SECTION, FAP ROUTE 310, STA 33+925.000 TO STA 33+950.000

FINAL
DATE
BY
CHECKED
DATE
BY
DESIGNED
DATE
BY
DRAWN
DATE
BY

UNUSUAL
SOURCE
DATE
BY
CHECKED
DATE
BY
DESIGNED
DATE
BY
DRAWN
DATE
BY

DATE PLOTTED: 08/27/2008 10:28:18 AM