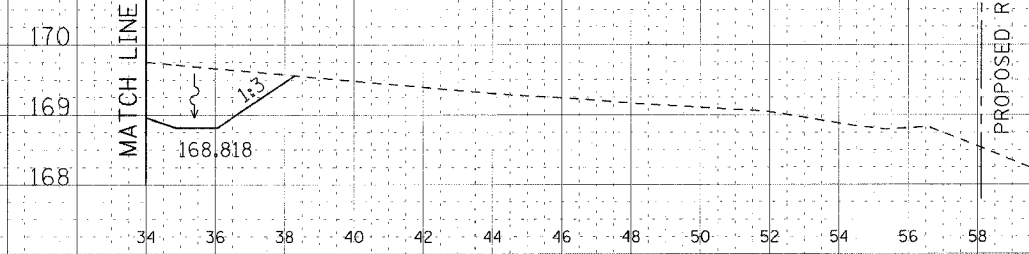
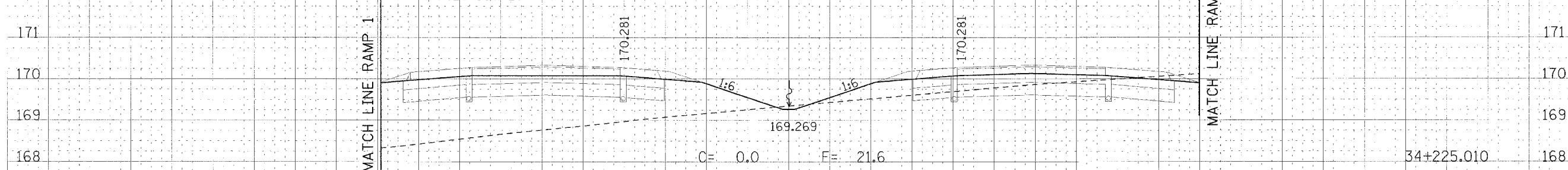


F.A.P. RTE.	SECTION	COUNTY	TOTAL SHEETS	SHEET NO.
310		MADISON	452	363
STA. 34+225.010		TO STA.		
FED. ROAD DIST. NO.		ILLINOIS FED. AID PROJECT		
SECTION 60-14		SECTION 60-14-B		

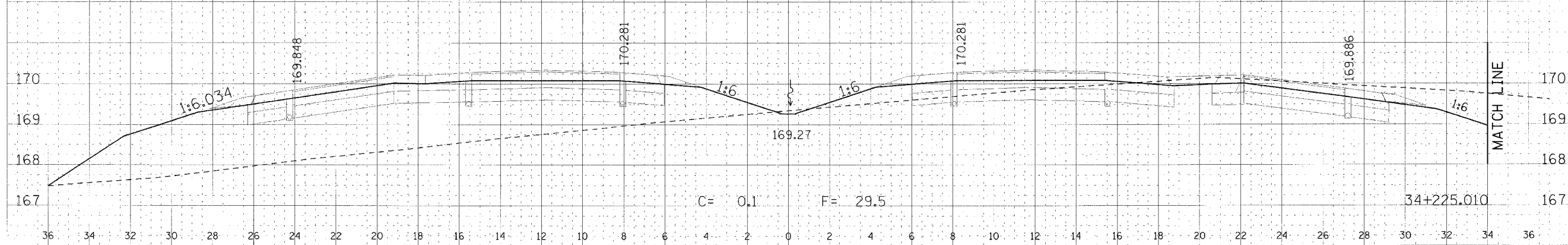
FAP RTE 310 STA 34+225.010/-19.181m LT=
RAMP 1 STA 1+380.663/-4.900m LT

PROPOSED ROW & A.C. LINE
OFFSET 39m LT

FAP RTE 310 STA 34+225.010/19.379m RT=
RAMP 2 STA 1+246.414/-7.679m LT



PROPOSED ROW & A.C. LINE
OFFSET 38m LT



CROSS SECTION, FAP ROUTE 310, STA 33+225.010

DATE	
DESIGNED	
CHECKED	
IN CHARGE	
APPROVED	
DATE	

DATE	
DESIGNED	
CHECKED	
IN CHARGE	
APPROVED	
DATE	