

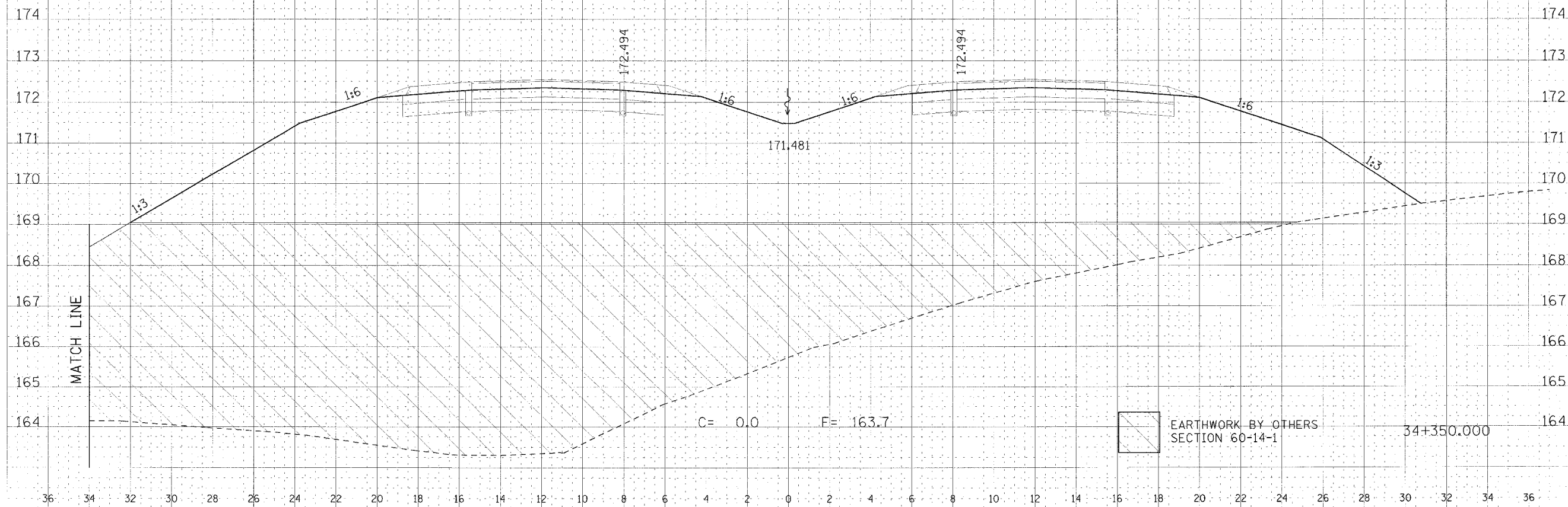
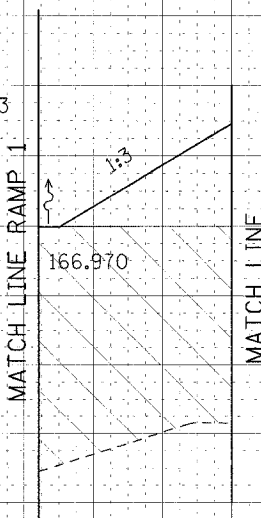
36 34 32 30 28 26 24 22 20 18 16 14 12 10 8 6 4 2 0 2 4 6 8 10 12 14 16 18 20 22 24 26

F.A.P. RTE.	SECTION	COUNTY	TOTAL SHEETS	SHEET NO.
310		MADISON	452	367
STA. 34+350.000		TO STA.		
FED. ROAD DIST. NO.		ILLINOIS FED. AID PROJECT		
SECTION 60-14				
SECTION 60-14-1B				

FAP RTE 310 STA 34+350.000/-39.574m LT=  
RAMP 1 STA 1+256.439/-19.457m LT

SPECIAL DITCH LT  
STA 34+351.856 TO STA 34+408.463  
SLOPE=-5.26%

SPECIAL DITCH LT  
STA 34+275.000 TO STA 34+351.856  
SLOPE=-4.22%



PROJECT: FAP RTE 310  
SECTION: SECTION 60-14-1B  
DATE: 11/11/11  
DRAWN BY: [Name]  
CHECKED BY: [Name]

PROJECT: FAP RTE 310  
SECTION: SECTION 60-14-1B  
DATE: 11/11/11  
DRAWN BY: [Name]  
CHECKED BY: [Name]

CROSS SECTION, FAP ROUTE 310, STA 34+350.000

EARTHWORK BY OTHERS  
SECTION 60-14-1

C= 0.0 F= 163.7