

76393

FAP ROUTE	SECTION	COUNTY	TOTAL SHEETS	SHEET NO.
805	147BR	ST. CLAIR	52	1
FED. ROAD DIST. NO.		ILLINOIS	FED. AID PROJECT	18-77

INDEX OF SHEETS

- 1 COVER SHEET
 - 2 GENERAL NOTES
 - 3 SUMMARY OF QUANTITIES
 - 4-5 TYPICAL SECTIONS
 - 6-8 SCHEDULES OF QUANTITIES
 - 9-12 PLAN AND PROFILE SHEETS
 - 13 PAVEMENT MARKING PLAN
 - 14 EROSION CONTROL PLAN
 - 15-19 WIDE LOAD SIGNING/STAGING PLAN
 - 20 ELECTRICAL PLAN SHEET
 - 21-44 BRIDGE PLANS
 - 45-52 CROSS SECTIONS
- 52A-52B For Info Only

STANDARDS

280001-02	701416-05
420401-05	701426-02
606001-02	701701-04
606301-02	702001-06
630001-06	704001-02
630301-03	780001-01
631031-05	781001-02
635006-02	886001
635011-01	886006
701400-02	601101
701401-03	

STATE OF ILLINOIS

DEPARTMENT OF TRANSPORTATION

DIVISION OF HIGHWAYS

PROPOSED HIGHWAY PLANS

SCALES
 PLAN = 1"=30'
 PROFILE HORIZ. = 1"=30'
 PROFILE VERT. = 1"=5'
 CROSS SECTIONS = 1"=10' HORIZ.
 1"=5' VERT.

FAP ROUTE 805 (IL RTE 161)

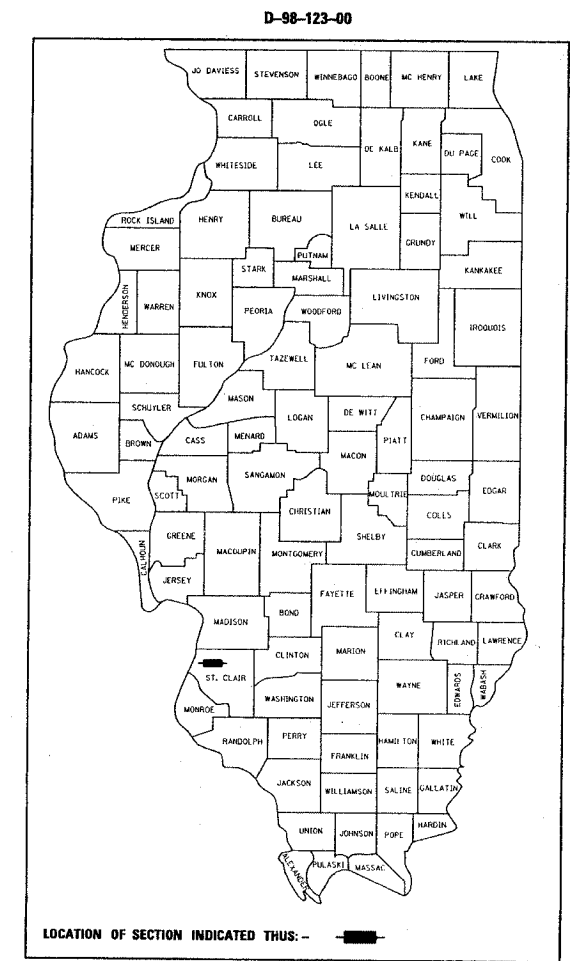
SECTION 147BR

PROJECT NO. BRF-0905(068)

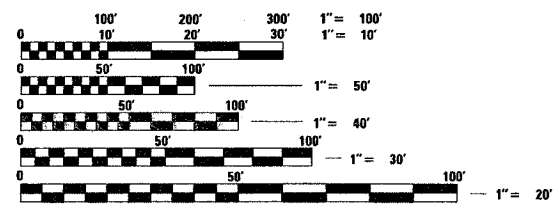
ST. CLAIR COUNTY

STRUCTURE REPLACEMENT

C-98-098-05



MICROFILMED _____
 REEL NUMBER _____
 AWARDED _____
 RESIDENT ENGINEER _____
 AS BUILT CHANGES WERE MADE
 ON THE FOLLOWING SHEETS

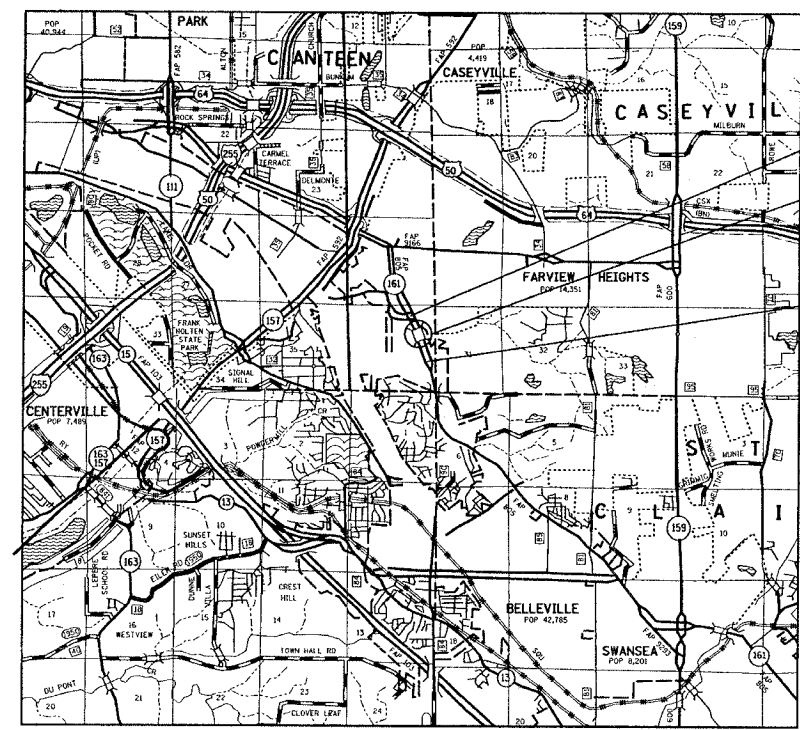


FULL SIZE PLANS HAVE BEEN PREPARED USING STANDARD ENGINEERING SCALES, REDUCED SIZED PLANS WILL NOT CONFORM TO STANDARD SCALES, IN MAKING MEASUREMENTS ON REDUCED PLANS, THE ABOVE SCALES MAY BE USED.

J.U.L.I.E.
 JOINT UTILITY LOCATION INFORMATION FOR EXCAVATION
 1-800-892-0123

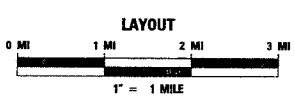
CONTRACT NO. 76393

LENGTH OF PROJECT
 GROSS LENGTH: 1630.05 FT = .31 MILES
 NET LENGTH: 1630.05 FT = .31 MILES



PROJECT BEGIN (APPROX.)
 LATITUDE: 38° 02' 26" N
 LONGITUDE: 90° 02' 18" W

PROJECT END (APPROX.)
 LATITUDE: 38° 02' 18" N
 LONGITUDE: 90° 02' 18" W



2003 ADT = 16,200
 2023 ADT = 21,800

PROJECT BEGIN
 STA. 95 + 77.38

BRIDGE OVER A TRIBUTARY TO SCHOENBERGER CREEK
 STA. 100 + 46.58 TO STA. 101 + 73.75
 S.N. 082-0102 (N.B.)
 S.N. 082-0103 (S.B.)

PROJECT END
 STA. 112 + 07.43

STATE OF ILLINOIS
 DEPARTMENT OF TRANSPORTATION
 DIVISION OF HIGHWAYS

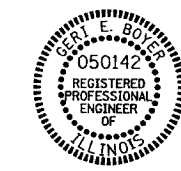
SUBMITTED March 22, 2006

PASSED May 12, 2006

APPROVED May 12, 2006

DEPUTY DIRECTOR OF HIGHWAYS, REGION 5 ENGINEER
 ENGINEER OF DESIGN AND ENVIRONMENT
 DIRECTOR, DIVISION OF HIGHWAYS

**PRINTED BY THE AUTHORITY
 OF THE STATE OF ILLINOIS**



Gert E. Boyer 03/9/2006
 GERT E. BOYER, P.E.
 LICENSE NO. 062-050142 DATE
 EXPIRES 11-30-2007

PREPARED BY
TWM THOUVENOT, WADE & MOERCHEN, INC.

PROJECT ENGINEER: PATTI LE BEAU (618) 346-3179
 SQUAD CONTACT: ARTHUR MUEHLFELD (618) 346-3209