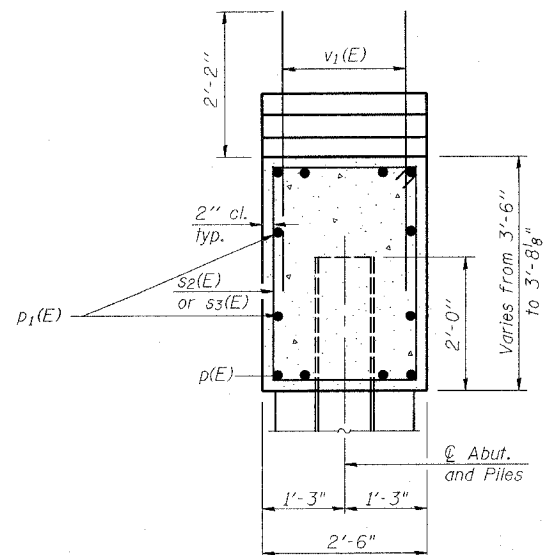
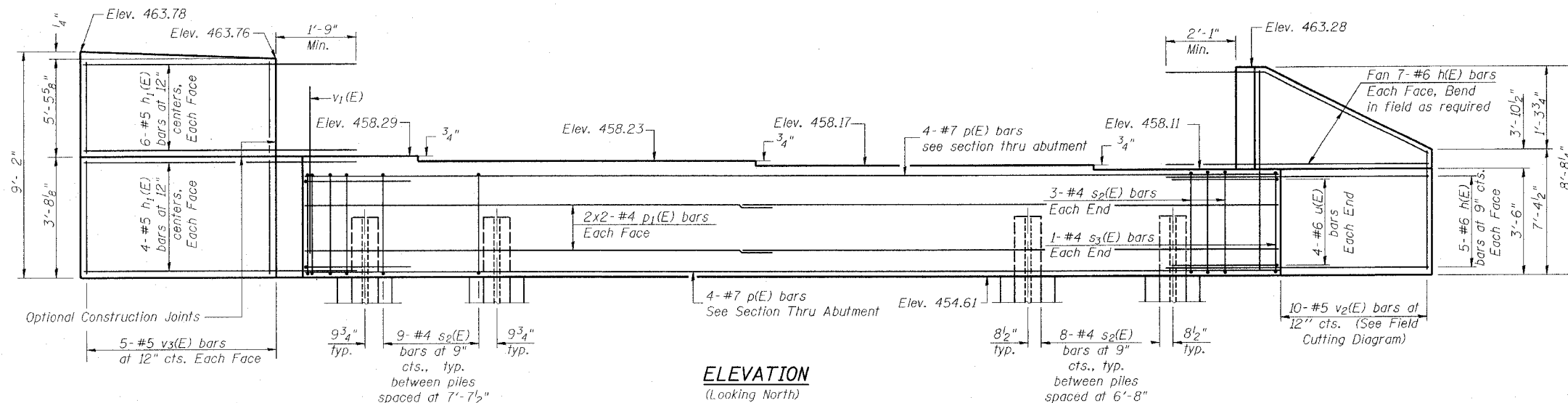


STATE OF ILLINOIS
DEPARTMENT OF TRANSPORTATION

F.A.P. ROUTE	SECTION	COUNTY	SHEET NO.	SHEET NO.
FAP 805	147BR	ST. CLAIR	52	33
FED. ROAD DIST. NO. 1		ILLINOIS	FED. AID PROJECT	

SHEET NO. 13
24 SHEETS

Contract No. 76393



SEC. THRU ABUT.

BILL OF MATERIAL

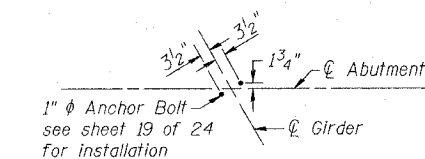
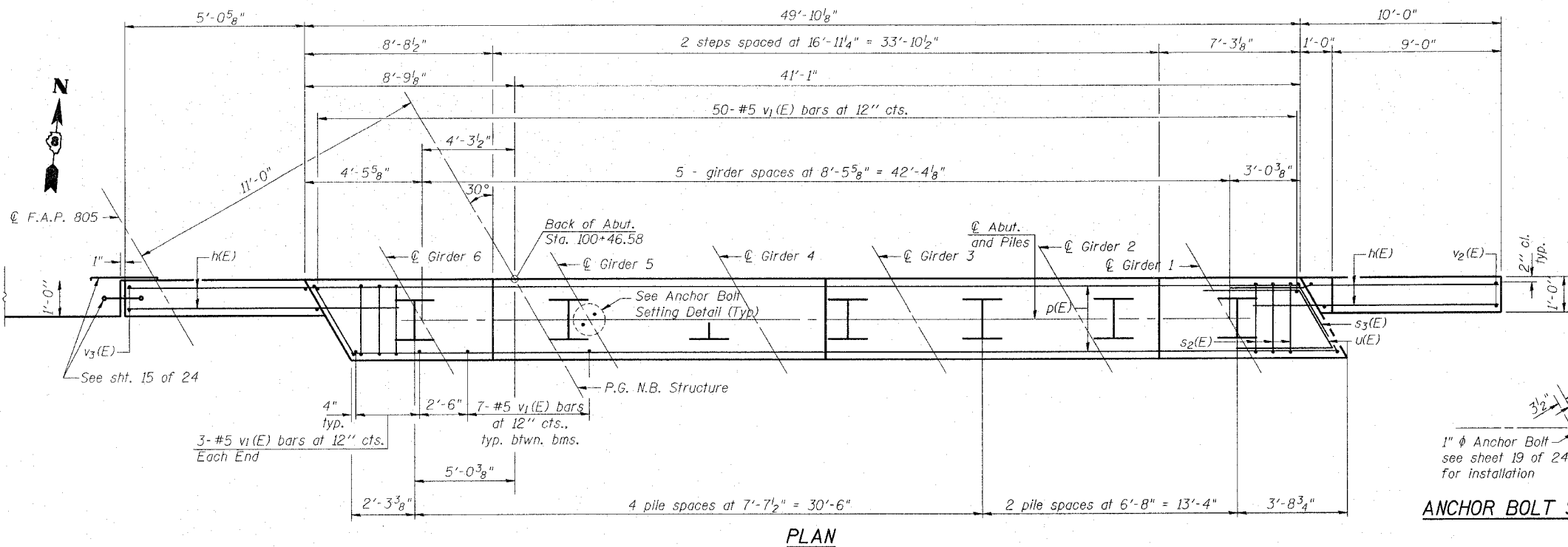
Bar	No.	Size	Length	Shape
h(E)	24	#6	12'-0"	—
h1(E)	20	#5	6'-8"	—
p(E)	8	#7	49'-6"	—
p1(E)	8	#4	25'-8"	—
s2(E)	58	#4	11'-5"	□
s3(E)	2	#4	12'-1"	□
u(E)	8	#6	9'-6"	∩
v1(E)	91	#5	4'-4"	—
v2(E)	10	#5	15'-4"	—
v3(E)	10	#5	8'-8"	—
Concrete Structures	Cu. Yd.	21.2		
Reinforcement Bars, Epoxy Coated	Pound	2750		
Structure Excavation	Cu. Yd.	175		
Steel Piles HP 14x73	Ln. Ft.	522		
Test Pile HP 14x73	Each	1		

MIN. BAR LAP

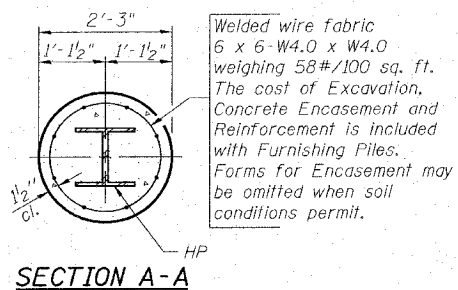
#4 Bars 1'-10"

PILE DATA

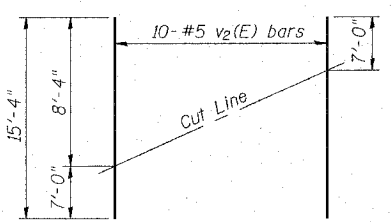
Type: HP 14x73
Capacity: Drive to Refusal
Est. Length: 87'
No. Required: 6+1 Test Pile



ANCHOR BOLT SETTING DETAIL

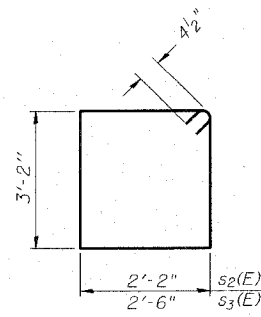


TYPICAL HP PILE ENCASEMENT DETAIL

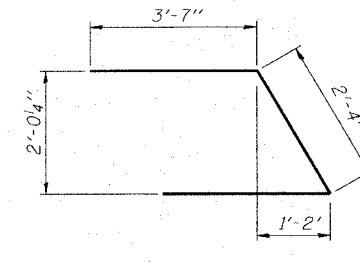


FIELD CUTTING DIAGRAM

Order v2(E) Full length. Cut as shown and use half of bars in each face.



BARS s2(E) & s3(E)



BAR u(E)

Notes:

- Pour steps monolithically with cap.
- Reinforcement bars designated (E) shall be epoxy coated.
- Space reinforcement in cap to miss anchor bolts.
- Bars designated thus 2x2-#4 etc. indicates 2 lines of bars with 2 lengths per line

ILLINOIS ROUTE 161 OVER
TRIBUTARY TO SCHOENBERGER CREEK
F.A.P. ROUTE 805 - SECTION 147BR
ST. CLAIR COUNTY
STATION 101+03.82
STRUCTURE NO. 082-0102 (N.B.)
STRUCTURE NO. 082-0103 (S.B.)

NB STRUCTURE, NORTH ABUTMENT

THOUVENOT, WADE & MOERCHEN, INC.



DESIGNED -	ALN, BWP
CHECKED -	ALN, BWP
DRAWN -	JMI, DEH
CHECKED -	ALN, BWP

AI-L 9-01-03

FILE LOCATION: #FILES#
DATE: #DATE#
TIME: #TIME#
PLOTTED BY: #USER#