

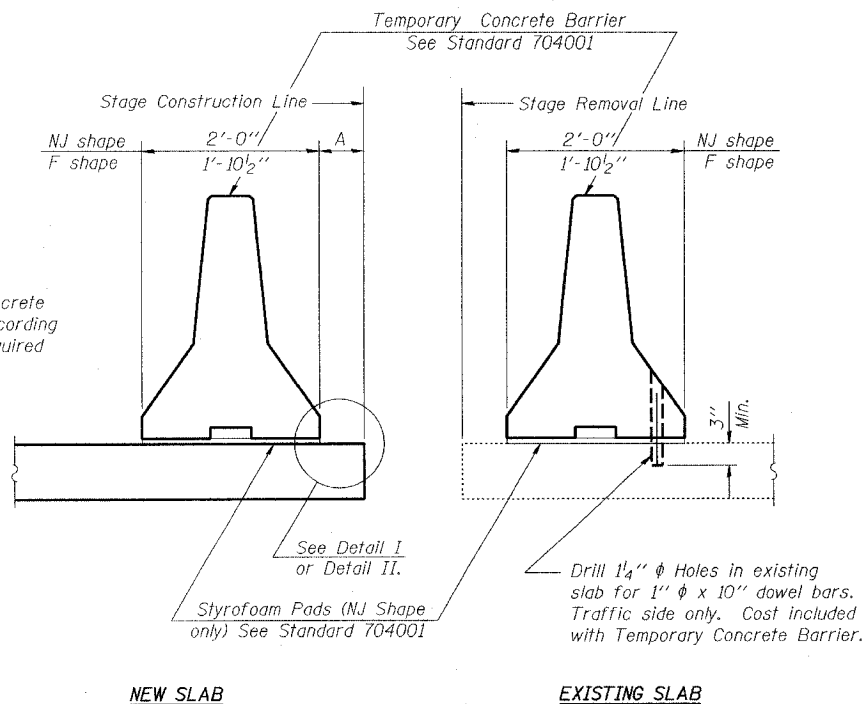
STATE OF ILLINOIS
DEPARTMENT OF TRANSPORTATION

F.A.P. ROUTE	SECTION	COUNTY	STATION	SHEET
FAP 805	M7BR	ST. CLAIR	52	37
FED. ROAD DIST. NO. 1	ILLINOIS	FED. AID PROJECT-		

SHEET NO. 17

24 SHEETS

Contract No. 76393

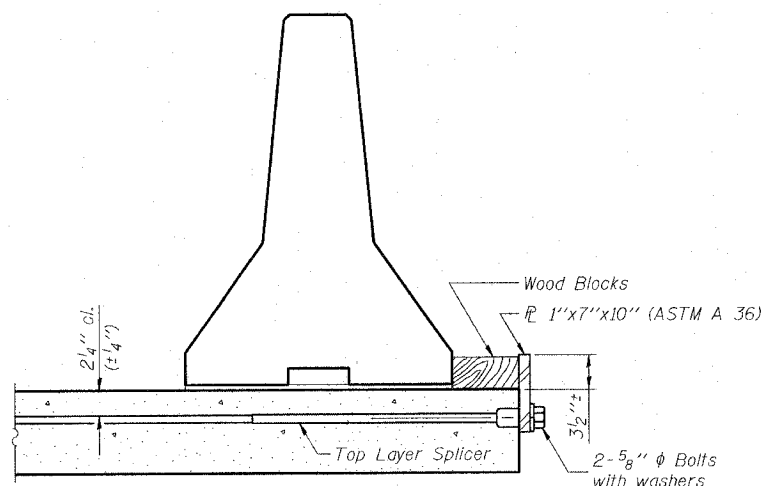


When "A" is 3'-6" or less, the temporary concrete barrier shall be anchored to the new slab according to Detail I or Detail II. No anchorage is required when "A" is greater than 3'-6".

NOTES

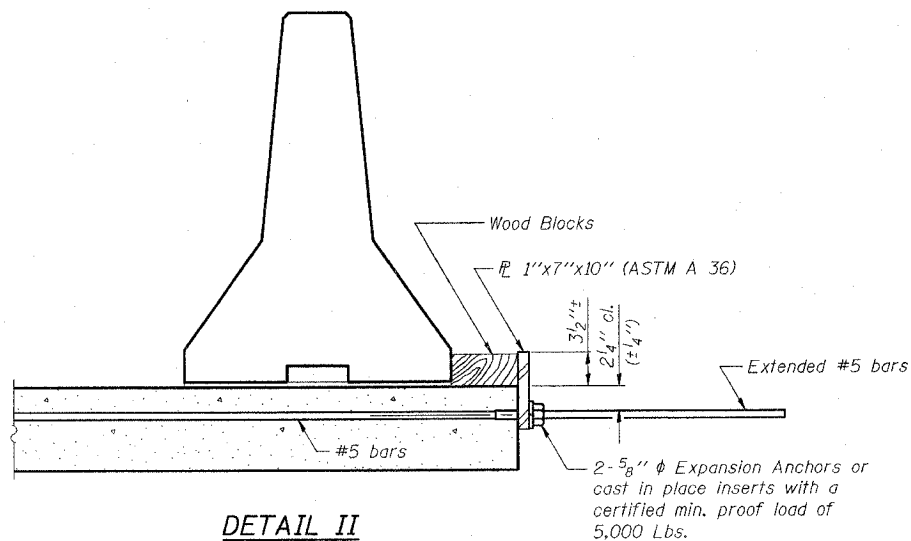
- Detail I - With Bar Splicer or Couplers:
Connect one (1) 1"x7"x10" steel \bar{L} to the top layer of couplers with 2-5/8" ϕ bolts screwed to coupler at approximate \bar{C} of each barrier panel.
- Detail II - With Extended Reinforcement Bars:
Connect one (1) 1"x7"x10" steel \bar{L} to the concrete slab with 2-5/8" ϕ Expansion Anchors or cast in place inserts spaced between the top layer of reinforcement at approximate \bar{C} of each barrier panel.
- Cost of anchorage is included with Temporary Concrete Barrier.

SECTIONS THRU SLAB



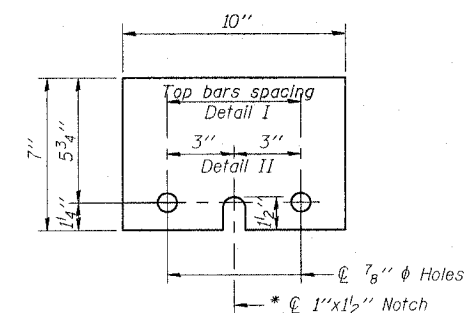
DETAIL I

The 1"x7"x10" Plate shall not be removed until Stage II Construction forms and reinforcement bars are in place.



DETAIL II

The 1"x7"x10" Plate shall not be removed until Stage II Construction forms and all reinforcement bars are in place and the concrete is ready to be placed.



1" x 7" x 10"

* Required only with Detail II

**TEMPORARY CONCRETE BARRIER
FOR STAGE CONSTRUCTION**

THOUVENOT, WADE & MOERCHEN, INC.



DESIGNED	-	ALN
CHECKED	-	BWP
DRAWN	-	JMI, DEH
CHECKED	-	ALN

R-27 9-01-03

ILLINOIS ROUTE 161 OVER
TRIBUTARY TO SCHOENBERGER CREEK
F.A.P. ROUTE 805 - SECTION 147BR
ST. CLAIR COUNTY
STATION 101+03.82
STRUCTURE NO. 082-0102 (N.B.)
STRUCTURE NO. 082-0103 (S.B.)

TEMPORARY CONCRETE BARRIER

DATE: \$DATE\$ TIME: \$TIME\$ PLOTTED BY: \$USER\$ FILE LOCATION: \$FILE\$