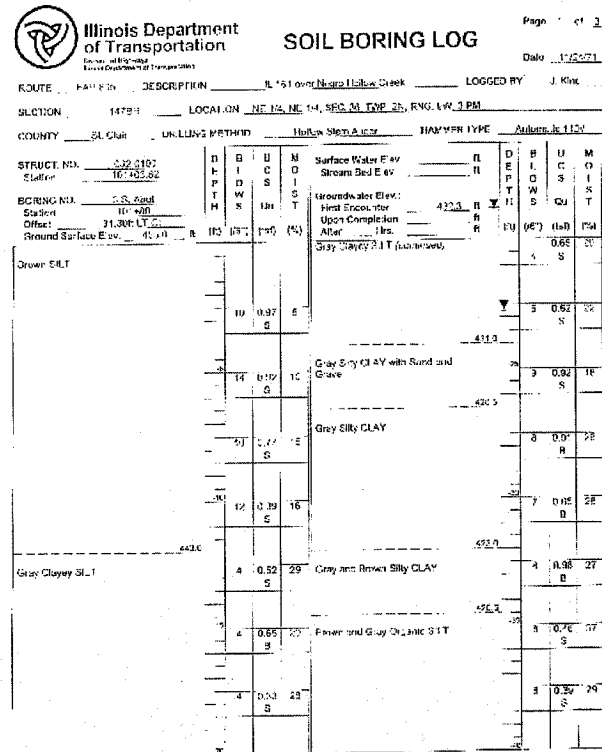
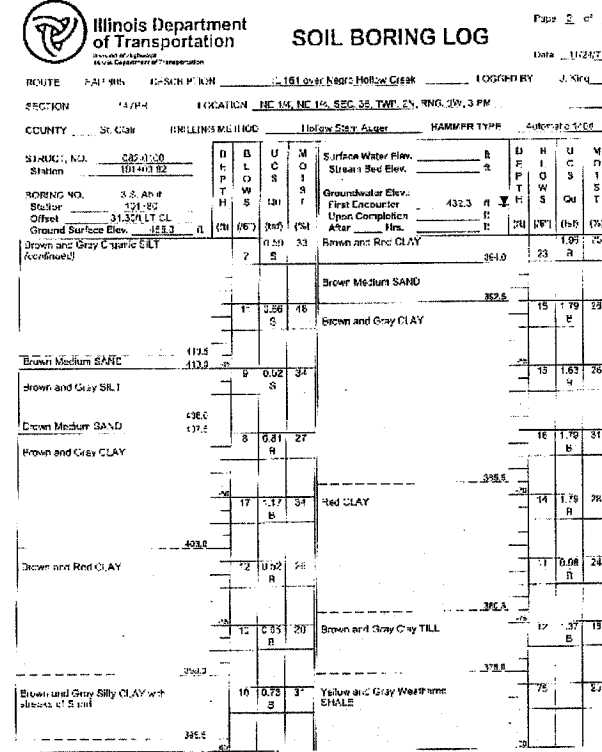


STATE OF ILLINOIS  
DEPARTMENT OF TRANSPORTATION

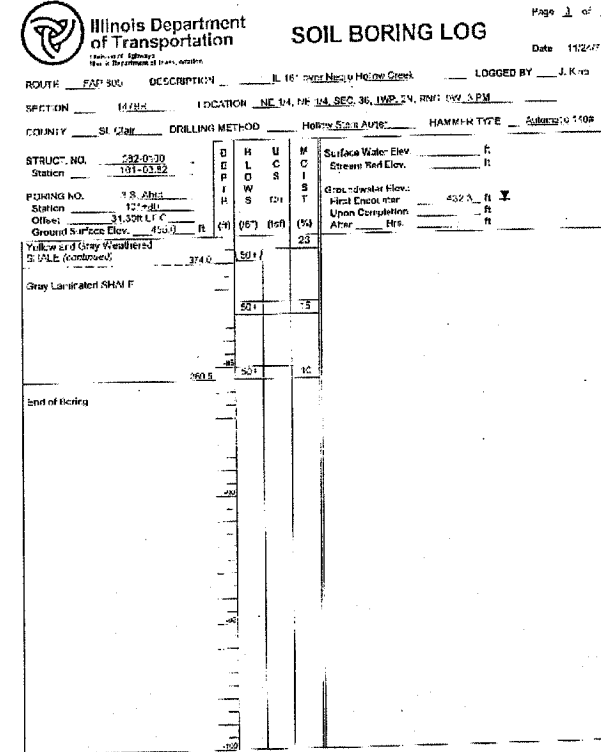
|                       |         |           |                  |       |                           |
|-----------------------|---------|-----------|------------------|-------|---------------------------|
| F.A.P. ROUTE          | SECTION | COUNTY    | DATE             | SHEET | SHEET NO. 21<br>24 SHEETS |
| FAP 805               | 147BR   | ST. CLAIR | 52               | 41    |                           |
| FED. ROAD DIST. NO. 1 |         | ILLINOIS  | FED. AID PROJECT |       | Contract No. 76393        |



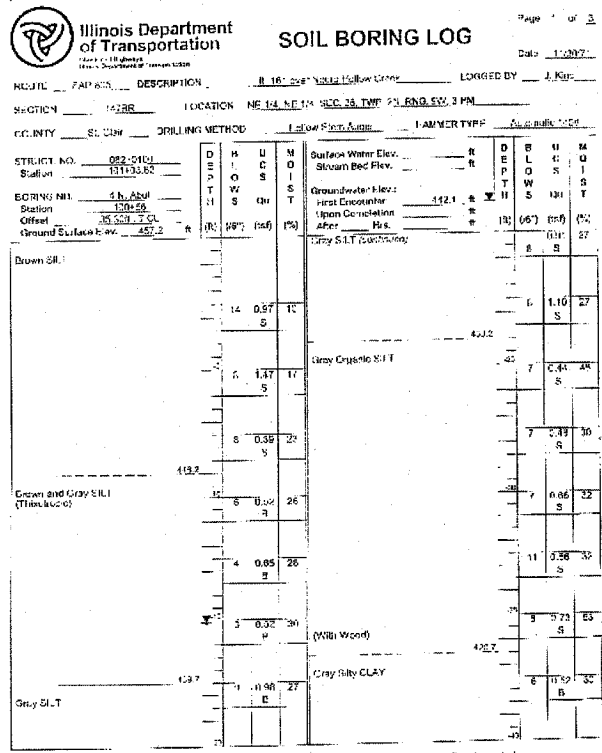
The Unconfined Compressive Strength (UCS) Failure Mode is indicated by (B-Bulge, S-Shear, P-Penetrometer). The SPT (N value) is the sum of the last two blow values in each sampling zone (AASHTO T228). DBS, from 137 (Rev. 5-79)



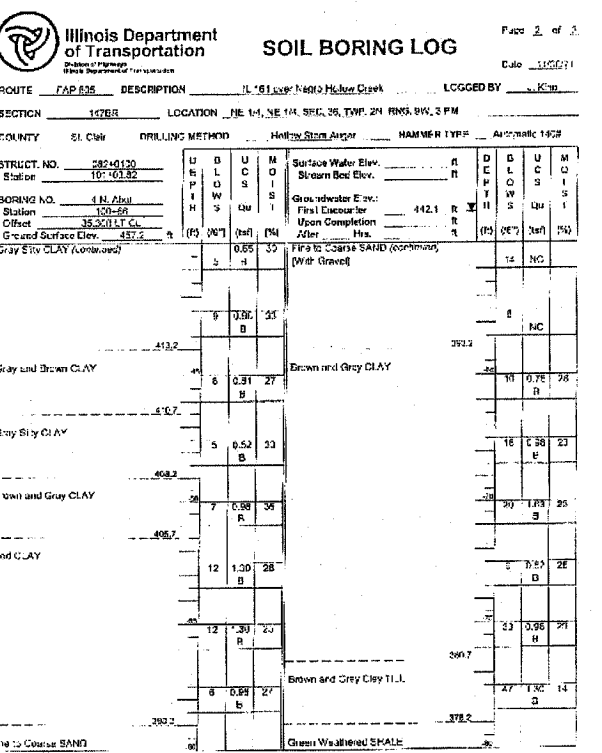
The Unconfined Compressive Strength (UCS) Failure Mode is indicated by (B-Bulge, S-Shear, P-Penetrometer). The SPT (N value) is the sum of the last two blow values in each sampling zone (AASHTO T228). DBS, from 31 (Rev. 8-86)



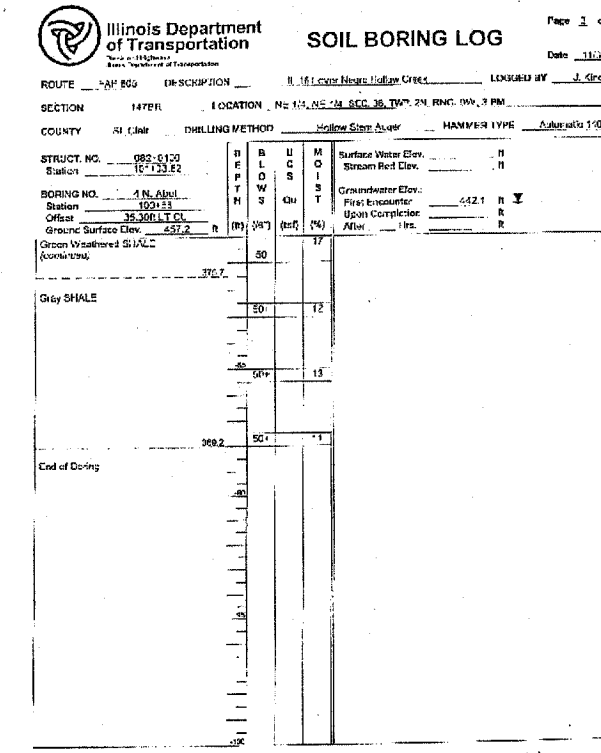
The Unconfined Compressive Strength (UCS) Failure Mode is indicated by (B-Bulge, S-Shear, P-Penetrometer). The SPT (N value) is the sum of the last two blow values in each sampling zone (AASHTO T228). DBS, from 137 (Rev. 8-89)



The Unconfined Compressive Strength (UCS) Failure Mode is indicated by (B-Bulge, S-Shear, P-Penetrometer). The SPT (N value) is the sum of the last two blow values in each sampling zone (AASHTO T228). DBS, from 137 (Rev. 8-79)



The Unconfined Compressive Strength (UCS) Failure Mode is indicated by (B-Bulge, S-Shear, P-Penetrometer). The SPT (N value) is the sum of the last two blow values in each sampling zone (AASHTO T228). DBS, from 137 (Rev. 8-79)



The Unconfined Compressive Strength (UCS) Failure Mode is indicated by (B-Bulge, S-Shear, P-Penetrometer). The SPT (N value) is the sum of the last two blow values in each sampling zone (AASHTO T228). DBS, from 137 (Rev. 8-79)

|          |     |
|----------|-----|
| DESIGNED | ALN |
| CHECKED  | BWP |
| DRAWN    | DEH |
| CHECKED  | ALN |

ILLINOIS ROUTE 161 OVER  
TRIBUTARY TO SCHOENBERGER CREEK  
F.A.P. ROUTE 805 - SECTION 147BR  
ST. CLAIR COUNTY  
STATION 101+03.82  
STRUCTURE NO. 082-0102 (N.B.)  
STRUCTURE NO. 082-0103 (S.B.)

BORING LOGS

FILE LOCATION: #FILES#  
DATE: #DATE#  
TIME: #TIME#  
PLOTTED BY: #USER#