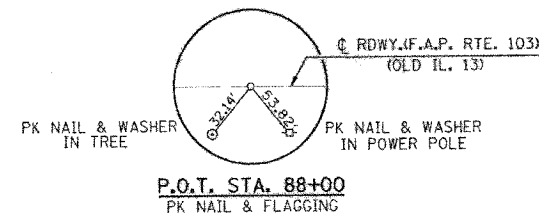
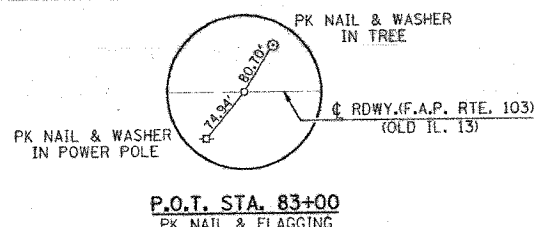


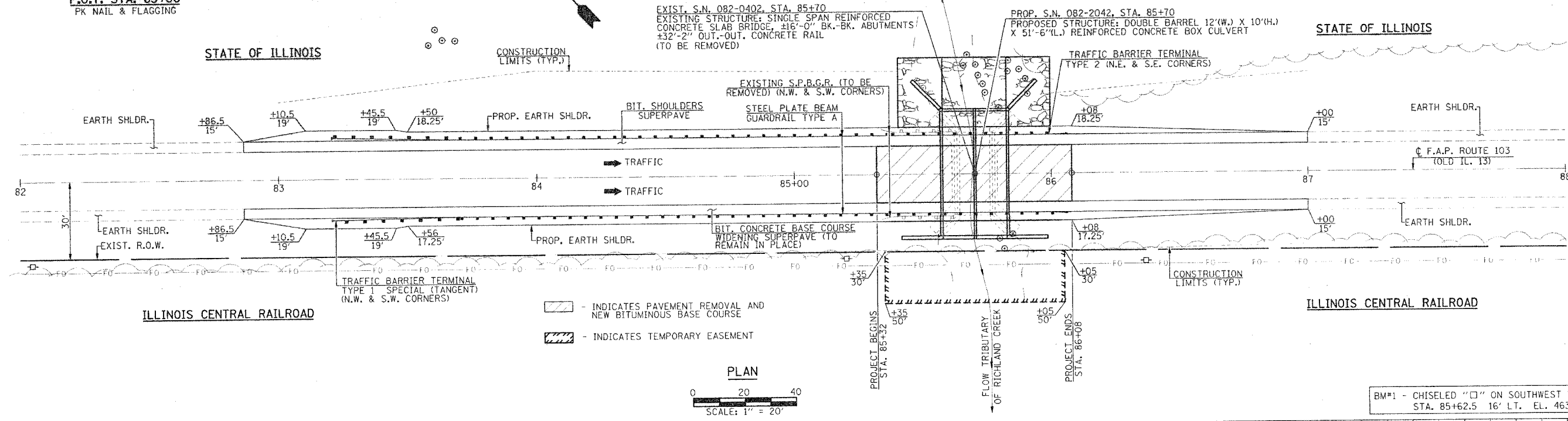
SECTION 35, T. 1 N., R. 8 W., 3rd P.M.

F.A.P. RTE.	SECTION	COUNTY	TOTAL SHEETS	SHEET NO.
103	27-3BR	ST. CLAIR	22	6
STA. 85+32 TO STA. 86+08				
FED. ROAD DIST. NO. ILLINOIS FED. AID PROJECT				
CONTRACT NO. 76411				

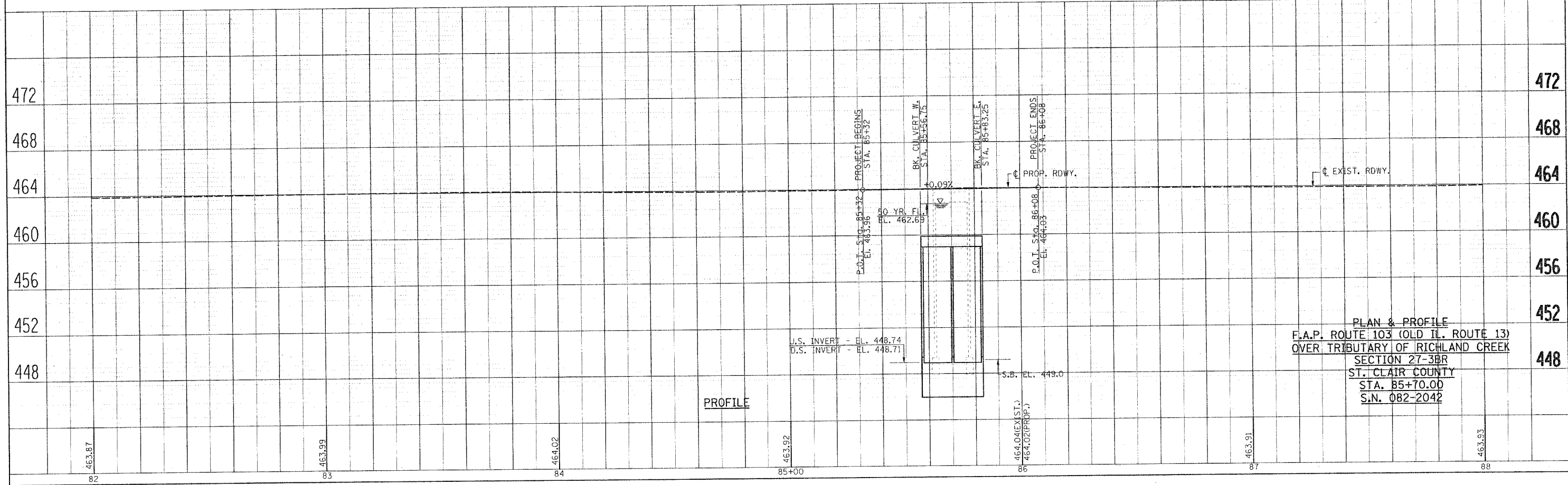


DATE	BY	REVISION

DATE	BY	REVISION



BM#1 - CHISELED "□" ON SOUTHWEST WINGWALL
STA. 85+62.5 16' LT. EL. 463.44



PLAN & PROFILE
F.A.P. ROUTE 103 (OLD IL. ROUTE 13)
OVER TRIBUTARY OF RICHLAND CREEK
SECTION 27-3BR
ST. CLAIR COUNTY
STA. 85+70.00
S.N. 082-2042