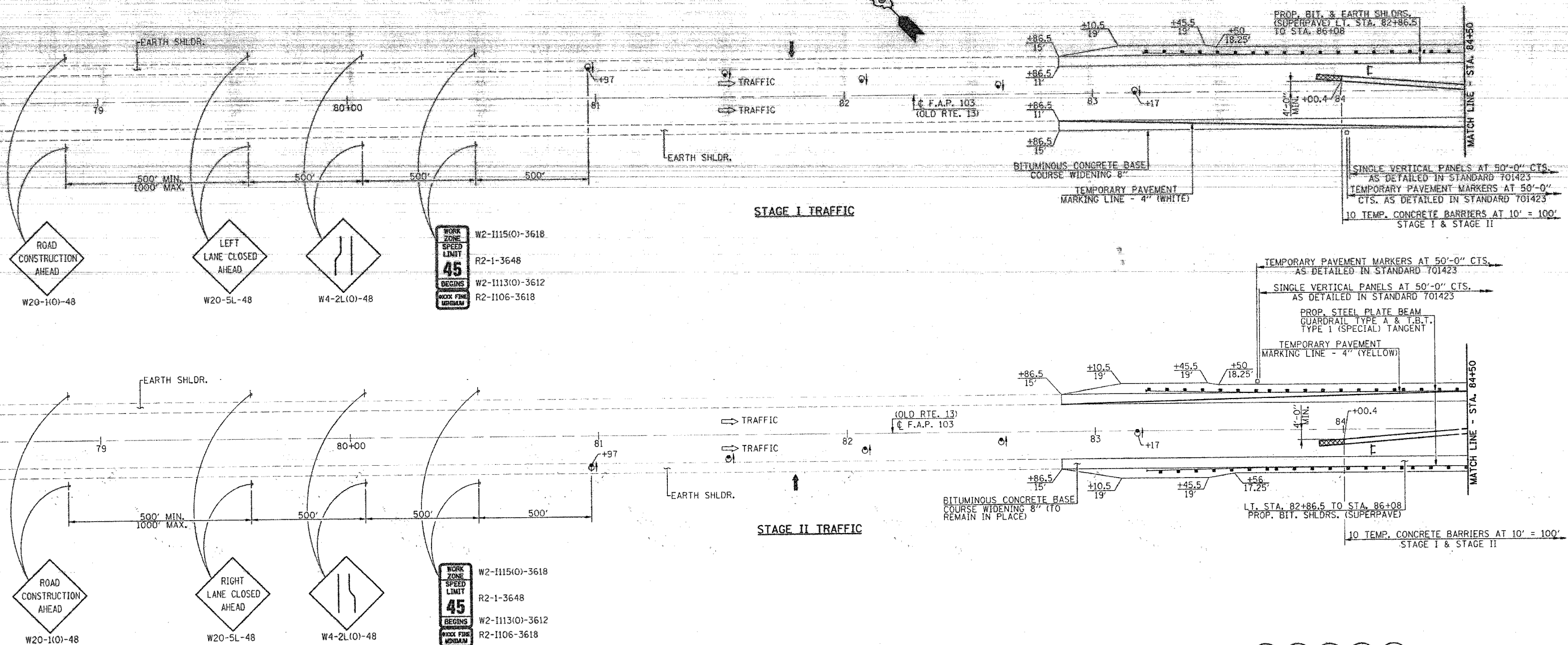


F.A.P. SECTION	COUNTY	TOTAL SHEETS	SHEET NO.
103 - 27-3BR	ST. CLAIR	22	8
STA. 85+32 TO STA. 86+08			
FED. ROAD DIST. NO. 111015 FED. AID PROJECT			
CONTRACT NO. 76411			

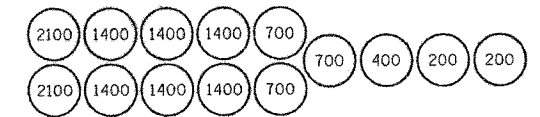


**SUGGESTED STAGE CONSTRUCTION SEQUENCE**

- STAGE I**
- CONSTRUCT BITUMINOUS CONCRETE BASE COURSE WIDENING 8" RT. STA. 82+86.5 TO STA. 87+00 - (4'-0" WIDE).
  - ERECT TRAFFIC CONTROL FOR STAGE I.
  - REMOVE EXISTING STRUCTURE LEFT, @ STA. 85+70.
  - CONSTRUCT PROPOSED STAGE I DOUBLE BARREL 12' x 10' REINFORCED CONCRETE BOX CULVERT.
  - CONSTRUCT PROPOSED BITUMINOUS & EARTH SHOULDERS LT. STA. 82+86.5 TO STA. 87+00.
  - CONSTRUCT PROPOSED GUARDRAIL & TERMINALS LT. STA. 83+20.5 TO STA. 85+95.5.
  - CONSTRUCT BITUMINOUS BASE COURSE AND SURFACE COURSE.
- STAGE II**
- ERECT TRAFFIC CONTROL FOR STAGE II.
  - REMOVE EXISTING STRUCTURE RT. @ STA. 85+70.
  - CONSTRUCT PROPOSED STAGE II DOUBLE BARREL 12' x 10' REINFORCED CONCRETE BOX CULVERT AND END SECTIONS.
  - CONSTRUCT PROPOSED BITUMINOUS & EARTH SHOULDERS SHOULDERS RT. STA. 82+86.5 TO STA. 87+00.
  - CONSTRUCT PROPOSED GUARDRAIL & TERMINALS RT. STA. 83+20.5 TO STA. 85+95.5.
  - CONSTRUCT BITUMINOUS BASE COURSE AND SURFACE COURSE.
- FINAL**
- INSTALL SHORT-TERM PAVEMENT MARKINGS AND REMOVE ALL STAGE TRAFFIC CONTROL AND RE-ESTABLISH NORMAL TRAFFIC PATTERNS.
  - FINAL STRIPING, SEEDING AND MISCELLANEOUS CLEANUP.

**GENERAL NOTES**

- THE CONTRACTOR SHALL NOTIFY THE DISTRICT 8 TRAFFIC SECTION OF THE BUREAU OF OPERATIONS AT LEAST ONE WEEK PRIOR TO IMPLEMENTING STAGE TRAFFIC CONTROL.
- EXISTING PAVEMENT MARKINGS THAT CONFLICT WITH THE REVISED STAGE TRAFFIC PATTERNS DURING ALL PHASES OF STAGE CONSTRUCTION SHALL BE REMOVED AS SPECIFIC IN SECTION 783 OF THE STANDARD SPECIFICATIONS AND PAID FOR AS "PAVEMENT MARKING REMOVAL".
- THE CONTRACTOR SHALL MAINTAIN FULL OPERATIONAL STATUS OF ALL SIDEROADS AND ACCESS TO ALL PRIVATE AND COMMERCIAL PROPERTIES DURING ALL PHASES OF CONSTRUCTION.
- TEMPORARY CONCRETE BARRIER. THE BARRIER UNIT AT EACH END OF THE INSTALLATION SHALL BE SECURED TO THE PAVEMENT OR SHOULDER USING ALL SIX ANCHORING PINS FOR F SHAPE OR ALL SIX DOWEL BARS FOR NEW JERSEY SHAPE.
- EXISTING POSTED SPEED LIMIT IS 55 MPH.



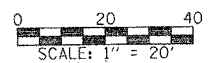
**BARREL IMPACT ATTENUATOR DIAGRAM**  
 IF SAND BARRELS ARE USED FOR IMPACT ATTENUATORS REFER TO THIS BARREL LAYOUT DIAGRAM. SAND MASS (POUNDS) ARE SHOWN FOR EACH BARREL.

**SYMBOLS**

- ↑ ARROW BOARD
- ▨ WORK AREA
- ⊙ DRUM WITH STEADY BURNING LIGHT
- ◇ TYPE C BIDIRECTIONAL REFLECTOR
- ▬ TEMPORARY CONCRETE BARRIER
- ▬ IMPACT ATTENUATOR
- ⊙ DIRECTIONAL INDICATOR BARRICADE WITH STEADY BURNING LIGHT
- ⊞ SIGN
- ◻ WHITE BI-DIRECTIONAL TEMPORARY PAVEMENT MARKER
- ⊞ TYPE III BARRICADE

SEE SHEET NO. 9 FOR TRAFFIC CONTROL & TEMPORARY PAVEMENT MARKING SCHEDULES.  
 WORK THIS SHEET WITH SHEETS 7 & 9 OF 22 SHEETS.

**STAGE CONSTRUCTION TRAFFIC DETAILS**  
 F.A.P. ROUTE 103 (OLD IL. ROUTE 13)  
 OVER TRIBUTARY OF RICHLAND CREEK  
 SECTION 27-3BR  
 ST. CLAIR COUNTY  
 STA. 85+70.00  
 S.N. 082-2042



FILE NAME: SH1008 (REV. 10/11/05)