

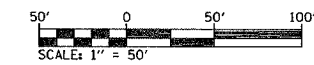
PLAN	DATE	BY
REVIEWED		
DESIGNED		
CHECKED		
DATE		
BY		



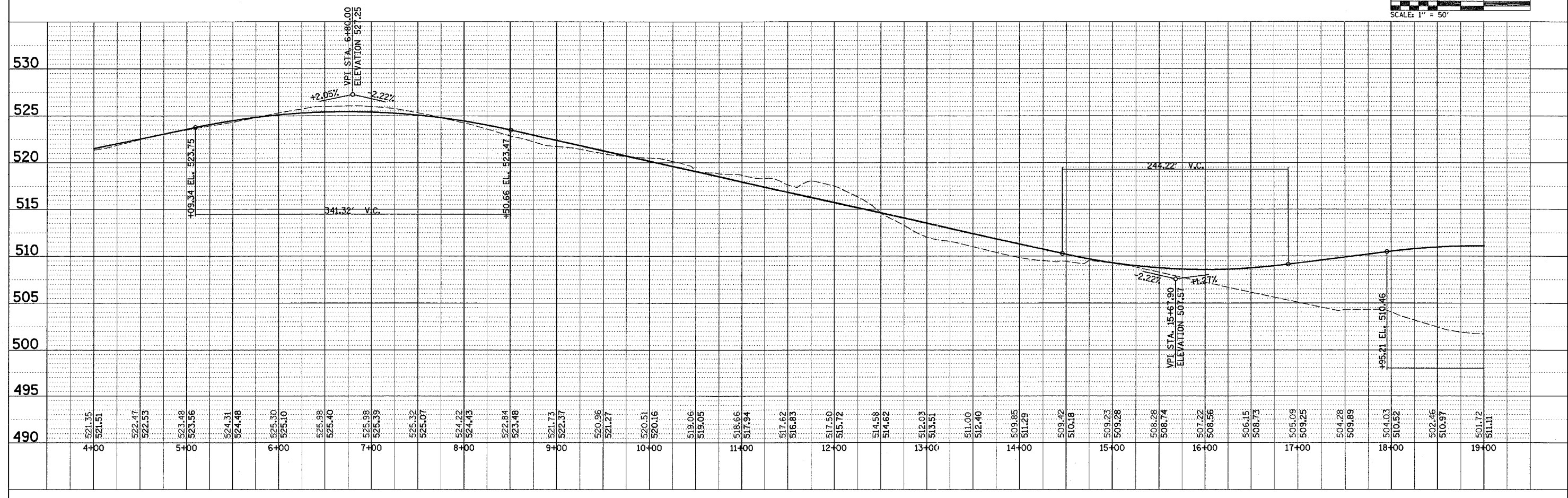
PROP. CURVE EPRRA1-3  
 PI STA. = 10+82.00  
 $\Delta = 17^\circ 33' 30''$  (LT)  
 $D = 12^\circ 47' 21''$   
 $R = 448.00'$   
 $T = 69.19'$   
 $L = 137.29'$   
 $E = 5.31'$   
 $\theta =$   
 T.R. =  
 S.E. RUN =  
 P.C. STA. = 10+12.81  
 P.T. STA. = 11+50.10

PROP. CURVE EPRRA1-4  
 PI STA. = 12+70.34  
 $\Delta = 17^\circ 31' 17''$  (RT)  
 $D = 12^\circ 08' 20''$   
 $R = 472.00'$   
 $T = 72.74'$   
 $L = 144.34'$   
 $E = 5.57'$   
 $\theta =$   
 T.R. =  
 S.E. RUN =  
 P.C. STA. = 11+97.60  
 P.T. STA. = 13+41.95

PROP. CURVE EPRRA1-5  
 PI STA. = 16+75.98  
 $\Delta = 12^\circ 53' 12''$  (RT)  
 $D = 12^\circ 27' 20''$   
 $R = 460.00'$   
 $T = 51.95'$   
 $L = 103.46'$   
 $E = 2.92'$   
 $\theta =$   
 T.R. =  
 S.E. RUN =  
 P.C. STA. = 16+24.03  
 P.T. STA. = 17+27.49



PROFILE	DATE	BY
REVIEWED		
DESIGNED		
CHECKED		
DATE		
BY		



6/5/2006  
 6/5/2006  
 6/5/2006