

F.A. RTE.	SECTION	COUNTY	TOTAL SHEETS	SHEET NO.
•	••	ST. CLAIR	15	1

• FAP 582/FAU 9237
 •• 82-3HB-1I, 82-3VB-1I

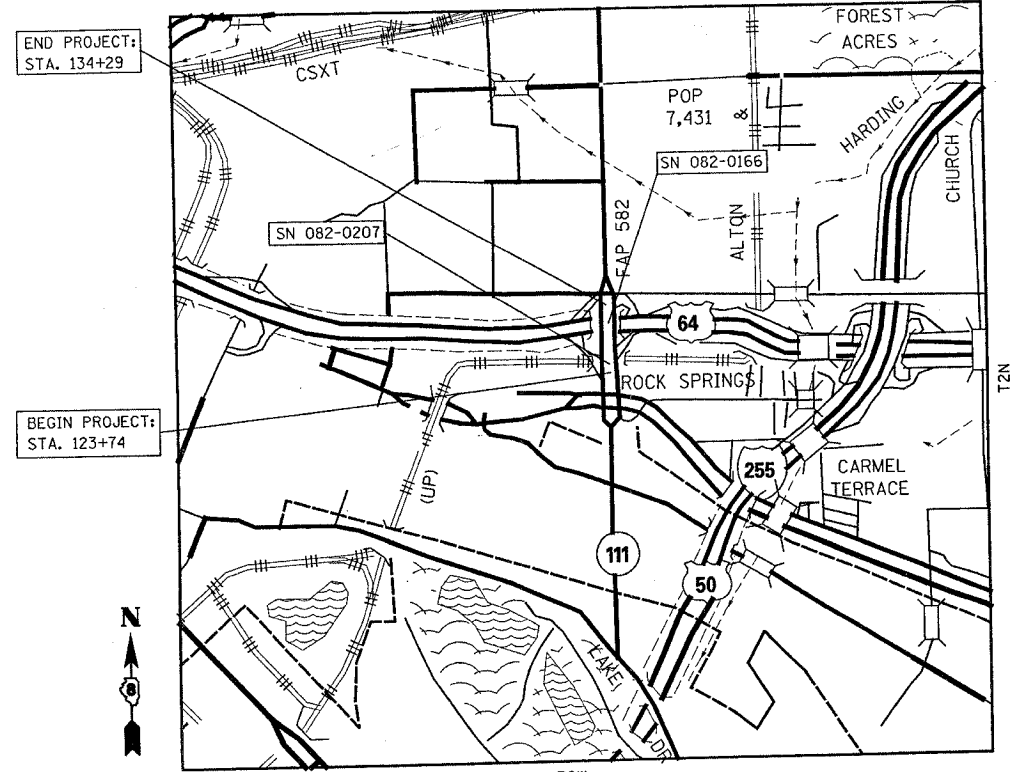
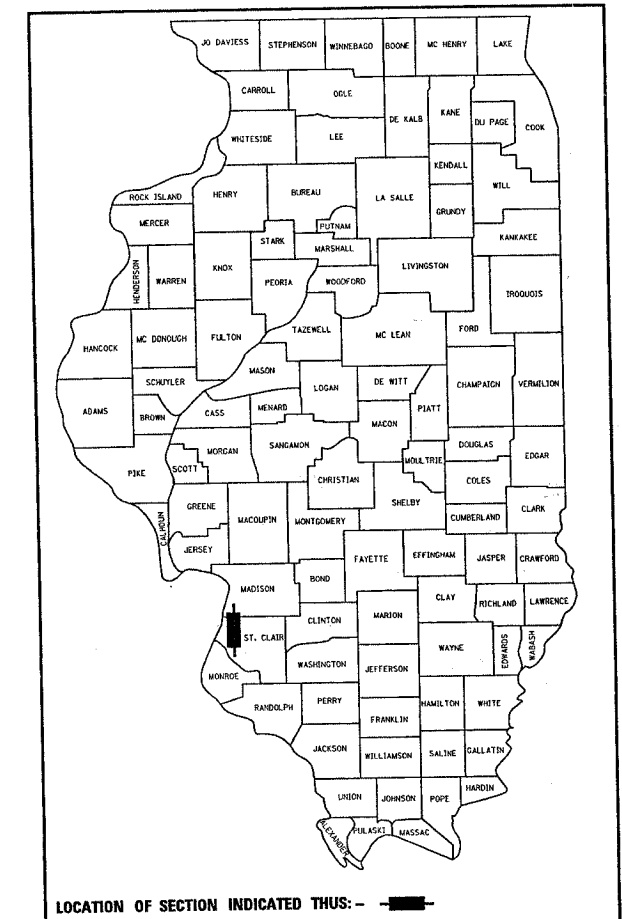
PROJECT LEADER: TIM KRUMM (618)346-3257
 PROJECT ENGINEER: WENDA SOUTHERLAND (618)346-3159
 SQUAD LEADER: GREG HANCOCK (618)346-3196

STATE OF ILLINOIS
 DEPARTMENT OF TRANSPORTATION
 DIVISION OF HIGHWAYS

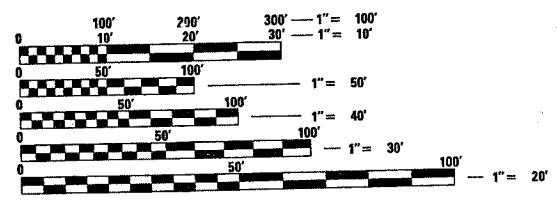
PLANS FOR PROPOSED
 FEDERAL AID HIGHWAY
 FAP 582/FAU 9237 (IL ROUTE 111)
 SECTION 82-3HB-1I, 82-3VB-1I
 PROJECT NO.
 ST. CLAIR COUNTY
 C-98-068-05

INDEX OF SHEETS, SHEET 2

D-98-050-05



LOCATION MAP
 NOT TO SCALE



FULL SIZE PLANS HAVE BEEN PREPARED USING STANDARD ENGINEERING SCALES. REDUCED SIZED PLANS WILL NOT CONFORM TO STANDARD SCALES. IN MAKING MEASUREMENTS ON REDUCED PLANS, THE ABOVE SCALES MAY BE USED.

J.U.L.I.E.
 JOINT UTILITY LOCATION INFORMATION FOR EXCAVATION
 1-800-892-0123

ADT
 17,800 (2003)
 M.U. = 1.1%
 S.U. = 3.7%
 P.V. = 95.6%

BEGIN PROJECT: LAT: 38.61915
 LONG: -90.09299
 END PROJECT: LAT: 38.62189
 LONG: -90.09298

GROSS LENGTH: 1056.00 FEET = 0.20 MILES
 NET LENGTH: 1056.00 FEET = 0.20 MILES

STATE OF ILLINOIS
 DEPARTMENT OF TRANSPORTATION
 DIVISION OF HIGHWAYS

SUBMITTED March 30, 2006
Maryc Lemie
 DEPUTY DIRECTOR OF HIGHWAYS
 REGION FIVE ENGINEER

May 12, 2006
Mike Stine
 ENGINEER OF DESIGN AND ENVIRONMENT

May 12, 2006
Milton R. Sees, P.E.
 DIRECTOR OF HIGHWAYS, CHIEF ENGINEER

PRINTED BY THE AUTHORITY
 OF THE STATE OF ILLINOIS

CONTRACT NO. 76907

F.A. RTE.	SECTION	COUNTY	TOTAL SHEETS	SHEET NO.
•	••	ST. CLAIR	15	2

• FAP 582/FAU 9237
 •• 82-3HB-II, 82-3VB-II

GENERAL NOTES

- 1) THE STANDARDS AND REVISION NUMBERS LISTED SHALL APPLY TO THIS PROJECT.
- 2) ILLINOIS STATE LAW REQUIRES A 48 HOUR NOTICE BE GIVEN TO UTILITIES BEFORE DIGGING. FIELD MARKING OF FACILITIES MAY BE OBTAINED BY CONTACTING J.U.L.I.E. OR FOR NON-MEMBERS, THE UTILITY COMPANY DIRECTLY. AGENCIES KNOWN TO HAVE FACILITIES WITHIN THE PROJECT AREA ARE AS FOLLOWS:
 - AMERENIP (GAS)
 - AMEREN-UE (ELECTRIC)
 - CENTER POINT ENERGY (GAS TRANSMISSION)
 - CHARTER COMMUNICATIONS, INC. (CABLE TV)
 - ILLINOIS AMERICAN WATER CO. (WATER)
 - MARATHON ASHLAND PIPELINE, LLC (PIPELINE)
 - SBC (COMMUNICATIONS)

(MEMBERS OF J.U.L.I.E. (800) 892-0123 ARE INDICATED BY •. NON-J.U.L.I.E. MEMBERS MUST BE NOTIFIED INDIVIDUALLY.)
- 3) "ROAD CONSTRUCTION AHEAD" SIGNS SHALL BE PLACED AT THE BEGINNING AND END OF THE PROJECT PLUS THE INTERSECTING SIDE ROADS, AND WILL BE CONSIDERED INCLUDED IN THE TRAFFIC CONTROL PAY ITEMS. ALL CONSTRUCTION SIGNS SHALL BE FLUORESCENT ORANGE.
- 4) ALL DIMENSIONS ARE IN FEET UNLESS OTHERWISE NOTED.
- 5) THE THICKNESS OF THE BITUMINOUS MIXTURE SHOWN ON THE PLANS IS THE NOMINAL THICKNESS. DEVIATIONS FROM THE NOMINAL THICKNESS WILL BE PERMITTED WHEN SUCH DEVIATIONS OCCUR DUE TO IRREGULARITIES IN THE EXISTING SURFACE OR BASE ON WHICH THE BITUMINOUS MIXTURE IS PLACED.
- 6) WHERE SECTION OR SUB-SECTION MONUMENTS ARE ENCOUNTERED THE ENGINEER SHALL BE NOTIFIED BEFORE SUCH MONUMENTS ARE REMOVED. THE CONTRACTOR SHALL PROTECT AND CAREFULLY PRESERVE ALL PROPERTY MARKERS AND MONUMENTS UNTIL THE OWNER, AN AUTHORIZED SUREYOR, OR AGENT HAS WITNESSED OR OTHERWISE REFERENCED THE LOCATION.
- 7) THE CONTRACTOR SHALL VERIFY ALL THE DIMENSIONS AND CONDITIONS IN THE FIELD PRIOR TO CONSTRUCTION AND ORDERING OF MATERIALS.
- 8) SHORT TERM PAVEMENT MARKING SHALL BE APPLIED TO THE MILLED, PRIMED, BINDER, AND SURFACE COURSE. ONLY THE REMOVAL OF THE FINAL SURFACE APPLICATION WILL BE PAID FOR (WORK ZONE PAVEMENT MARKING REMOVAL - SQ FT). AN AMOUNT OF TEMPORARY PAVEMENT MARKING WHICH EQUALS THE AMOUNT OF PERMANENT PAVEMENT MARKING HAS ALSO BEEN ADDED TO THE PLANS.
- 9) THE ESTIMATED TONNAGE OF MILLED MATERIAL IS 6079.
- 10) TEMPORARY RAMPS SHALL BE PROVIDED AT THE BEGINING AND END OF THE RESURFACING SECTIONS (BUTT JOINTS) AND AT THE MILLING TRANSITIONS.
- 11) SAWCUTTING ON ALL EDGES FOR REMOVAL ITEMS SHALL BE INCLUDED IN THE COST OF THE REMOVAL ITEM AS INDICATED AND IN ACCORDANCE WITH THE STANDARD SPECIFICATIONS.
- 12) THE FOLLOWING MIXTURE REQUIREMENTS ARE APPLICABLE FOR THIS PROJECT:

MIX REQUIREMENT CHART

MIXTURE USE	SURFACE	LEVELING BINDER	SHOULDER	TOP LIFT SHOULDER
AC/PG	PG 70-22	PG 64-22	PG 58-22	PG 58-22
RAP % (MAX)	10%	10%		30%
DESIGN AIR VOIDS	4.0% @ Ndes=70	4.0% @ Ndes=70	2.0% @ Ndes=30**	2.0% @ Ndes=30**
MIX COMPOSITION (GRADATION MIXTURE)				
FRICTION AGG	MIX "D"	MIX "C"	BAM	BAM

** TOP LIFT SHOULDER - DESIGN THIS MIX AT 2.0% VOIDS AND ADD ASPHALT TO REDUCE VOIDS TO 1.5%

PLAN QUANTITIES FOR BITUMINOUS CONCRETE SURFACE COURSE ITEMS ARE CALCULATED USING A WEIGHT OF 112 LB/SQ YD/IN (59.8 KG/SQ M/25MM THICKNESS).

INDEX OF SHEETS

1	COVER SHEET
2	INDEX OF SHEETS, STANDARDS, COMMITMENTS, AND GENERAL NOTES
3	SUMMARY OF QUANTITIES
4	TYPICAL SECTION
5	TYPICAL SECTION (BRIDGE)
6	MISC. SCHEDULES
7	PLAN VIEW (REMOVAL)
8	PLAN VIEW
9	PAVEMENT MARKING
10	PLAN VIEW (S.N. 082-0207)
11	PLAN VIEW (S.N. 082-0166)
12-14	MISC. DETAILS
15	ELECTRICAL PLAN VIEW

STANDARDS

482011-01	781001-02
701601-04	886001
701801-03	886006
702001-06	001006
780001-01	

COMMITMENTS

NONE

••DATE••
 •DATE-TIME•
 •REF. SEC•
 •REF•

REVISIONS		ILLINOIS DEPARTMENT OF TRANSPORTATION INDEX OF SHEETS, STANDARDS, COMMITMENTS, AND GENERAL NOTES FAP 582/FAU 9237 (IL ROUTE 111) SECTION 82-3HB-II, 82-3VB-II ST. CLAIR COUNTY
NAME	DATE	
		SCALE: VERT. HORIZ. DATE: DRAWN BY CHECKED BY

SUMMARY OF QUANTITIES

F.A. RTE.	SECTION	COUNTY	TOTAL SHEETS	SHEET NO.
	..	ST. CLAIR	15	3

• FAP 582/FAU 9237
 •• 82-3HB-11, 82-3VB-11

SUMMARY OF QUANTITIES			CONSTRUCTION TYPE CODE	
CODE NO	ITEM	UNIT	TOTAL QUANTITIES	SFTY-2A 100% STATE URBAN
40300200	BITUMINOUS MATERIALS (PRIME COAT)	TON	2	2
40600300	AGGREGATE (PRIME COAT)	TON	10	10
40600985	PORTLAND CEMENT CONCRETE SURFACE REMOVAL - BUTT JOINT	SQ YD	222	222
40600990	TEMPORARY RAMP	SQ YD	427	427
44000030	BITUMINOUS SURFACE REMOVAL (VARIABLE DEPTH)	SQ YD	2770	2770
44000910	BITUMINOUS CONCRETE REMOVAL (DECK)	SQ YD	3309	3309
48202000	BITUMINOUS SHOULDERS SUPERPAVE	TON	139	139
58100200	WATERPROOFING MEMBRANE SYSTEM	SQ YD	3309	3309
67000400	ENGINEER'S FIELD OFFICE, TYPE A	CAL MO	6	6
67100100	MOBILIZATION	L SUM	1	1
70102630	TRAFFIC CONTROL AND PROTECTION, STANDARD 701601	L SUM	1	1
70102640	TRAFFIC CONTROL AND PROTECTION, STANDARD 701801	L SUM	1	1
70300100	SHORT-TERM PAVEMENT MARKING	FOOT	576	576
70300220	TEMPORARY PAVEMENT MARKING - LINE 4"	FOOT	4692	4692
70300250	TEMPORARY PAVEMENT MARKING - LINE 8"	FOOT	465	465
70300280	TEMPORARY PAVEMENT MARKING - LINE 24"	FOOT	44	44
70301000	WORK ZONE PAVEMENT MARKING REMOVAL	SQ FT	192	192
* 78001110	PAINT PAVEMENT MARKING - LINE 4"	FOOT	4617	4617
* 78001140	PAINT PAVEMENT MARKING - LINE 8"	FOOT	465	465
* 78001150	PAINT PAVEMENT MARKING - LINE 12"	FOOT	26	26
* 78001180	PAINT PAVEMENT MARKING - LINE 24"	FOOT	44	44
* 78100100	RAISED REFLECTIVE PAVEMENT MARKER	EACH	33	33
* 78100105	RAISED REFLECTIVE PAVEMENT MARKER (BRIDGE)	EACH	10	10
78300200	RAISED REFLECTIVE PAVEMENT MARKER REMOVAL	EACH	40	40
* 88600600	DETECTOR LOOP REPLACEMENT	FOOT	97	97
X0320887	POLYMER CONCRETE	CU FT	26.7	26.7
X0321468	PLUG EXISTING DECK DRAINS	EACH	48	48
X0322932	SILICONE JOINT SEALER, 1.5"	FOOT	182	182
X0322933	SILICONE JOINT SEALER, 2.5"	FOOT	182	182
X4066426	BITUMINOUS CONCRETE SURFACE COURSE, SUPERPAVE, MIX "D", N70	TON	734	734
X4066770	LEVELING BINDER (MACHINE METHOD), SUPERPAVE N70	TON	277	277

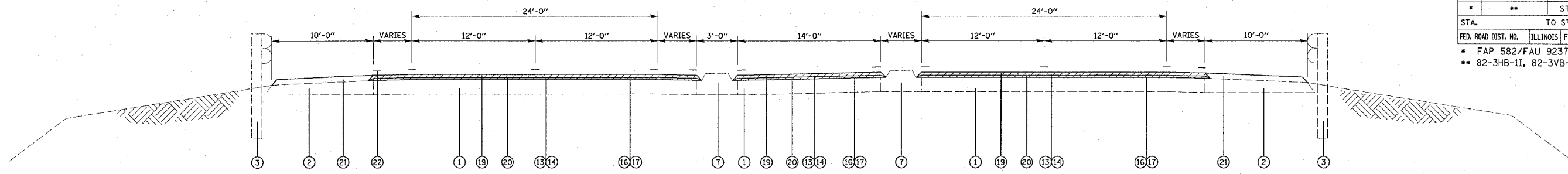
SUMMARY OF QUANTITIES			CONSTRUCTION TYPE CODE	
CODE NO	ITEM	UNIT	TOTAL QUANTITIES	SFTY-2A 100% STATE URBAN
Z0015595	DECK DRAIN EXTENSIONS	EACH	43	43
Z0016200	DECK SLAB REPAIR (PARTIAL)	SQ YD	6.4	6.4
Z0048665	RAILROAD PROTECTIVE LIABILITY INSURANCE	L SUM	1	1

Rev.

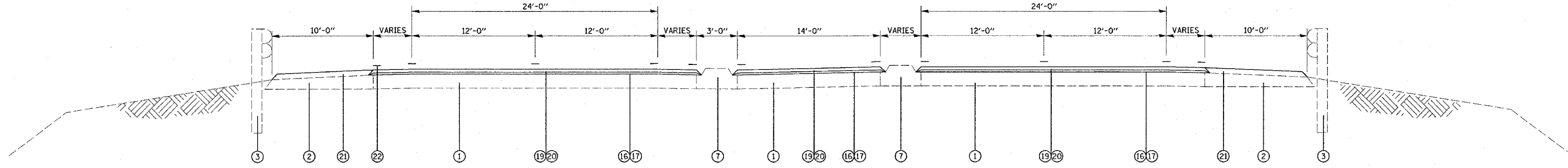
*SPECIALTY ITEMS

SHORTESS
 DATE-TIME
 CON-SPEC
 REF

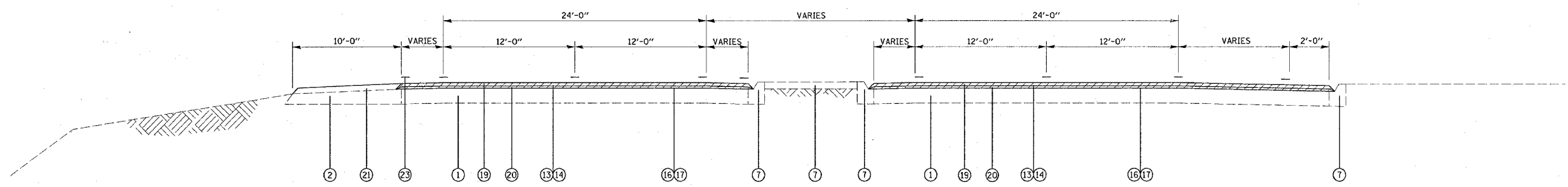
F.A. RTE.	SECTION	COUNTY	TOTAL SHEETS	SHEET NO.
*	**	ST. CLAIR	15	4
STA. TO STA.		ILLINOIS FED. AID PROJECT		
FED. ROAD DIST. NO.		FAP 582/FAU 9237		
		82-3HB-1I, 82-3VB-1I		



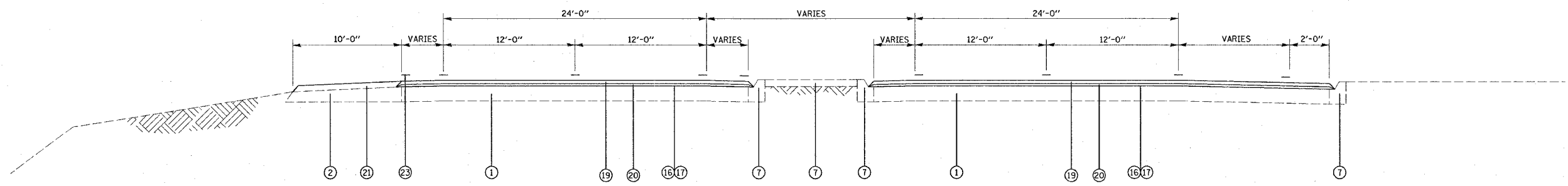
TYPICAL SECTION
STA. 129+68 TO STA. 130+58
STA. 133+24 TO STA. 134+29



TYPICAL SECTION
STA. 127+48 TO STA. 129+68



TYPICAL SECTION
STA. 123+74 TO STA. 124+84
STA. 126+15 TO STA. 126+55



TYPICAL SECTION
STA. 126+55 TO STA. 127+48

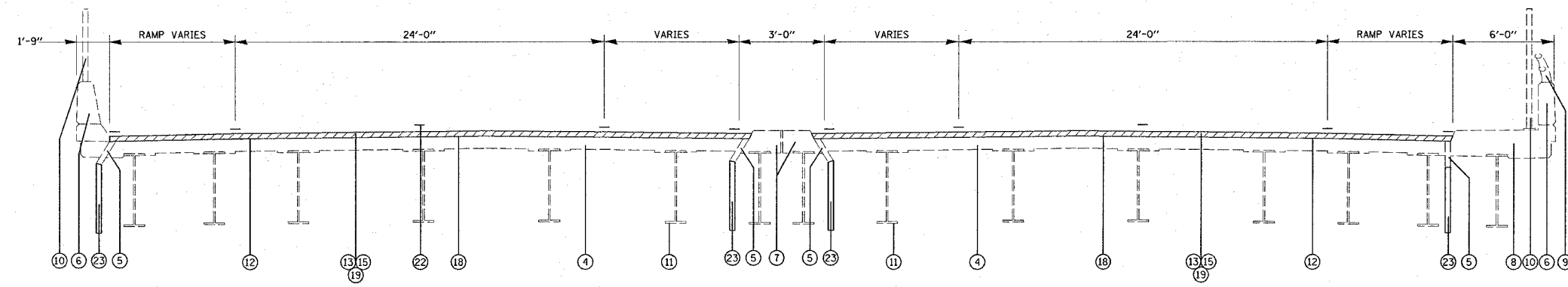
- ① EXISTING REINFORCED CONCRETE PAVEMENT 8"
- ② EXISTING BITUMINOUS SHOULDER 8"
- ③ EXISTING GUARDRAIL
- ④ EXISTING REINFORCED CONCRETE BRIDGE DECK, 7" OR 7 1/2"
- ⑤ EXISTING DECK DRAIN
- ⑥ EXISTING CONCRETE PARAPET
- ⑦ EXISTING CONCRETE MEDIAN AND CURB
- ⑧ EXISTING CONCRETE SIDEWALK
- ⑨ EXISTING ALUMINUM BRIDGE RAIL
- ⑩ EXISTING PROTECTIVE SCREEN
- ⑪ EXISTING #36 STEEL GIRDER
- ⑫ EXISTING WATERPROOFING MEMBRANE SYSTEM
- ⑬ EXISTING BITUMINOUS SURFACE COURSE, VARIABLE DEPTH (APPROACH), 1/2" (DECK)
- ⑭ PROPOSED BITUMINOUS SURFACE REMOVAL, (VARIABLE DEPTH)
- ⑮ PROPOSED BITUMINOUS SURFACE REMOVAL (DECK), 1/2"
- ⑯ PROPOSED BITUMINOUS MATERIAL (PRIME COAT)
- ⑰ PROPOSED AGGREGATE (PRIME COAT)
- ⑱ PROPOSED WATERPROOFING MEMBRANE SYSTEM 1/2"
- ⑲ PROPOSED BITUMINOUS CONCRETE SURFACE COURSE, SUPERPAVE, MIX "D", NTO, 1 1/2"
- ⑳ PROPOSED LEVELING BINDER (MACHINE METHOD), SUPERPAVE, NTO, 1"
- ㉑ BITUMINOUS SHOULDER, 2 1/2"
- ㉒ PROPOSED PAINT PAVEMENT MARKING
- ㉓ PROPOSED DECK DRAIN EXTENSION

PLOT DATE = #DATE#
FILE NAME = #FILE#
PLOT SCALE = #SCALE#
REFERENCE = #REF#

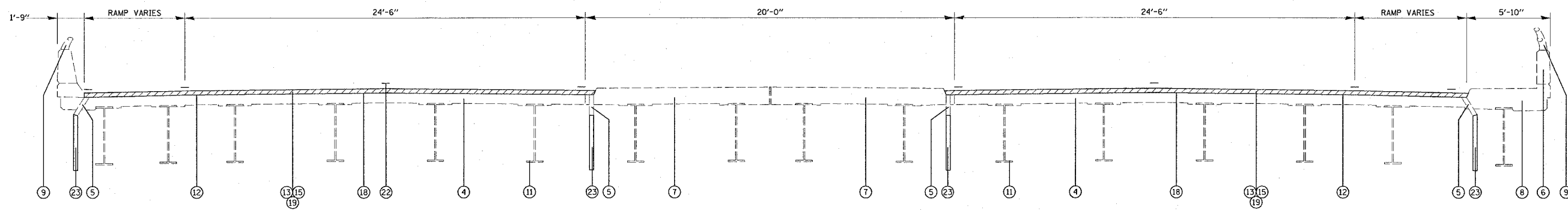
REVISIONS	
NAME	DATE

ILLINOIS DEPARTMENT OF TRANSPORTATION
TYPICAL SECTION
FAP 582/FAU 9237 (IL ROUTE 111)
SECTION 82-3HB-1I, 82-3VB-1I
ST. CLAIR COUNTY
SCALE: VERT. _____
 HORIZ. _____
DATE _____ DRAWN BY _____
 CHECKED BY _____

F.A. RTE.	SECTION	COUNTY	TOTAL SHEETS	SHEET NO.
•	**	ST. CLAIR	15	5
STA.		TO STA.		
FED. ROAD DIST. NO.	ILLINOIS	FED. AID PROJECT		
• FAP 582/FAU 9237				
•• 82-3HB-1I, 82-3VB-1I				



TYPICAL SECTION (082-0166)
S.N. 082-0166 LOOKING NORTH
STA. 130+58 TO STA. 133+24



TYPICAL SECTION (082-0207)
S.N. 082-0207 LOOKING NORTH
STA. 124+84 TO STA. 126+15

- ① EXISTING REINFORCED CONCRETE PAVEMENT 8"
- ② EXISTING BITUMINOUS SHOULDER 8"
- ③ EXISTING GUARDRAIL
- ④ EXISTING REINFORCED CONCRETE BRIDGE DECK, 7" OR 7 1/2"
- ⑤ EXISTING DECK DRAIN
- ⑥ EXISTING CONCRETE PARAPET
- ⑦ EXISTING CONCRETE MEDIAN AND CURB
- ⑧ EXISTING CONCRETE SIDEWALK
- ⑨ EXISTING ALUMINUM BRIDGE RAIL
- ⑩ EXISTING PROTECTIVE SCREEN
- ⑪ EXISTING W36 STEEL GIRDER
- ⑫ EXISTING WATERPROOFING MEMBRANE SYSTEM
- ⑬ EXISTING BITUMINOUS SURFACE COURSE, VARIABLE DEPTH (APPROACH), 1 1/2" (DECK)
- ⑭ PROPOSED BITUMINOUS SURFACE REMOVAL, (VARIABLE DEPTH)
- ⑮ PROPOSED BITUMINOUS SURFACE REMOVAL (DECK), 1 1/2"
- ⑯ PROPOSED BITUMINOUS MATERIAL (PRIME COAT)
- ⑰ PROPOSED AGGREGATE (PRIME COAT)
- ⑱ PROPOSED WATERPROOFING MEMBRANE SYSTEM 1/2"
- ⑲ PROPOSED BITUMINOUS CONCRETE SURFACE COURSE, SUPERPAVE, MIX "D", N70, 1 1/2"
- ⑳ PROPOSED LEVELING BINDER (MACHINE METHOD), SUPERPAVE, N70, 1"
- ㉑ BITUMINOUS SHOULDER, 2 1/2"
- ㉒ PROPOSED PAINT PAVEMENT MARKING
- ㉓ PROPOSED DECK DRAIN EXTENSION

PLOT DATE = #DATE#
FILE NAME = #FILE#
PLOT SCALE = #SCALE#
REFERENCE = #REF#

REVISIONS	
NAME	DATE

ILLINOIS DEPARTMENT OF TRANSPORTATION
TYPICAL SECTION (BRIDGE)

FAP 582/FAU 9237 (IL ROUTE 111)
SECTION 82-3HB-1I, 82-3VB-1I
ST. CLAIR COUNTY

SCALE: VERT. _____
HORIZ. _____

DATE _____ DRAWN BY _____
CHECKED BY _____

F.A. RTE.	SECTION	COUNTY	TOTAL SHEETS	SHEET NO.
*	**	ST. CLAIR	15	6

FED. ROAD DIST. NO. ILLINOIS FED. AID PROJECT
 * FAP 582/FAU 9237
 ** 82-3HB-II, 82-3VB-II

LOCATION STA. TO STA.	SKIP DASH YELLOW 4" (FOOT)		SOLID YELLOW 4" (FOOT)		SOLID WHITE 4" (FOOT)		SOLID WHITE 8" (FOOT)		SOLID STOP BAR 12" (FOOT)		SOLID STOP BAR 24" (FOOT)		RAISED REFLECTIVE PAVEMENT MARKER (EACH)		RAISED REFLECTIVE PAVEMENT MARKER (BRIDGE) (EACH)		RAISED REFLECTIVE PAVEMENT MARKER REMOVAL (EACH)	
	N.B.	S.B.	N.B.	S.B.	N.B.	S.B.	N.B.	S.B.	N.B.	S.B.	N.B.	S.B.	N.B.	S.B.	N.B.	S.B.	N.B.	S.B.
123+74 TO 124+84	28	27	110	110	110	110							2	1			1	
124+84 TO 126+15	33	33	131	131	131	131									2	1	2	1
126+15 TO 130+58	111	111	303	590	215	133	225	115					5	6			6	5
130+58 TO 133+24	67	66	266	266	266	266									3	4	3	3
133+24 TO 134+29	27	26	105	105	52	53		9					2	1			2	1
RAMP C						93												
RAMP D						46				44								
RAMP E						180		69	26				9					9
RAMP F						185		47					7					7
SUB-TOTAL			529		2117	1981												
TOTAL					4617		465	26	44	33	10	40						

LOCATION STA. TO STA.	BITUMINOUS SURFACE REMOVAL (VARIABLE DEPTH) SQYD	WATERPROOFING MEMBRANE SYSTEM SQYD	BITUMINOUS CONCRETE REMOVAL (DECK) SQYD	LEVELING BINDER (MACHINE METHOD), SUPERPAVE N70, 1" TON	BITUMINOUS CONCRETE SURFACING COURSE, SUPERPAVE, MIX "0", N70, 1 1/2" TON	BITUMINOUS MATERIAL (PRIME COAT) TON	AGGREGATE (PRIME COAT) TON	BITUMINOUS SHOULDER 2 1/2" TON
123+74 TO 124+84	587			33	49	0.2	0.9	24
124+84 TO 126+15		933	933	74	74			
126+15 TO 130+58	1029			145	245	0.9	4.2	60
130+58 TO 133+24		2376	2376	198	198			
133+24 TO 134+29	924			31	62	0.2	1.1	20
RAMP C				10	16	0.1	0.3	
RAMP D	230			11	21	0.1	0.4	1
RAMP E				25	39	0.1	0.7	16
RAMP F				21	30	0.2	0.5	18
TOTAL	2770	3309	3309	276	734	1.8	8.1	139

PLOT DATE = #DATE*
 PLOT SCALE = #SCALE*
 REFERENCE = #REF*

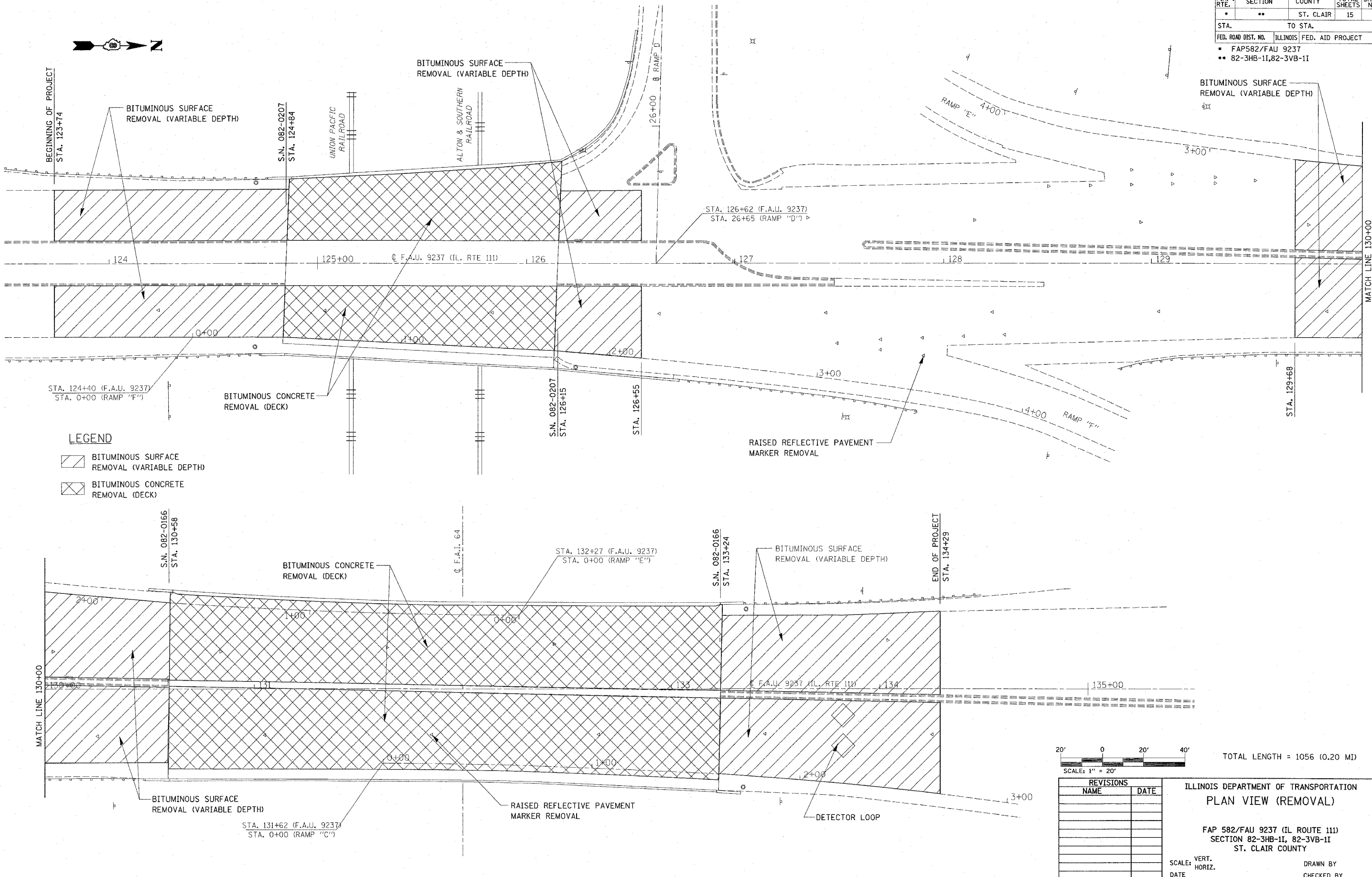
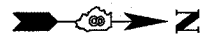
REVISIONS	
NAME	DATE

ILLINOIS DEPARTMENT OF TRANSPORTATION
 MISC. SCHEDULES

FAP 582/FAU 9237 (IL ROUTE 111)
 SECTION 82-3HB-II, 82-3VB-II
 ST. CLAIR COUNTY

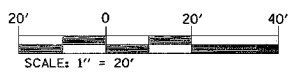
SCALE: VERT. _____
 HORIZ. _____
 DATE _____ DRAWN BY _____
 CHECKED BY _____

F.A. RTE.	SECTION	COUNTY	TOTAL SHEETS	SHEET NO.
•	••	ST. CLAIR	15	7
STA.		TO STA.		
FED. ROAD DIST. NO.	ILLINOIS	FED. AID PROJECT		
• FAP582/FAU 9237 • 82-3HB-II, 82-3VB-II				



LEGEND

	BITUMINOUS SURFACE REMOVAL (VARIABLE DEPTH)
	BITUMINOUS CONCRETE REMOVAL (DECK)



TOTAL LENGTH = 1056 (0.20 MI)

REVISIONS	
NAME	DATE

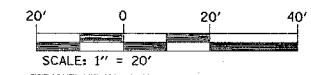
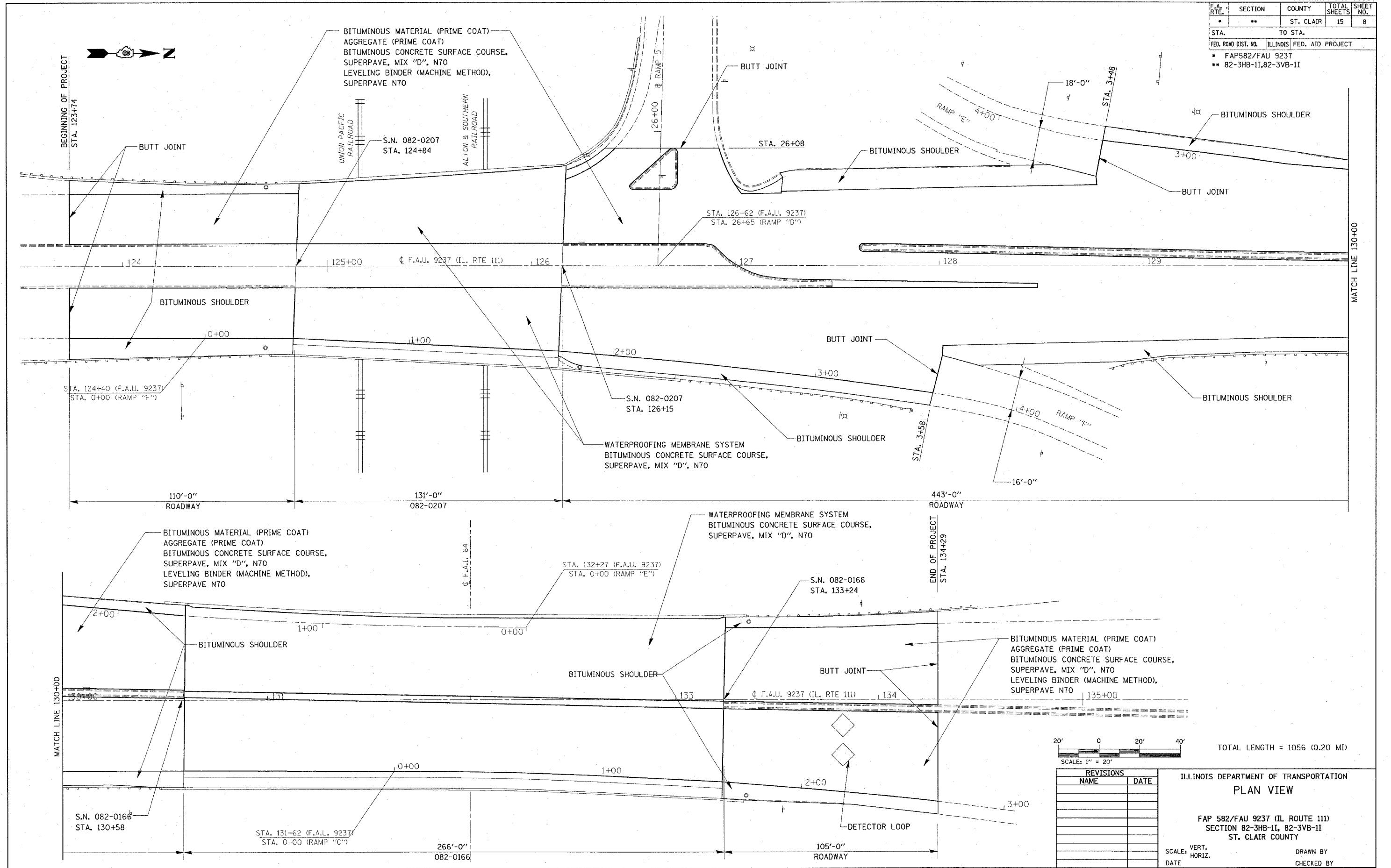
ILLINOIS DEPARTMENT OF TRANSPORTATION
PLAN VIEW (REMOVAL)
 FAP 582/FAU 9237 (IL ROUTE 111)
 SECTION 82-3HB-II, 82-3VB-II
 ST. CLAIR COUNTY

SCALE: VERT. _____
 HORIZ. _____
 DATE _____

DRAWN BY _____
 CHECKED BY _____

DATE: _____
 FILE NAME: _____
 PLOT SCALE: _____
 REFERENCE: _____

F.A. RTE.	SECTION	COUNTY	TOTAL SHEETS	SHEET NO.
•	••	ST. CLAIR	15	8
STA.		TO STA.		
FED. ROAD DIST. NO.		ILLINOIS FED. AID PROJECT		
• FAP582/FAU 9237 •• 82-3HB-II, 82-3VB-II				



TOTAL LENGTH = 1056 (0.20 MI)

REVISIONS	
NAME	DATE

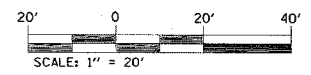
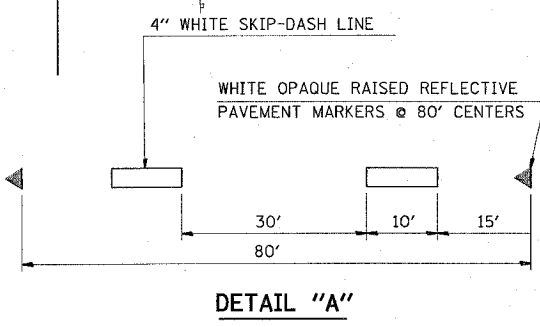
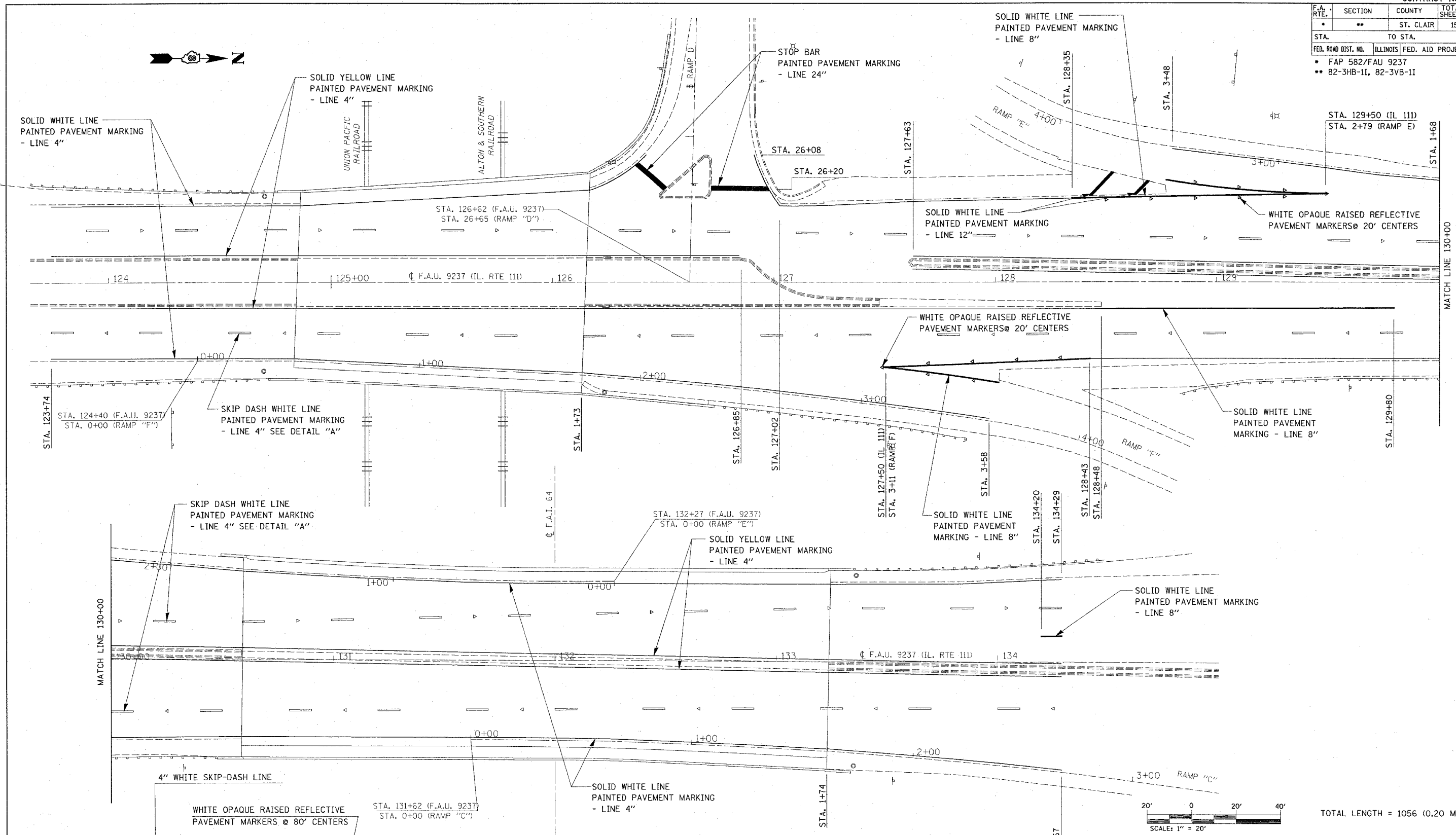
ILLINOIS DEPARTMENT OF TRANSPORTATION
PLAN VIEW

FAP 582/FAU 9237 (IL ROUTE 111)
 SECTION 82-3HB-II, 82-3VB-II
 ST. CLAIR COUNTY

SCALE: VERT. _____
 HORIZ. _____
 DATE _____ DRAWN BY _____
 CHECKED BY _____

DATE = #DATE#
 NAME = #NAME#
 SCALE = #SCALE#
 REFERENCE = #REF#

F.A. RTE.	SECTION	COUNTY	TOTAL SHEETS	SHEET NO.
..	..	ST. CLAIR	15	9
STA. TO STA.				
FED. ROAD DIST. NO. ILLINOIS FED. AID PROJECT				
• FAP 582/FAU 9237				
•• 82-3HB-II, 82-3VB-II				



TOTAL LENGTH = 1056 (0.20 MI)

REVISIONS	
NAME	DATE

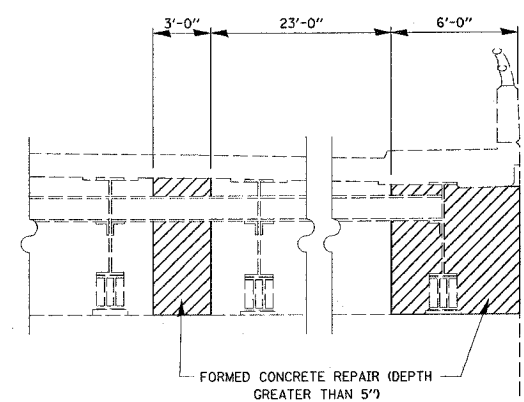
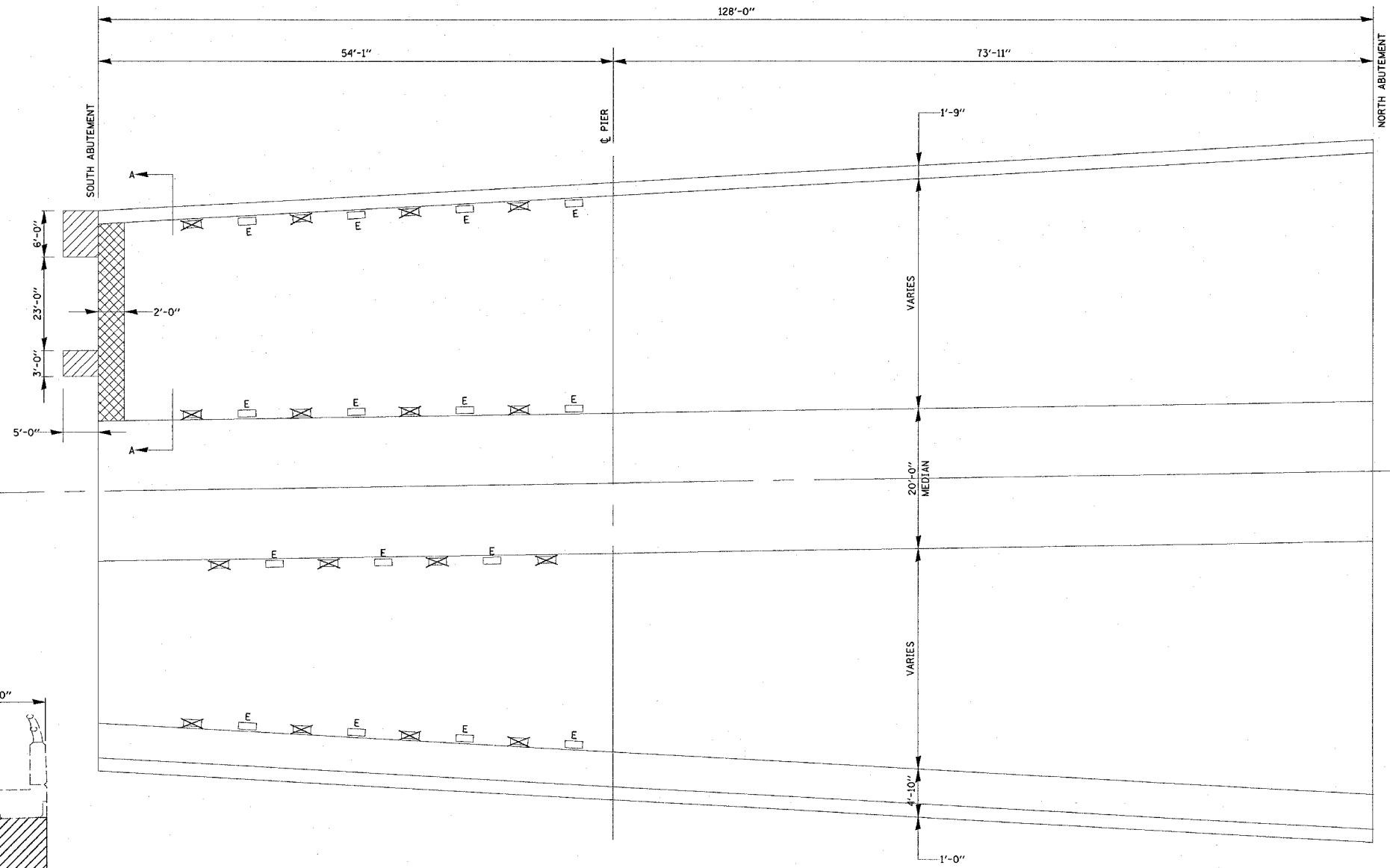
ILLINOIS DEPARTMENT OF TRANSPORTATION
PAVEMENT MARKING
 FAP 582/FAU 9237 (IL. ROUTE 111)
 SECTION 82-3HB-II, 82-3VB-II
 ST. CLAIR COUNTY

SCALE: VERT. _____
 HORIZ. _____
 DATE _____

DRAWN BY _____
 CHECKED BY _____

PLOT DATE = #DATE#
 FILE NAME = #FILE#
 PLOT SCALE = #SCALE#
 REFERENCE = #REF#

F.A. RTE.	SECTION	COUNTY	TOTAL SHEETS	SHEET NO.
•	**	ST. CLAIR	15	10
STA.		TO STA.		
FED. ROAD DIST. NO.	ILLINOIS FED. AID PROJECT			
• FAP 582/FAU 9237 •• 82-3HB-1I,82-3VB-1I				



SECTION A-A

PLAN VIEW S.N. 082-0207

- DECK CONSTRUCTION (S.N. 082-0207)**
- PROPOSED BITUMINOUS CONCRETE SURFACE REMOVAL (DECK) - 933 SQ YD
 - PROPOSED WATERPROOF MEMBRANE SYSTEM - 93 SQ YD
 - PROPOSED BITUMINOUS CONCRETE SURFACE COURSE, SUPERPAVE, MIX D, N70 1 1/2" - 78 TON
 - ✕ PLUG EXISTING DECK DRAIN - 16 EACH
 - DECK DRAIN EXTENTIONS - 15 EACH
 - ▣ DECK SLAB REPAIR (PARTIAL DEPTH) - 6.4 SQ YD
 - ▨ STRUCTURAL REPAIR (DEPTH GREATER THAN 5') - 45 SQ FT
 - SILICONE JOINT SEALER - 184 FOOT
 - POLYMER CONCRETE - 13.4 CU FT

Plan dimensions and details relative to existing structure have been taken from existing plans and are subject to nominal construction variations. It shall be the Contractor's responsibility to verify such dimensions and details in the field and make necessary approved adjustments prior to construction or ordering of materials. Such variations shall not be cause for additional compensation for a change in the scope of the work, however, the Contractor will be paid for the quantity actually furnished at the unit price bid for the work.

REVISIONS	
NAME	DATE

ILLINOIS DEPARTMENT OF TRANSPORTATION
PLAN VIEW (S.N. 082-0207)

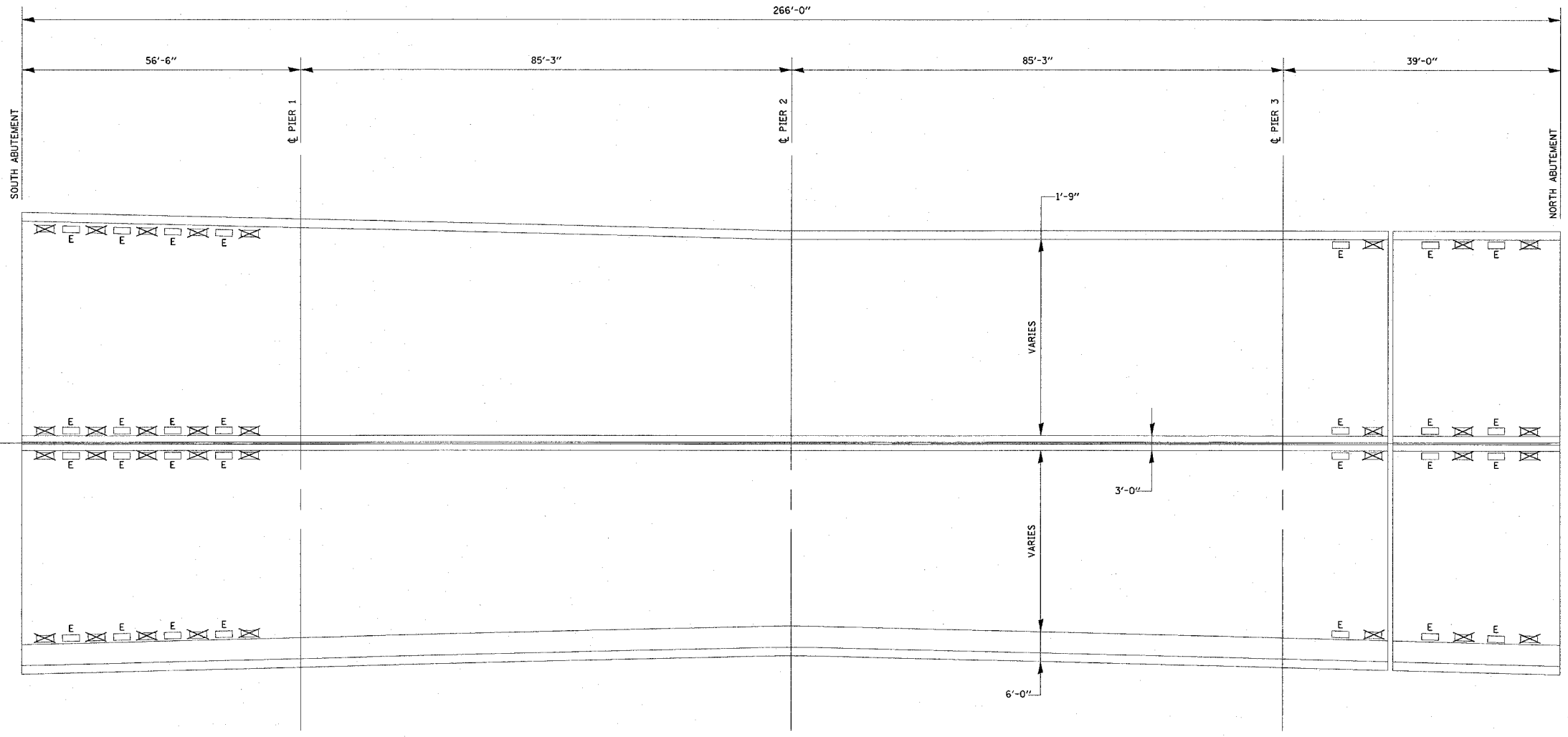
FAP 582/FAU 9237 (IL ROUTE 111)
 SECTION 82-3HB-1I, 82-3VB-1I
 ST. CLAIR COUNTY

SCALE: VERT. _____
 HORIZ. _____
 DATE _____

DRAWN BY _____
 CHECKED BY _____

PLOT DATE = #DATE#
 FILE NAME = #FILES#
 PLOT SCALE = #SCALE#
 REFERENCE = #REF#

F.A. RTE.	SECTION	COUNTY	TOTAL SHEETS	SHEET NO.
*	**	ST. CLAIR	15	11
STA.		TO STA.		
FED. ROAD DIST. NO.		ILLINOIS FED. AID PROJECT		
* FAP 582/FAU 9237 ** 82-3HB-11, 82-3VB-11				



PLAN VIEW S.N. 082-0166

- DECK CONSTRUCTION (S.N. 082-0166)**
- PROPOSED BITUMINOUS CONCRETE SURFACE REMOVAL (DECK) - 2376 SQYD
 - PROPOSED WATERPROOF MEMBRANE SYSTEM - 2376 SQYD
 - PROPOSED BITUMINOUS CONCRETE SURFACE COURSE, SUPERPAVE, MIX D, N70, 1 1/2" - 197 TON
 - PLUG EXISTING DECK DRAIN - 32 EACH
 - DECK DRAIN EXTENTIONS - 28 EACH
 - DECK SLAB REPAIR (PARTIAL DEPTH) - 0 SQYD
 - SILICONE JOINT SEALER - 182 FOOT
 - POLYMER CONCRETE - 13.3 CU FT

Plan dimensions and details relative to existing structure have been taken from existing plans and are subject to nominal construction variations. It shall be the Contractor's responsibility to verify such dimensions and details in the field and make necessary approved adjustments prior to construction or ordering of materials. Such variations shall not be cause for additional compensation for a change in the scope of the work, however, the Contractor will be paid for the quantity actually furnished at the unit price bid for the work.

REVISIONS	
NAME	DATE

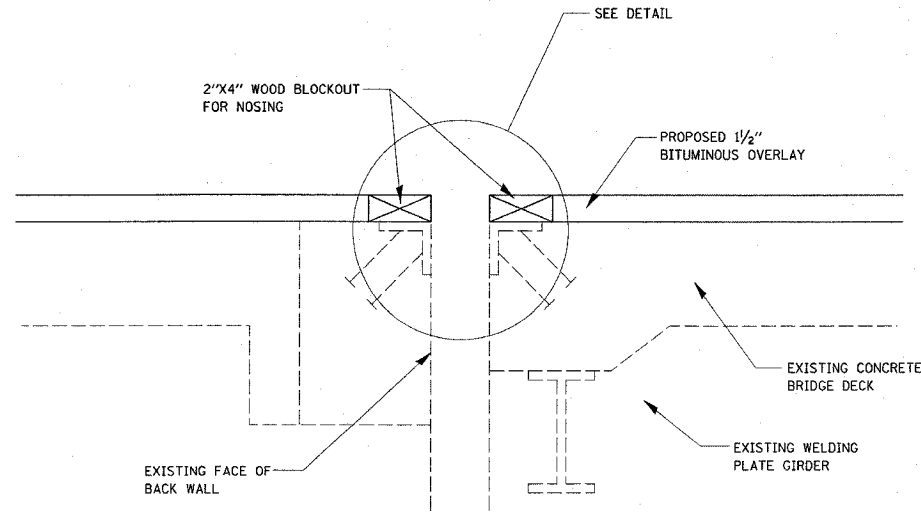
ILLINOIS DEPARTMENT OF TRANSPORTATION
 PLAN VIEW (S.N. 082-0166)

FAP 582/FAU 9237 (IL ROUTE 111)
 SECTION 82-3HB-11, 82-3VB-11
 ST. CLAIR COUNTY

SCALE: VERT. DRAWN BY
 HORIZ. CHECKED BY
 DATE

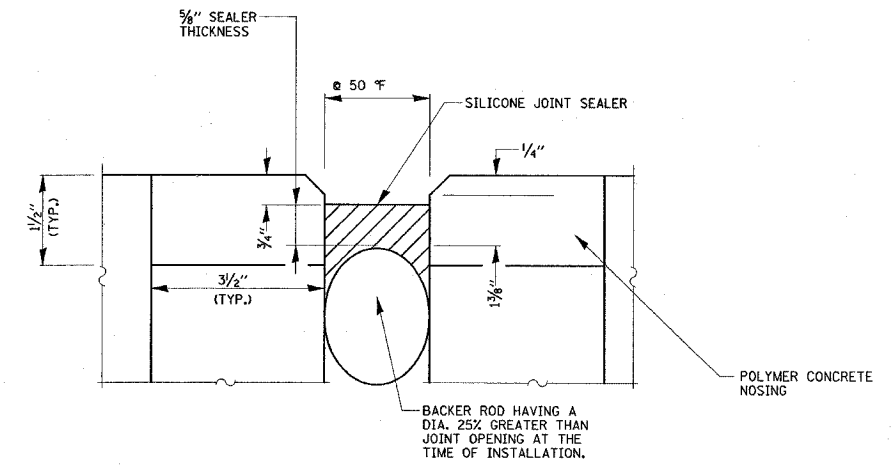
PLOT DATE * #DATE*
 FILE NAME * #FILE*
 PLOT SCALE * #SCALE*
 REFERENCE * #REF*

F.A. RTE.	SECTION	COUNTY	TOTAL SHEETS	SHEET NO.
•	••	ST. CLAIR	15	12
STA.		TO STA.		
FED. ROAD DIST. NO.		ILLINOIS FED. AID PROJECT		
• FAP 582/FAU 9237				
•• 82-3HB-II, 82-3VB-II				

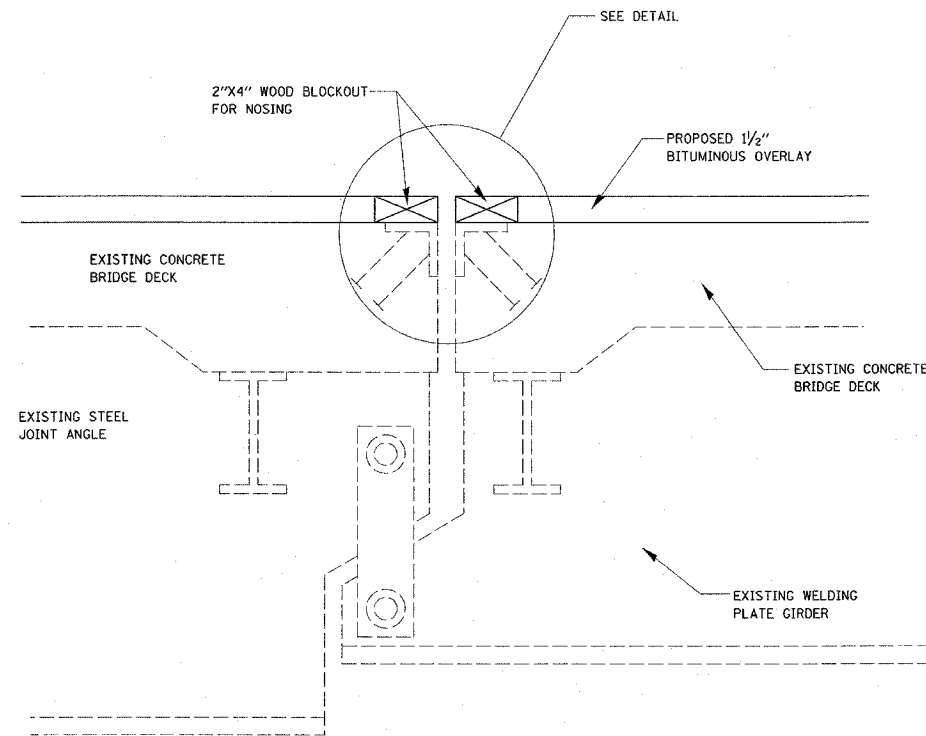


SECTION THRU ABUTMENTS S.N. 082-0207
AND S.N. 082-0166 (S. ABUT. ONLY)

NOTE:
THE SAWCUTTING AT THE LIMITS OF THE POLYMER CONCRETE EXPANSION BLOCKS SHALL BE CONSIDERED AS INCIDENTAL TO THE POLYMER CONCRETE, AND WILL NOT BE PAID FOR SEPARATELY.



SILICONE JOINT SEALER DETAIL



SECTION THRU PIN AND
LINK S.N. 082-0166

NOTE:
THE EXISTING EXPANSION JOINTS AND ANCHOR BLOCKS ARE TO BE REMOVED, WITH THE COST OF REMOVAL TO BE CONSIDERED INCLUDED IN THE COST OF BITUMINOUS CONCRETE REMOVAL (DECK).

Plan dimensions and details relative to existing structure have been taken from existing plans and are subject to nominal construction variations. It shall be the Contractor's responsibility to verify such dimensions and details in the field and make necessary approved adjustments prior to construction or ordering of materials. Such variations shall not be cause for additional compensation for a change in the scope of the work, however, the Contractor will be paid for the quantity actually furnished at the unit price bid for the work.

DATE =
DRAWN BY =
CHECKED BY =
SCALE =
REFERENCE =

REVISIONS	
NAME	DATE

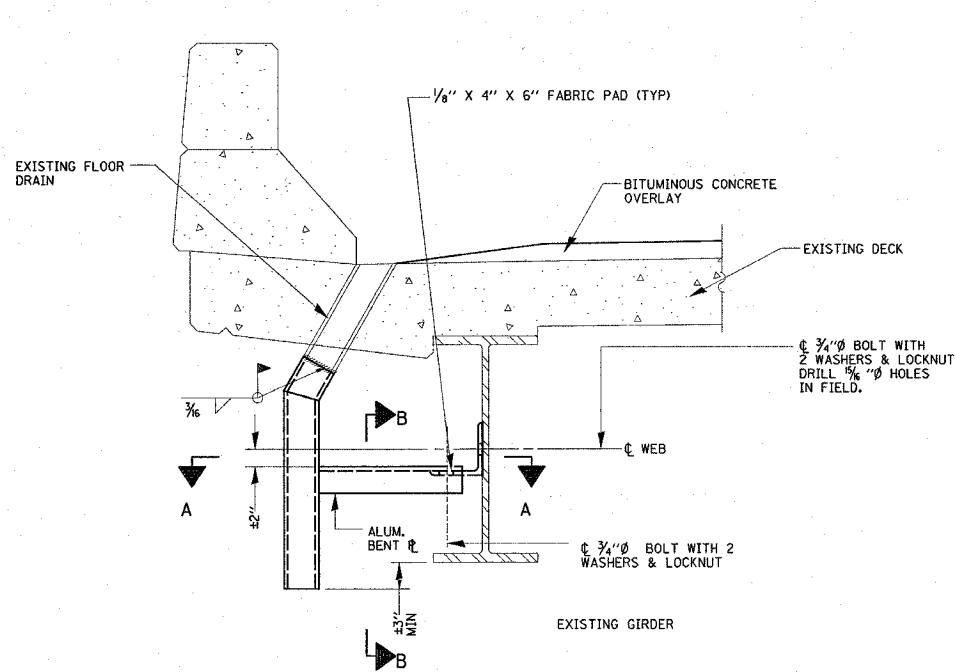
ILLINOIS DEPARTMENT OF TRANSPORTATION
MISC. DETAIL

FAP 582/FAU 9237 (IL ROUTE 111)
SECTION 82-3HB-II, 82-3VB-II
ST. CLAIR COUNTY

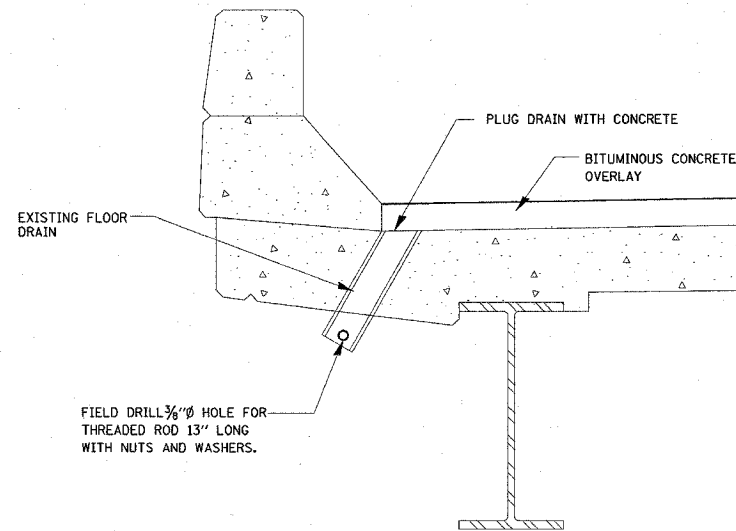
SCALE: VERT.
HORIZ.
DATE

DRAWN BY
CHECKED BY

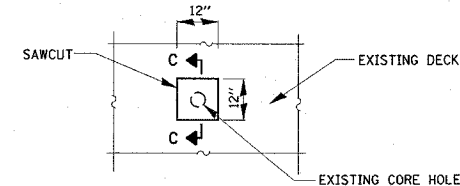
F.A. RTE.	SECTION	COUNTY	TOTAL SHEETS	SHEET NO.
•	••	ST. CLAIR	15	13
STA.		TO STA.		
FED. ROAD DIST. NO.		ILLINOIS FED. AID PROJECT		
• FAP 582/FAU 9237				
•• 82-3HB-11, 82-3VB-11				



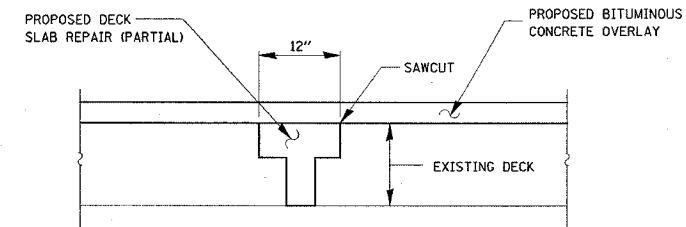
SECTION AT DRAIN
(CURB AND MEDIAN)



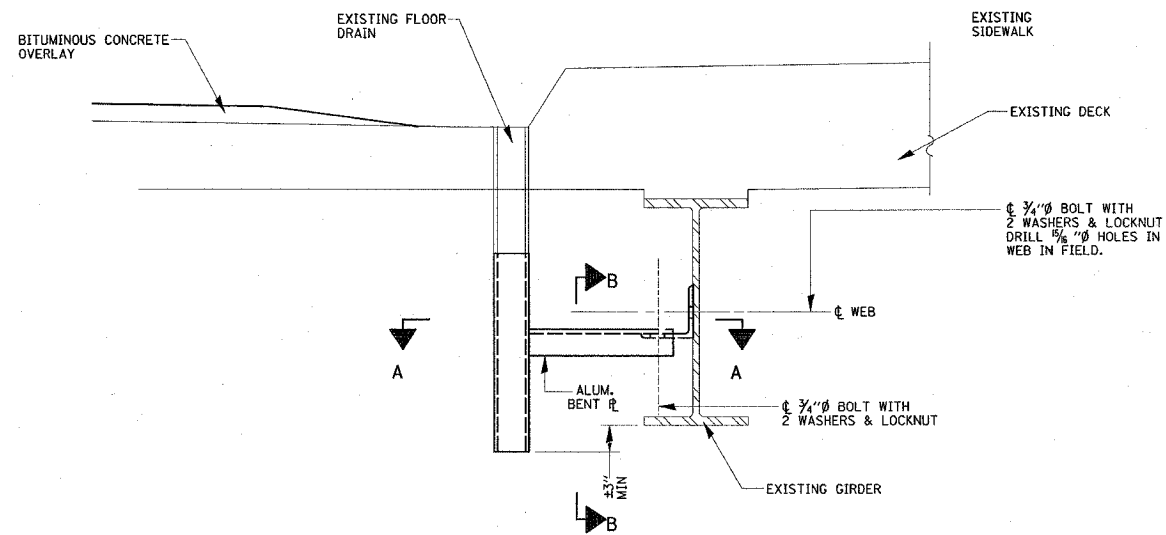
DRAIN ELIMINATION DETAIL



PLAN VIEW HOLE PATCH



SECTION C-C

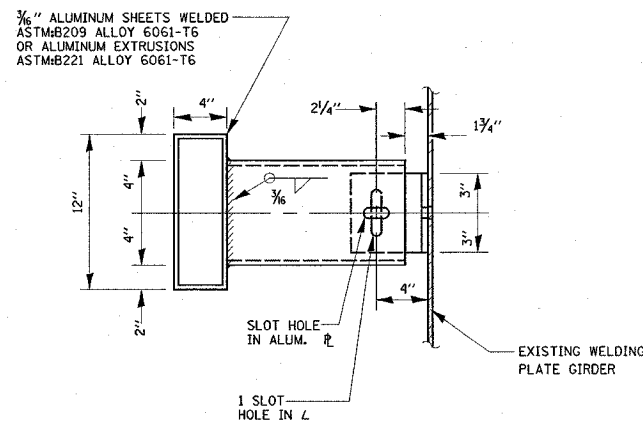


SECTION AT DRAIN (SIDEWALK)

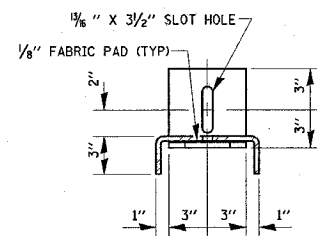
NOTES:

1. THE CORE HOLES SHALL BE PATCHED AS DESCRIBED IN THIS DETAIL.
2. THE CORE HOLES SHALL BE REPAIRED TO THE BOTTOM OF THE DECK ACCORDING TO THE SPECIFICATIONS FOR DECK SLAB REPAIR (PARTIAL).

CORE HOLE LOCATION FROM CENTERLINE	
S.N. 082-0207	
STA.	
125+13	28' LT
125+17	34' RT
125+57	16' LT
125+73	14' RT
125+87	36' LT
S.N. 082-0166	
STA.	
190+82	35' RT
190+93	13' LT
191+84	5' RT
191+88	5' LT
192+13	12' RT
193+04	38' RT



SECTION A-A



SECTION B-B

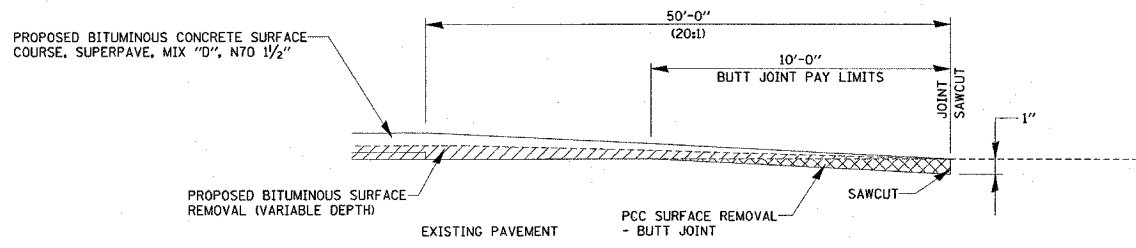
STRUCTURE	FLOOR DRAIN EXTENSIONS	PLUG EXISTING DECK DRAIN
082-0166	28	32
082-0207	15	18
TOTAL	43	48

SEE: SHEET 9 AND 10 FOR LOCATION

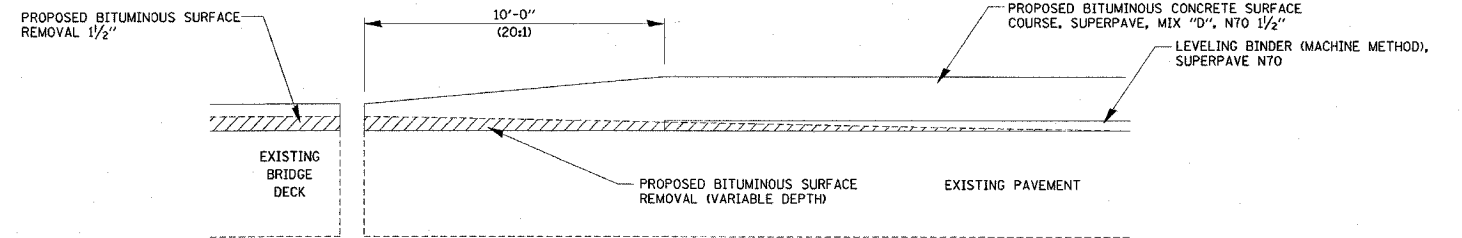
REVISIONS		ILLINOIS DEPARTMENT OF TRANSPORTATION MISC. DETAIL
NAME	DATE	
		FAP 582/FAU 9237 (IL ROUTE 111) SECTION 82-3HB-11, 82-3VB-11 ST. CLAIR COUNTY SCALE: VERT. DRAWN BY HORIZ. CHECKED BY DATE

DATE = DATE
 FILE NAME = FILE NAME
 PLOT SCALE = PLOT SCALE
 REFERENCE = REFERENCE

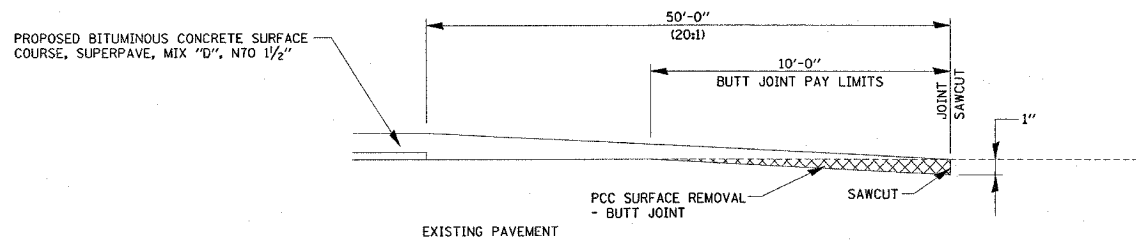
F.A. RTE.	SECTION	COUNTY	TOTAL SHEETS	SHEET NO.
•	••	ST. CLAIR	15	14
STA.		TO STA.		
FED. ROAD DIST. NO.		ILLINOIS FED. AID PROJECT		
• FAP 582/FAU 9237				
•• 82-3HB-1I, 82-3VB-1I				



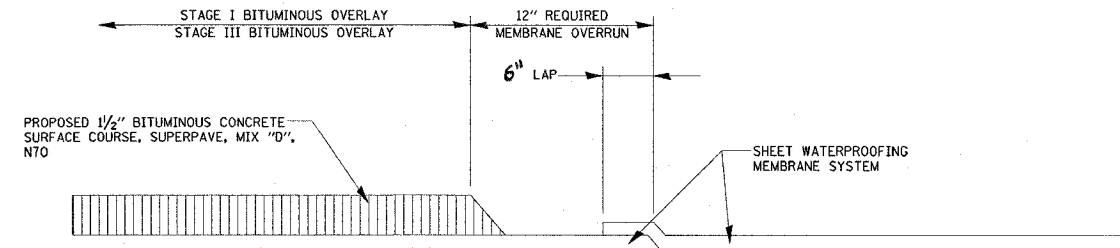
BUTT JOINT TO BE CONSTRUCTED AT
 STA. 123+74, STA. 134+29,
 AND RAMP D STA. 26+08



BUTT JOINT TO BE CONSTRUCTED AT
 STA. 124+84, STA. 126+15, STA. 130+58,
 AND STA. 133+24



BUTT JOINT TO BE CONSTRUCTED AT
 RAMP E STA. 3+48, AND RAMP F STA. 3+58



WATERPROOF MEMBRANE
 LAP DETAIL

DATE
 FILE NAME
 PLOT SCALE
 REFERENCE

REVISIONS	
NAME	DATE

ILLINOIS DEPARTMENT OF TRANSPORTATION

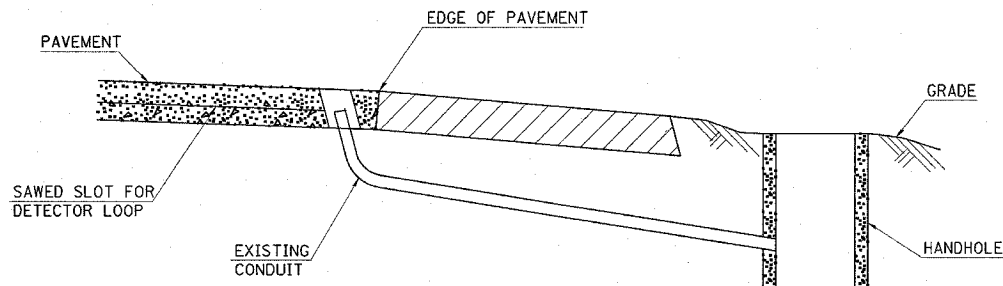
MISC. DETAIL

FAP 582/FAU 9237 (IL ROUTE 111)
 SECTION 82-3HB-1I, 82-3VB-1I
 ST. CLAIR COUNTY

SCALE: VERT.
 HORIZ.
 DATE

DRAWN BY
 CHECKED BY

F.A. RTE.	SECTION	COUNTY	TOTAL SHEETS	SHEET NO.
•	••	ST. CLAIR	15	15
STA.		TO STA.		
FED. ROAD DIST. NO.	ILLINOIS	FED. AID PROJECT		
• FAP 582/FAU 9237				
•• 82-3HB-1I, 82-3VB-1I				



DETAIL
(NO SCALE)

RE-USE EXISTING DETECTOR LOOP LEAD-IN CONDUIT

- 1 DRILL OUT PAVEMENT SEALANT AND CLEAN EXISTING CONDUIT.
- 2 REMOVE EXISTING CABLE TO HANDHOLE.
- 3 INSTALL LOOP LEAD-IN CONDUCTORS IN CONDUIT.
- 4 SPLICE NEW DETECTOR LOOP LEAD-IN CONDUCTORS TO EXISTING LEAD-IN CABLE IN HANDHOLE.
- 5 FILL HOLE WITH APPROVED SEALER. PREVENT SEALER FROM ENTERING INTO CONDUIT.

NOT A PAY ITEM. THE COST OF THIS WORK SHALL BE INCLUDED IN THE PAY ITEM "DETECTOR LOOP REPLACEMENT"

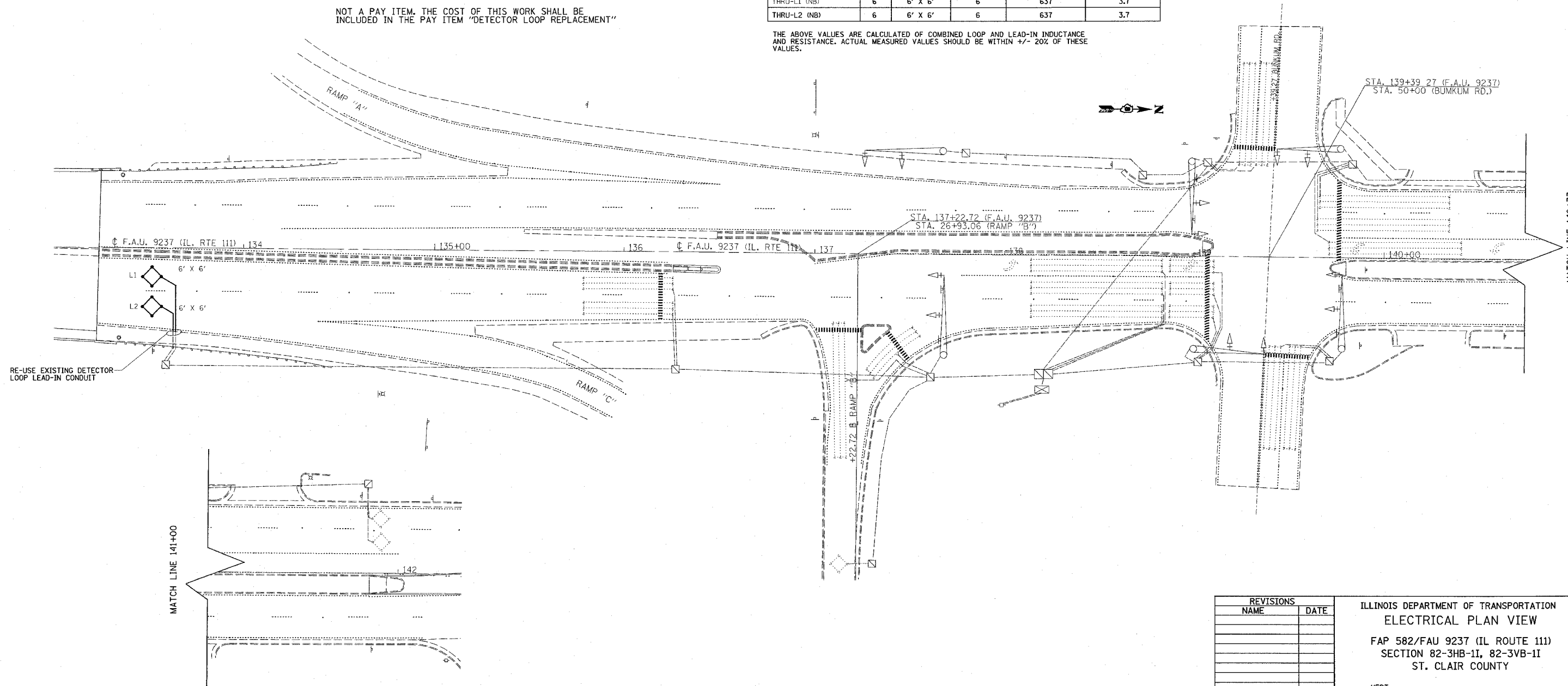
DETECTOR LOOP REQUIREMENTS AND CALCULATIONS FOR IL ROUTE 111 AND HIGHWAY 64.

LOOP	PHASE (Ø)	LOOP SIZE(FT)	REQUIRED # OF TURNS	CALCULATED INDUCTANCE MICROHENRIES (µH)	CALCULATED RESISTANCE OHMS (Ω)
THRU-L1 (NB)	6	6' X 6'	6	637	3.7
THRU-L2 (NB)	6	6' X 6'	6	637	3.7

THE ABOVE VALUES ARE CALCULATED OF COMBINED LOOP AND LEAD-IN INDUCTANCE AND RESISTANCE. ACTUAL MEASURED VALUES SHOULD BE WITHIN +/- 20% OF THESE VALUES.

NOTES

1. THE EXISTING HANDHOLES AND CONDUITS SHALL BE REUSED. IF THEY HAVE BEEN DAMAGED, THEY SHALL BE REPLACED AT THE COST OF THE CONTRACTOR WITH NO ADDITIONAL COMPENSTION AND TO THE SATISFACTION OF THE ENGINEER.
2. THE TOTAL QUANTITY OF DETECTOR LOOP REPLACEMENT AT THIS INTERSECTION IS 97 FEET. IF ADDITIONAL DETECTOR LOOPS ARE DAMAGED DURING CONSTRUCTION, THEY SHALL BE REPLACED; THEREFORE, THE ACTUAL QUANTITY MAY VARY.



PLOT DATE = #DATE#
PLOT SCALE = #SCALE#
REFERENCE = #REF#

REVISIONS	
NAME	DATE

ILLINOIS DEPARTMENT OF TRANSPORTATION
ELECTRICAL PLAN VIEW
FAP 582/FAU 9237 (IL ROUTE 111)
SECTION 82-3HB-1I, 82-3VB-1I
ST. CLAIR COUNTY

SCALE: VERT.
HORIZ.
DATE

DRAWN BY
CHECKED BY