

FAU ROUTE	SECTION	COUNTY	TOTAL SHEETS	SHEET NO.
9170	124-21	ST. CLAIR	10	9
STA. TO STA.		CONTRACT NO.: 76938		

DETAIL OF PRECAST CONCRETE BOX CULVERT SECTION

(WITH COVER 2 FEET OR GREATER)
ASTM DESIGNATION C-789)
DESIGN LOADING: HS-20-44

GENERAL NOTES

SHOP PLANS FOR THE REINFORCEMENT SHALL BE SUBMITTED IN ACCORDANCE WITH THE REQUIREMENTS OF ARTICLE 504.04(A) OF THE STANDARD SPECIFICATIONS.

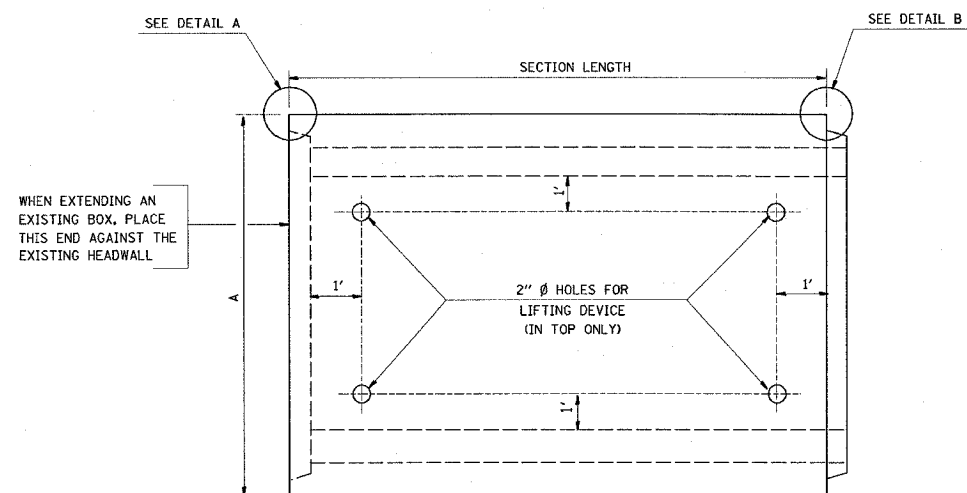
MINIMUM CONCRETE STRENGTH SHALL BE 5000 PSI AFTER 28 DAYS.

THE JOINTS OF THE PRECAST BOX SECTIONS SHALL BE SEALED WITH MASTIC IN ACCORDANCE WITH ARTICLE 755.01 OF THE STANDARD SPECIFICATIONS FOR ROAD AND BRIDGE CONSTRUCTION.

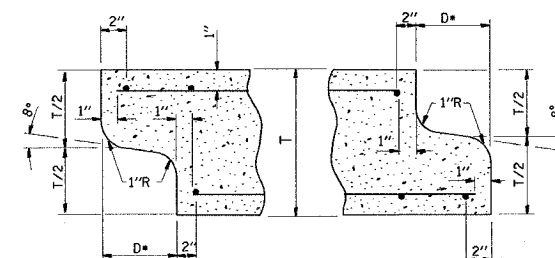
LIFTING HOLES SHALL BE FILLED WITH CONCRETE PLUGS AND MASTIC AFTER THE BOX SECTIONS ARE IN PLACE.

THE TERMS AS1, AS2, AND AS3 DENOTE THE REQUIRED STEEL AREAS FOR REINFORCEMENT AS SPECIFIED IN ASTM C 789. REINFORCEMENT SHALL BE OF WELDED WIRE FABRIC CONFORMING TO ASTM SPECIFICATIONS S 185.

DRAINAGE OPENINGS SHALL BE PROVIDED IN ACCORDANCE WITH ARTICLE 503.12 OF THE STANDARD SPECIFICATIONS. LOCATION AND SPACING OF THE OPENINGS SHALL BE SHOWN ON THE SHOP DRAWINGS.

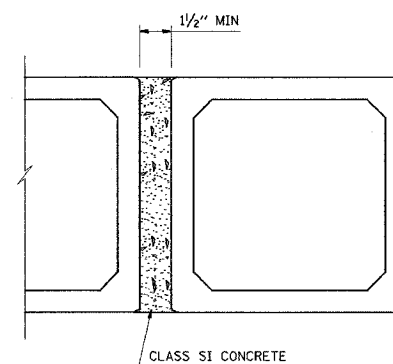


PLAN
LOCATION OF LIFTING HOLES MAY BE VARIED AS NEEDED TO CLEAR REINFORCEMENT.

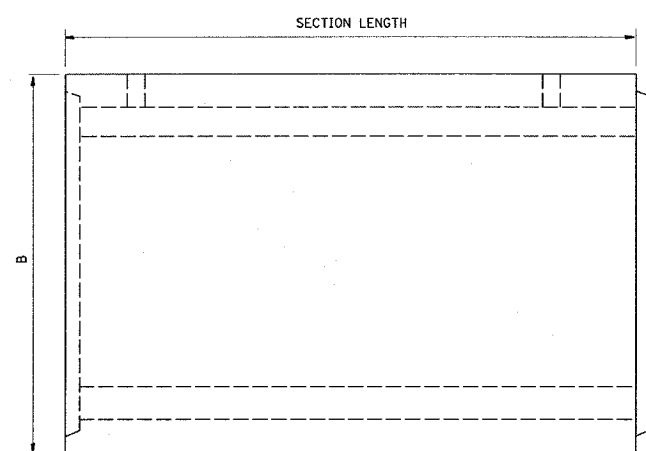


DETAIL A (TYP INLET END)
DETAIL B (TYP OUTLET END)

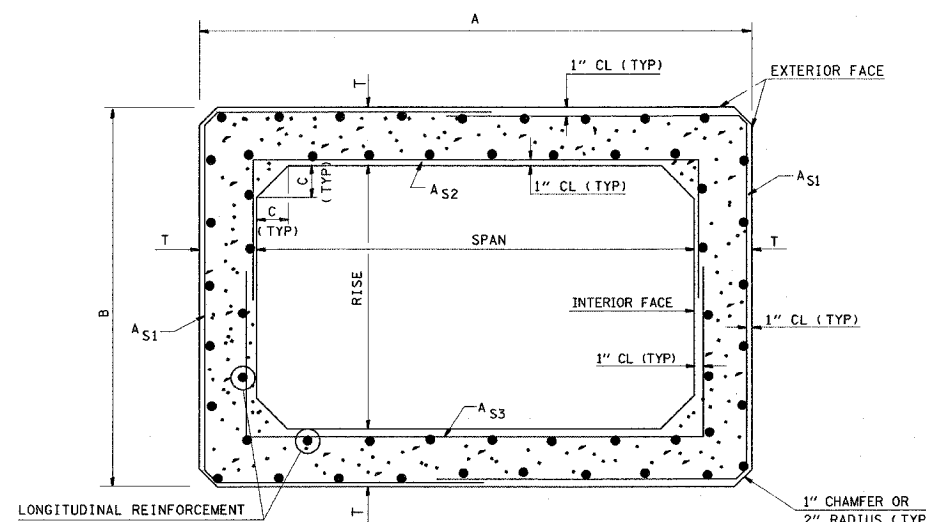
NOTE: INLET AND OUTLET ENDS SHALL BE COMPATIBLE
• THE D DIMENSION SHALL CONFORM TO THE MANUFACTURER'S STANDARDS.



MULTIPLE UNIT PLACEMENT



ELEVATION



CROSS SECTION

DIMENSIONS

SPAN X RISE	T	A	B	C	SPAN X RISE	T	A	B	C
	(INCHES)	(FT-IN)	(FT-IN)	(INCHES)		(INCHES)	(FT-IN)	(FT-IN)	(INCHES)
2' X2'	4	2-8	2-8	4	9' X5'	9	10-6	6-6	9
3' X2'	4	3-8	2-8	4	9' X6'	9	10-6	7-6	9
3' X3'	4	3-8	3-8	4	9' X7'	9	10-6	8-6	9
4' X2'	5	4-10	2-10	5	9' X8'	9	10-6	9-6	9
4' X3'	5	4-10	3-10	5	9' X9'	9	10-6	10-6	9
4' X4'	5	4-10	4-10	5					
5' X2'	6	6-0	3-0	6	10' X4'	10	11-8	5-8	10
5' X3'	6	6-0	4-0	6	10' X5'	10	11-8	6-8	10
5' X4'	6	6-0	5-0	6	10' X6'	10	11-8	7-8	10
5' X5'	6	6-0	6-0	6	10' X7'	10	11-8	8-8	10
6' X2'	7	7-2	3-2	7	10' X8'	10	11-8	9-8	10
6' X3'	7	7-2	4-2	7	10' X9'	10	11-8	10-8	10
6' X4'	7	7-2	5-2	7	10' X10'	10	11-8	11-8	10
6' X5'	7	7-2	6-2	7					
6' X6'	7	7-2	7-2	7	11' X4'	11	12-10	5-10	11
					11' X6"	11	12-10	7-10	11
					11' X8'	11	12-10	9-10	11
7' X4'	8	8-4	5-4	8	11' X10'	11	12-10	11-10	11
7' X5'	8	8-4	6-4	8	11' X11'	11	12-10	12-10	11
7' X6'	8	8-4	7-4	8					
7' X7'	8	8-4	8-4	8					
					12' X4'	12	14-0	6-0	12
8' X4'	8	9-4	5-4	8	12' X6'	12	14-0	8-0	12
8' X5'	8	9-4	6-4	8	12' X8'	12	14-0	10-0	12
8' X6'	8	9-4	7-4	8	12' X10'	12	14-0	12-0	12
8' X7'	8	9-4	8-4	8	12' X12'	12	14-0	14-0	12
8' X8'	8	9-4	9-4	8					

REVISIONS	
NAME	DATE

ILLINOIS DEPARTMENT OF TRANSPORTATION
**PRECAST CONCRETE
BOX CULVERT
SN 082-2567**

FAU ROUTE 9170
SECTION 124-21
ST. CLAIR COUNTY

DRAWN BY:

PLOT DATE: 3/13/2006

DATE	
BY	
DESIGNED	
CHECKED	
IN CHARGE	
NO.	
PLAN	
NOTE BOOK	
ALLOTTED	
FILE NO.	
ADD. FILE NAME	