

76942

F.A.P. RTE.	SECTION	COUNTY	TOTAL SHEETS	SHEET NO.
304	6RS-2	JERSEY	12	1

STATE OF ILLINOIS
DEPARTMENT OF TRANSPORTATION
DIVISION OF HIGHWAYS

**PROPOSED
HIGHWAY PLANS**

FAP ROUTE 304 (IL 16 /IL 100)
SECTION 6RS-2
~~PROJECT F 304 ()~~
RESURFACING
JERSEY COUNTY
C-98-106-05

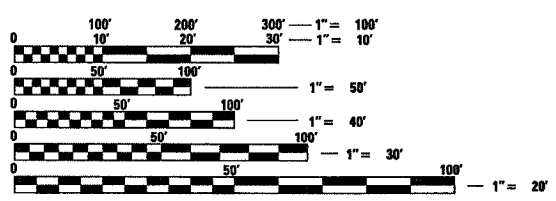
FOR INDEX OF SHEETS, SEE SHEET NO. 2

D-98-085-05



PROJECT ENGINEER: PATTI LEBEAU (618) 346-3179
SQUAD LEADER: CHERYL KEPLAR (618) 346-3186

MICROFILMED _____
REEL NUMBER _____
AWARDED _____
RESIDENT ENGINEER _____
AS BUILT CHANGES WERE MADE
ON THE FOLLOWING SHEETS



FULL SIZE PLANS HAVE BEEN PREPARED USING STANDARD
ENGINEERING SCALES. REDUCED SIZED PLANS WILL NOT
CONFORM TO STANDARD SCALES. IN MAKING MEASUREMENTS
ON REDUCED PLANS, THE ABOVE SCALES MAY BE USED.

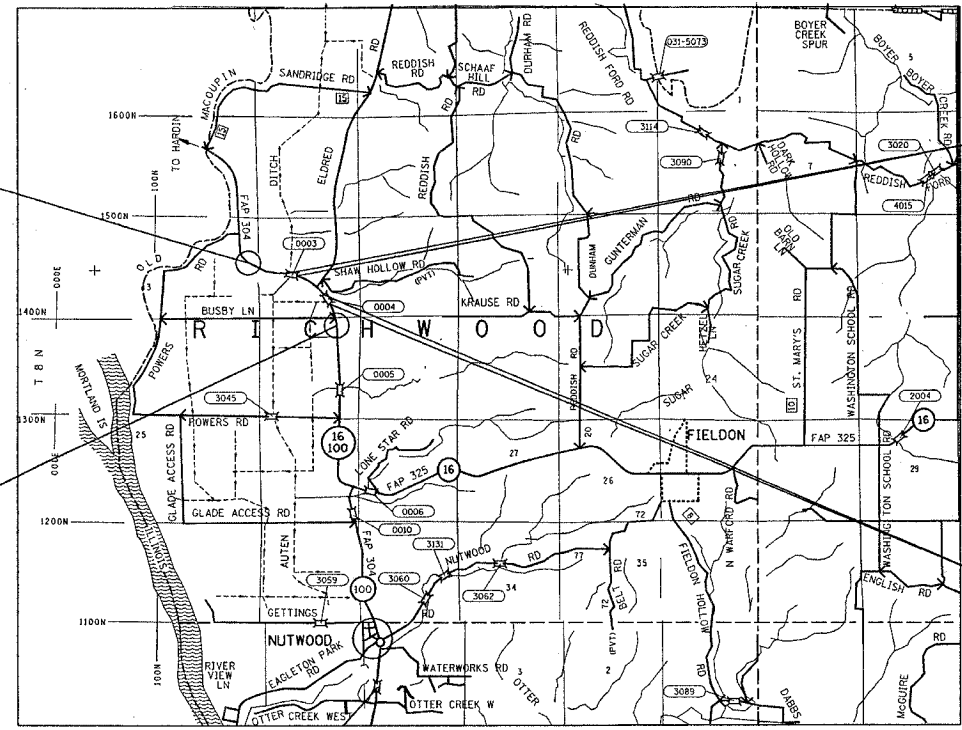
J.U.L.I.E.
JOINT UTILITY LOCATION INFORMATION FOR EXCAVATION
1-800-892-0123

CONTRACT NO. 76942

2003 ADT: 2750
2025 ADT: 3400
SU: 4.0%
MU: 3.3%

END PROJECT:
STA. 796 + 00
LAT: 39.13049
LONG: -90.56333

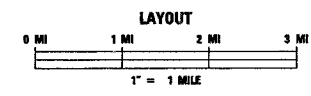
BEGIN PROJECT:
STA. 742 + 66
LAT: 39.13779
LONG: -90.57591



BRIDGE OMISSION:
S.N. 042-0003
STA. 781 + 82.26 TO
STA. 783 + 45.22
(163 FT)



BRIDGE OMISSION:
S.N. 042-0004
STA. 756 + 54.25 TO
STA. 757 + 42.07
(87.8 FT)



FUNCTIONAL CLASSIFICATION:
OTHER PRINCIPAL ARTERIAL
GROSS LENGTH: 0.92 MILES (5334 FT)
BRIDGE OMISSION: 0.04 MILES (250.8 FT)
NET LENGTH: 0.87 MILES (5083.295 FT)

STATE OF ILLINOIS
DEPARTMENT OF TRANSPORTATION
DIVISION OF HIGHWAYS

SUBMITTED March 28, 2006
May C. Farnum
DEPUTY DIRECTOR OF HIGHWAYS
REGION FIVE ENGINEER

May 12, 2006
Mike Hine
ENGINEER OF DESIGN AND ENVIRONMENT

May 12, 2006
Milton R. Sus, P.E.
DIRECTOR, DIVISION OF HIGHWAYS

**PRINTED BY THE AUTHORITY
OF THE STATE OF ILLINOIS**