

76942

F.A.P. RTE.	SECTION	COUNTY	TOTAL SHEETS	SHEET NO.
304	6RS-2	JERSEY	12	1

STATE OF ILLINOIS
DEPARTMENT OF TRANSPORTATION
DIVISION OF HIGHWAYS

**PROPOSED
HIGHWAY PLANS**

FAP ROUTE 304 (IL 16 /IL 100)
SECTION 6RS-2
~~PROJECT F 304 ()~~
RESURFACING
JERSEY COUNTY
C-98-106-05

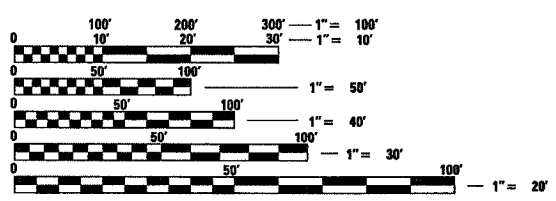
FOR INDEX OF SHEETS, SEE SHEET NO. 2

D-98-085-05



PROJECT ENGINEER: PATTI LEBEAU (618) 346-3179
SQUAD LEADER: CHERYL KEPLAR (618) 346-3186

MICROFILMED _____
REEL NUMBER _____
AWARDED _____
RESIDENT ENGINEER _____
AS BUILT CHANGES WERE MADE
ON THE FOLLOWING SHEETS



FULL SIZE PLANS HAVE BEEN PREPARED USING STANDARD ENGINEERING SCALES. REDUCED SIZED PLANS WILL NOT CONFORM TO STANDARD SCALES. IN MAKING MEASUREMENTS ON REDUCED PLANS, THE ABOVE SCALES MAY BE USED.

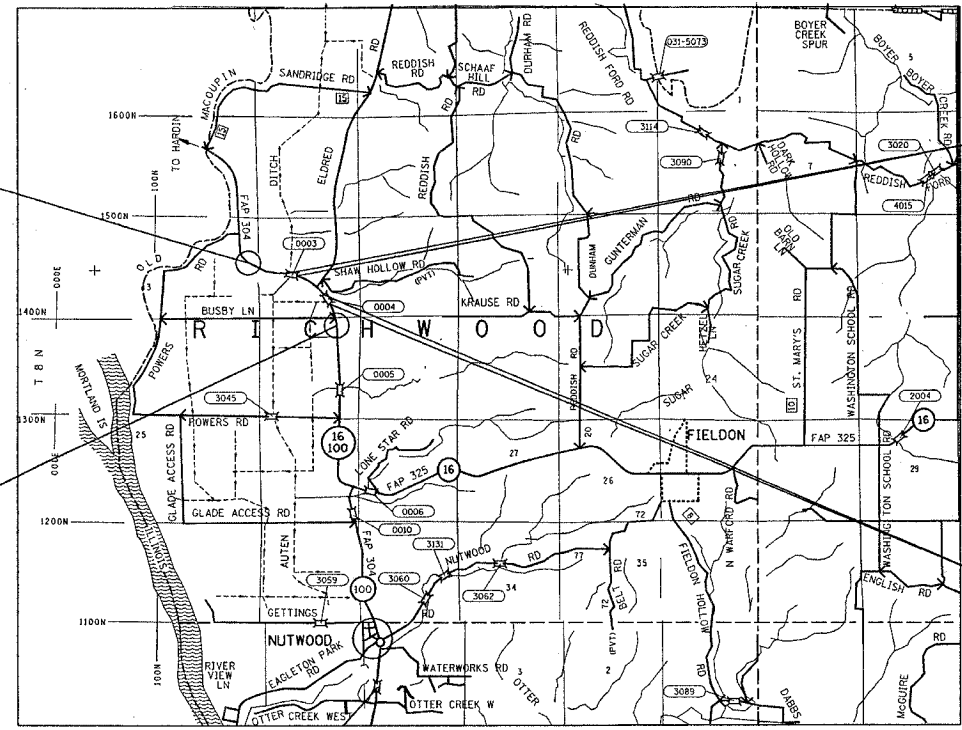
J.U.L.I.E.
JOINT UTILITY LOCATION INFORMATION FOR EXCAVATION
1-800-892-0123

CONTRACT NO. 76942

2003 ADT: 2750
2025 ADT: 3400
SU: 4.0%
MU: 3.3%

END PROJECT:
STA. 796 + 00
LAT: 39.13049
LONG: -90.56333

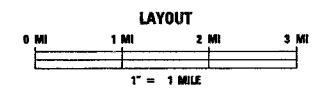
BEGIN PROJECT:
STA. 742 + 66
LAT: 39.13779
LONG: -90.57591



BRIDGE OMISSION:
S.N. 042-0003
STA. 781 + 82.26 TO
STA. 783 + 45.22
(163 FT)



BRIDGE OMISSION:
S.N. 042-0004
STA. 756 + 54.25 TO
STA. 757 + 42.07
(87.8 FT)



FUNCTIONAL CLASSIFICATION:
OTHER PRINCIPAL ARTERIAL
GROSS LENGTH: 0.92 MILES (5334 FT)
BRIDGE OMISSION: 0.04 MILES (250.8 FT)
NET LENGTH: 0.87 MILES (5083.295 FT)

STATE OF ILLINOIS
DEPARTMENT OF TRANSPORTATION
DIVISION OF HIGHWAYS

SUBMITTED March 28, 2006
May C. Farnum
DEPUTY DIRECTOR OF HIGHWAYS
REGION FIVE ENGINEER

May 12, 2006
Mike Hine
ENGINEER OF DESIGN AND ENVIRONMENT

May 12, 2006
Milton R. Sus, P.E.
DIRECTOR, DIVISION OF HIGHWAYS

**PRINTED BY THE AUTHORITY
OF THE STATE OF ILLINOIS**

FAP ROUTE	SECTION	COUNTY	TOTAL SHEETS	SHEET NO
304	GRS-2	JERSEY	12	2
STA. _____		TO STA. _____		
CONTRACT NUMBER: 76942				

GENERAL NOTES

THE STANDARDS AND REVISIONS NUMBERS LISTED APPLY TO THIS PROJECT.

IF ANY SECTION OR SUB-SECTION MONUMENTS ARE ENCOUNTERED, THE ENGINEER SHALL BE NOTIFIED BEFORE SUCH MONUMENTS ARE REMOVED OR RESURFACED OVER. THE CONTRACTOR SHALL PROTECT AND CAREFULLY PRESERVE ALL PROPERTY MARKERS AND MONUMENTS UNTIL THE OWNER, AN AUTHORIZED SURVEYOR, OR AGENT HAS WITNESSED OR OTHERWISE REFERENCED THEIR LOCATION.

THE THICKNESS OF BITUMINOUS MIXTURES SHOWN IN THE PLANS IS THE NOMINAL THICKNESS. DEVIATIONS FROM THE NOMINAL THICKNESS WILL BE PERMITTED WHEN SUCH DEVIATIONS OCCUR DUE TO IRREGULARITIES IN THE EXISTING SURFACE ON WHICH THE BITUMINOUS MIXTURE IS PLACED.

THE FOLLOWING MIXTURE REQUIREMENTS ARE APPLICABLE FOR THIS PROJECT.

MIXTURE USE:	SURFACE	LEVEL BINDER	BINDER/FULL DEPTH PATCH	INCIDENTAL SURF	PARTIAL DEPTH PATCH	SHOULDERS	TOP LIFT SHOULDERS
AC/PG:	PG 64-22	Pg 64-22	PG 64-22	PG 64-22	PG 64-22	PG 58-22	PG 58-22
RAP % (MAX):	10%	10%	15%	10%	10%	30%	30%
DESIGN AIR VOIDS:	4.0% @ Ndes=70	4.0% @ Ndes=70	4.0% @ Ndes=70	4.0% @ Ndes=70	4.0% @ Ndes=70	2.0% @ Ndes=30	**2.0% @ Ndes=30
MIX COMPOSITION:							
FRICITION AGG:	MIXTURE "C"	MIXTURE "C"	MIXTURE "B"	MIXTURE "C"	MIXTURE "C"	BAM	BAM

**TOP LIFT SHOULDERS - DESIGN THIS MIX AT 2.0% VOIDS AND ADD ASPHALT TO REDUCE VOIDS TO 1.5%.

THE CONTRACTOR SHALL VERIFY ALL DIMENSIONS AND CONDITIONS IN THE FIELD PRIOR TO CONSTRUCTION AND ORDERING OF MATERIALS.

NO OVERNIGHT LANE CLOSURES WILL BE ALLOWED.

ILLINOIS STATE LAW REQUIRES A 48-HOUR NOTICE TO BE GIVEN TO UTILITIES BEFORE DIGGING. FIELD MARKING OF FACILITIES MAY BE OBTAINED BY CONTACTING J.U.L.I.E. OR FOR NON-MEMBERS, THE UTILITY COMPANY DIRECTLY. AGENCIES KNOWN TO HAVE FACILITIES WITHIN THE PROJECT AREA ARE AS FOLLOWS.

UTILITY	ABOVE GROUND	BELOW GROUND
* FRONTIER COMMUNICATIONS COMPANY		X

MEMBERS OF J.U.L.I.E. (800)-892-0123 ARE INDICATED BY *. NON J.U.L.I.E. MEMBERS MUST BE NOTIFIED INDIVIDUALLY.

"ROAD CONSTRUCTION AHEAD" SIGNS SHALL BE PLACED AT ENTRANCES AND SIDE STREETS WHERE WORK IS BEING CONDUCTED AS DIRECTED BY THE RESIDENT ENGINEER. ALL CONSTRUCTION SIGNS SHALL BE FLORASCENT ORANGE. THIS WORK SHALL BE INCLUDED IN THE COST OF THE TRAFFIC CONTROL AND PROTECTION.

SHORT-TERM PAVEMENT MARKINGS SHALL BE APPLIED TO THE BINDER, PRIMED, AND FINAL BITUMINOUS SURFACE. A QUANTITY FOR TEMPORARY PAVEMENT MARKING EQUAL TO THE AMOUNT OF PERMANENT PAVEMENT MARKING HAS BEEN ADDED TO THE PLANS.

ALL TEMPORARY PAVEMENT MARKING WILL BE PLACED IN SUCH A MANNER SO AS NOT TO INTERFERE WITH THE PLACEMENT OF PERMANENT PAVEMENT MARKINGS.

THE CONTRACTOR AND THE ENGINEER SHALL BE AWARE THAT NO SURVEY WAS PERFORMED FOR THIS PROJECT. THE STATIONING AND TOPO SHOWN IN THE PLANS WAS CREATED USING MICROFILM AND FIELD MEASUREMENTS MADE BY DESIGN PERSONNEL. BOTH SHALL BE ASSUMED TO BE APPROXIMATE.

FLAGMEN SHALL BE PRESENT DURING ALL CLOSURE HOURS, INCLUDING LUNCH HOUR, AND NO ADDITIONAL COMPENSATION SHALL BE APPLIED.

INDEX OF SHEETS

1. COVER SHEET
2. INDEX OF SHEETS, HIGHWAY STANDARDS, MIXTURE REQUIREMENTS, GENERAL NOTES, AND COMMITMENTS
3. SUMMARY OF QUANTITIES
4. EXISTING TYPICAL SECTION
5. PROPOSED TYPICAL SECTION
- 6.-7. SCHEDULES OF QUANTITIES
8. LOCATION MAP
- 9.-10. INTERSECTION DETAILS
11. BUTT JOINT DETAILS
12. PAVEMENT MARKING DETAILS

LIST OF STANDARDS

000001-04	701011-01
001006	701301-02
001001	701306-01
353001-02	701311-02
442201-01	701326-02
606001-02	701336-04
606301-02	702001-06
701001-01	780001-01
701006-02	781001-02

COMMITMENT

NONE

REVISIONS	
NAME	DATE

ILLINOIS DEPARTMENT OF TRANSPORTATION
**GENERAL NOTES, STANDARDS
INDEX OF SHEETS, COMMITMENT**
FAP ROUTE 304 (IL 16/IL 100)
SECTION GRS-2
JERSEY COUNTY

DRAWN BY:

PLOT DATE: 3/29/2006

DATE	BY	REVISIONS

REVISIONS
DATE
BY
DRAWN BY
PLOT DATE

SUMMARY OF QUANTITIES

FAP ROUTE	SECTION	COUNTY	TOTAL SHEETS	SHEET NO
304	GRS-2	JERSEY	12	3
STA.	TO STA.			
CONTRACT NUMBER: 76942				

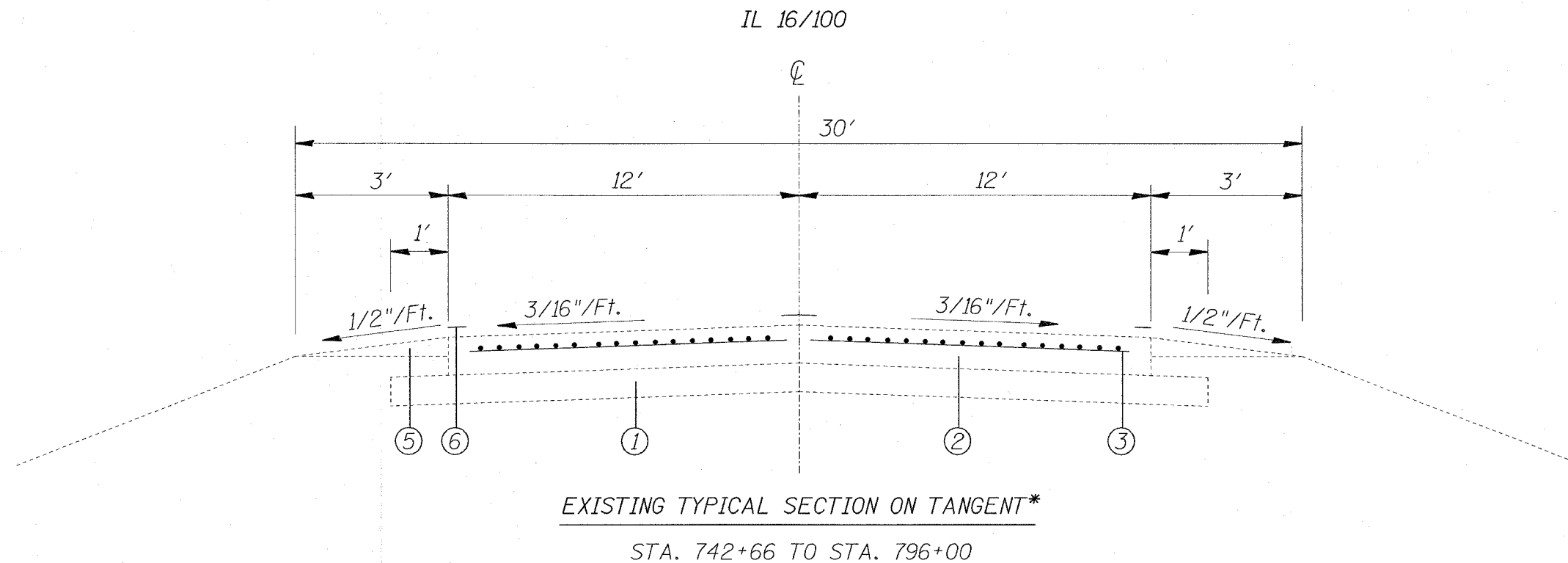
SUMMARY OF QUANTITIES			CONSTRUCTION TYPE CODE			
CODE NO	ITEM	UNIT	TOTAL QUANTITIES	1000 RURAL 100% STATE	-----	-----
20200100	EARTH EXCAVATION	CU YD	90	90		
35300500	PORTLAND CEMENT CONCRETE BASE COURSE 10"	SQ YD	51	51		
40600200	BITUMINOUS MATERIALS (PRIME COAT)	TON	9.4	9.4		
40600300	AGGREGATE (PRIME COAT)	TON	45	45		
40600980	BITUMINOUS SURFACE REMOVAL - BUTT JOINT	SQ YD	439	439		
40600985	PORTLAND CEMENT CONCRETE SURFACE REMOVAL - BUTT JOINT	SQ YD	533	533		
40600990	TEMPORARY RAMP	SQ YD	98	98		
44000500	COMBINATION CURB AND GUTTER REMOVAL	FOOT	126	126		
44003510	MEDIAN REMOVAL PARTIAL DEPTH	SQ FT	173	173		
44003800	MEDIAN SURFACE REMOVAL	SQ FT	776	776		
44201765	CLASS D PATCHES, TYPE II, 10 INCH	SQ YD	61	61		
44213200	SAW CUTS	FOOT	336	336		
48101200	AGGREGATE SHOULDERS, TYPE B	TON	331	331		
48202000	BITUMINOUS SHOULDERS SUPERPAVE	TON	41	41		
50800105	REINFORCEMENT BARS	POUND	500	500		
60605600	COMBINATION CONCRETE CURB AND GUTTER, TYPE B-9.06	FOOT	51	51		
60618300	CONCRETE MEDIAN SURFACE, 4 INCH	SQ FT	310	310		
60620400	CONCRETE MEDIAN, TYPE SB-9.06	SQ FT	79	79		
67000400	ENGINEER'S FIELD OFFICE, TYPE A	CAL MO	2	2		
67100100	MOBILIZATION	L SUM	1	1		
70100460	TRAFFIC CONTROL AND PROTECTION, STANDARD 701306	L SUM	1	1		
70100500	TRAFFIC CONTROL AND PROTECTION, STANDARD 701326	L SUM	1	1		
70100600	TRAFFIC CONTROL AND PROTECTION, STANDARD 701336	L SUM	1	1		

SUMMARY OF QUANTITIES			CONSTRUCTION TYPE CODE			
CODE NO	ITEM	UNIT	TOTAL QUANTITIES	1000 RURAL 100% STATE	-----	-----
70103810	TRAFFIC CONTROL SURVEILLANCE AND MAINTENANCE	CAL DA	5	5		
70300100	SHORT-TERM PAVEMENT MARKING	FOOT	924	924		
70300220	TEMPORARY PAVEMENT MARKING - LINE 4"	FOOT	11910	11910		
70300250	TEMPORARY PAVEMENT MARKING - LINE 8"	FOOT	72	72		
70301000	WORK ZONE PAVEMENT MARKING REMOVAL	SQ FT	154	154		
* 72000100	SIGN PANEL - TYPE 1	SQ FT	5	5		
* 72800100	TELESCOPING STEEL SIGN SUPPORT	FOOT	7	7		
* 73100100	BASE FOR TELESCOPING STEEL SIGN SUPPORT	EACH	1	1		
* 78001110	PAINT PAVEMENT MARKING - LINE 4"	FOOT	11910	11910		
* 78001140	PAINT PAVEMENT MARKING - LINE 8"	FOOT	72	72		
* 78100100	RAISED REFLECTIVE PAVEMENT MARKER	EACH	64	64		
* 78200300	PRISMATIC CURB REFLECTOR	EACH	18	18		
78300200	RAISED REFLECTIVE PAVEMENT MARKER REMOVAL	EACH	64	64		
X4066416	BITUMINOUS CONCRETE SURFACE COURSE, SUPERPAVE, MIX "C", N70	TON	1320	1320		
X4066616	BITUMINOUS CONCRETE BINDER COURSE, SUPERPAVE, IL-19.0, N70	TON	185	185		
X4066770	LEVELING BINDER (MACHINE METHOD), SUPERPAVE N70	TON	820	820		
40800040	INCIDENTAL BITUMINOUS SURFACING,	TON	12	12		
X4421000	PARTIAL DEPTH PATCHING	TON	47	47		
X4422030	PARTIAL DEPTH REMOVAL 3"	SQ YD	281	281		
* X7800100	PAINT PAVEMENT MARKING - RAISED MEDIAN	SQ FT	53	53		
* Z0036200	PAINT CURB	FOOT	96	96		

PLOT DATE = 3/29/2006
 PLOT SCALE = 60,000 / IN
 REFERENCE = REF#

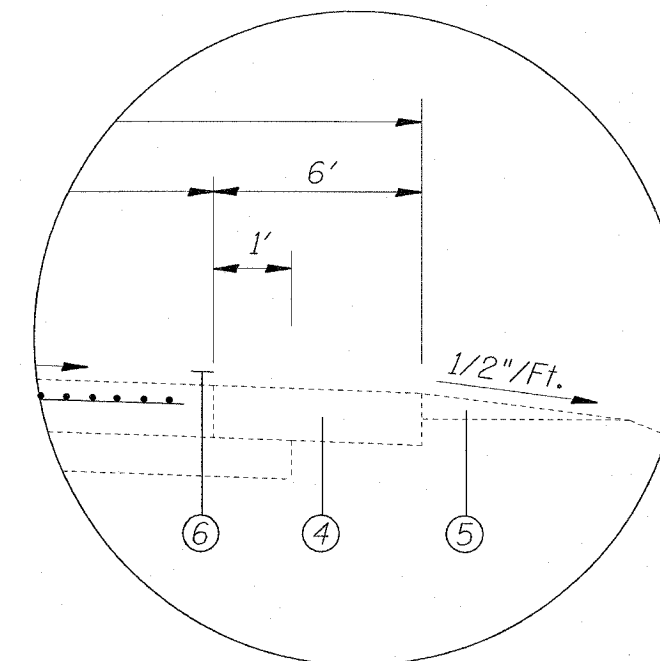
* SPECIALTY ITEMS

FAP ROUTE	SECTION	COUNTY	TOTAL SHEETS	SHEET NO
304	6RS-2	JERSEY	12	4
STA.		TO STA.		
CONTRACT NUMBER: 76942				



SEE DETAIL A FOR EXISTING SHOULDER TREATMENT
AT THE FOLLOWING STATIONS

- STA. 754+29.1 RT TO STA. 759+63.6 RT
- STA. 754+97.0 LT TO STA. 758+96.6 LT
- STA. 779+56.80 RT TO STA. 786+46.9 RT
- STA. 780+13.37 LT TO STA. 785+13.31 LT



- ① EXISTING SUB-BASE GRANULAR MATERIAL TYPE A, 6"
- ② EXISTING PCC PAVEMENT 10"
- ③ EXISTING PAVEMENT FABRIC
- ④ EXISTING BITUMINOUS SHOULDER 9"
- ⑤ EXISTING AGGREGATE WEDGE
- ⑥ EXISTING PAVEMENT MARKING
- ⑦ PROPOSED BITUMINOUS MATERIAL PRIME COAT
- ⑧ PROPOSED AGGREGATE PRIME COAT
- ⑨ PROPOSED BITUMINOUS CONCRETE BINDER COURSE SUPERPAVE, IL-19.0 N70, 3.5"
- ⑩ PROPOSED LEVEL BINDER (MACHINE METHOD) SUPERPAVE, N70, 1"
- ⑪ PROPOSED BITUMINOUS CONCRETE SURFACE COURSE SUPERPAVE, MIX "C", N70, 1 1/2"
- ⑫ PROPOSED AGGREGATE SHOULDERS, TYPE B
- ⑬ PROPOSED THERMOPLASTIC PAVEMENT MARKINGS
- ⑭ PROPOSED BITUMINOUS SHOULDERS, SUPERPAVE

PLOT DATE = 9/19/2005
 FILE NAME = C:\p\proj\11111111\11111111.dgn
 PLOT SCALE = 50.0000 / IN.
 REFERENCE = #REF#

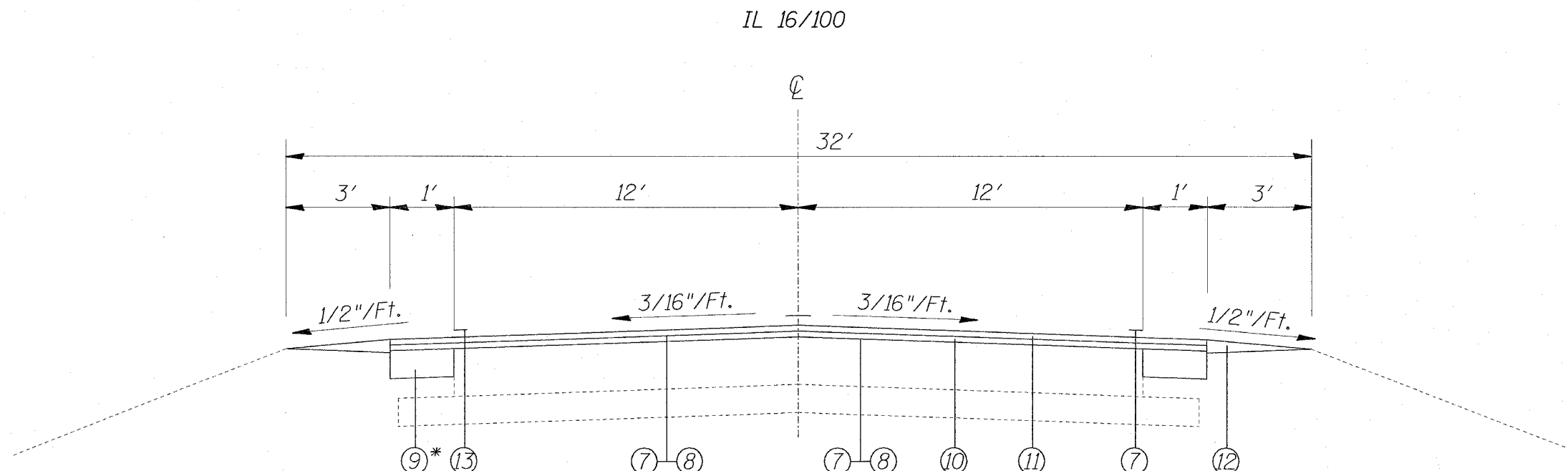
REVISIONS	
NAME	DATE

ILLINOIS DEPARTMENT OF TRANSPORTATION
EXISTING TYPICAL SECTIONS
 FAP ROUTE 304 (IL 16/IL 100)
 SECTION 6RS-2
 JERSEY COUNTY

SCALE: VERT.
HORIZ.
DATE

DRAWN BY
CHECKED BY

FAP ROUTE	SECTION	COUNTY	TOTAL SHEETS	SHEET NO.
304	GRS-2	JERSEY	12	5
STA.		TO STA.		
CONTRACT NUMBER:		76942		

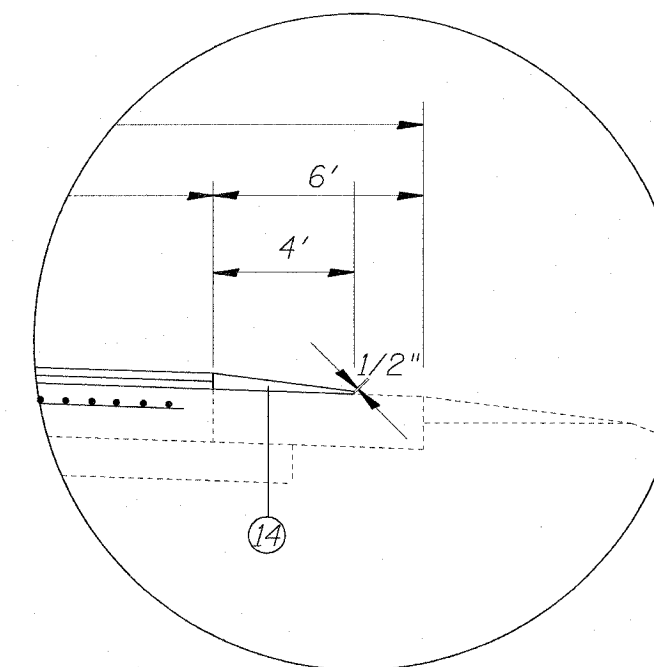


PROPOSED TYPICAL SECTION

STA. 742+66 TO STA. 796+00

* NO SAFETY SHOULDERS AT THESE STATIONS, SEE DETAIL B

STA. 754+29.1 RT TO STA. 759+63.6 RT
 STA. 754+97.0 LT TO STA. 758+96.6 LT
 STA. 779+56.80 RT TO STA. 786+46.9 RT
 STA. 780+13.37 LT TO STA. 785+13.31 LT



DETAIL B

- ① EXISTING SUB-BASE GRANULAR MATERIAL TYPE A, 6"
- ② EXISTING PCC PAVEMENT 10"
- ③ EXISTING PAVEMENT FABRIC
- ④ EXISTING BITUMINOUS SHOULDER 9"
- ⑤ EXISTING AGGREGATE WEDGE
- ⑥ EXISTING PAVEMENT MARKING
- ⑦ PROPOSED BITUMINOUS MATERIAL PRIME COAT
- ⑧ PROPOSED AGGREGATE PRIME COAT
- ⑨ PROPOSED BITUMINOUS CONCRETE BINDER COURSE SUPERPAVE, IL-19.0 N70, 3.5"
- ⑩ PROPOSED LEVEL BINDER (MACHINE METHOD) SUPERPAVE, N70, 1"
- ⑪ PROPOSED BITUMINOUS CONCRETE SURFACE COURSE SUPERPAVE, MIX "C", N70, 1 1/2"
- ⑫ PROPOSED AGGREGATE SHOULDERS, TYPE B
- ⑬ PROPOSED THERMOPLASTIC PAVEMENT MARKINGS
- ⑭ PROPOSED BITUMINOUS SHOULDERS, SUPERPAVE

PLOT DATE = 3/29/2006
 FILE NAME = c:\projects\408596\plan\p14d8505a.dgn
 PLOT SCALE = 60.0000 / IN.
 REFERENCE = REF*

REVISIONS	
NAME	DATE

ILLINOIS DEPARTMENT OF TRANSPORTATION
PROPOSED TYPICAL SECTIONS
 FAP ROUTE 304 (IL 16/IL 100)
 SECTION GRS-2
 JERSEY COUNTY

SCALE: VERT.
 HORIZ.
 DATE

DRAWN BY
 CHECKED BY

FAP ROUTE	SECTION	COUNTY	TOTAL SHEETS	SHEET NO
304	GRS-2	JERSEY	12	6
STA. _____		TO STA. _____		
CONTRACT NUMBER: 76942				

PATCHING SCHEDULE

LOCATION*	SIZE	LANE	PARTIAL DEPTH REMOVAL, 3"	PARTIAL DEPTH PATCH	SAW CUTS	CLASS D PATCHES, TYPE II, 10"	LOCATION*	SIZE	LANE	PARTIAL DEPTH REMOVAL, 3"	PARTIAL DEPTH PATCH	SAW CUTS	CLASS D PATCHES, TYPE II, 10"	LOCATION*	SIZE	LANE	PARTIAL DEPTH REMOVAL, 3"	PARTIAL DEPTH PATCH	SAW CUTS	CLASS D PATCHES, TYPE II, 10"							
			SQ YD	TON						FOOT	SQ YD						SQ YD	TON			FOOT	SQ YD					
744+47	2X12	EB	2.7	0.4			761+02	2X12	EB	2.7	0.4			779+85	2X12	EB	2.7	0.4									
	2X12	WB	2.7	0.4				2X12	WB	2.7	0.4				2X12	WB	2.7	0.4									
745+65	2X12	EB	2.7	0.4			762+18	4X2	EB	0.9	0.1			780+87	2X12	EB	2.7	0.4									
	2X12	WB	2.7	0.4										2X12	WB	2.7	0.4										
746+65	2X12	EB	2.7	0.4			762+76	2X12	EB	2.7	0.4			782+21	2X12	EB	2.7	0.4									
	2X12	WB	2.7	0.4				2X12	WB	2.7	0.4				2X12	WB	2.7	0.4									
747+66	4X12	EB	5.3	0.9			763+32							784+83	2X12	EB	2.7	0.4									
	2X12	WB	2.7	0.4				2X12	WB	2.7	0.4				2X12	WB	2.7	0.4									
748+68	4X12	EB	5.3	0.9			763+77	2X12	EB	2.7	0.4			785+48	2X12	EB	2.7	0.4									
	4X12	WB	5.3	0.9				2X12	WB	2.7	0.4				2X12	WB	2.7	0.4									
749+68	4X12	EB			32	5.3	764+77	2X12	EB	2.7	0.4			785+64													
	4X12	WB			32	5.3		2X12	WB	2.7	0.4				2X12	WB	2.7	0.4									
751+68	4X12	EB	5.3	0.9			766+59							786+37	2X12	EB	2.7	0.4									
	4X12	WB	5.3	0.9				4X2	WB	0.9	0.1				2X12	WB	2.7	0.4									
752+69	4X12	EB	5.3	0.9			766+78	2X12	EB	2.7	0.4			787+23	4X8	EB	3.6	0.6									
	4X12	WB	5.3	0.9				2X12	WB	2.7	0.4																
753+69	4X12	EB	5.3	0.9			767+40	2X2	EB	0.4	0.1			787+39	4X12	EB			32	5.3							
	4X12	WB	5.3	0.9										4X12	WB			32	5.3								
754+70	3X12	EB	4.0	0.7			769+80	3X12	EB	4.0	0.7			788+00	4X6	EB	2.7	0.4									
	3X12	WB	4.0	0.7				3X12	WB	4.0	0.7																
755+70	2X12	EB	2.7	0.4			770+81	4X12	EB			32	5.3	788+40													
	2X12	WB	2.7	0.4				4X12	WB			32	5.3		2X12	WB	2.7	0.4									
756+70	2X12	EB	2.7	0.4			771+82								2X12	WB	2.7	0.4									
	2X12	WB	2.7	0.4				2X12	WB	2.7	0.4																
758+54	2X12	EB	2.7	0.4			772+82				0.0			793+42	2X12	EB	2.7	0.4									
	2X12	WB	2.7	0.4				3X12	WB	4.0	0.7																
759+74	2X12	EB	2.7	0.4			773+83	2X12	EB	2.7	0.4			794+42	2X12	EB	2.7	0.4									
	2X12	WB	2.7	0.4										2X12	WB	2.7	0.4										
760+09	2X12	EB	2.7	0.4			774+83	2X12	EB	2.7	0.4			795+42	2X12	EB	2.7	0.4									
	2X12	WB	2.7	0.4				3X12	WB	4.0	0.7				2X12	WB	2.7	0.4									
760+54	2X12	EB	2.7	0.4			775+99	3X12	EB	4.0	0.7			797+23	6X8	EB			28	5.3							
								3X12	WB	4.0	0.7																
760+69	4X2	EB	0.9	0.1			777+85	3X12	EB	4.0	0.7			798+46	6X12	EB			36	8.0							
								3X12	WB	4.0	0.7				6X12	WB			36	8.0							
760+76	2X12	EB	2.7	0.4			778+84	3X12	EB	4.0	0.7																
								3X12	WB	4.0	0.7																
SUB-TOTALS			107.6	18.1	64.0	10.7	SUB-TOTALS			79.6	13.4	64.0	10.7	SUB-TOTALS			56.9	9.6	164.0	32.0	TOTALS			244.0	41.0	292.0	53.3
+15% (ANTICIPATED PATCHES)																	36.6	6.1	43.8	8.0	FINAL TOTALS			280.6	47.1	335.8	61.3

*DISTANCES WERE MEASURED FROM THE END OF RESURFACING (APPROXIMATE STATION 743+30) ALONG THE OUTSIDE OF THE CURVE, STATIONS SHOULD BE CONSIDERED APPROXIMATE.

EARTHWORK

LOCATION		EARTH EXCAVATION	
IL 100/IL 16	LANE	CUBIC YARD	
STA TO STA			
742+66 TO 745+00	BOTH	5	
745+00 TO 747+50	BOTH	5	
747+50 TO 750+00	BOTH	5	
750+00 TO 752+50	BOTH	5	
752+50 TO 754+29	BOTH	4	
754+29 TO 754+97	LT	1	
754+97 TO 754+97	RT		
754+97 TO 756+54	BOTH		
757+42 TO 758+97	BOTH		
758+97 TO 759+64	RT		
758+97 TO 759+64	LT	1	
759+64 TO 762+50	BOTH	6	
762+50 TO 765+00	BOTH	5	
765+00 TO 767+50	BOTH	5	
767+50 TO 770+00	BOTH	5	
770+00 TO 772+50	BOTH	5	
772+50 TO 775+00	BOTH	5	
775+00 TO 777+50	BOTH	5	
777+50 TO 779+57	BOTH	4	
779+57 TO 780+13	LT	1	
779+57 TO 780+13	RT		
780+13 TO 781+82	BOTH		
783+45 TO 785+13	BOTH		
785+13 TO 786+47	RT		
785+13 TO 786+47	LT	3	
786+47 TO 787+50	BOTH	2	
787+50 TO 790+00	BOTH	5	
792+50 TO 795+00	BOTH	5	
795+00 TO 796+00	BOTH	2	
TOTALS		90	

BUTT JOINT AND TEMPORARY RAMP SCHEDULE

LOCATION		BITUMINOUS SURFACE REMOVAL, BUTT JOINT	PCC SURFACE REMOVAL, BUTT JOINT	TEMPORARY RAMP
STA TO STA	REASON			
IL 16/100		SQ YD	SQ YD	SQ YD
742+14 TO 742+64	BEGIN JOB	133.3		13.3
756+04 TO 756+54	BRIDGE		133.3	13.3
757+42 TO 757+92	BRIDGE		133.3	13.3
781+32 TO 781+82	BRIDGE		133.3	13.3
783+45 TO 783+95	BRIDGE		133.3	13.3
796+00 TO 796+50	END JOB	133.3		13.3
ELDRED RD				
577+57 TO 578+07	END JOB	172.2		17.2
TOTALS		438.9	533.3	97.2

ILLINOIS DEPARTMENT OF TRANSPORTATION

SCHEDULES OF QUANTITIES

FAP ROUTE 304 (IL 16/IL 100)
SECTION 6RS-2
JERSEY COUNTY

DRAWN BY:

REVISIONS	
NAME	DATE

PLOT DATE = 2/29/2005
FILE NAME = C:\WORK\68565\plan\100000.dgn
PLOT SCALE = 50,000 / IN.
REFERENCE = #REF#

FAP ROUTE	SECTION	COUNTY	TOTAL SHEETS	SHEET NO
304	GRS-2	JERSEY	12	7
STA. _____ TO STA. _____		CONTRACT NUMBER: 76942		

PAVEMENT SCHEDULE

LOCATION	LANE	BITUMINOUS MATERIALS (PRIME COAT)	AGGREGATE (PRIME COAT)	LEVEL BINDER (MACHINE METHOD), SUPERPAVE, N70	BITUMINOUS CONCRETE BINDER COURSE, SUPERPAVE, IL-19.0, N70	BITUMINOUS CONCRETE SURFACE COURSE, SUPERPAVE, MIX "C", N70	AGGREGATE SHOULDERS, TYPE B	BITUMINOUS SHOULDERS, SUPERPAVE	INCIDENTAL BITUMINOUS SURFACING
		TON	TON	TON	TON	TON	TON	TON	TON
IL 100/IL 16									
STA TO STA									
742+66 TO 745+00	BOTH	0.42	2.0	38	5	57	10.8		
745+00 TO 747+50	BOTH	0.45	2.2	40	5	61	11.6		
747+50 TO 750+00	BOTH	0.45	2.2	40	5	61	11.6		
750+00 TO 752+50	BOTH	0.45	2.2	40	5	61	11.6		
752+50 TO 754+29	BOTH	0.32	1.6	29	4	43	8.3		
754+29 TO 754+97	LT	0.06	0.3	6	1	8	3.1		
754+29 TO 754+97	RT	0.06	0.3	5		8		0.8	
754+97 TO 756+54	BOTH	0.26	1.3	23		35		3.9	
757+42 TO 758+97	BOTH	0.26	1.2	23		35		3.9	
758+97 TO 759+64	RT	0.06	0.3	5		8		0.8	
758+97 TO 759+64	LT	0.06	0.3	5	1	8	3.1		
759+64 TO 762+50	BOTH	0.52	2.5	46	6	69	13.2		
762+50 TO 765+00	BOTH	0.45	2.2	40	5	61	11.6		
765+00 TO 767+50	BOTH	0.45	2.2	40	5	61	11.6		
767+50 TO 770+00	BOTH	0.45	2.2	40	5	61	11.6		
770+00 TO 772+50	BOTH	0.45	2.2	40	5	61	11.6		
772+50 TO 775+00	BOTH	0.45	2.2	40	5	61	11.6		
775+00 TO 777+50	BOTH	0.45	2.2	40	5	61	11.6		
777+50 TO 779+57	BOTH	0.37	1.8	33	5	50	9.6		
779+57 TO 780+13	LT	0.05	0.2	5	1	7	2.6		
779+57 TO 780+13	RT	0.05	0.2	4		6		0.7	
780+13 TO 781+82	BOTH	0.28	1.4	25		38		4.2	
783+45 TO 785+13	BOTH	0.28	1.3	25		38		4.2	
785+13 TO 786+47	RT	0.11	0.5	10		15		1.7	
785+13 TO 786+47	LT	0.12	0.6	11	3	16	6.2		
786+47 TO 787+50	BOTH	0.19	0.9	17	2	25	4.8		
787+50 TO 790+00	BOTH	0.45	2.2	40	5	61	11.6		
792+50 TO 795+00	BOTH	0.45	2.2	40	5	61	11.6		
795+00 TO 796+00	BOTH	0.18	0.9	16	2	24	4.6		
ELDRED RD									
STA TO STA									
577+57 TO 578+00	BOTH	0.10	0.5	9		13	5.9		
578+00 TO 579+00	BOTH	0.23	1.1	21		31	4.6		
579+00 TO 579+57	BOTH	0.22	1.0	19		29	2.6		
BUSBY LANE									
STA									
745+60									5.3
SHAW HOLLOW ROAD									
STA									
755+60									6.4
BUTT JOINT AREAS									
IL 16/IL 100									
STA TO STA									
742+16 TO 742+66	BOTH	0.04	0.2			15	2.3		
756+04 TO 756+54	BOTH	0.04	0.2			15	2.3		
757+42 TO 757+92	BOTH	0.04	0.2			15	2.3		
781+32 TO 781+82	BOTH	0.04	0.2			15	2.3		
783+45 TO 783+95	BOTH	0.04	0.2			15	2.3		
796+00 TO 796+50	BOTH	0.04	0.2			15	2.3		
ELDRED RD									
STA TO STA									
577+07 TO 577+57	BOTH	0.05	0.2			19	2.3		
TOTALS									
		9.4	45	820	91	1320	331	20	12

*AGGREGATE WEDGE QUANTITY IS BASED 3' WIDE WEDGE 3" THICK AT PAVEMENT PLUS 50% FOR LOW AREAS

PAVEMENT MARKING

LOCATION	STATION TO STATION	PAINT PAVEMENT MARKING				RAISED REFLECTIVE PAVEMENT MARKER REMOVAL	RAISED REFLECTIVE PAVEMENT MARKER	PRISMATIC CURB REFLECTORS	PAINT CURB	PAINT MEDIAN
		4"		8"						
		SOLID WHITE EDGE LINE	SOLID YELLOW - AROUND MEDIAN	YELLOW SKIP-DASH	YELLOW DIAGONALS					
		FOOT	FOOT	FOOT	FOOT	EACH	EACH	EACH	FOOT	SQ FT
IL 16										
742+16 TO 756+54		2776		350		18	18			
757+42 TO 781+82		4880		610		30	30			
783+45 TO 796+50		2510		320		16	16			
ELDRED RD										
579+44 TO 577+57			464		72			18	96	53
SUB-TOTALS		10166	464	1280	72	64	64	18	96	53
TOTALS			11910		72	64	64	18	96	53

CONCRETE SCHEDULE

LOCATION	C&G REMOVAL	MEDIAN SURFACE REMOVAL	MEDIAN REMOVAL PARTIAL DEPTH	C&G TYPE B, 9.06*	CONC MEDIAN (RAMPED NOSES)	MEDIAN SURFACE	CONC. BASE COURSE 10"	REINFORCEMENT BARS
	FT	SQ FT	SQ FT	FT	SQ FT	SQ FT	SQ YD	LB
ELDRED RD.	126	776	173	51	79	310	51	500
TOTAL	126	776	173	51	79	310	51	500

*GUTTER FLAG VARIES 0.5' TO 1.5' FROM STA 578+55 TO STA 578+73

ILLINOIS DEPARTMENT OF TRANSPORTATION

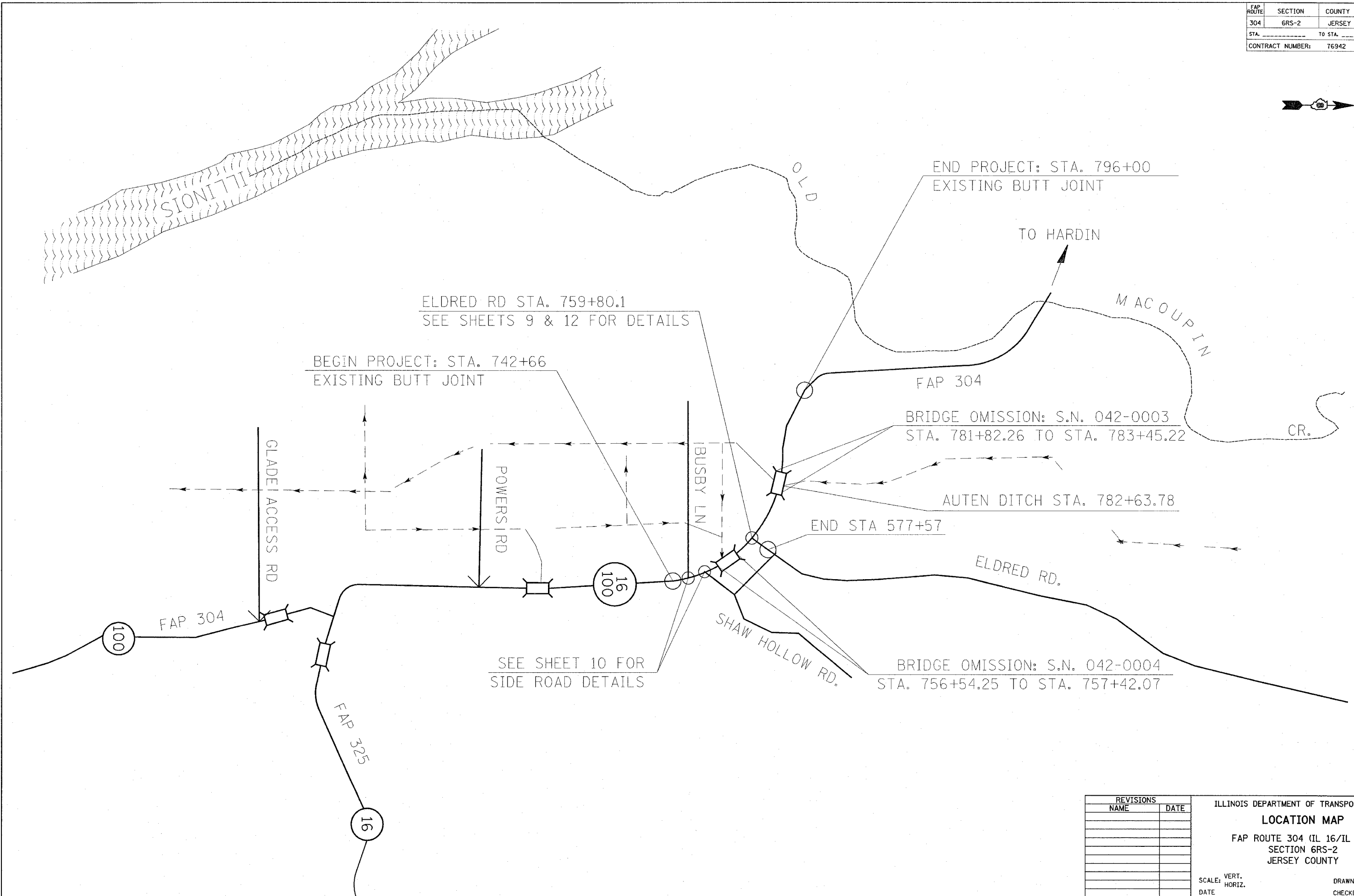
SCHEDULES OF QUANTITIES

FAP ROUTE 304 (IL 16/IL 100)
SECTION 6RS-2
JERSEY COUNTY

REVISIONS	
NAME	DATE

DRAWN BY:

FAP ROUTE	SECTION	COUNTY	TOTAL SHEETS	SHEET NO.
304	GRS-2	JERSEY	12	8
STA. _____		TO STA. _____		
CONTRACT NUMBER: 76942				



PLOT DATE = 3/23/2006
 FILE NAME = c:\projects\add085925\plan\pln085925.dgn
 PLOT SCALE = 1/8" = 100'
 REFERENCE = #REF#

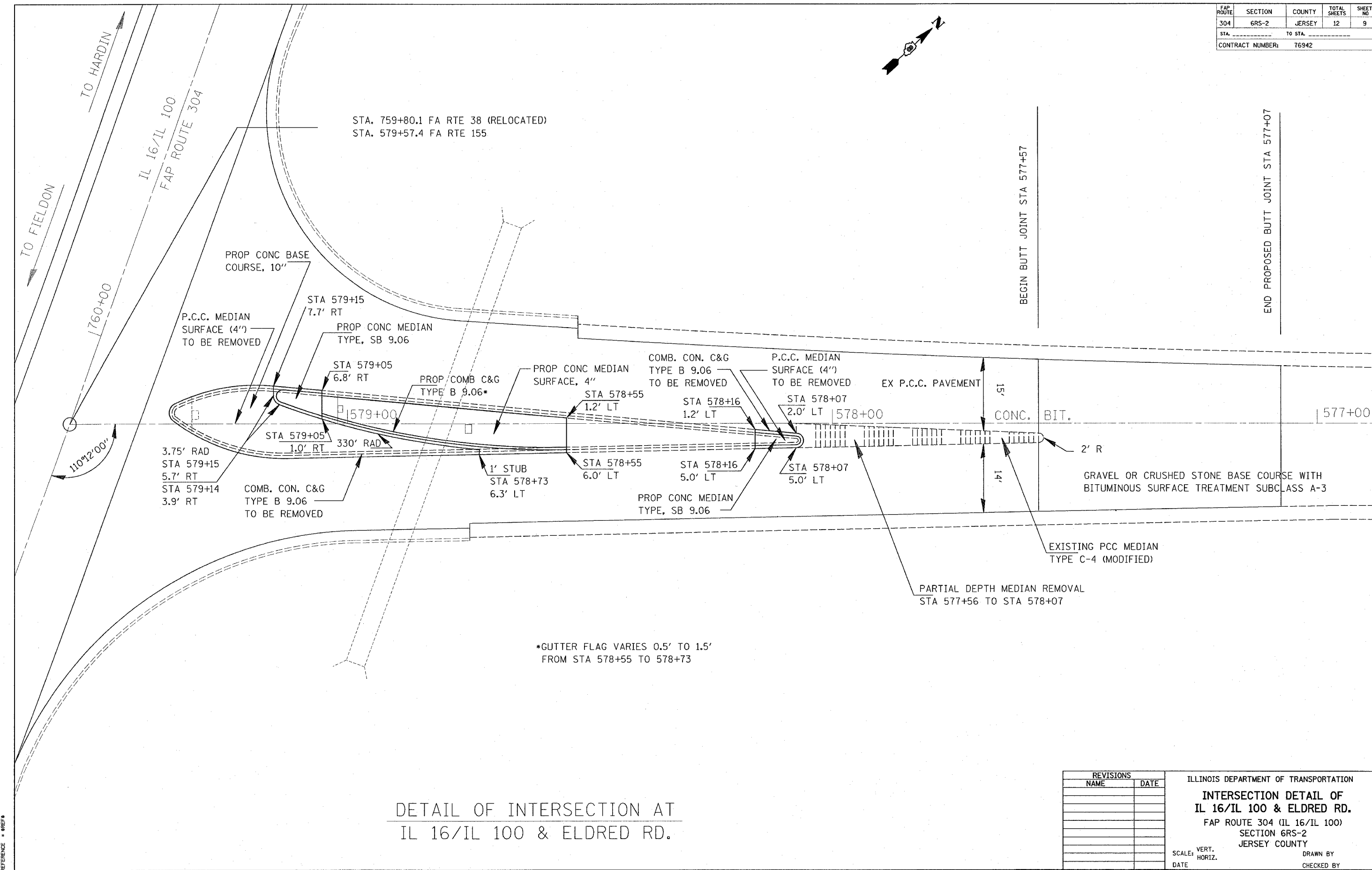
REVISIONS	
NAME	DATE

ILLINOIS DEPARTMENT OF TRANSPORTATION
LOCATION MAP
 FAP ROUTE 304 (IL 16/IL 100)
 SECTION GRS-2
 JERSEY COUNTY

SCALE: VERT. _____
 DATE _____

DRAWN BY _____
 CHECKED BY _____

FAP ROUTE	SECTION	COUNTY	TOTAL SHEETS	SHEET NO
304	GRS-2	JERSEY	12	9
STA.		TO STA.		
CONTRACT NUMBER: 76942				



STA. 759+80.1 FA RTE 38 (RELOCATED)
 STA. 579+57.4 FA RTE 155

TO FIELDON

TO HARDIN

IL 16/IL 100
 FAP ROUTE 304

PROP CONC BASE COURSE, 10"

P.C.C. MEDIAN SURFACE (4") TO BE REMOVED

STA 579+15
 7.7' RT

PROP CONC MEDIAN TYPE, SB 9.06

STA 579+05
 6.8' RT

PROP/COMB C&G TYPE B 9.06*

PROP CONC MEDIAN SURFACE, 4"

COMB. CON. C&G TYPE B 9.06 TO BE REMOVED

P.C.C. MEDIAN SURFACE (4") TO BE REMOVED

EX P.C.C. PAVEMENT

CONC. BIT.

2' R

GRAVEL OR CRUSHED STONE BASE COURSE WITH BITUMINOUS SURFACE TREATMENT SUBCLASS A-3

EXISTING PCC MEDIAN TYPE C-4 (MODIFIED)

PARTIAL DEPTH MEDIAN REMOVAL STA 577+56 TO STA 578+07

*GUTTER FLAG VARIES 0.5' TO 1.5' FROM STA 578+55 TO 578+73

1760+00

110°12'00"

3.75' RAD
 STA 579+15
 5.7' RT
 STA 579+14
 3.9' RT

COMB. CON. C&G TYPE B 9.06 TO BE REMOVED

STA 579+05
 1.0' RT

330' RAD

1' STUB
 STA 578+73
 6.3' LT

STA 578+55
 1.2' LT

STA 578+55
 6.0' LT

PROP CONC MEDIAN TYPE, SB 9.06

STA 578+16
 1.2' LT

STA 578+16
 5.0' LT

STA 578+07
 2.0' LT

STA 578+07
 5.0' LT

15'

14'

BEGIN BUTT JOINT STA 577+57

577+00

DETAIL OF INTERSECTION AT
 IL 16/IL 100 & ELDRED RD.

REVISIONS	
NAME	DATE

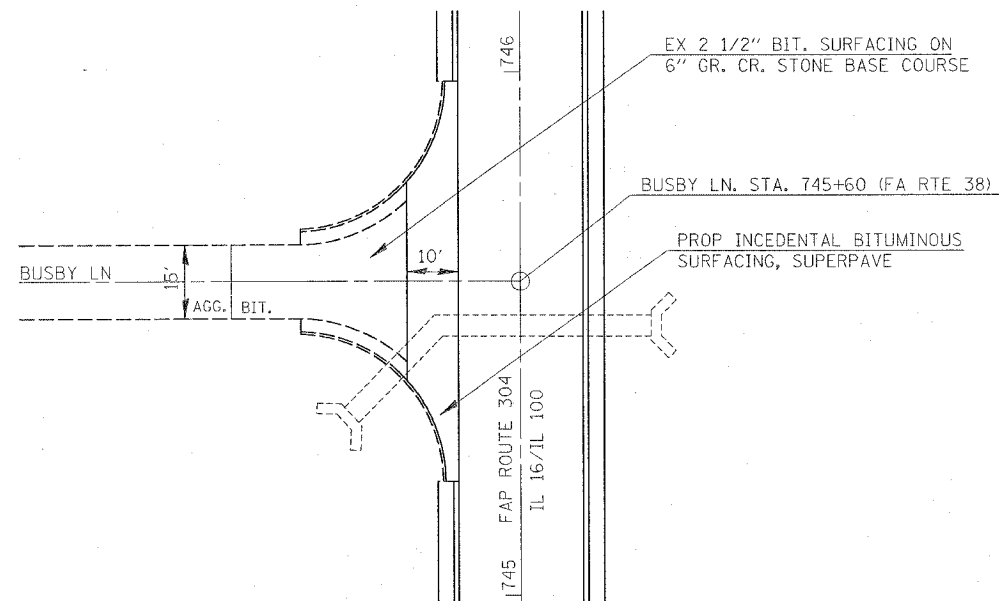
ILLINOIS DEPARTMENT OF TRANSPORTATION
**INTERSECTION DETAIL OF
 IL 16/IL 100 & ELDRED RD.**
 FAP ROUTE 304 (IL 16/IL 100)
 SECTION 6RS-2
 JERSEY COUNTY

SCALE: VERT. _____
 HORIZ. _____

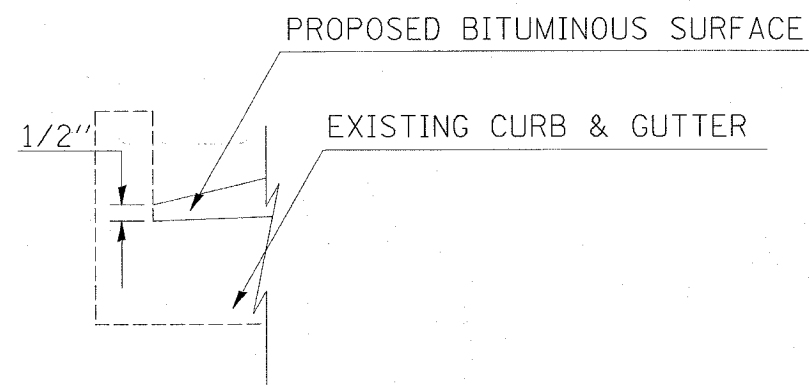
DATE _____ DRAWN BY _____
 CHECKED BY _____

PLOT DATE = 2/29/2006
 FILE NAME = C:\WORK\4886505\plan\11086505.dgn
 PLOT SCALE = 16.8177 / IN.
 REFERENCE = *REF*

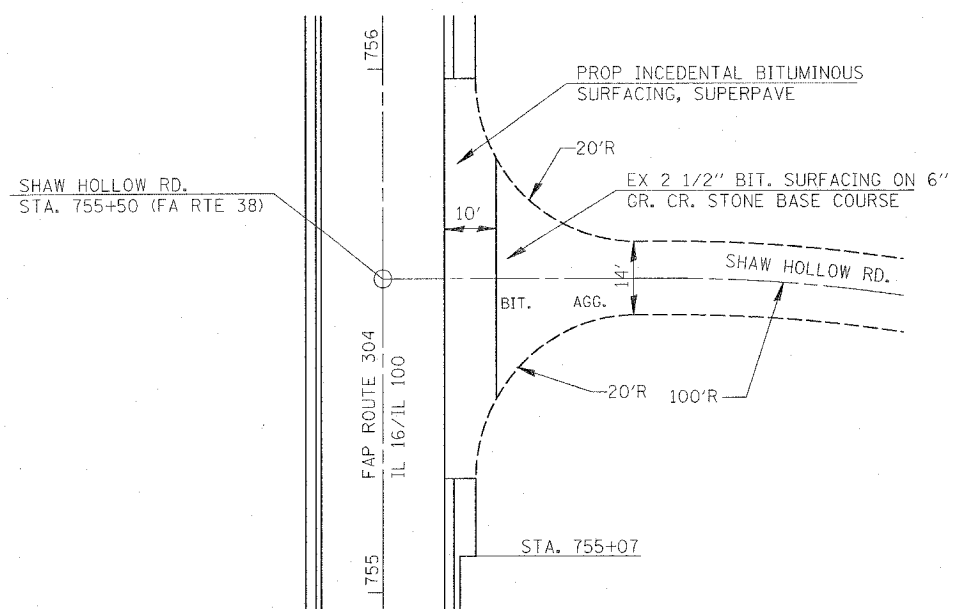
FAP ROUTE	SECTION	COUNTY	TOTAL SHEETS	SHEET NO
304	GRS-2	JERSEY	12	10
STA.	TO STA.			
CONTRACT NUMBER: 76942				



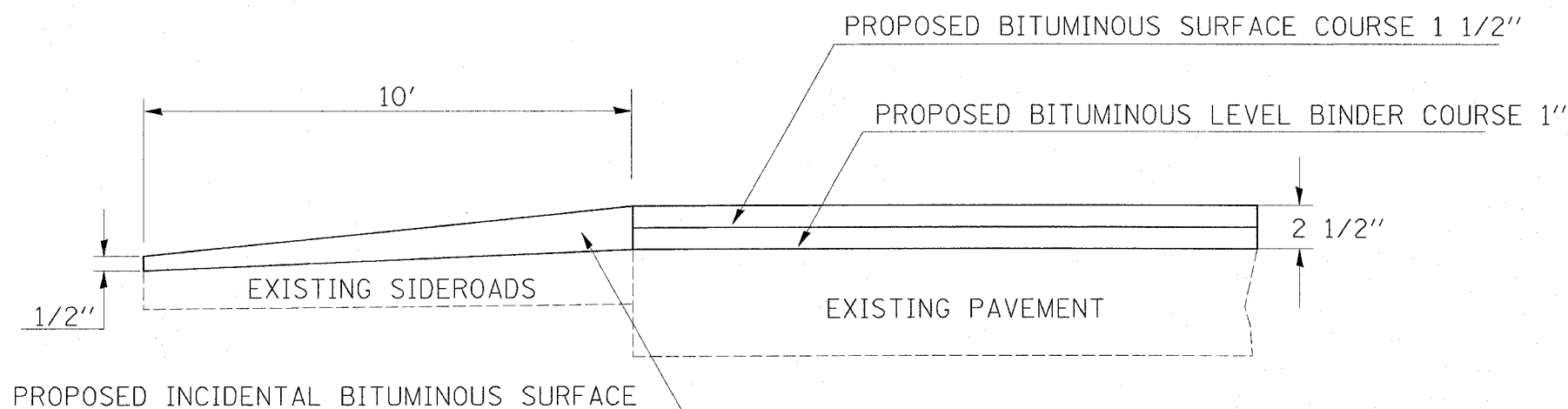
DETAIL OF INTERSECTION AT
IL 16/IL 100 & BUSBY LN.



FEATHEREDGE DETAIL AT CURB AND GUTTER



DETAIL OF INTERSECTION AT
IL 16/IL 100 & SHAW HOLLOW RD.



FEATHEREDGE DETAIL FOR SIDEROAD ENTRANCES

BUSBY LN. STA. 745+60 LT
SHAW HOLLOW RD. STA. 755+50 RT

REVISIONS	
NAME	DATE

ILLINOIS DEPARTMENT OF TRANSPORTATION

INTERSECTION DETAILS

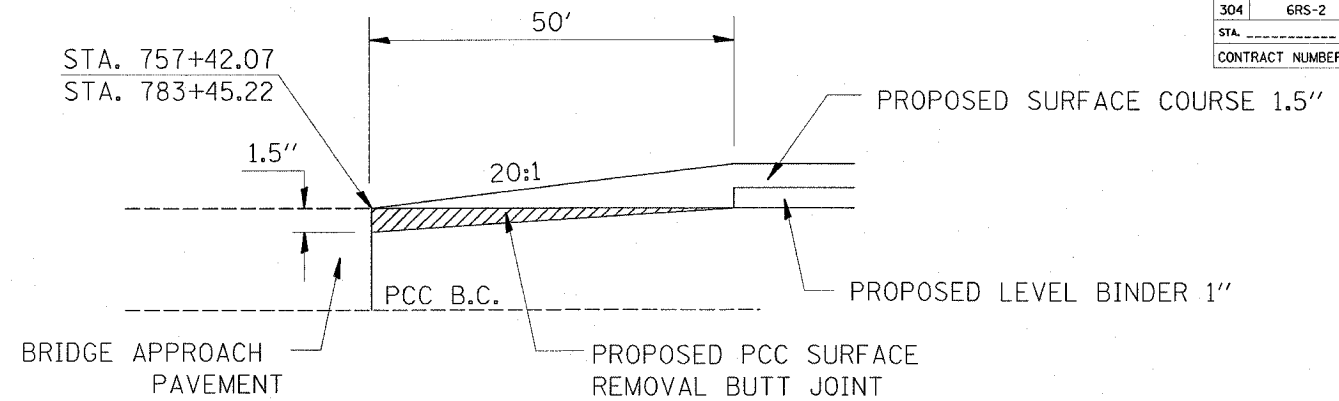
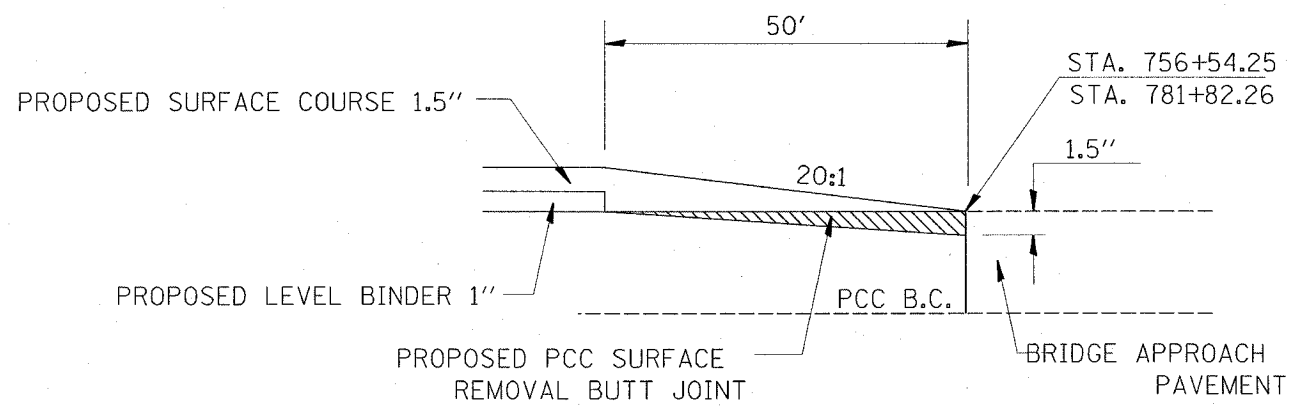
FAP ROUTE 304 (IL 16/IL 100)
SECTION 6RS-2
JERSEY COUNTY

SCALE: VERT.
HORIZ.
DATE

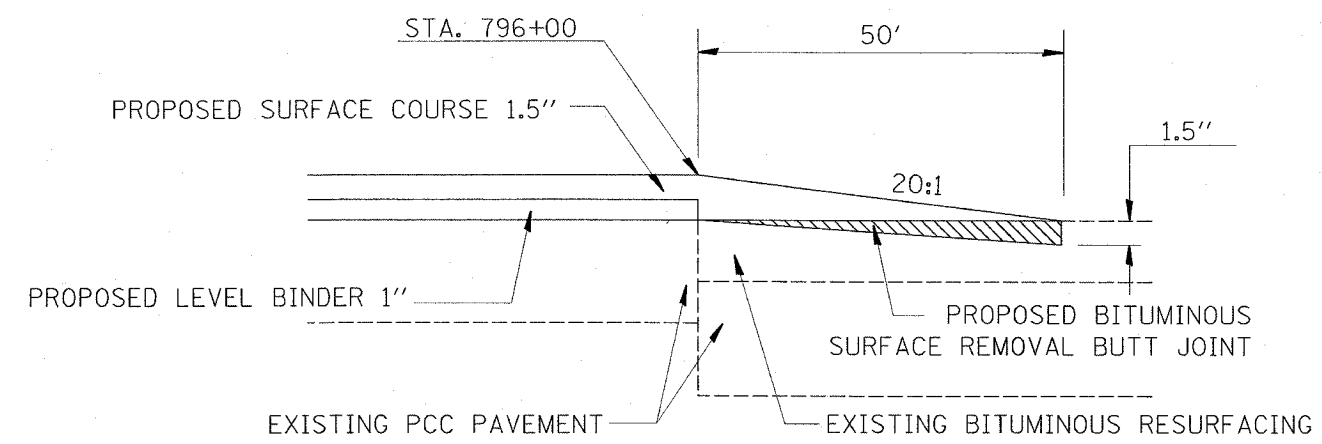
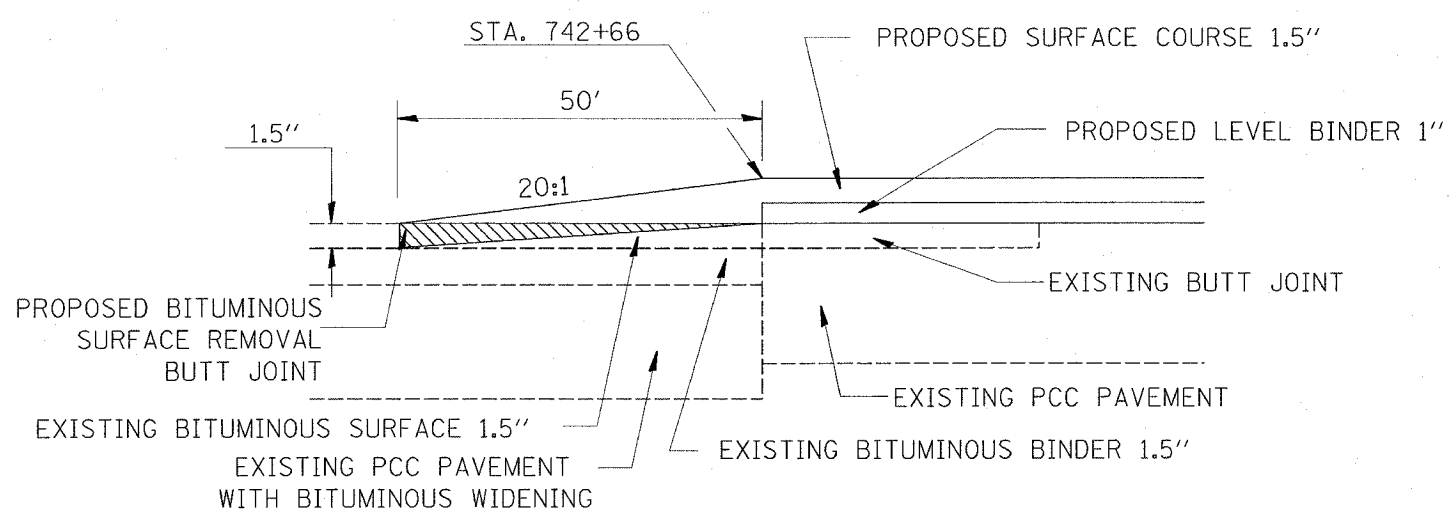
DRAWN BY
CHECKED BY

PLOT DATE = 3/29/2006
FILE NAME = c:\pwork\jcs\6885\plan\pl1481916.dgn
PLOTTER = HPGL/IN
REFERENCE = REF#

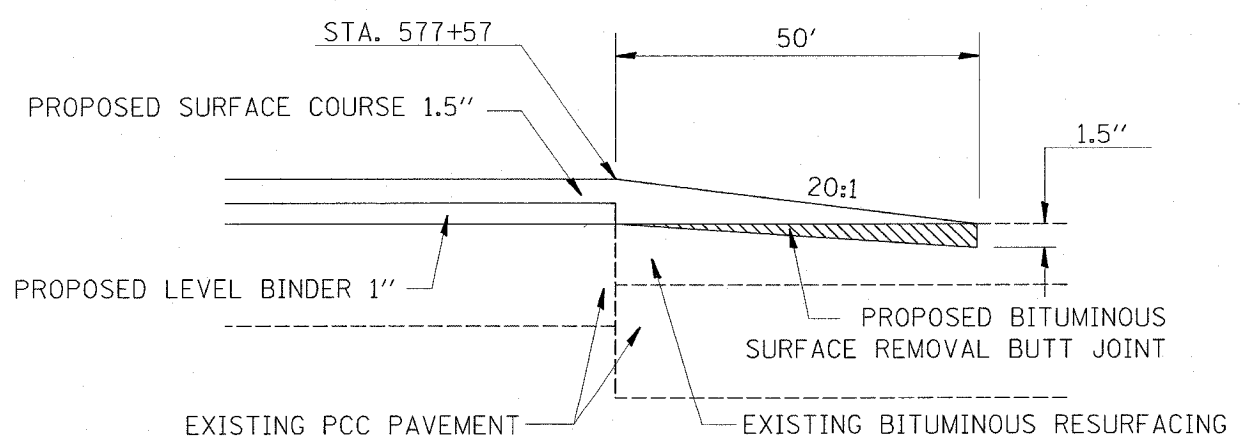
FAP ROUTE	SECTION	COUNTY	TOTAL SHEETS	SHEET NO
304	GRS-2	JERSEY	12	11
STA. _____ TO STA. _____		CONTRACT NUMBER: 76942		



BUTT JOINT DETAIL FOR BRIDGES



BUTT JOINT DETAIL FOR IL 16



BUTT JOINT DETAIL FOR ELDRED RD

REVISIONS	
NAME	DATE

ILLINOIS DEPARTMENT OF TRANSPORTATION
BUTT JOINT DETAILS
 FAP ROUTE 304 (IL 16/IL 100)
 SECTION 6RS-2
 JERSEY COUNTY
 DRAWN BY: _____

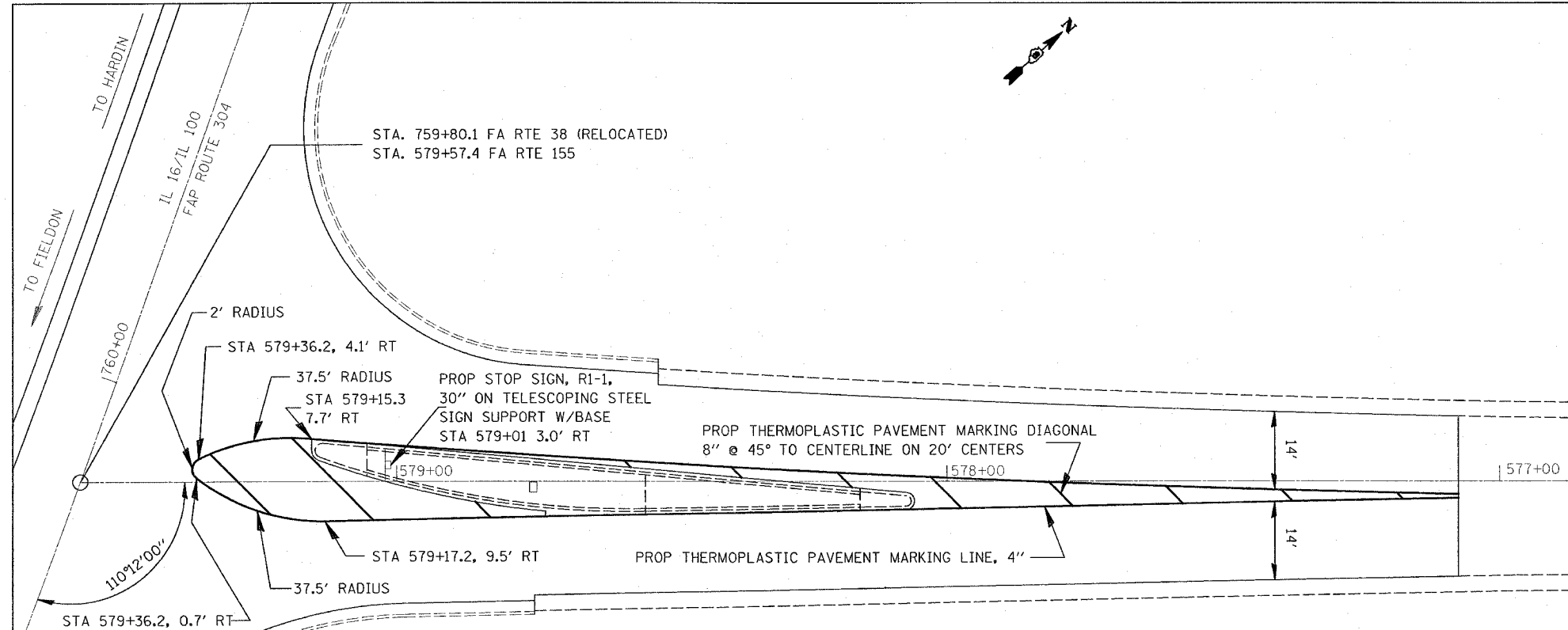
PLOT DATE: 3/29/2006

DATE	BY	REVISION

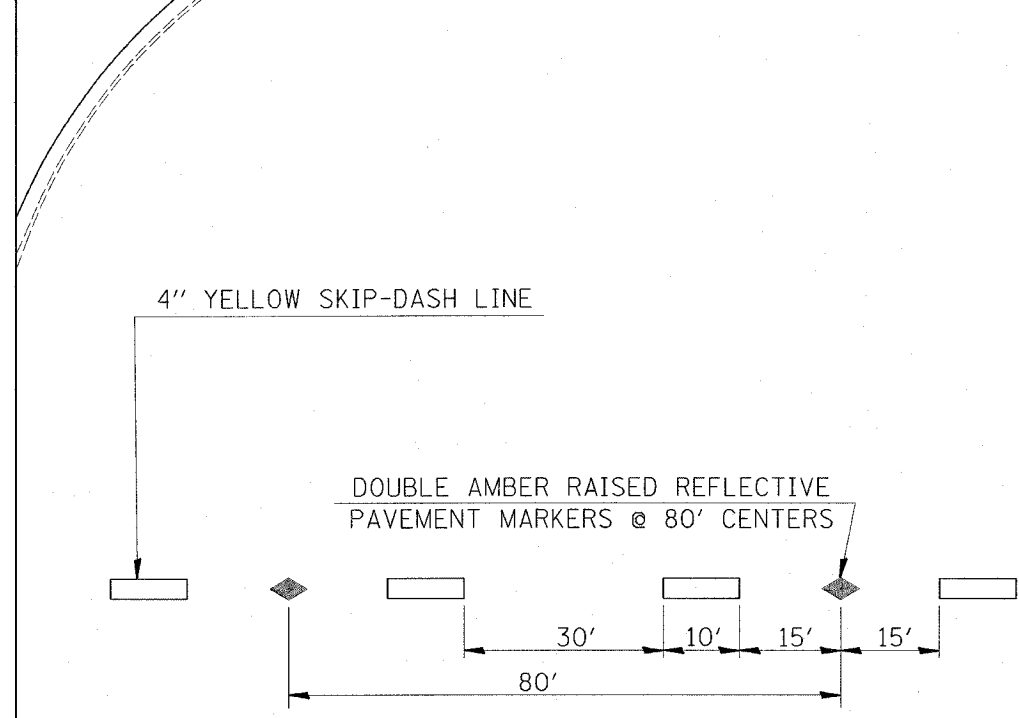
PLANNING
 DESIGN
 CONSTRUCTION
 MAINTENANCE
 MATERIALS
 TESTING
 TRAFFIC CONTROL
 UTILITIES
 ENVIRONMENTAL
 SAFETY
 SPECIAL SERVICES
 DISTRICT OFFICES
 REGIONAL OFFICES
 HEADQUARTERS

FAP ROUTE	SECTION	COUNTY	TOTAL SHEETS	SHEET NO
304	GRS-2	JERSEY	12	12
STA.	TO STA.			
CONTRACT NUMBER: T6942				

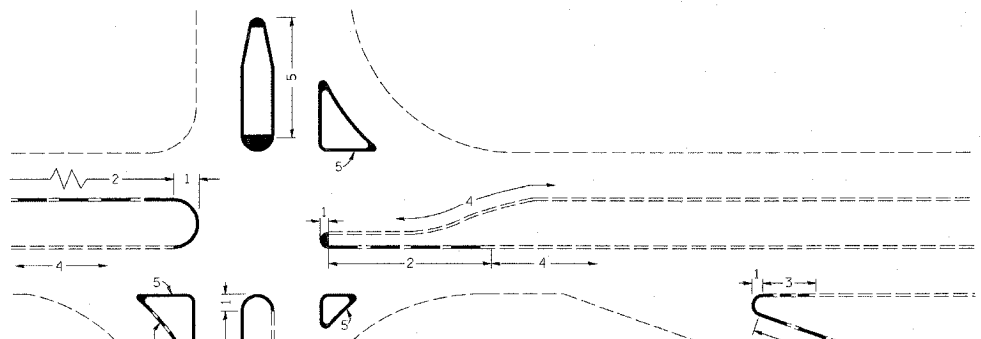
PLAN	DATE
REVISIONS	BY
NO.	DATE
DESCRIPTION	
1.	
2.	
3.	
4.	
5.	
6.	
7.	
8.	
9.	
10.	
11.	
12.	
13.	
14.	
15.	
16.	
17.	
18.	
19.	
20.	
21.	
22.	
23.	
24.	
25.	
26.	
27.	
28.	
29.	
30.	
31.	
32.	
33.	
34.	
35.	
36.	
37.	
38.	
39.	
40.	
41.	
42.	
43.	
44.	
45.	
46.	
47.	
48.	
49.	
50.	
51.	
52.	
53.	
54.	
55.	
56.	
57.	
58.	
59.	
60.	
61.	
62.	
63.	
64.	
65.	
66.	
67.	
68.	
69.	
70.	
71.	
72.	
73.	
74.	
75.	
76.	
77.	
78.	
79.	
80.	
81.	
82.	
83.	
84.	
85.	
86.	
87.	
88.	
89.	
90.	
91.	
92.	
93.	
94.	
95.	
96.	
97.	
98.	
99.	
100.	



DETAIL FOR MEDIAN STRIPING



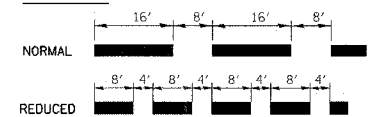
TYPICAL APPLICATION FOR YELLOW SKIP-DASH LINES WITH RAISED REFLECTIVE PAVEMENT MARKERS



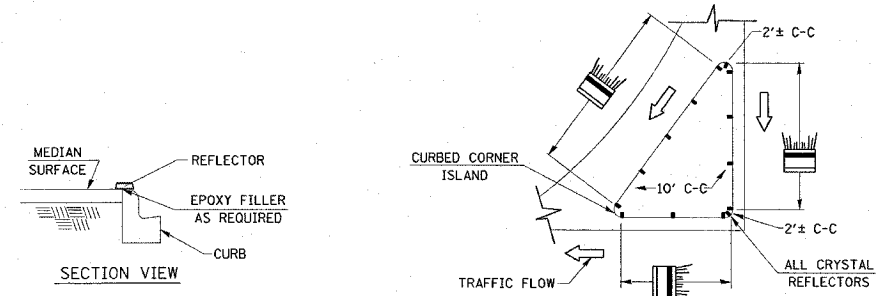
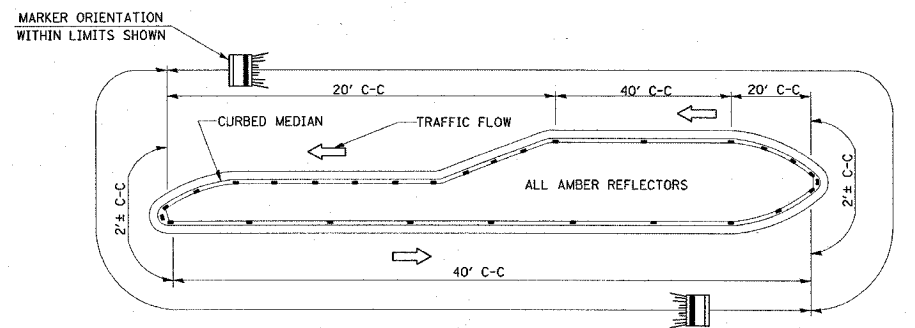
NOTES

1. PAINT CURB AND NOSE SOLID FOR 10 FEET OR RADIUS OF NOSE, WHICHEVER IS GREATER.
2. PAINT MINIMUM OF 3 STRIPES IN DIRECTION OF TRAFFIC.
3. REDUCED SPACING USED TO OBTAIN 3 STRIPES MINIMUM.
4. STRIPING RECOMMENDED ONLY WHERE OPERATIONAL PROBLEMS DICTATE.
5. PAINT SOLID WHERE A MINIMUM OF 3 STRIPES CANNOT BE PLACED.

SPACING



CURB MARKING



TYPICAL PLACEMENT OF PRISMATIC REFLECTORS ON CURBS (NO SCALE)

- NOTES
1. PRISMATIC REFLECTORS SHALL BE MONO-DIRECTIONAL AND POSITIONED SO THAT THE REFLECTIVE FACE IS FACING THE APPROACHING TRAFFIC.
 2. PRISMATIC REFLECTORS SHALL BE SECURED IN PLACE WITH AN EPOXY ADHESIVE.
 3. PRISMATIC REFLECTORS SHALL BE EITHER AMBER OR CRYSTAL IN COLOR.

REVISIONS	
NAME	DATE

ILLINOIS DEPARTMENT OF TRANSPORTATION
PAVEMENT MARKINGS DETAILS
 FAP ROUTE 304 (IL 16/IL 100)
 SECTION GRS-2
 JERSEY COUNTY

DRAWN BY:

PLOT DATE: 3/29/2006

3/29/2006
 ct:\projects\1008595\plan\p108595.dgn
 REF
 REF