

76A16

F.A.P. RTE.	SECTION	COUNTY	TOTAL SHEETS	SHEET NO.
329	125-1B-1-1	RANDOLPH	5	1

### INDEX OF SHEETS

- COVER PAGE, INDEX OF SHEETS, HIGHWAY STANDARDS, SUMMARY OF QUANTITIES
- PLAN ELEVATION
- 5. REPAIR DETAILS

### HIGHWAY STANDARDS

701006-02  
701201-02  
702001-06

# STATE OF ILLINOIS

## DEPARTMENT OF TRANSPORTATION

### DIVISION OF HIGHWAYS

# PROPOSED HIGHWAY PLANS

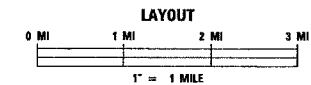
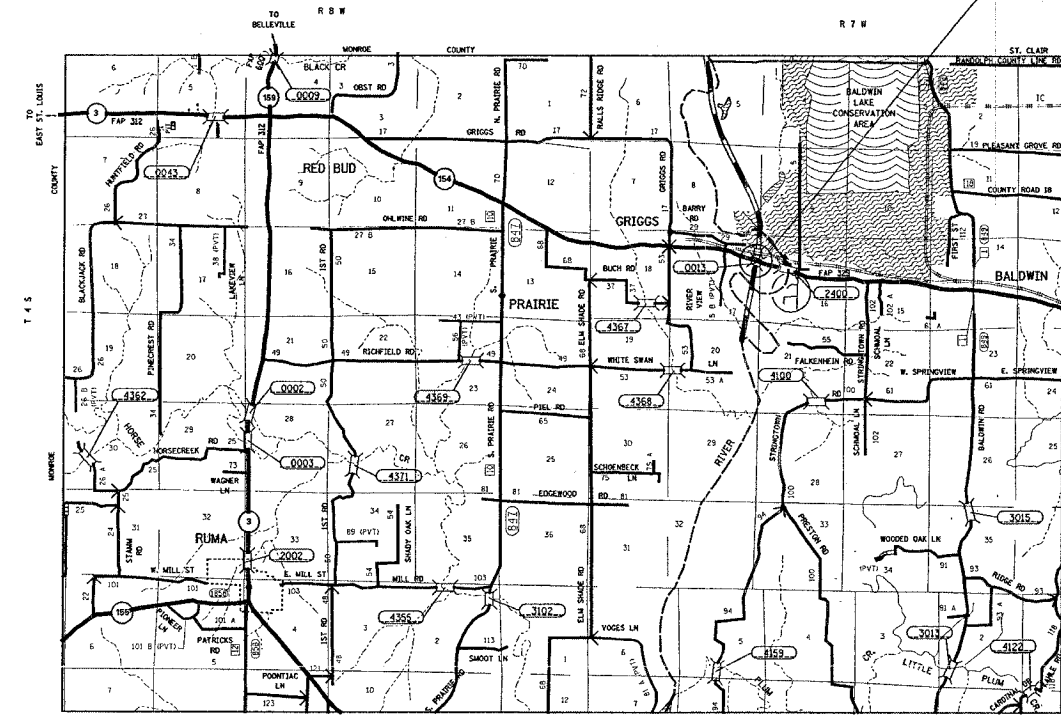
FAP ROUTE 329 (IL 154)  
SECTION 125-1B-1-1  
HOAN DETAIL RETROFIT  
RANDOLPH COUNTY  
C-98-044-06

SUMMARY OF QUANTITIES			TOTAL QUANTITIES	100% STATE SFTY-2A
CODE NO	ITEM	UNIT		
50501130	STRUCTURAL STEEL REPAIR	POUND	3290	3290
67100100	MOBILIZATION	L SUM	1	1
70100450	TRAFFIC CONTROL AND PROTECTION, STANDARD 701201	L SUM	1	1
X0322556	STIFFENER INTERSECTION MODIFICATION	EACH	200	200

D-98-056-06

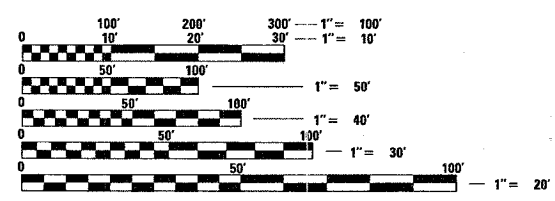


PROJECT LOCATION  
IL 154 OVER KASKASKIA RIVER  
SN: 079-0013  
STA 321+96.23



LATITUDE: 38.18919 LONGITUDE: 89.89031

MICROFILMED \_\_\_\_\_  
REEL NUMBER \_\_\_\_\_  
AWARDED \_\_\_\_\_  
RESIDENT ENGINEER \_\_\_\_\_  
AS BUILT CHANGES WERE MADE ON THE FOLLOWING SHEETS



FULL SIZE PLANS HAVE BEEN PREPARED USING STANDARD ENGINEERING SCALES. REDUCED SIZED PLANS WILL NOT CONFORM TO STANDARD SCALES. IN MAKING MEASUREMENTS ON REDUCED PLANS, THE ABOVE SCALES MAY BE USED.

J.U.L.I.E.  
JOINT UTILITY LOCATION INFORMATION FOR EXCAVATION  
1-800-892-0123

TRAFFIC DATA  
ADT: 4300 (2006)  
ADT: 4350 (2007)  
SU: 4.1%  
MU: 7.6%

CONTRACT NO. 76A16

PROJECT ENGINEER: PATTI LEBEAU (618) 346-3179  
SQUAD CONTACT: ART MUEHLFELD (618) 346-3209

STATE OF ILLINOIS  
DEPARTMENT OF TRANSPORTATION  
DIVISION OF HIGHWAYS

SUBMITTED March 22, 2006  
May C. Davis  
DEPUTY DIRECTOR OF HIGHWAYS  
REGION FIVE ENGINEER

May 12, 2006  
Mike Hine  
ENGINEER OF DESIGN AND ENVIRONMENT

May 12, 2006  
Milton P. See, P.E.  
DIRECTOR, DIVISION OF HIGHWAYS

PRINTED BY THE AUTHORITY OF THE STATE OF ILLINOIS