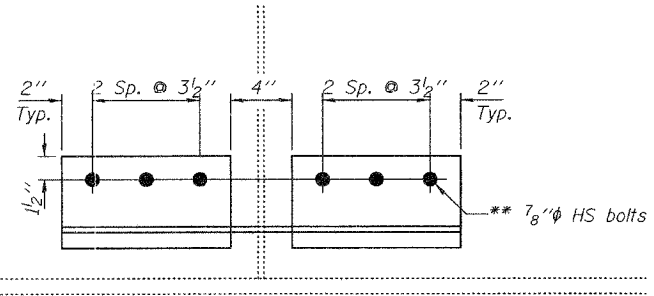
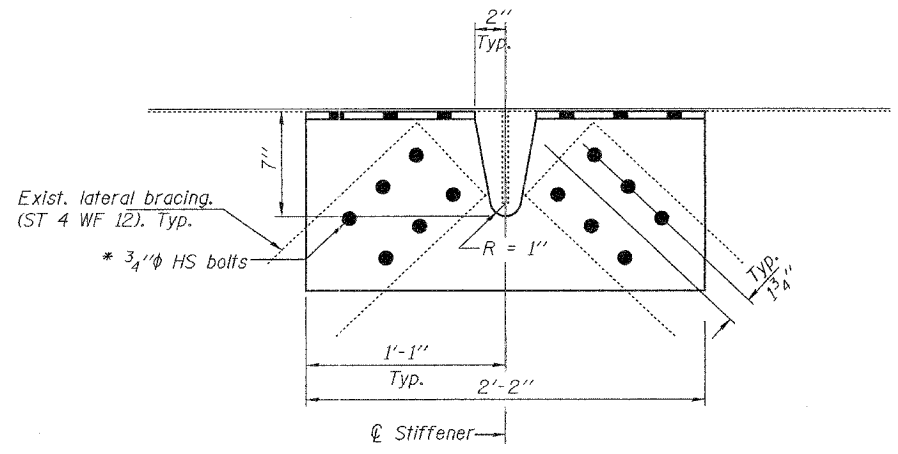


STATE OF ILLINOIS
DEPARTMENT OF TRANSPORTATION



ELEVATION



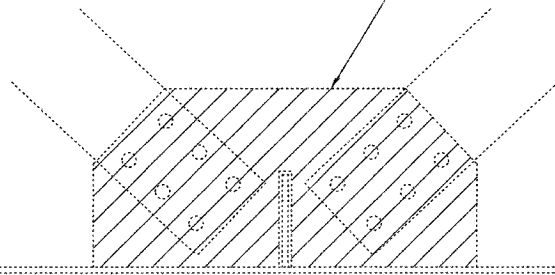
PLAN
REPAIRS A THRU A9
P 3/8" x 11" x 2'-2"

* Use holes in existing lateral bracing as a template for drilling holes on new plate.
** Use holes in new 1/2" x 6" P as a template for drilling holes in existing web.

REPAIR	N	NO. REQ'D.
A	4 1/16"	1
A1	4 5/8"	2
A2	4 13/16"	3
A3	4 9/16"	3
A4	5"	5
A5	3"	21
A6	4 3/4"	3
A7	4 1/2"	1
A8	4 7/16"	1
A9	4 3/8"	1

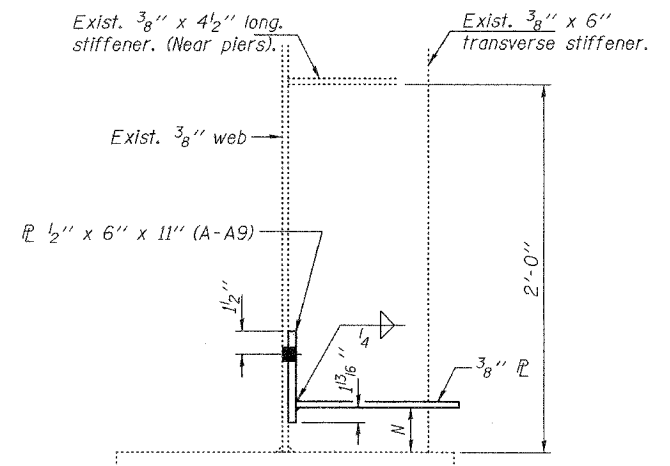
Procedure for Lateral Bracing Retrofit Detail:
(Cost included with Structural Steel Repair)

1. Remove existing 3/8" connecting plate. The minimum distance from cut to face of web shall be the larger of 1/4" or web to plate weld size, with removal of remaining material by grinding as described below. The cut shall be made parallel to the web without angling the cut towards the web. Equipment and method of cutting shall be approved by the Engineer. Any method of removal to be used shall ensure that no damage is done to the existing web, vertical stiffener or welds connecting these elements. Cutting shall be done in a manner such that the paint on the opposite face of the web is not damaged. If damage occurs, the damaged area shall be repainted at the contractor's expense and procedures shall be modified to prevent damage at subsequent removal locations.
2. Remove material between cut and web by grinding and grind smooth at web surface. Web plate surfaces shall have a roughness average (Ra) of 250µ in. or less. Grinding equipment shall be approved by the Engineer. The grinding operation should not gouge the girder web plate.
3. The web surface at the modification shall be inspected using dye penetrant or magnetic particle (MT) methods. Any cracks found shall be identified and reported to the Bureau of Bridges and Structures for further disposition.



REPAIR A THRU A9
EXISTING CONNECTION PLATE REMOVAL
(See table for no. req'd.)

Notes:
Work at adjacent connection locations shall not be performed concurrently.
At each location, the 2 lateral bracing members shall be removed and stored to allow removal of the connection plate and shall be re-installed after erection of the new brackets. Cost shall be included with Structural Steel Repair.



SECTION THRU GIRDER
(A-A9)

REPAIR DETAILS
FAP RT. 329 (IL 154)
RANDOLPH COUNTY
SN 079-0013

DESIGNED	SJB
CHECKED	ATH
DRAWN	ballva
CHECKED	SJB ATH

APRIL 27, 2006
EXAMINED *John A. Morris*
ENGINEER OF STRUCTURAL SERVICES
PASSED *Ralph E. Anderson*
ENGINEER OF BRIDGES AND STRUCTURES