

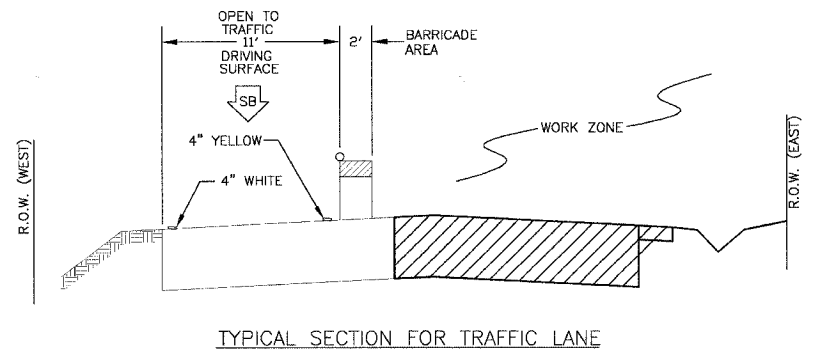
F.A.U. ROUTE NO.	SECTION	COUNTY	TOTAL SHEETS	SHEET NO.
2774	99-00073-00-WR	COOK	116	21B
SIA TO STA		FED. ROAD DIST. NO. 1		
ILLINOIS		FED AID PROJECT CMM-7003 (750)		
CONTRACT NO. 83727				

LOCAL DETOUR PLAN LEGEND

- SIGN
- ○ TYPE III BARRICADE(S) WITH 18 UNLESS OTHERWISE NOTED



SCALE: 1" = 600'



TYPICAL SECTION FOR TRAFFIC LANE

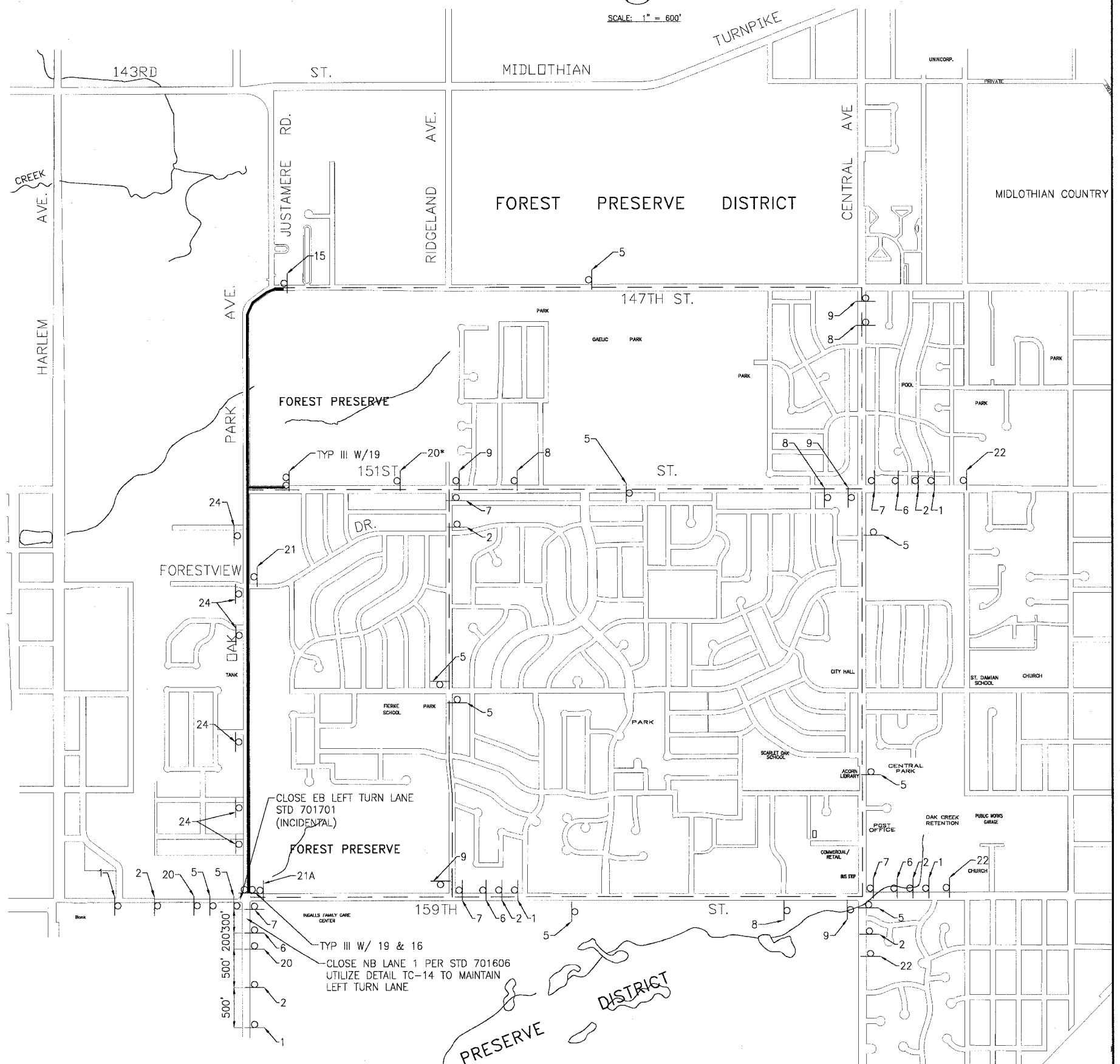
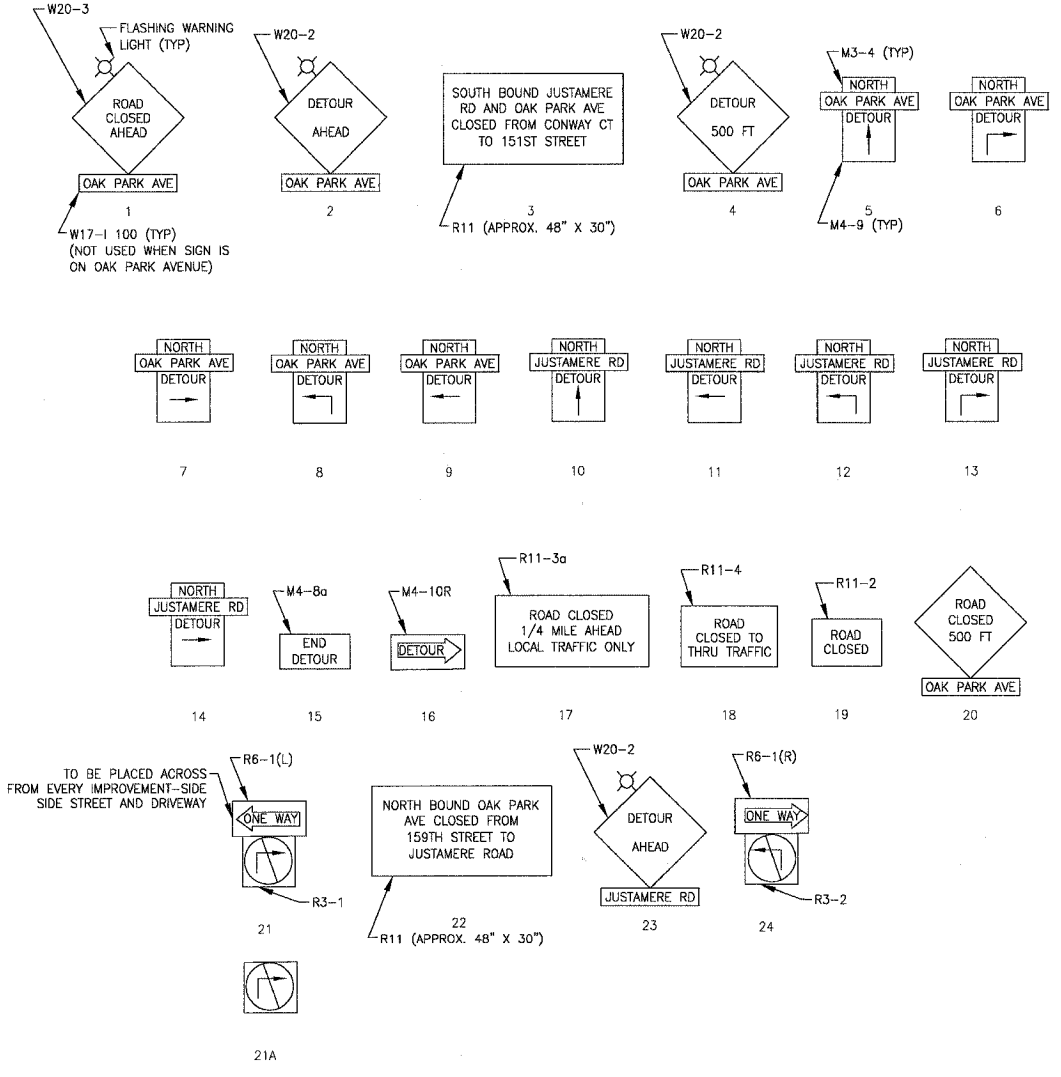
SUGGESTED SEQUENCE OF CONSTRUCTION STAGE 3

1. PROVIDE TRAFFIC CONTROL AND PROTECTION. CONSTRUCTION OPERATIONS INVOLVING THE TEMPORARY CLOSURE OF ROADS SHALL NOT BEGIN WITHOUT AT LEAST THREE DAYS PRIOR NOTICE TO THE CITY BY THE CONTRACTOR. SOUTH BOUND TRAFFIC SHALL REMAIN OPEN; SOUTHBOUND TRAFFIC SHALL BE DETOURED.
2. CONSTRUCT REMAINING STORM SEWER, AND EAST PAVEMENT PATCHING AND WIDENING IMPROVEMENTS.
3. INSTALL PERMANENT TRAFFIC SIGNALS.
4. CONSTRUCT FINAL PAVEMENT SURFACING AND RESTORATION IN WORK ZONES.
5. PLACE TEMPORARY PAVEMENT MARKINGS AND OPEN TO TRAFFIC.
6. CONSTRUCT FINAL PAVEMENT SURFACING, PAVEMENT MARKINGS AND RESTORATION UNDER TRAFFIC.

DETOUR SIGN DETAILS

(SEE LOCAL DETOUR PLAN FOR LOCATION)

NOTE: W17-1 100 ROAD NAME SIGN NOT USED WHEN ON CLOSURE ROUTE
NOTE: * = NAME PLATE NOT NECESSARY



I:\GAR\CT\C20146\DWG\20146-DETOUR-MAF.dwg
 Plotted by: jmm
 Date: 11/15/06
 Scale: 1/8" = 1'-0"
 License No.: 184-001121 - Expires 4-30-05

CONSULTANTS	REV. NO.	DATE	DESCRIPTION
	1	4-28-06	PER IDOT AND COOK COUNTY COMMENTS
	2	5-19-06	PER IDOT COMMENTS

* - REFER TO EQUIPMENT MANUFACTURER'S SHOP DRAWINGS

BAXTER & WOODMAN
 Consulting Engineers
 Crystal Lake, Illinois 815.459.1260
 Burlington, Wisconsin 262.763.7834
 Mokena, Illinois 708.478.2090
 DeKalb, Illinois 815.787.3111
 Crystal Lake, Illinois 815.223.5088
 Rockford, Illinois 815.496.1551
 Plainfield, Illinois 815.609.7425

**CITY OF OAK FOREST, ILLINOIS
 OAK PARK AVENUE PROJECT**

**MAINTENANCE OF TRAFFIC
 TEMPORARY DETOUR
 STAGE 3**

DESIGNED BY	SCALE
DRAWN BY	NONE
CHECKED BY	PROJECT NO. Q20146
DATE	SHEET NO.
1-20-05	21B OF 116