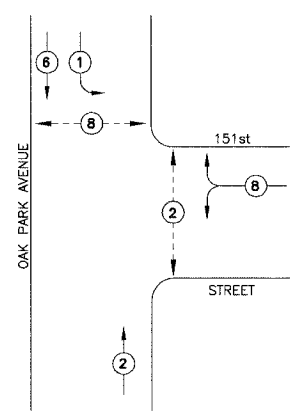


F.A.P. ROUTE NO.	SECTION	COUNTY	TOTAL SHEETS	SHEET NO.
2774	99-00073-00-WR	COOK	116	77
STA.	TO STA.		FED. AID PROJECT	
FED. ROAD DIST. NO. 1	ILLINOIS		CMM-7003 (750)	
CONTRACT NO. 83727				

### CABLE PLAN LEGEND

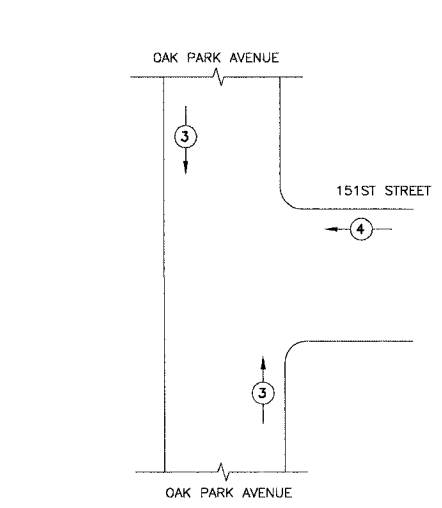
- |   |          |  |          |  |
|---|----------|--|----------|--|
|   | EXISTING |  | PROPOSED | 8" (200mm) TRAFFIC SIGNAL SECTION  |
|   |          |  |          | 12" (300mm) TRAFFIC SIGNAL SECTION                                       |
|   |          |  |          | 12" (300mm) PEDESTRIAN SIGNAL SECTION                                    |
|   |          |  |          | 12" (300mm) PEDESTRIAN SIGNAL SECTION                                    |
|   |          |  |          | CONTROLLER CABINET   |
|   |          |  |          | SERVICE INSTALLATION   |
|   |          |  |          | TELEPHONE INSTALLATION   |
|   |          |  |          | VEHICLE DETECTOR, INDUCTION LOOP   |
|   |          |  |          | MAGNETIC DETECTOR  |
|   |          |  |          | EMERGENCY VEHICLE LIGHT DETECTOR   |
|   |          |  |          | CONFIRMATION BEACON  |
|   |          |  |          | PUSHBUTTON DETECTOR  |
| DENOTES NUMBER OF CONDUCTORS.<br>ALL CABLE NO. 14 EXCEPT AS INDICATED.<br>ALL LOOP DETECTOR CABLE TO BE SHIELDED. |          |  |          |  |
|   |          |  |          | GROUND CABLE IN CONDUIT<br>NO. 6 SOLID COPPER (GREEN)                    |
|   |          |  |          | FIBER OPTIC CABLE IN CONDUIT<br>NO. 62.5/125 2-MM12F SM12F               |
| SIGNAL FACE WITH BACKPLATE.<br>"P" INDICATES PROGRAMMED HEAD.   |          |  |          |  |
|   |          |  |          | RAILROAD CONTROL CABINET   |
|   |          |  |          | ILLUMINATED SIGN<br>"NO LEFT TURN"                                       |
|   |          |  |          | ILLUMINATED SIGN<br>"NO RIGHT TURN"                                      |
|   |          |  |          | GROUND ROD AT HANDHOLE (H),<br>DOUBLE HANDHOLE (H), OR<br>CONTROLLER (C) |
|   |          |  |          | GROUND ROD AT POST (P)<br>OR MAST ARM POLE (MA)                          |
|   |          |  |          | GROUND ROD AT ELECTRIC<br>SERVICE INSTALLATION                           |

### CONTROLLER SEQUENCE



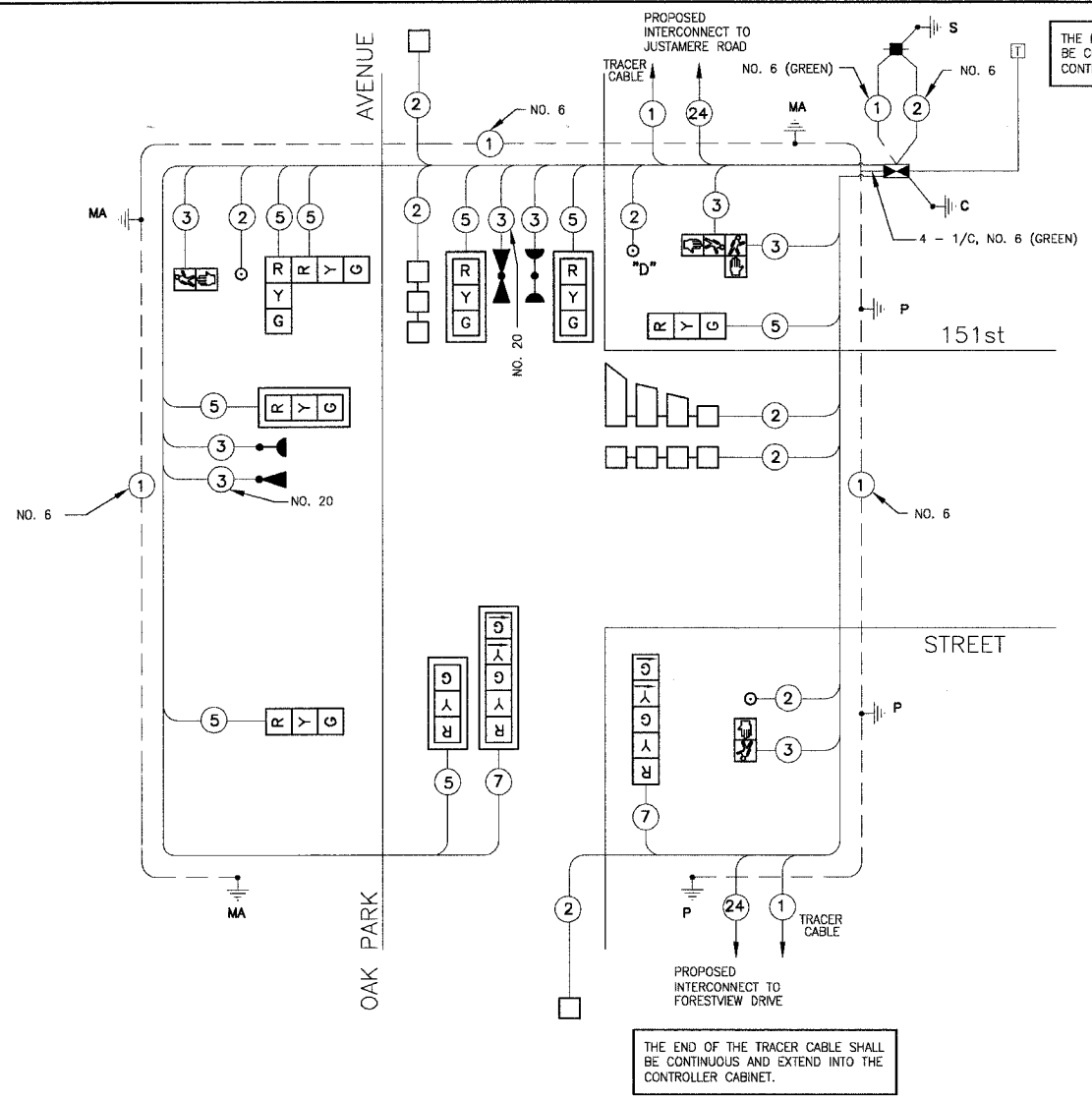
### PHASE DESIGNATION DIAGRAM

- LEGEND
- DUAL ENTRY PHASE
  - PEDESTRIAN PHASE
  - OVERLAP
  - \* NUMBER REFERS TO ASSOCIATED PHASE



### EMERGENCY VEHICLE PREEMPTION SEQUENCE

PROPOSED EMERGENCY VEHICLE PREEMPTORS	
EMERGENCY VEHICLE PREEMPTORS	3 4
MOVEMENT	↑ ↓



### CABLE DIAGRAM

NOTES:  
PUSHBUTTON "D" SHALL PLACE A CALL IN PHASES 2 AND 8

THE END OF THE TRACER CABLE SHALL BE CONTINUOUS AND EXTEND INTO THE CONTROLLER CABINET.

THE END OF THE TRACER CABLE SHALL BE CONTINUOUS AND EXTEND INTO THE CONTROLLER CABINET.

### SCHEDULE OF QUANTITIES

PAY ITEM	UNIT	QUANTITY
SIGN PANEL - TYPE 1	SQ FT	21
CONDUIT IN TRENCH, 2" DIA., GALVANIZED STEEL	FOOT	515
CONDUIT IN TRENCH, 2 1/2" DIA., GALVANIZED STEEL	FOOT	85
CONDUIT IN TRENCH, 3" DIA., GALVANIZED STEEL	FOOT	5
CONDUIT IN TRENCH, 4" DIA., GALVANIZED STEEL	FOOT	10
CONDUIT PUSHED, 2" DIA., GALVANIZED STEEL	FOOT	149
CONDUIT PUSHED, 2 1/2" DIA., GALVANIZED STEEL	FOOT	27
CONDUIT PUSHED, 3" DIA., GALVANIZED STEEL	FOOT	20
CONDUIT PUSHED, 4" DIA., GALVANIZED STEEL	FOOT	171
HANDHOLE HEAVY DUTY HANDHOLE	EACH	3
DOUBLE HANDHOLE	EACH	3
TRENCH AND BACKFILL FOR ELECTRICAL WORK	EACH	1
MAINTENANCE OF EXISTING TRAFFIC SIGNAL INSTALLATION	EACH	615
FULL - ACTUATED CONTROLLER AND TYPE V CABINET	EACH	1
TRANSCEIVER - FIBER OPTIC	EACH	1
ELECTRIC CABLE IN CONDUIT, SIGNAL, NO. 14 2C	FOOT	315
ELECTRIC CABLE IN CONDUIT, SIGNAL, NO. 14 3C	FOOT	690
ELECTRIC CABLE IN CONDUIT, SIGNAL, NO. 14 5C	FOOT	1385
ELECTRIC CABLE IN CONDUIT, SIGNAL, NO. 14 7C	FOOT	398
ELECTRIC CABLE IN CONDUIT, LEAD-IN, NO. 14 1 PAIR	FOOT	1083
ELECTRIC CABLE IN CONDUIT, SERVICE, NO. 6, 2C	FOOT	47
TRAFFIC SIGNAL POST, GALVANIZED STEEL, 10 FT.	EACH	1
TRAFFIC SIGNAL POST, GALVANIZED STEEL, 14 FT.	EACH	1
TRAFFIC SIGNAL POST, GALVANIZED STEEL, 16 FT.	EACH	1
STEEL MAST ARM ASSEMBLY AND POLE, 24 FT.	EACH	1
STEEL MAST ARM ASSEMBLY AND POLE, 28 FT.	EACH	1
STEEL MAST ARM ASSEMBLY AND POLE, 48 FT.	EACH	1
CONCRETE FOUNDATION, TYPE A	FOOT	12
CONCRETE FOUNDATION, TYPE D	FOOT	4
CONCRETE FOUNDATION, TYPE E 30" DIAMETER	FOOT	30
CONCRETE FOUNDATION, TYPE E 36" DIAMETER	FOOT	15
TRAFFIC SIGNAL BACKPLATE, LOUVERED	EACH	6
INDUCTIVE LOOP DETECTOR	EACH	5
DETECTOR LOOP, TYPE 1	FOOT	593
LIGHT DETECTOR	EACH	2
LIGHT DETECTOR AMPLIFIER	EACH	1
PEDESTRIAN PUSH BUTTON	EACH	3
TEMPORARY TRAFFIC SIGNAL INSTALLATION	EACH	1
REMOVE ELECTRIC CABLE FROM CONDUIT	FOOT	2771
REMOVE EXISTING TRAFFIC SIGNAL EQUIPMENT	EACH	1
REMOVE EXISTING HANDHOLE	EACH	8
REMOVE EXISTING CONCRETE FOUNDATION	EACH	7
SERVICE INSTALLATION, POLE MOUNT	EACH	1
ELECTRIC CABLE IN CONDUIT, GROUNDING, NO. 6 1C	FOOT	445
ELECTRIC CABLE IN CONDUIT, NO. 20 3/C, TWISTED, SHIELDED	FOOT	288
SIGNAL HEAD, L.E.D., 1-FACE, 3-SECTION, MAST ARM MOUNTED	EACH	5
SIGNAL HEAD, L.E.D., 1-FACE, 3-SECTION, BRACKET MOUNTED	EACH	2
SIGNAL HEAD, L.E.D., 1-FACE, 5-SECTION, BRACKET MOUNTED	EACH	1
SIGNAL HEAD, L.E.D., 1-FACE, 5-SECTION, MAST ARM MOUNTED	EACH	1
SIGNAL HEAD, L.E.D., 2-FACE, 3-SECTION, BRACKET MOUNTED	EACH	1
PEDESTRIAN SIGNAL HEAD, L.E.D., 1-FACE, BRACKET MOUNTED	EACH	2
PEDESTRIAN SIGNAL HEAD, L.E.D., 2-FACE, BRACKET MOUNTED	EACH	1

I.D.O.T. TRAFFIC SIGNAL INSTALLATION ELECTRICAL SERVICE REQUIREMENTS				
TYPE	NO LAMPS	LED WATTAGE	%OPERATION	TOTAL WATTAGE
SIGNAL (RED)	12	17	0.50	102
(YELLOW)	12	25	0.25	75
(GREEN)	12	15	0.25	45
ARROW	4	12	0.10	5
PED. SIGNAL	4	25	1.00	100
CONTROLLER	1	100	1.00	100
ILLUM. SIGN	-	40	0.50	-
STREET LIGHTS	-	250	-	-
FLASHER	-	-	0.50	-
TOTAL =				427

FOUNDATION (DEPTH)	(FT.)	CABLE SLACK (FT.)	VERTICAL (FT.)	(FT.)
TYPE A - POST	4	HANDHOLE	6.5	ALL FOUNDATIONS
D - CONTROLLER	4	DOUBLE HANDHOLE	13	MAST ARM (L) POLE
E - M. ARM POLE	-	SIGNAL POST	2	BRACKET MOUNTED
24"	10"	CONTROLLER CAB.	6	PED. PUSHBUTTON
30"	15	FIBER OPTIC	13	ELECTRIC SERVICE
		ELECTRIC SERVICE	1	SERVICE TO GROUND
		GROUND CABLE	1	POST MOUNTED
				6

ENERGY COSTS BILLED TO: IDOT/DIVISION OF HIGHWAY DISTRICT 1  
(ADDRESS) 201 WEST CENTER COURT SCHAUMBURG, IL 60196-1096

ENERGY SUPPLY CONTACT: JULIE SNOW  
PHONE: 1-866-639-3532  
COMPANY: COMMONWEALTH EDISON

REVISIONS	
NAME	DATE
RWL	7-1-04
RWL	10-1-04
NJP	4-28-06

ILLINOIS DEPARTMENT OF TRANSPORTATION

TRAFFIC SIGNAL  
CABLE AND PHASE DESIGNATION DIAGRAM  
OAK PARK AVENUE AT  
151st STREET

SCALE: NONE  
DATE: 6-1-04

DRAWN BY: UKB  
DESIGNED BY: RWL  
CHECKED BY: RWL

I:\DATA\1020146\DWG\20146-CBLE.dwg  
Plotted: 6-06-06 @ 2:38pm By: 3544jlp  
Copyright © 2004, By: Baxter & Woodman, Inc.  
State of Illinois - Professional Design Firm  
License No. = 184-00112 - Expires 4-30-08