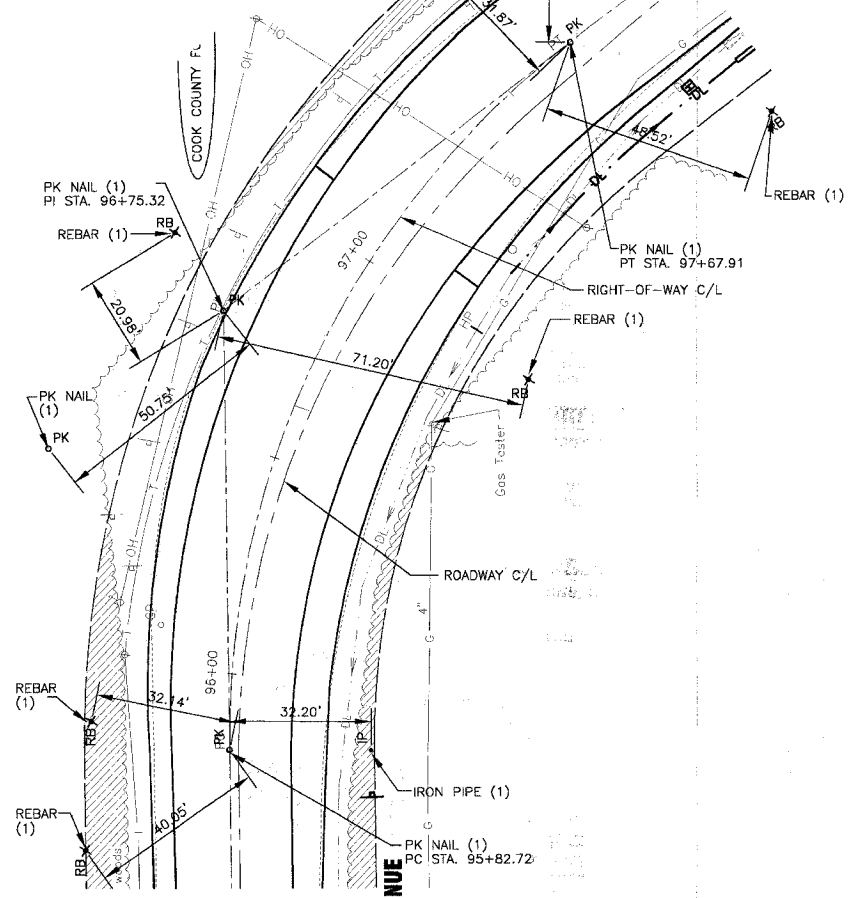
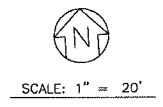
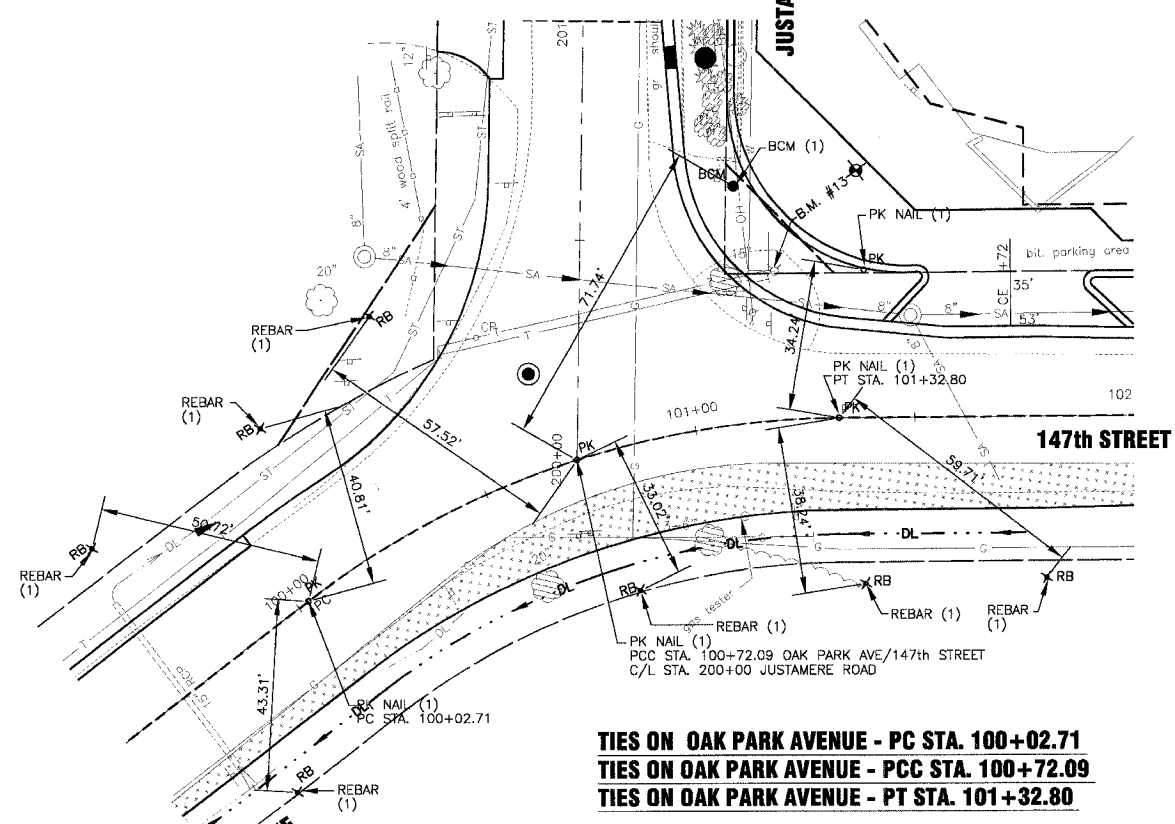
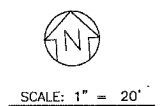


F.A.U. ROUTE NO.	SECTION	COUNTY	TOTAL SHEETS	SHEET NO.
2774	99-00073-00-WR	COOK	116	20
STA. TO STA.	FED. ROAD DIST. NO. 1		ILLINOIS	
	FED. AID PROJECT		CMM-7003 (750)	
CONTRACT NO. 83727				

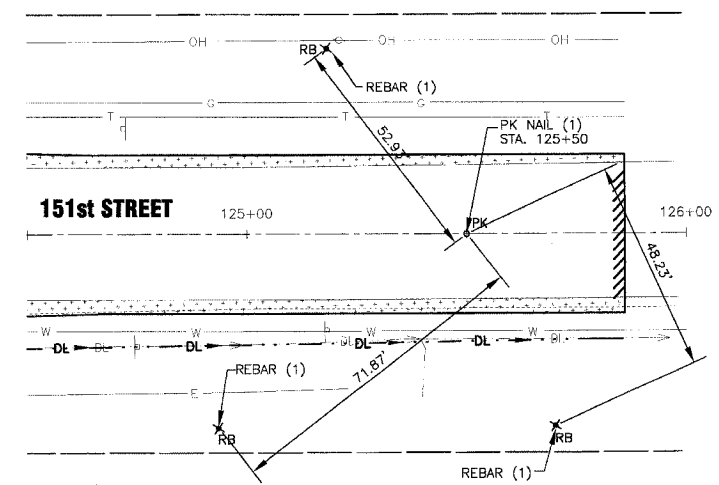
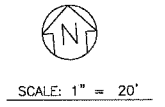


TIES ON OAK PARK AVENUE - PC STA. 95+82.72
TIES ON OAK PARK AVENUE - PI STA. 96+75.32
TIES ON OAK PARK AVENUE - PT STA. 97+67.91

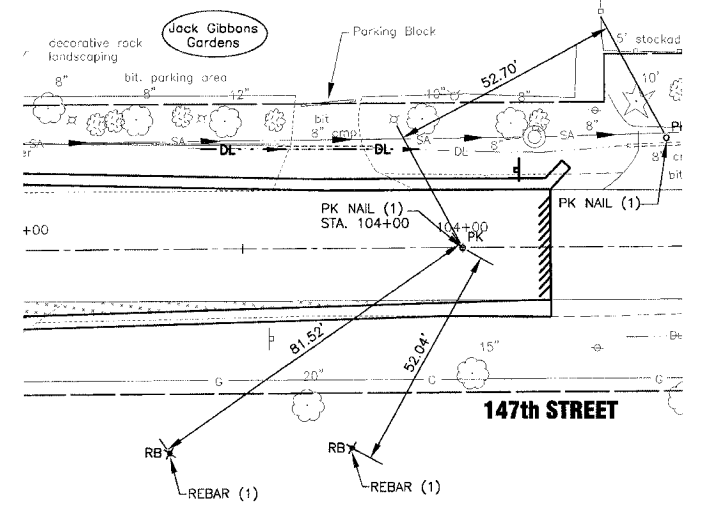
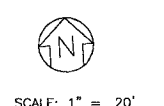
OAK PARK AVENUE



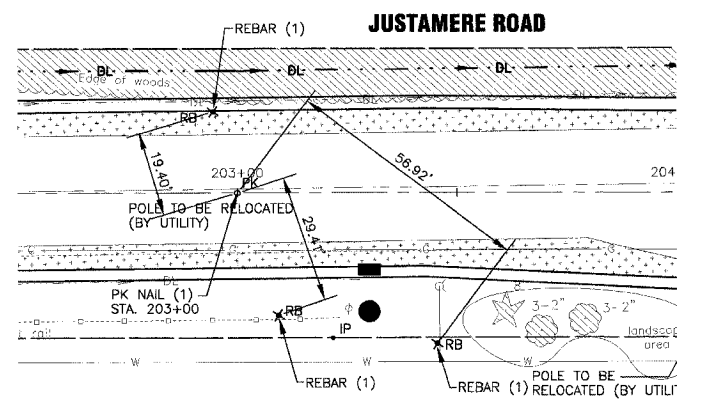
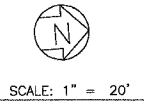
TIES ON OAK PARK AVENUE - PC STA. 100+02.71
TIES ON OAK PARK AVENUE - PCC STA. 100+72.09
TIES ON OAK PARK AVENUE - PT STA. 101+32.80



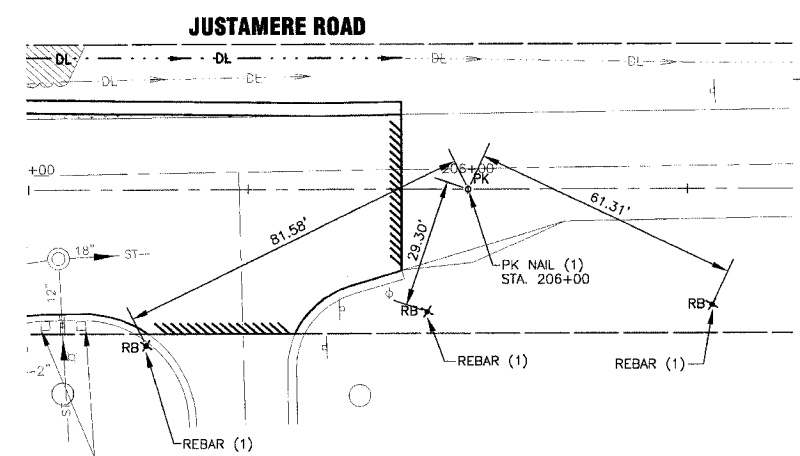
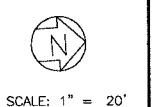
TIES ON 151st STREET - STA. 125+50



TIES ON 147th STREET - STA. 104+00



TIES ON JUSTAMERE ROAD - STA. 203+00



TIES ON JUSTAMERE ROAD - STA. 203+00

I:\2004\11\20\146\Drawings\20146-TIES.dwg
 Plotted: 4-27-06 @ 3:53pm By: 2311ub
 Copyright © 2004, by Baxter & Woodman, Inc.
 State of Illinois - Professional Design Firm
 License No. - 184-00112 - Expires 4-30-05

CONSULTANTS	REV. NO.	DATE	DESCRIPTION
	1	4-28-06	PER DOT AND COOK COUNTY COMMENTS

* - REFER TO EQUIPMENT MANUFACTURER'S SHOP DRAWINGS

BAKTER & WOODMAN
 Consulting Engineers

Baxter & Woodman
 Crystal Lake, Illinois 815.469.1260
 Burlington, Wisconsin 262.763.7834
 Mokena, Illinois 708.478.2090
 DeKalb, Illinois 815.787.3111
 Graylake, Illinois 847.283.5088
 Rockford, Illinois 815.489.1551
 Plainfield, Illinois 815.609.7425

CITY OF OAK FOREST, ILLINOIS
OAK PARK AVENUE PROJECT

OAK PARK AVENUE - 147th STREET
JUSTAMERE ROAD AND 151st STREET
ALIGNMENT AND TIES

DESIGNED BY	NJP	SCALE	HORIZ: 1"=20'
DRAWN BY	UKB	PROJECT NO.	020146
CHECKED BY	LDH	SHEET NO.	20 OF 116
DATE	1-20-05		