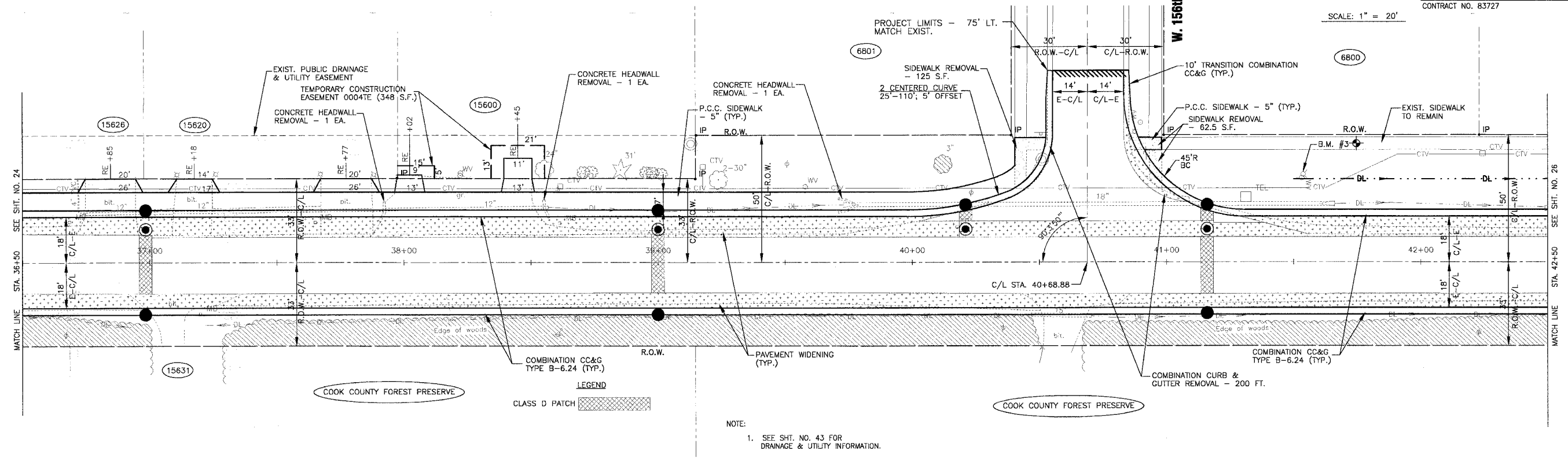


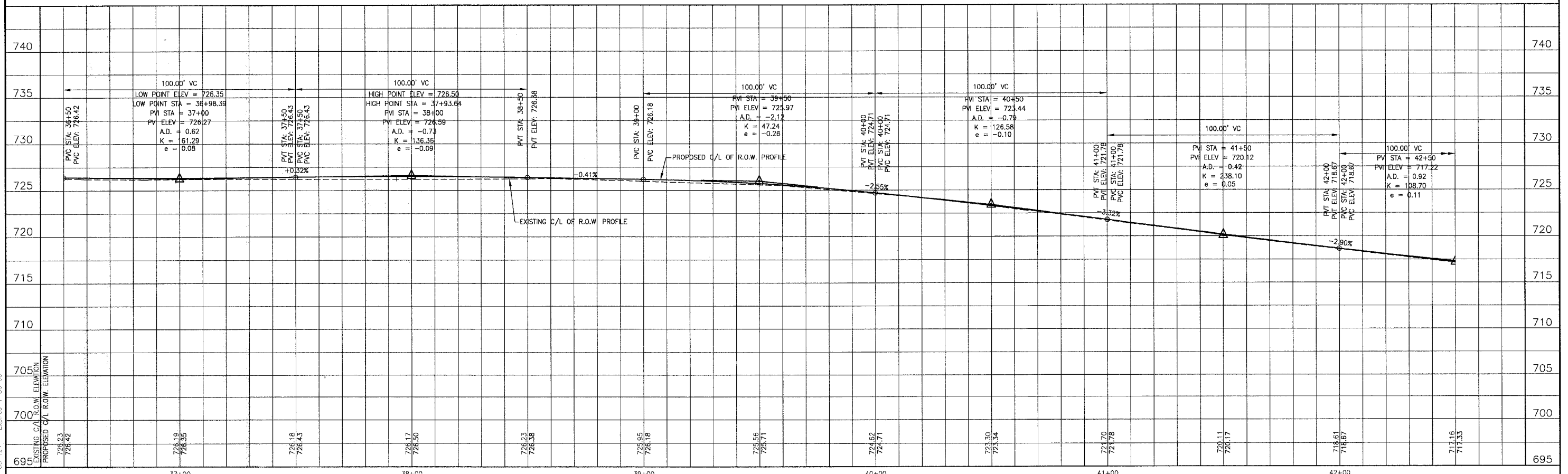


SCALE: 1" = 20'



### OAK PARK AVENUE

NOTE:  
1. SEE SHT. NO. 43 FOR DRAINAGE & UTILITY INFORMATION.



\D:\AKT\20146\Drawings\20146-OPRK-GRF.dwg  
 Plotted: 4/27/05 @ 2:43pm By: 231luc  
 Copyright © 2004, By Baxter & Woodman, Inc.  
 State of Illinois - Professional Design Firm  
 License No. - 181-001121 - Expires 4/30/05

REV. NO.	DATE	DESCRIPTION
1	4-28-06	PER DOT AND COOK COUNTY COMMENTS

\* - REFER TO EQUIPMENT MANUFACTURER'S SHOP DRAWINGS

**BAKTER & WOODMAN**  
 Consulting Engineers  
 Crystal Lake, Illinois 815.458.1260  
 Burlington, Wisconsin 262.763.7834  
 Mokena, Illinois 708.478.2090  
 DeKalb, Illinois 815.787.3111  
 Crystal Lake, Illinois 847.233.5088  
 Rockford, Illinois 815.489.1551  
 Plainfield, Illinois 815.609.7425

**CITY OF OAK FOREST, ILLINOIS**  
**OAK PARK AVENUE PROJECT**

**OAK PARK AVENUE**  
**STA. 36+50 TO STA. 42+50**  
**GEOMETRIC PLAN**

DESIGNED BY: NJP  
 DRAWN BY: UKB  
 CHECKED BY: NJP  
 DATE: 1-20-05

SCALE: VERT: 1"=5'  
 HORIZ: 1"=20'

PROJECT NO.: 020146  
 SHEET NO.: 25 OF 116