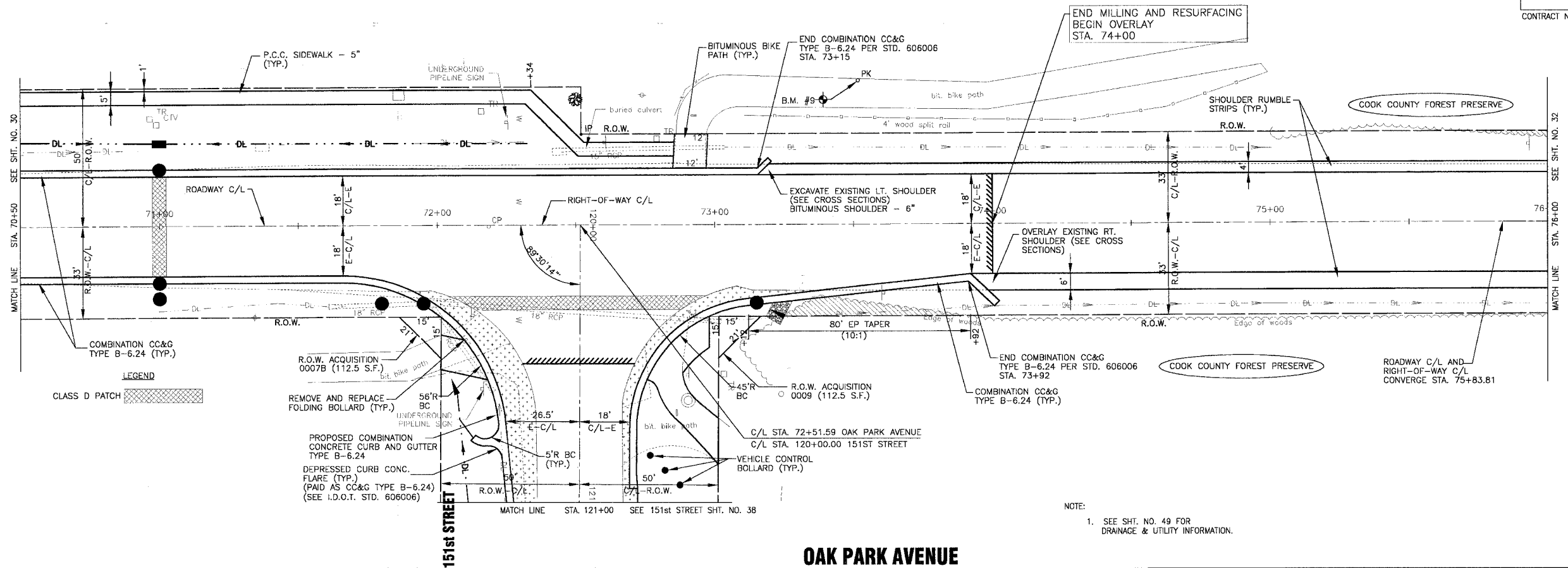


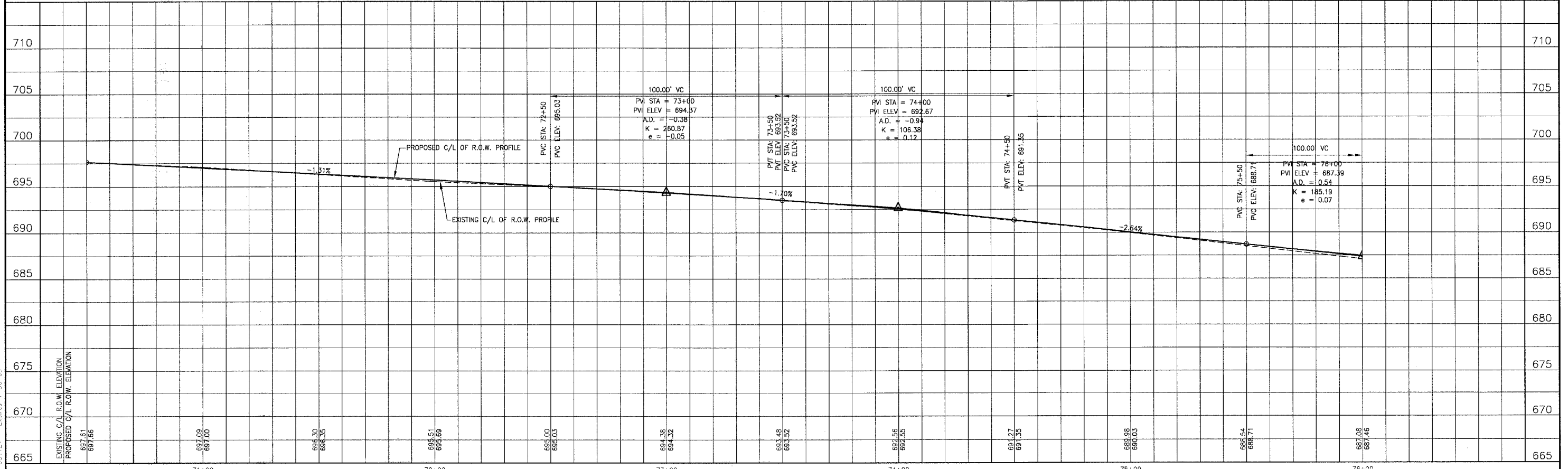


SCALE: 1" = 20'



NOTE:  
1. SEE SHT. NO. 49 FOR DRAINAGE & UTILITY INFORMATION.

**OAK PARK AVENUE**



I:\CAK\2004\Drawings\20146 - OPHK - 0398.dwg  
 Plotter: 4-27-06 @ 2:59pm By: 231jdo  
 Copyright © 2004, by Baxter & Woodman, Inc.  
 State of Illinois - Professional Design Firm  
 License No. - 184-001121 - Expires 4-30-05

CONSULTANTS	REV. NO.	DATE	DESCRIPTION
	1	4-28-06	PER IDOT AND COOK COUNTY COMMENTS

\* - REFER TO EQUIPMENT MANUFACTURER'S SHOP DRAWINGS

**Baxter & Woodman**  
 Crystal Lake, Illinois 815.439.1260  
 Burlington, Wisconsin 262.763.7834  
 Mokena, Illinois 708.478.2090  
 DeKalb, Illinois 815.787.3111  
 Graylake, Illinois 815.253.5088  
 Rockford, Illinois 815.488.1551  
 Plainfield, Illinois 815.609.7485

**CITY OF OAK FOREST, ILLINOIS**  
**OAK PARK AVENUE PROJECT**

**OAK PARK AVENUE**  
**STA. 70+50 TO STA. 76+00**  
**GEOMETRIC PLAN**

DESIGNED BY NJP	SCALE VERT: 1"=5'
DRAWN BY LKB	HORIZ: 1"=20'
CHECKED BY NJP	PROJECT NO. 020146
DATE 1-20-05	SHEET NO. 31 OF 116