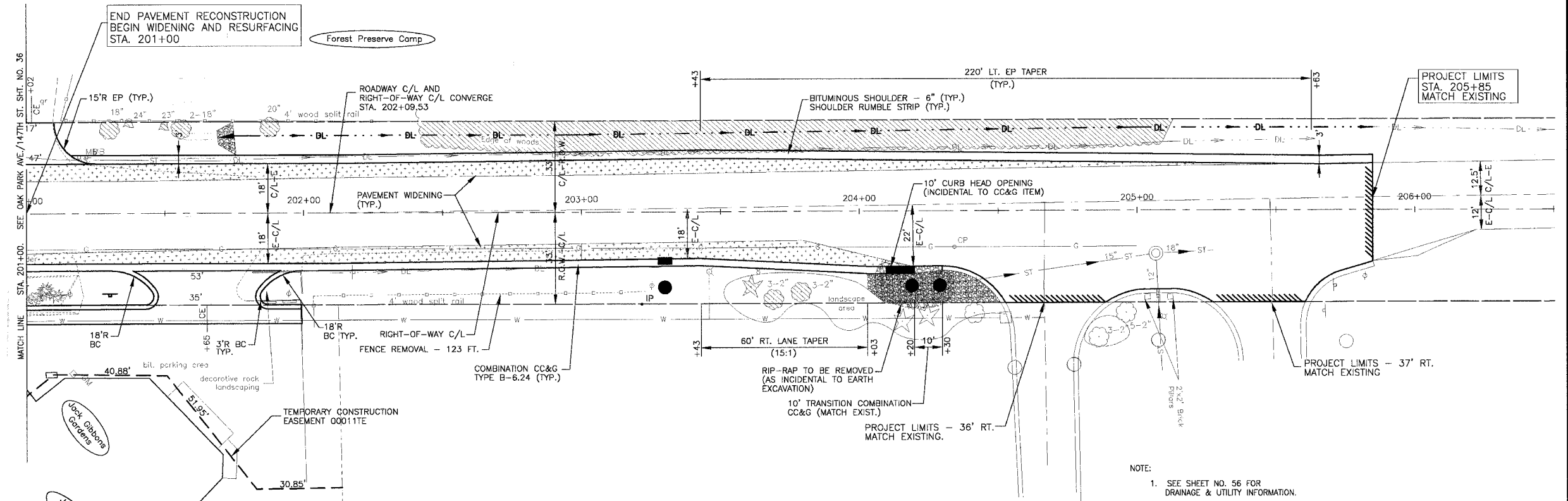
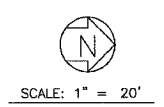
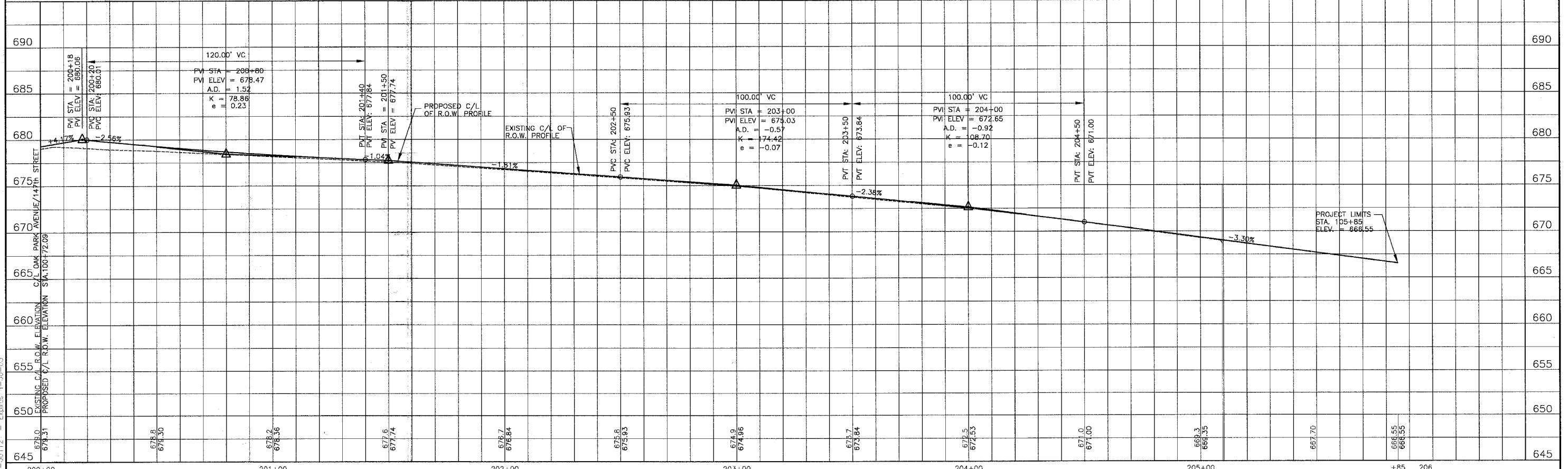


F.A.U. ROUTE NO.	SECTION	COUNTY	TOTAL SHEETS	SHEET NO.
2774	99-00073-00-WR	COOK	116	38
STA. TO STA.	FED. ROAD DIST. NO. 1		FED. AID PROJECT	
	ILLINOIS		CMM-7003 (750)	
CONTRACT NO. 83727				



NOTE:
1. SEE SHEET NO. 56 FOR DRAINAGE & UTILITY INFORMATION.

JUSTAMERE ROAD



I:\OAKFT\020114\EN\Drawings\JUSTMER - 511.dwg
 4/29/06 11:50 AM By: JLB
 Copyright © 2004 By: Baxter & Woodman, Inc.
 State of Illinois - Professional Design Firm
 License No. - 184-00112 - Expires 4-30-05

CONSULTANT'S	REV. NO.	DATE	DESCRIPTION
	1	4-28-06	PER IDOT AND COOK COUNTY COMMENTS

REFER TO EQUIPMENT MANUFACTURER'S SHOP DRAWINGS

BAXTER & WOODMAN
Consulting Engineers

Baxter & Woodman
Crystal Lake, Illinois 815.459.1800
Burlington, Wisconsin 262.793.7834
Mokena, Illinois 708.478.2090
DeKalb, Illinois 815.787.3111
Grapeville, Illinois 247.223.5088
Rockford, Illinois 815.489.1531
Plainfield, Illinois 815.609.7425

CITY OF OAK FOREST, ILLINOIS
OAK PARK AVENUE PROJECT

JUSTAMERE ROAD
STA. 200+00 TO STA. 205+85
GEOMETRIC PLAN

DESIGNED BY NJP	SCALE VERT: 1"=5' HORIZ: 1"=20'
DRAWN BY UKB	PROJECT NO. 020146
CHECKED BY NJP	SHEET NO.
DATE 1-20-05	38 OF 116