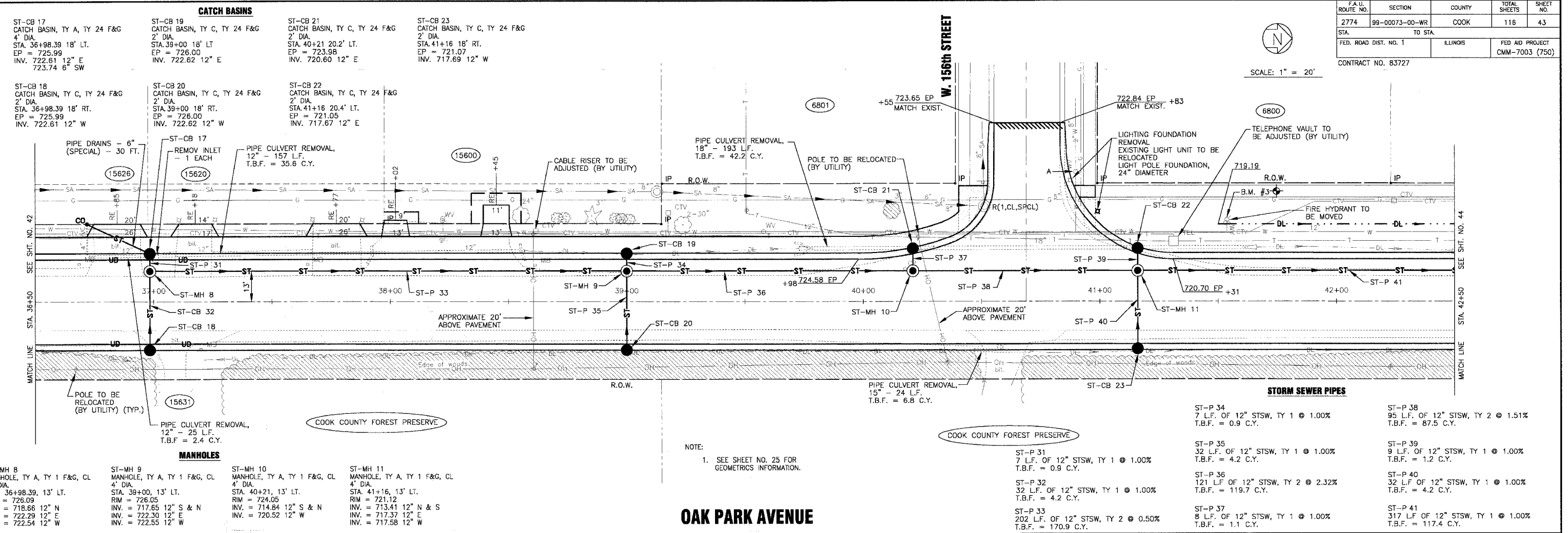


F.A.U. ROUTE NO.	SECTION	COUNTY	TOTAL SHEETS	SHEET NO.
2774	99-00073-00-WR	COOK	116	43
STA.	TO STA.			
FED. ROAD DIST. NO. 1	ILLINOIS	FED AID PROJECT		
		CMM-7003 (750)		
CONTRACT NO. 83727				



SCALE: 1" = 20'

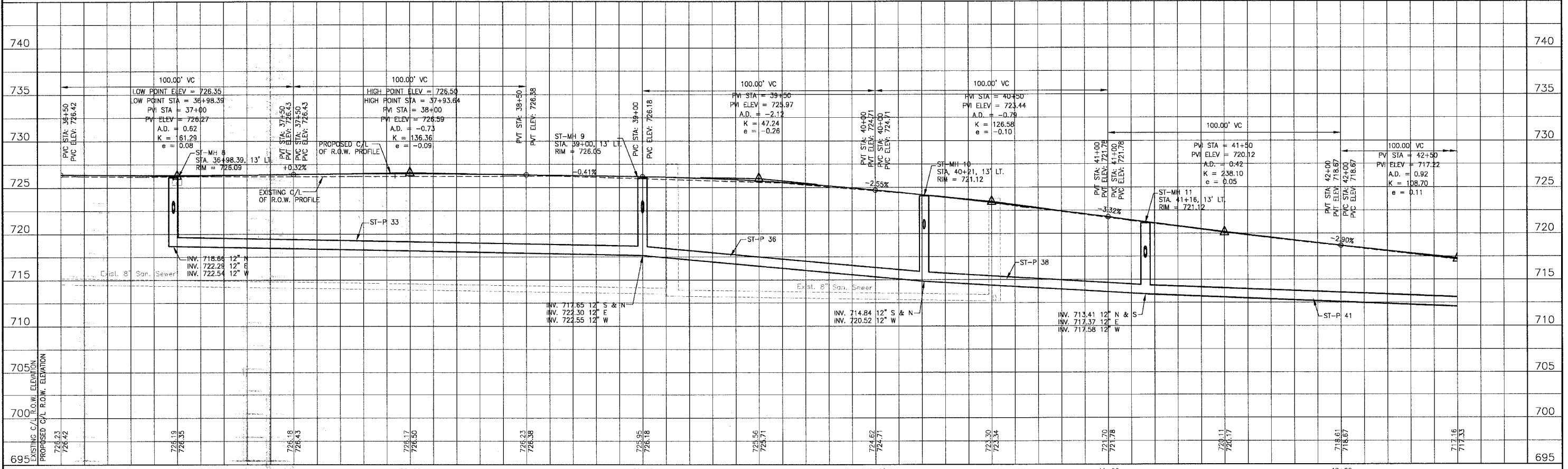


**MANHOLES**

ST-MH 8 MANHOLE, TY A, TY 1 F&G, CL 4' DIA. STA. 36+98.39, 13' LT. RIM = 726.09 INV. = 718.66 12" N INV. = 722.29 12" E INV. = 722.54 12" W	ST-MH 9 MANHOLE, TY A, TY 1 F&G, CL 4' DIA. STA. 39+00, 13' LT. RIM = 726.05 INV. = 717.65 12" S & N INV. = 722.30 12" E INV. = 722.55 12" W	ST-MH 10 MANHOLE, TY A, TY 1 F&G, CL 4' DIA. STA. 40+21, 13' LT. RIM = 724.05 INV. = 714.84 12" S & N INV. = 720.52 12" W	ST-MH 11 MANHOLE, TY A, TY 1 F&G, CL 4' DIA. STA. 41+16, 13' LT. RIM = 721.12 INV. = 713.41 12" N & S INV. = 717.37 12" E INV. = 717.58 12" W
--	---	---	--

NOTE:  
1. SEE SHEET NO. 25 FOR GEOMETRICS INFORMATION.

ST-P 34 7 L.F. OF 12" STSW, TY 1 @ 1.00% T.B.F. = 0.9 C.Y.	ST-P 38 95 L.F. OF 12" STSW, TY 2 @ 1.51% T.B.F. = 87.5 C.Y.
ST-P 35 32 L.F. OF 12" STSW, TY 1 @ 1.00% T.B.F. = 4.2 C.Y.	ST-P 39 9 L.F. OF 12" STSW, TY 1 @ 1.00% T.B.F. = 1.2 C.Y.
ST-P 36 121 L.F. OF 12" STSW, TY 2 @ 2.32% T.B.F. = 119.7 C.Y.	ST-P 40 32 L.F. OF 12" STSW, TY 1 @ 1.00% T.B.F. = 4.2 C.Y.
ST-P 37 202 L.F. OF 12" STSW, TY 2 @ 0.50% T.B.F. = 170.9 C.Y.	ST-P 41 317 L.F. OF 12" STSW, TY 1 @ 1.00% T.B.F. = 117.4 C.Y.



CONSULTANTS	DESCRIPTION
1	28-06 PER IDOT AND COOK COUNTY COMMENTS

**BAXTER & WOODMAN**  
Consulting Engineers

**Baxter & Woodman**  
Crystal Lake, Illinois 815.459.1269  
Dartington, Wisconsin 262.783.7854  
Mokena, Illinois 708.478.2090  
DeKalb, Illinois 815.787.3111  
Grayslake, Illinois 847.223.5088  
Rockford, Illinois 815.499.3551  
Plainfield, Illinois 815.608.7425

**CITY OF OAK FOREST, ILLINOIS**  
**OAK PARK AVENUE PROJECT**

**OAK PARK AVENUE**  
**STA. 36+50 TO STA. 42+50**  
**DRAINAGE AND UTILITY PLAN**

DESIGNED BY: NJP  
DRAWN BY: TTY  
CHECKED BY: UKB  
DATE: 1-20-05

SCALE: VERT: 1"=5'  
HORIZ: 1"=20'

PROJECT NO.: 020146  
SHEET NO.: 43 OF 116

C:\land\Projects\2004\MOBILE-DWG\OAK\OAKPARK\20146-CIPR-117R.dwg  
 Filepath: 1/20/05 12:21 PM By: 231140  
 Copyright © 2004, By: Baxter & Woodman, Inc.  
 State of Illinois Professional Design Firm  
 License No.: 184-001121 - Expires 4-30-05