

ST-P 42  
8 L.F. OF 12" STSW, TY 1 @ 1.00%  
T.B.F. = 1.1 C.Y.

ST-P 43  
14 L.F. OF 15" STSW, TY 1, WATER MAIN QUALITY @ 1.50%

ST-P 44  
7 L.F. OF 18" STSW, TY 1 @ 1.00%  
T.B.F. = 0.7 C.Y.

ST-P 45  
32 L.F. OF 24"x38" RCEP, TY 1 @ 0.13%  
T.B.F. = 4.2 C.Y.

ST-P 46  
8 L.F. OF 12" STSW, TY 1 @ 1.00%  
T.B.F. = 1.1 C.Y.

ST-P 47  
5 L.F. OF 24"x38" STSW, TY 1 @ 0.40%

ST-P 48  
105 L.F. OF 12" STSW, TY 1 @ 0.50%  
T.B.F. = 14.4 C.Y.

ST-P 49  
8 L.F. OF 12" STSW, TY 1 @ 1.00%  
T.B.F. = 1.1 C.Y.

ST-P 50  
7 L.F. OF 12" STSW, TY 1 @ 1.00%  
T.B.F. = 0.9 C.Y.

ST-P 51  
32 L.F. OF 12" STSW, TY 1 @ 0.63%  
T.B.F. = 4.7 C.Y.

ST-P 51A  
45 L.F. OF 8" STSW, TY 1, WATER MAIN QUALITY @ 2.0%  
T.B.F. = 1.1 C.Y.

ST-P 51B  
67 L.F. OF 8" STSW, TY 1, WATER MAIN QUALITY @ 0.90%  
T.B.F. = 1.0 C.Y.

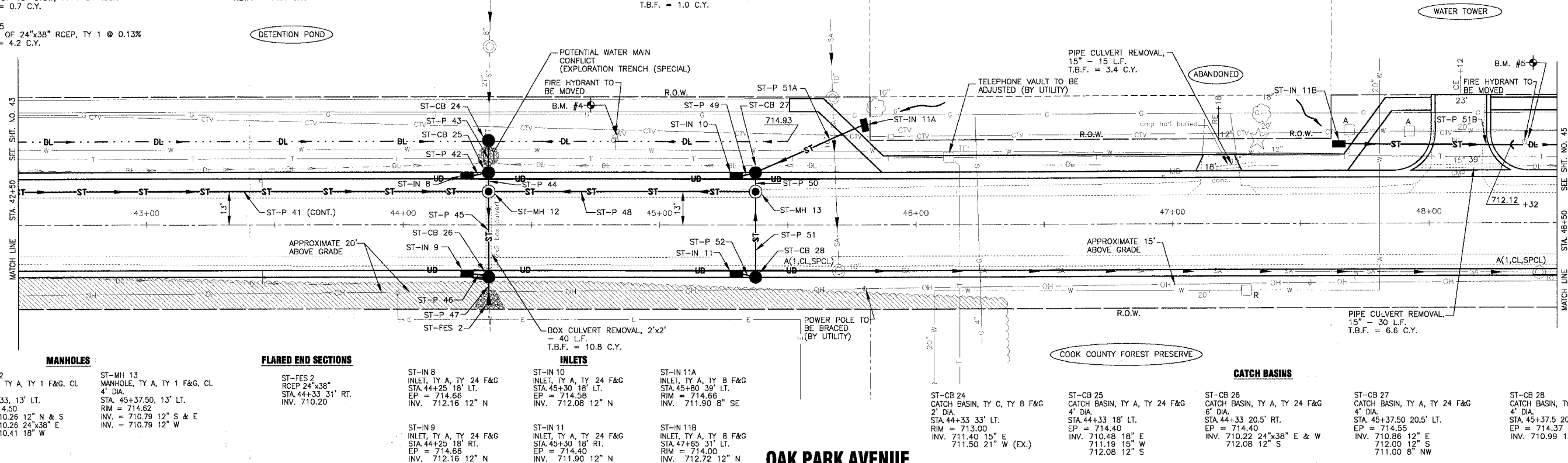
ST-P 52  
8 L.F. OF 12" STSW, TY 1 @ 1.00%  
T.B.F. = 1.1 C.Y.

NOTE:  
1. SEE SHEET NO. 26 FOR GEOMETRICS INFORMATION.



SCALE: 1" = 20'

F.A.U. ROUTE NO.	SECTION	COUNTY	TOTAL SHEETS	SHEET NO.
2774	99-00073-00-WR	COOK	116	44
FED. ROAD DIST. NO. 1		ILLINOIS		FED AID PROJECT CMM-7003 (750)
CONTRACT NO. 83727				



**MANHOLES**  
ST-MH 12  
MANHOLE, TY A, TY 1 F&G, CL  
6' DIA.  
STA. 44+33, 13' LT.  
RIM = 714.50  
INV. = 710.26 12" N & S  
INV. = 710.26 24"x38" E  
INV. = 710.41 18" W

ST-MH 13  
MANHOLE, TY A, TY 1 F&G, CL  
4' DIA.  
STA. 45+37.50, 13' LT.  
RIM = 714.62  
INV. = 710.79 12" S & E  
INV. = 710.79 12" W

**FLARED END SECTIONS**  
ST-FES 2  
RCEP 24"x38"  
STA. 44+33 31' RT.  
INV. 710.20

**INLETS**  
ST-IN 8  
INLET, TY A, TY 24 F&G  
STA. 44+25 18' LT.  
EP = 714.66  
INV. 712.16 12" N

ST-IN 9  
INLET, TY A, TY 24 F&G  
STA. 44+25 18' RT.  
EP = 714.66  
INV. 712.16 12" N

ST-IN 10  
INLET, TY A, TY 24 F&G  
STA. 45+30 18' LT.  
EP = 714.58  
INV. 712.08 12" N

ST-IN 11  
INLET, TY A, TY 24 F&G  
STA. 47+65 31' RT.  
EP = 714.40  
INV. 711.90 12" N

ST-IN 11A  
INLET, TY A, TY 8 F&G  
STA. 45+30 39' LT.  
RIM = 714.66  
INV. 711.90 8" SE

ST-IN 11B  
INLET, TY A, TY 8 F&G  
STA. 47+65 31' LT.  
RIM = 714.00  
INV. 712.72 12" N

**CATCH BASINS**  
ST-CB 24  
CATCH BASIN, TY C, TY 8 F&G  
2' DIA.  
STA. 44+33 33' LT.  
RIM = 713.00  
INV. 711.40 15" E  
711.50 21" W (EX.)

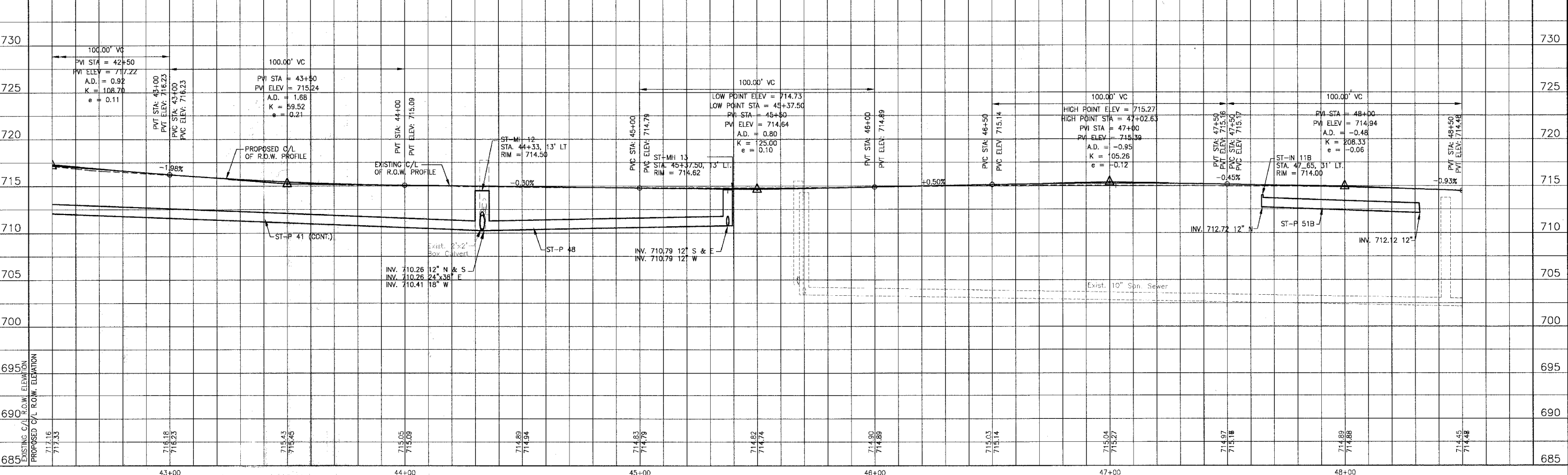
ST-CB 25  
CATCH BASIN, TY A, TY 24 F&G  
4' DIA.  
STA. 44+33 18' LT.  
EP = 714.40  
INV. 710.48 18" E  
711.19 15" W  
712.08 12" S

ST-CB 26  
CATCH BASIN, TY A, TY 24 F&G  
6' DIA.  
STA. 44+33 20.5' RT.  
EP = 714.40  
INV. 710.86 12" E  
712.00 12" S  
711.00 8" NW

ST-CB 27  
CATCH BASIN, TY A, TY 24 F&G  
4' DIA.  
STA. 45+37.50 20.5' RT.  
EP = 714.55  
INV. 710.86 12" E  
712.00 12" S  
711.00 8" NW

ST-CB 28  
CATCH BASIN, TY A, TY 24 F&G  
4' DIA.  
STA. 45+37.50 20.5' RT.  
EP = 714.37  
INV. 710.99 12" W

**OAK PARK AVENUE**



CONSULTANTS	REV	DESCRIPTION
BAXTER & WOODMAN	1	28-06 PER 100% AND COOK COUNTY COMMENTS

REV	DESCRIPTION
1	28-06 PER 100% AND COOK COUNTY COMMENTS

**BAXTER & WOODMAN**  
Consulting Engineers  
Crystal Lake, Illinois 815.459.1280  
Burlington, Wisconsin 262.763.7831  
Mokena, Illinois 708.478.2090  
Joliet, Illinois 815.787.3111  
Grayslake, Illinois 847.523.5088  
Rockford, Illinois 815.489.1651  
Plainfield, Illinois 815.609.7425

**CITY OF OAK FOREST, ILLINOIS**  
**OAK PARK AVENUE PROJECT**

**OAK PARK AVENUE**  
**STA. 42+50 TO STA. 48+50**  
**DRAINAGE AND UTILITY PLAN**

DESIGNED BY	SCALE	VERT: 1"=5'
NJP	HORIZ: 1"=20'	
DRAWN BY	PROJECT NO.	
UKB	020146	
CHECKED BY	SHEET NO.	
NJP		
DATE		
1-20-05		

C:\land Projects\2004\MOKEMA-DWGS\DWGS\020146\DWGS\20146-DRPF-DPF.dwg  
 Plotted: 4-26-06 @ 10:37pm By: 231lab  
 Copyright © 2004, by Baxter & Woodman, Inc.  
 State of Illinois Professional Engineer Firm  
 License No. 184-001121 - Expires 4-30-06