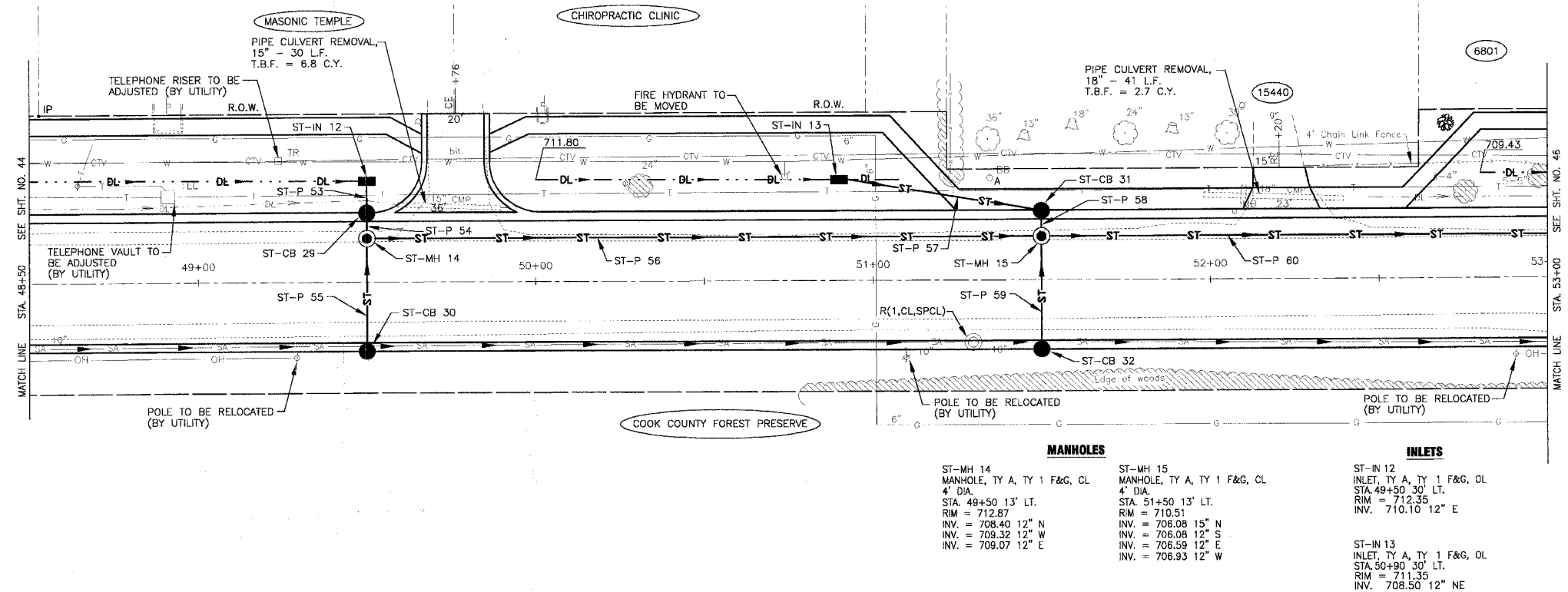


F.A.U. ROUTE NO.	SECTION	COUNTY	TOTAL SHEETS	SHEET NO.
2774	99-00073-00-WR	COOK	116	45
STA. TO STA.		ILLINOIS		FED AID PROJECT
FED. ROAD DIST. NO. 1				CMM-7003 (750)

CONTRACT NO. 83727

SCALE: 1" = 20'



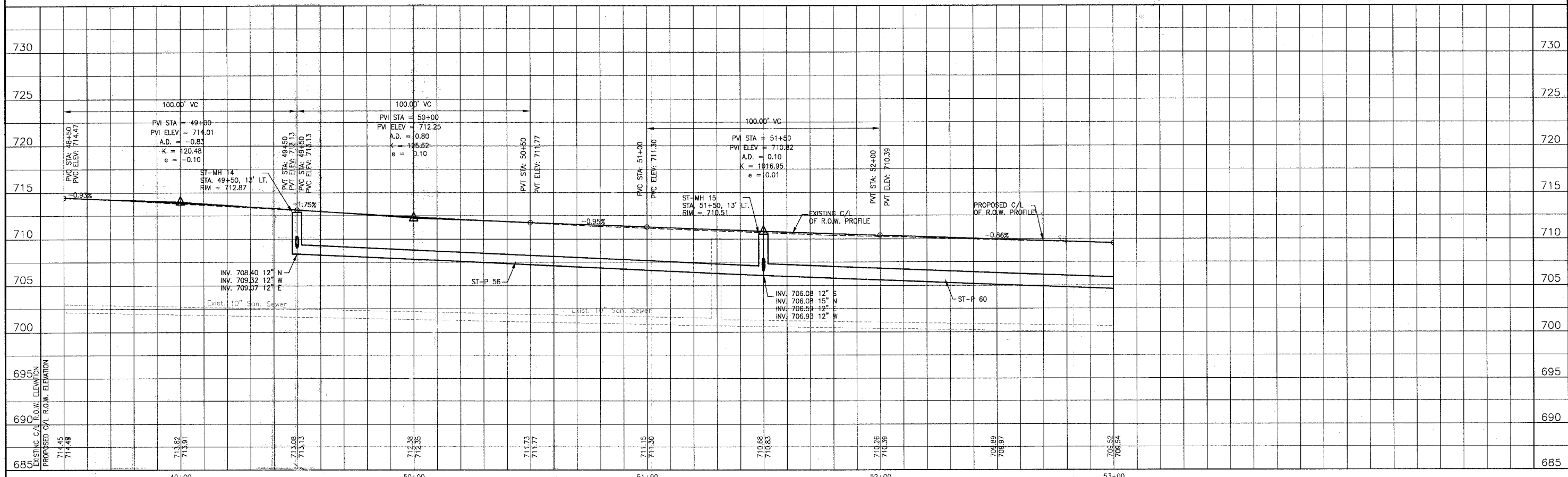
- CATCH BASINS**
- ST-CB 29: CATCH BASIN, TY A, TY 24 F&G, 4" DIA., STA. 49+50 18' LT., EP = 712.77, INV. 709.39 12" E & W
  - ST-CB 30: CATCH BASIN, TY C, TY 24 F&G, 2" DIA., STA. 49+50 18' RT., EP = 712.77, INV. 709.39 12" W
  - ST-CB 31: CATCH BASIN, TY C, TY 24 F&G, 2" DIA., STA. 51+50 18' LT., EP = 710.38, INV. 707.00 12" SW & E
  - ST-CB 32: CATCH BASIN, TY C, TY 24 F&G, 2" DIA., STA. 51+50 18' RT., EP = 710.29, INV. 706.91 12" W

- STORM SEWER PIPES**
- ST-P 53: 11 L.F. OF 12" STSW, TY 1 @ 1.00%, T.B.F. = 0.7 C.Y.
  - ST-P 54: 7 L.F. OF 12" STSW, TY 1 @ 1.00%, T.B.F. = 0.9 C.Y.
  - ST-P 55: 32 L.F. OF 12" STSW, TY 1 @ 1.00%, T.B.F. = 4.2 C.Y.
  - ST-P 56: 200 L.F. OF 12" STSW, TY 2 @ 1.16%, T.B.F. = 36.0 C.Y.
  - ST-P 57: 82 L.F. OF 12" STSW, TY 1 @ 1.00%, T.B.F. = 4.4 C.Y.
  - ST-P 58: 7 L.F. OF 12" STSW, TY 1 @ 1.00%, T.B.F. = 0.9 C.Y.
  - ST-P 59: 32 L.F. OF 12" STSW, TY 1 @ 1.00%, T.B.F. = 4.2 C.Y.
  - ST-P 60: 234 L.F. OF 15" STSW, TY 2 @ 0.98%, T.B.F. = 46.1 C.Y.

- MANHOLES**
- ST-MH 14: MANHOLE, TY A, TY 1 F&G, CL, 4" DIA., STA. 49+50 13' LT., RIM = 712.87, INV. = 708.40 12" N, INV. = 708.32 12" W, INV. = 709.07 12" E
  - ST-MH 15: MANHOLE, TY A, TY 1 F&G, CL, 4" DIA., STA. 51+50 13' LT., RIM = 710.51, INV. = 706.08 15" N, INV. = 706.08 12" S, INV. = 706.59 12" E, INV. = 706.93 12" W
- INLETS**
- ST-IN 12: INLET, TY A, TY 1 F&G, OL, STA. 49+50 30' LT., RIM = 712.35, INV. = 710.10 12" E
  - ST-IN 13: INLET, TY A, TY 1 F&G, OL, STA. 50+90 30' LT., RIM = 711.35, INV. = 708.50 12" NE

NOTE:  
1. SEE SHEET NO. 27 FOR GEOMETRICS INFORMATION.

**OAK PARK AVENUE**



CA and Projects 2004 \WORK\DWG\DAK\1\201146\DWG\20146-04R1-DRFT.dwg  
 Date: 4-28-05 @ 1:33pm By: 23tkb  
 Copyright © 2004, by Baxter & Woodman, Inc.  
 State of Illinois Professional Designation: 410  
 License No.: 104-001211- Expires 4-30-05

<p>CONSULTANTS</p> <p>REV. NO. 1</p> <p>DESCRIPTION: DOT AND COOK COUNTY COMMENTS</p>		<p><b>Baxter &amp; Woodman</b>          Crystal Lake, Illinois 815.458.1260          Burlington, Wisconsin 262.763.7884          Mukwonago, Illinois 708.478.2090          DeKalb, Illinois 815.787.3111          Joppleville, Illinois 847.283.8088          Rockford, Illinois 815.406.1551          Plainfield, Illinois 815.609.7425</p>		<p><b>CITY OF OAK FOREST, ILLINOIS</b></p> <p><b>OAK PARK AVENUE PROJECT</b></p>		<p><b>OAK PARK AVENUE</b></p> <p><b>STA. 48+50 TO STA. 53+00</b></p> <p><b>DRAINAGE AND UTILITY PLAN</b></p>		<p>DESIGNED BY: NJP</p> <p>DRAWN BY: UKB</p> <p>CHECKED BY: NJP</p> <p>DATE: 1-20-05</p> <p>SCALE: VERT: 1"=5' HORIZ: 1"=20'</p> <p>PROJECT NO.: 020146</p> <p>SHEET NO.: 45 OF 116</p>	
---	--	--	--	--	--	--	--	---	--