

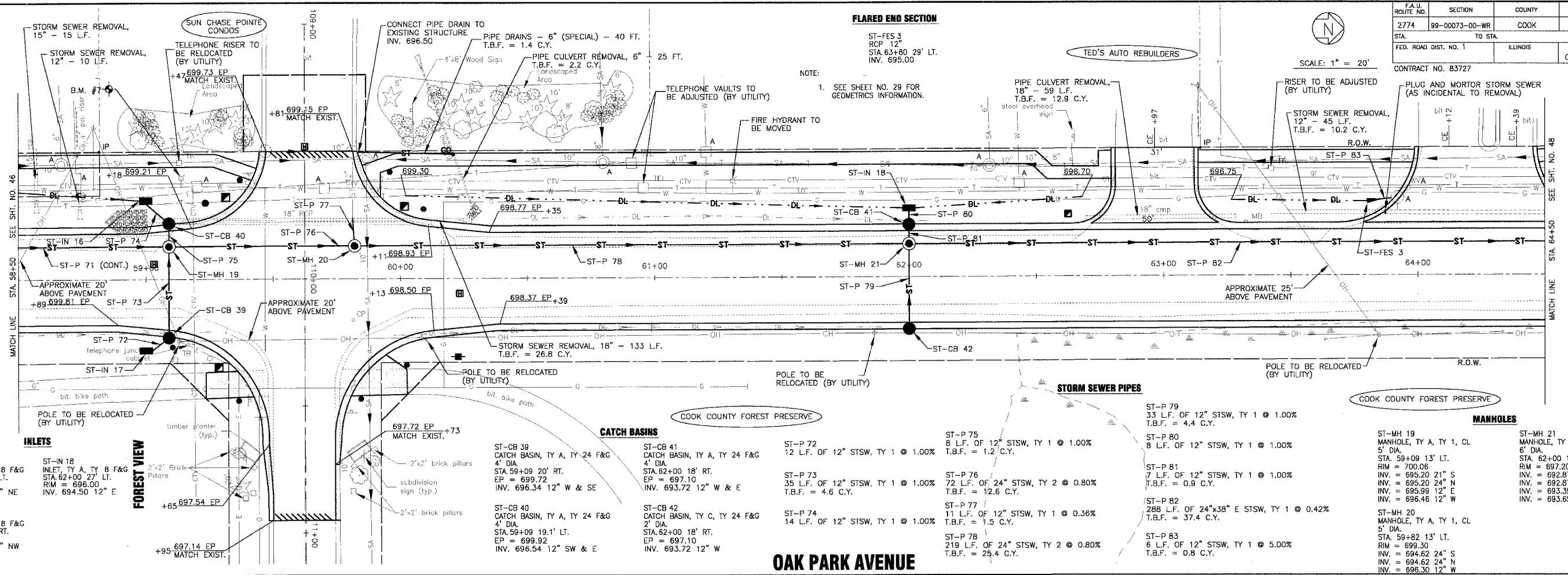


SCALE: 1" = 20'

FLARED END SECTION

ST-FES 3
RCP 12"
STA. 63+80 29' LT.
INV. 695.00

NOTE:
1. SEE SHEET NO. 29 FOR GEOMETRICS INFORMATION.



INLETS

ST-IN 16
INLET, TY A, TY B F&G
STA. 59+00 31' LT.
RIM = 698.45
INV. 696.95 12" NE

ST-IN 17
INLET, TY A, TY B F&G
STA. 59+00 28' RT.
RIM = 698.00
INV. 696.50 12" NW

ST-IN 18
INLET, TY A, TY B F&G
STA. 62+00 27' LT.
RIM = 696.00
INV. 694.50 12" E

FOREST VIEW

2"x2" Brick Pillars
+65 697.54 EP
+95 697.14 EP MATCH EXIST.

CATCH BASINS

ST-CB 39
CATCH BASIN, TY A, TY 24 F&G
4" DIA.
STA. 59+09 20' RT.
EP = 699.72
INV. 696.34 12" W & SE

ST-CB 40
CATCH BASIN, TY A, TY 24 F&G
4" DIA.
STA. 59+09 19.1' LT.
EP = 699.92
INV. 696.54 12" SW & E

ST-CB 41
CATCH BASIN, TY A, TY 24 F&G
4" DIA.
STA. 62+00 18' RT.
EP = 697.10
INV. 693.72 12" W & E

ST-CB 42
CATCH BASIN, TY C, TY 24 F&G
2" DIA.
STA. 62+00 18' RT.
EP = 697.10
INV. 693.72 12" W

STORM SEWER PIPES

ST-P 72
12 L.F. OF 12" STSW, TY 1 @ 1.00%
T.B.F. = 4.4 C.Y.

ST-P 73
35 L.F. OF 12" STSW, TY 1 @ 1.00%
T.B.F. = 4.6 C.Y.

ST-P 74
14 L.F. OF 12" STSW, TY 1 @ 1.00%

ST-P 75
8 L.F. OF 12" STSW, TY 1 @ 1.00%
T.B.F. = 1.2 C.Y.

ST-P 76
72 L.F. OF 24" STSW, TY 2 @ 0.80%
T.B.F. = 12.6 C.Y.

ST-P 77
11 L.F. OF 12" STSW, TY 1 @ 0.36%
T.B.F. = 1.5 C.Y.

ST-P 78
219 L.F. OF 24" STSW, TY 2 @ 0.80%
T.B.F. = 25.4 C.Y.

ST-P 79
33 L.F. OF 12" STSW, TY 1 @ 1.00%
T.B.F. = 4.4 C.Y.

ST-P 80
8 L.F. OF 12" STSW, TY 1 @ 1.00%

ST-P 81
7 L.F. OF 12" STSW, TY 1 @ 1.00%
T.B.F. = 0.9 C.Y.

ST-P 82
288 L.F. OF 24"x38" E STSW, TY 1 @ 0.42%
T.B.F. = 37.4 C.Y.

ST-P 83
6 L.F. OF 12" STSW, TY 1 @ 5.00%
T.B.F. = 0.8 C.Y.

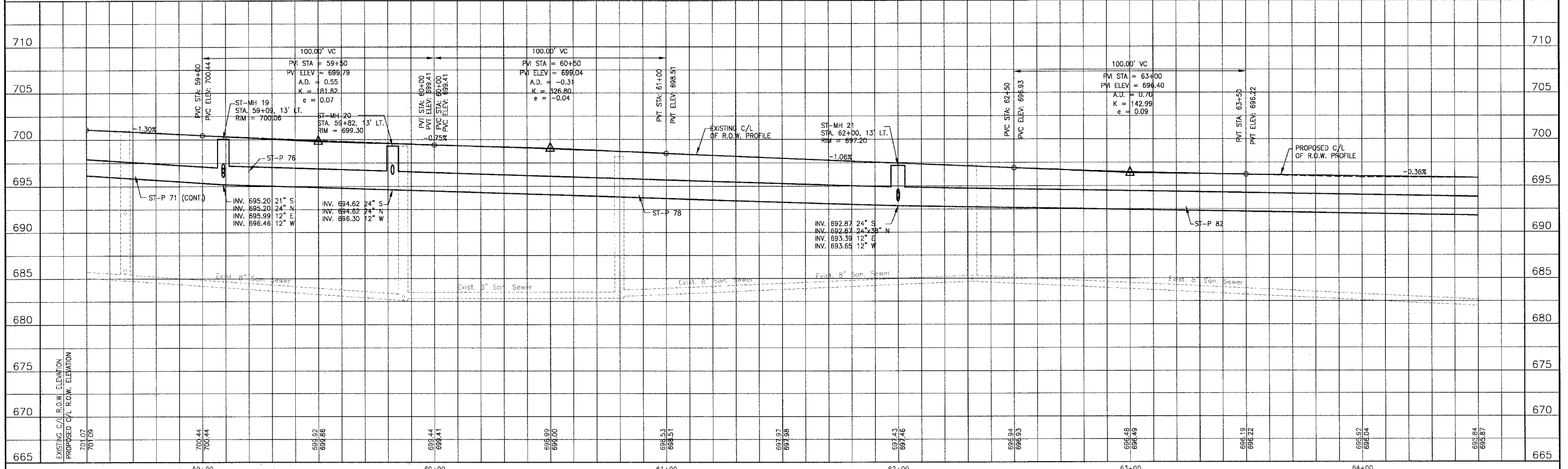
MANHOLES

ST-MH 19
MANHOLE, TY A, TY 1, CL
5" DIA.
STA. 59+09 13' LT.
RIM = 700.06
INV. = 695.20 21" S
INV. = 695.20 24" N
INV. = 695.99 12" E
INV. = 696.46 12" W

ST-MH 20
MANHOLE, TY A, TY 1, CL
5" DIA.
STA. 59+82 13' LT.
RIM = 699.30
INV. = 694.62 24" S
INV. = 694.62 24" N
INV. = 696.30 12" W

ST-MH 21
MANHOLE, TY A, TY 1 F&G, CL
6" DIA.
STA. 62+00 13' LT.
RIM = 697.20
INV. = 692.87 24" S
INV. = 693.39 12" E
INV. = 693.65 12" W

OAK PARK AVENUE



CONSULTANTS
REV. NO. DATE DESCRIPTION
1 4-28-06 PER IDOT AND COOK COUNTY COMMENTS

REV. NO.	DATE	DESCRIPTION
1	4-28-06	PER IDOT AND COOK COUNTY COMMENTS

BAKTER & WOODMAN
Consulting Engineers

Barter & Woodman
Crystal Lake, Illinois 815.489.1260
Burlington, Wisconsin 262.769.7834
Mokena, Illinois 708.478.2090
DeKalb, Illinois 815.787.3111
Crested Butte, Illinois 847.223.6086
Rockford, Illinois 815.489.1551
Plainfield, Illinois 815.609.7425

CITY OF OAK FOREST, ILLINOIS
OAK PARK AVENUE PROJECT

OAK PARK AVENUE
STA. 58+50 TO STA. 64+50
DRAINAGE AND UTILITY PLAN

DESIGNED BY NJP	SCALE VERT: 1"=5' HORIZ: 1"=20'
DRAWN BY UKB	PROJECT NO. 020146
CHECKED BY NJP	SHEET NO. 47 OF 116
DATE 1-20-05	

\\OAKF01\020146\Draws\20146-07R1-DRF.dwg
Plotted: 4-30-06 @ 8:25pm By: 23lub
Copyright © 2004, By: Barter & Woodman, Inc.
Scale of Illinois Professional Design Firm
License No. - 184-00121 - Expires 1-30-05