

MANHOLES

ST-MH 22
MANHOLE, TY A, TY 1, CL
6" DIA.
STA. 64+88 13' LT.
RIM = 695.34
INV. = 691.61 24"x38" N & S
INV. = 691.61 12" E
INV. = 691.63 12" W

ST-MH 23
MANHOLE, TY A, TY 1 F&G, CL
6" DIA.
STA. 66+00.7 13' LT.
RIM = 695.16
INV. = 691.38 24"x38" E & S
INV. = 691.95 15" N
INV. = 691.45 12" W

ST-MH 24
MANHOLE, TY A, TY 1 F&G, CL
4" DIA.
STA. 67+55 13' LT.
RIM = 695.75
INV. = 692.75 15" S
INV. = 692.75 12" E & W

INLETS

ST-IN 19
INLET, TY A, TY 8 F&G
STA. 64+88 27' LT.
RIM = 695.00
INV. = 693.50 12" E

ST-IN 20
INLET, TY A, TY 8 F&G
STA. 66+00.7 27' LT.
RIM = 694.50
INV. = 692.64 12" E

ST-IN 21
INLET, TY A, TY 8 F&G
STA. 67+80 30' LT.
RIM = 695.30
INV. = 693.42 12" SE

FLARED END SECTION

ST-FES 4
RCEP 24"x38"
STA. 66+00.70
INV. 691.10

CATCH BASINS

ST-CB 43
CATCH BASIN, TY A, TY 24 F&G
4" DIA.
STA. 64+88 18' LT.
EP = 695.19
INV. 691.81 12" W & E

ST-CB 44
CATCH BASIN, TY C, TY 24 F&G
2" DIA.
STA. 64+88 18' RT.
EP = 695.19
INV. 691.81 12" W

ST-CB 45
CATCH BASIN, TY A, TY 24 F&G
4" DIA.
STA. 66+00.7 18' LT.
EP = 695.06
INV. 691.68 12" W & E

ST-CB 46
CATCH BASIN, TY A, TY 24 F&G
6" DIA.
STA. 66+00.7 18' RT.
EP = 694.88
INV. 691.15 24"x38" W & E

ST-CB 47
CATCH BASIN, TY A, TY 24 F&G
4" DIA.
STA. 67+55 18' LT.
EP = 695.65
INV. 692.98 12" NW & E

ST-CB 48
CATCH BASIN, TY C, TY 24 F&G
2" DIA.
STA. 67+55 18' RT.
EP = 695.47
INV. 692.92 12" W

STORM SEWER PIPES

ST-P 84
8 L.F. OF 12" STSW, TY 1 @ 10.13%

ST-P 85
7 L.F. OF 12" STSW, TY 1 @ 2.57%
T.B.F. = 0.9 C.Y.

ST-P 86
33 L.F. OF 12" STSW, TY 1 @ 0.61%
T.B.F. = 4.4 C.Y.

ST-P 87
113 L.F. OF 24"x38" E STSW, TY 1 @ 0.27%
T.B.F. = 14.7 C.Y.

ST-P 88
8 L.F. OF 12" STSW, TY 1 @ 1.00%

ST-P 89
7 L.F. OF 12" STSW, TY 1 @ 3.29%
T.B.F. = 0.9 C.Y.

ST-P 90
33 L.F. OF 24"x38" E STSW, TY 1 @ 0.64%
T.B.F. = 4.3 C.Y.

ST-P 91
5 L.F. OF 24"x38" E STSW, TY 1 @ 0.46%
T.B.F. = 4.4 C.Y.

ST-P 92
154 L.F. OF 15" STSW, TY 1 @ 0.52%
T.B.F. = 18.6 C.Y.

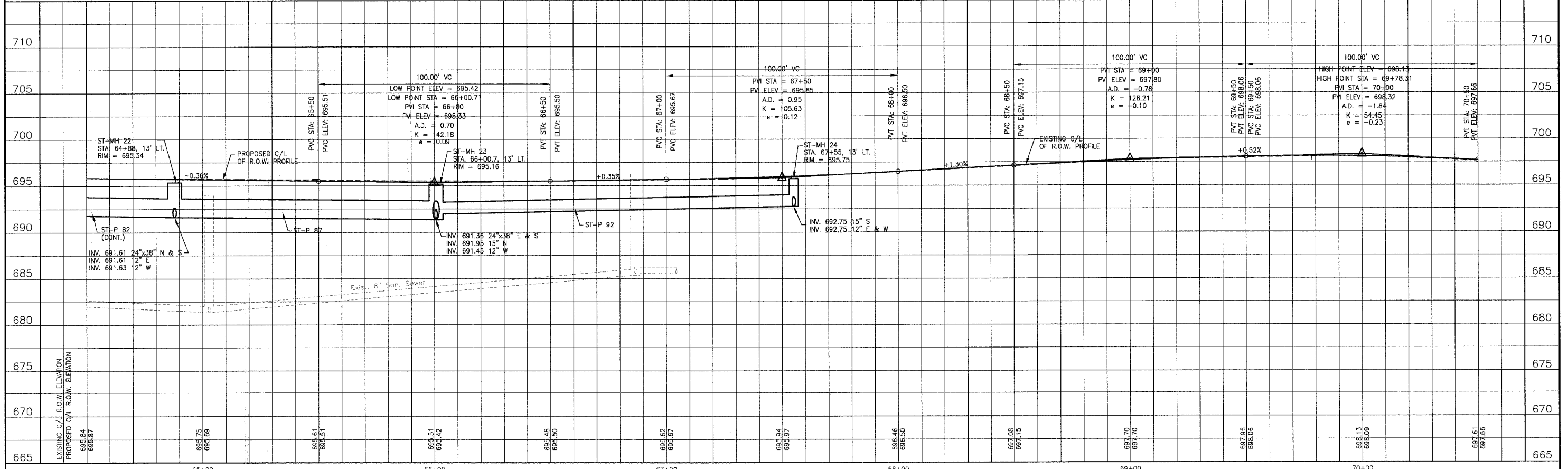
ST-P 93
27 L.F. OF 12" STSW, TY 1 @ 1.00%
T.B.F. = 1.3 C.Y.

ST-P 94
7 L.F. OF 12" STSW, TY 1 @ 3.29%
T.B.F. = 0.9 C.Y.

ST-P 95
33 L.F. OF 12" STSW, TY 1 @ 0.50%
T.B.F. = 4.4 C.Y.

NOTE:
1. SEE SHEET NO. 30 FOR GEOMETRICS INFORMATION.

OAK PARK AVENUE



CONSULTANTS	REV. NO.	DATE	DESCRIPTION
BAXTER & WOODMAN Consulting Engineers	1	4-28-06	PER IDOT AND COOK COUNTY COMMENTS

DESIGNED BY	SCALE	VERT. 1"=5'	HORIZ. 1"=20'
NJP	AS SHOWN		
DRAWN BY	PROJECT NO.		
UKB	020146		
CHECKED BY	SHEET NO.		
NJP	48 OF 116		
DATE	1-20-05		

CITY OF OAK FOREST, ILLINOIS
OAK PARK AVENUE PROJECT

Baxter & Woodman
Crystal Lake, Illinois 815.458.1260
Burlington, Wisconsin 262.763.7834
Mokena, Illinois 708.478.2090
DeKalb, Illinois 815.787.3111
Crestwood, Illinois 847.233.5088
Rockford, Illinois 815.488.1551
Plainfield, Illinois 815.609.7425

OAK PARK AVENUE
STA. 64+50 TO STA. 70+50
DRAINAGE AND UTILITY PLAN

48 OF 116

C:\Land Projects\2004\MOCKUP-DWG\OAK_PARK_AVENUE\DWG\20746-OPR-DRAW.dwg
 Plotted: 4-29-06 @ 3:49pm By: 237jlb
 Copyright © 2004, by Baxter & Woodman, Inc.
 State of Illinois Professional Registration Firm
 License No. - 184-001121 - Expires 1-30-05