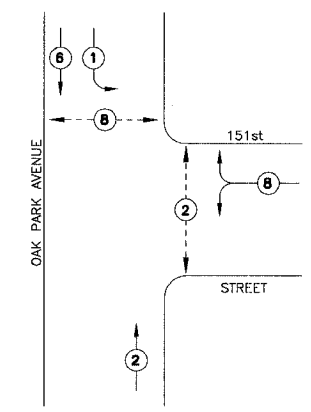


F.A.P. ROUTE NO.	SECTION	COUNTY	TOTAL SHEETS	SHEET NO.
2774	99-00073-DD-WR	COOK	116	77
STA.	TO STA.		ILLINOIS	FED AID PROJECT
FED. ROAD DIST. NO. 1				CMM-7003 (750)
CONTRACT NO. 83727				

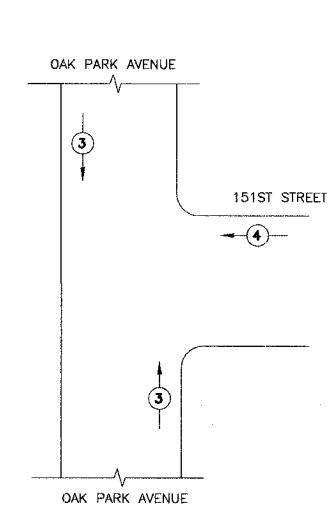
CABLE PLAN LEGEND

- | | | |
|----------|----------|---|
| EXISTING | PROPOSED | |
| | | 8" (200mm) TRAFFIC SIGNAL SECTION |
| | | 12" (300mm) TRAFFIC SIGNAL SECTION |
| | | 12" (300mm) PEDESTRIAN SIGNAL SECTION |
| | | 12" (300mm) PEDESTRIAN SIGNAL SECTION |
| | | CONTROLLER CABINET |
| | | SERVICE INSTALLATION |
| | | TELEPHONE INSTALLATION |
| | | VEHICLE DETECTOR, INDUCTION LOOP |
| | | MAGNETIC DETECTOR |
| | | EMERGENCY VEHICLE LIGHT DETECTOR |
| | | CONFIRMATION BEACON |
| | | PUSHBUTTON DETECTOR |
| | | DENOTES NUMBER OF CONDUCTORS.
ALL CABLE NO. 14 EXCEPT AS INDICATED.
ALL LOOP DETECTOR CABLE TO BE SHIELDED. |
| | | GROUND CABLE IN CONDUIT
NO. 6 SOLID COPPER (GREEN) |
| | | FIBER OPTIC CABLE IN CONDUIT
NO. 62.5/125 2-MM12F SM12F |
| | | SIGNAL FACE WITH BACKPLATE.
"P" INDICATES PROGRAMMED HEAD. |
| | | RAILROAD CONTROL CABINET |
| | | ILLUMINATED SIGN
"NO LEFT TURN" |
| | | ILLUMINATED SIGN
"NO RIGHT TURN" |
| | | GROUND ROD AT HANDHOLE (H),
DOUBLE HANDHOLE (H), OR CONTROLLER (C) |
| | | GROUND ROD AT POST (P)
OR MAST ARM POLE (MA) |
| | | GROUND ROD AT ELECTRIC
SERVICE INSTALLATION |

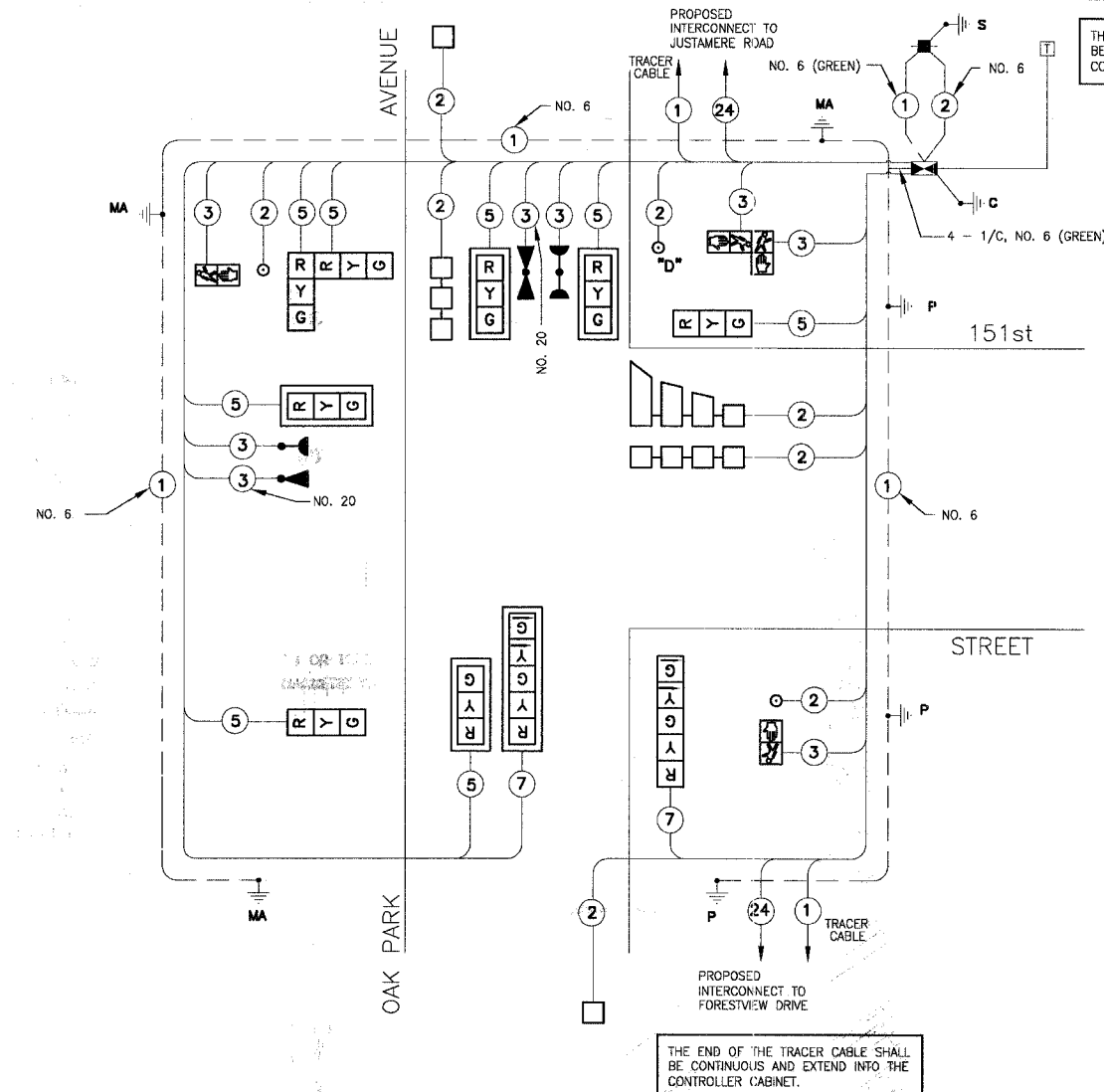
CONTROLLER SEQUENCE



PHASE DESIGNATION DIAGRAM



EMERGENCY VEHICLE PREEMPTION SEQUENCE



CABLE DIAGRAM

NOTES:
PUSHBUTTON "P" SHALL PLACE A CALL IN PHASES 2 AND 8

SCHEDULE OF QUANTITIES

PAY ITEM	UNIT	QUANTITY
SIGN PANEL - TYPE 1	SQ FT	21
CONDUIT IN TRENCH, 2" DIA., GALVANIZED STEEL	FOOT	515
CONDUIT IN TRENCH, 2 1/2" DIA., GALVANIZED STEEL	FOOT	85
CONDUIT IN TRENCH, 3" DIA., GALVANIZED STEEL	FOOT	5
CONDUIT IN TRENCH, 4" DIA., GALVANIZED STEEL	FOOT	10
CONDUIT PUSHED, 2" DIA., GALVANIZED STEEL	FOOT	149
CONDUIT PUSHED, 2 1/2" DIA., GALVANIZED STEEL	FOOT	27
CONDUIT PUSHED, 3" DIA., GALVANIZED STEEL	FOOT	20
CONDUIT PUSHED, 4" DIA., GALVANIZED STEEL	FOOT	171
HANDHOLE	EACH	3
HEAVY DUTY HANDHOLE	EACH	3
DOUBLE HANDHOLE	EACH	1
TRENCH AND BACKFILL FOR ELECTRICAL WORK	FOOT	615
MAINTENANCE OF EXISTING TRAFFIC SIGNAL INSTALLATION	EACH	1
FULL - ACTUATED CONTROLLER AND TYPE V CABINET	EACH	1
TRANSCEIVER - FIBER OPTIC	EACH	1
ELECTRIC CABLE IN CONDUIT, SIGNAL, NO. 14 2C	FOOT	315
ELECTRIC CABLE IN CONDUIT, SIGNAL, NO. 14 3C	FOOT	690
ELECTRIC CABLE IN CONDUIT, SIGNAL, NO. 14 5C	FOOT	1385
ELECTRIC CABLE IN CONDUIT, SIGNAL, NO. 14 7C	FOOT	398
ELECTRIC CABLE IN CONDUIT, LEAD-IN, NO. 14 1 PAIR	FOOT	1083
ELECTRIC CABLE IN CONDUIT, SERVICE, NO. 6, 2C	FOOT	47
TRAFFIC SIGNAL POST, GALVANIZED STEEL, 10 FT.	EACH	1
TRAFFIC SIGNAL POST, GALVANIZED STEEL, 14 FT.	EACH	1
TRAFFIC SIGNAL POST, GALVANIZED STEEL, 16 FT.	EACH	1
STEEL MAST ARM ASSEMBLY AND POLE, 24 FT.	EACH	1
STEEL MAST ARM ASSEMBLY AND POLE, 28 FT.	EACH	1
STEEL MAST ARM ASSEMBLY AND POLE, 48 FT.	EACH	1
CONCRETE FOUNDATION, TYPE A	FOOT	12
CONCRETE FOUNDATION, TYPE D	FOOT	4
CONCRETE FOUNDATION, TYPE E 30" DIAMETER	FOOT	30
CONCRETE FOUNDATION, TYPE E 36" DIAMETER	FOOT	15
TRAFFIC SIGNAL BACKPLATE, LQUVERED	EACH	6
INDUCTIVE LOOP DETECTOR	EACH	5
DETECTOR LOOP, TYPE 1	FOOT	593
LIGHT DETECTOR	EACH	1
LIGHT DETECTOR AMPLIFIER	EACH	3
PEDESTRIAN PUSH BUTTON	EACH	1
TEMPORARY TRAFFIC SIGNAL INSTALLATION	EACH	1
REMOVE ELECTRIC CABLE FROM CONDUIT	FOOT	2771
REMOVE EXISTING TRAFFIC SIGNAL EQUIPMENT	EACH	1
REMOVE EXISTING HANDHOLE	EACH	8
REMOVE EXISTING CONCRETE FOUNDATION	EACH	7
SERVICE INSTALLATION, POLE MOUNT	EACH	1
ELECTRIC CABLE IN CONDUIT, GROUNDING, NO. 6 1C	FOOT	445
ELECTRIC CABLE IN CONDUIT, NO. 20 3/C, TWISTED, SHIELDED	FOOT	288
SIGNAL HEAD, L.E.D., 1-FACE, 3-SECTION, MAST ARM MOUNTED	EACH	5
SIGNAL HEAD, L.E.D., 1-FACE, 3-SECTION, BRACKET MOUNTED	EACH	2
SIGNAL HEAD, L.E.D., 1-FACE, 5-SECTION, BRACKET MOUNTED	EACH	1
SIGNAL HEAD, L.E.D., 1-FACE, 5-SECTION, MAST ARM MOUNTED	EACH	1
SIGNAL HEAD, L.E.D., 2-FACE, 3-SECTION, BRACKET MOUNTED	EACH	1
PEDESTRIAN SIGNAL HEAD, L.E.D., 1-FACE, BRACKET MOUNTED	EACH	2
PEDESTRIAN SIGNAL HEAD, L.E.D., 2-FACE, BRACKET MOUNTED	EACH	1

I.D.O.T. TRAFFIC SIGNAL INSTALLATION ELECTRICAL SERVICE REQUIREMENTS				
TYPE	NO. LAMPS	LED WATTAGE	%OPERATION	WATTAGE
SIGNAL (RED)	12	17	0.50	202
(YELLOW)	12	25	0.25	75
(GREEN)	12	15	0.25	45
ARROW	4	12	0.10	5
PED. SIGNAL	4	25	1.00	100
CONTROLLER	1	100	1.00	100
ILLUM. SIGN	-	40	0.50	-
STREET LIGHTS	-	250	0.50	-
FLASHER	-	-	0.50	-
TOTAL =				422

FOUNDATION (DEPTH)	(FT.)	CABLE SLACK	(FT.)	VERTICAL	(FT.)
TYPE A - POST	4	HANDHOLE	6.5	ALL FOUNDATIONS	3.5
D - CONTROLLER	4	DOUBLE HANDHOLE	13	MAST ARM (L) POLE	20'+L-2'
E - M. ARM POLE	-	SIGNAL POST	2	BRACKET MOUNTED	13
24"	10"	CONTROLLER CAB.	6	PED. PUSHBUTTON	4
30"	15	FIBER OPTIC	13	ELECTRIC SERVICE	13.5
		ELECTRIC SERVICE	1	SERVICE TO GROUND	13.5
		GROUND CABLE	1	POST MOUNTED	6

ENERGY COSTS BILLED TO: ILLINOIS DEPARTMENT OF HIGHWAY DISTRICT 1 (ADDRESS) 201 WEST CENTER COURT SCHAUMBURG, IL 60196-1096

ENERGY SUPPLY CONTACT: JULIE SNOW
PHONE: 1-866-639-3532
COMPANY: COMMONWEALTH EDISON

REVISIONS	
NAME	DATE
RWL	7-1-04
RWL	10-1-04
NJP	4-28-06

ILLINOIS DEPARTMENT OF TRANSPORTATION
TRAFFIC SIGNAL
CABLE AND PHASE DESIGNATION DIAGRAM
OAK PARK AVENUE AT
151st STREET

SCALE: NONE
DATE: 6-1-04

DRAWN BY: UKB
DESIGNED BY: RWL
CHECKED BY: RWL

C:\Land Projects\2004\WAKEFIELD\WAGS\OAKPARK\020146\DWG\05\201416-CABLE.dwg
Plotted: 4/29/06 @ 7:50pm By: 231ub
Copyright © 2004, By: Borter & Wocconon, Inc.
Note: All rights reserved. Professional Design Firm.
Contract No. 00112 - Expires 4-30-05