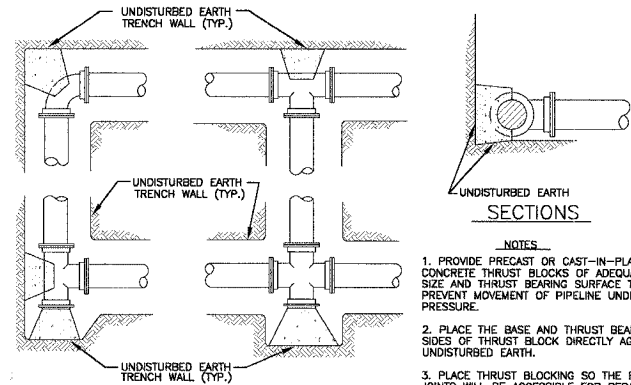


F.A.I. ROUTE NO.	SECTION	COUNTY	TOTAL SHEETS	SHEET NO.
2774	99-00073-00-WR	COOK	116	84
STA.	TO STA.		FED. ROAD DIST. NO. 1	
	ILLINOIS		FED AID PROJECT CMM-7003 (750)	
CONTRACT NO. 83727				

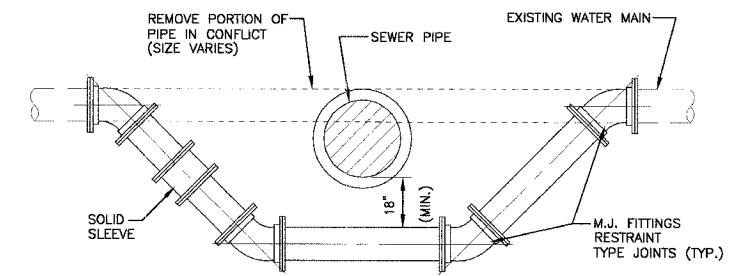
**WATER MAIN GENERAL NOTES**

1. WATER MAIN CONNECTION - (NON-PRESSURE).
  - A. COORDINATE WATER MAIN SHUT DOWN WITH THE OWNER. THE OWNER WILL OPEN AND CLOSE ALL EXISTING VALVES.
  - B. LOCATION OF EXISTING WATER MAIN IS APPROXIMATE ONLY AND CONTRACTOR MUST DETERMINE LOCATION IN THE FIELD. ADJUST CONNECTION LOCATION TO MEET EXISTING PIPE.
  - C. SUCCESSFULLY TEST AND DISINFECT WATER MAIN PRIOR TO MAKING WATER SERVICE CONNECTIONS.
2. CONTRACTOR IS REQUIRED TO MEET PRESSURE TESTING REQUIREMENTS FOR ALL NEW WATER MAINS REGARDLESS OF CONDITION OF EXISTING VALVES. PROVIDE TEMPORARY PLUGS AND BLOCKING AT CONNECTION POINTS IF NECESSARY TO MEET TESTING REQUIREMENTS AT NO ADDITION TO THE CONTRACT.
3. ALL ABANDONED MANHOLE FRAMES, WATER VALVE BOXES, FIRE HYDRANTS, ETC. ARE TO BE DELIVERED TO THE OAK FOREST PUBLIC WORKS DEPARTMENT.
4. EXISTING WATER SERVICE LOCATIONS, IF SHOWN, ARE APPROXIMATE ONLY. EXPLORATORY EXCAVATION IS REQUIRED TO DETERMINE EXACT LOCATION.
5. PROVIDE ALL FITTINGS AND ADAPTORS TO CONNECT NEW 2-INCH CURB STOP TO EXISTING 3/4-INCH OR 1-INCH SERVICE PIPE. PROVIDE NEW CURB STOPS, CORPORATION STOPS AND SERVICE BOXES WHERE NECESSARY. TYPICAL FOR ALL WATER SERVICE CONNECTIONS, UNLESS OTHERWISE NOTED.
6. ALL HYDRANT WORK SHALL BE COORDINATED WITH THE CITY PUBLIC WORKS DEPARTMENT AND THE CITY FIRE DEPARTMENT. CARE SHOULD BE TAKEN TO MINIMIZE THE SHUTDOWN PERIODS FOR MAINTENANCE OF FIRE PROTECTION CAPABILITY.



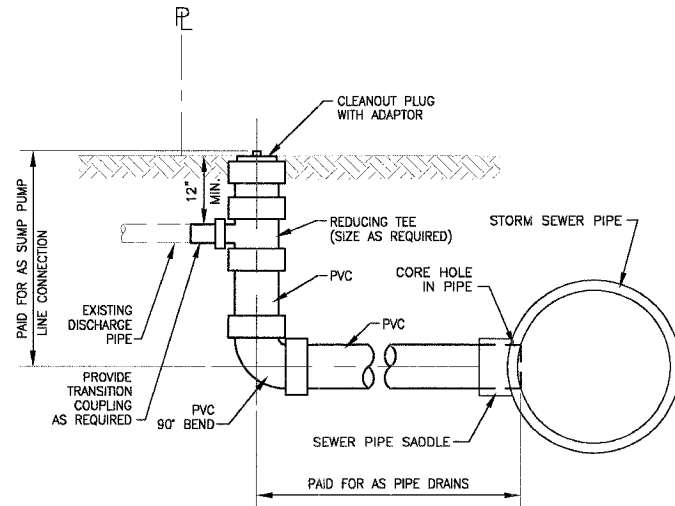
**TYPICAL THRUST BLOCK INSTALLATIONS**  
NO SCALE

- NOTES**
1. PROVIDE PRECAST OR CAST-IN-PLACE CONCRETE THRUST BLOCKS OF ADEQUATE SIZE AND THRUST BEARING SURFACE TO PREVENT MOVEMENT OF PIPELINE UNDER PRESSURE.
  2. PLACE THE BASE AND THRUST BEARING SIDES OF THRUST BLOCK DIRECTLY AGAINST UNDISTURBED EARTH.
  3. PLACE THRUST BLOCKING SO THE FITTING JOINTS WILL BE ACCESSIBLE FOR REPAIR.
  4. USE OF CONCRETE THRUST BLOCK IN LIEU OF RESTRAINED TYPE PIPE JOINTS REQUIRES WRITTEN APPROVAL BY THE VILLAGE OF CARY.

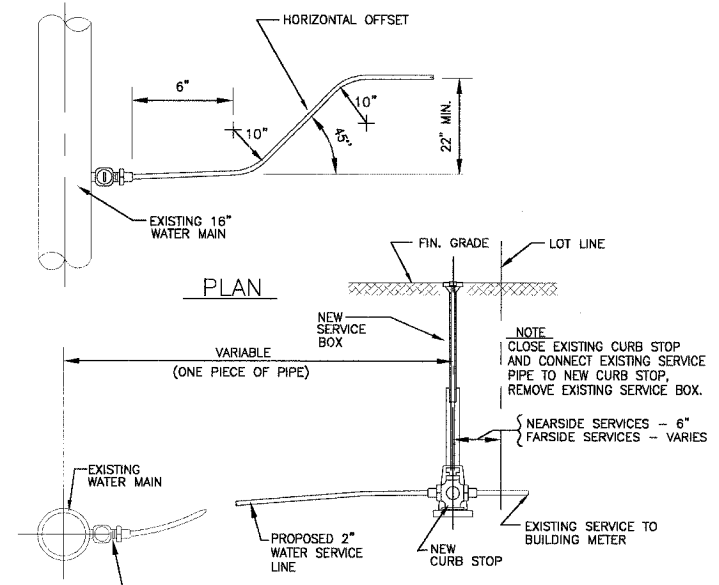


- NOTES:**
1. WATER MAIN RELOCATIONS ARE SUBJECT TO INSPECTION AT NORMAL SYSTEM PRESSURE BEFORE BURIAL.
  2. USE ONLY 45 DEGREE BENDS UNLESS OTHERWISE PERMITTED BY THE ENGINEER.

**WATER MAIN RELOCATION - DUCTILE IRON**  
NO SCALE

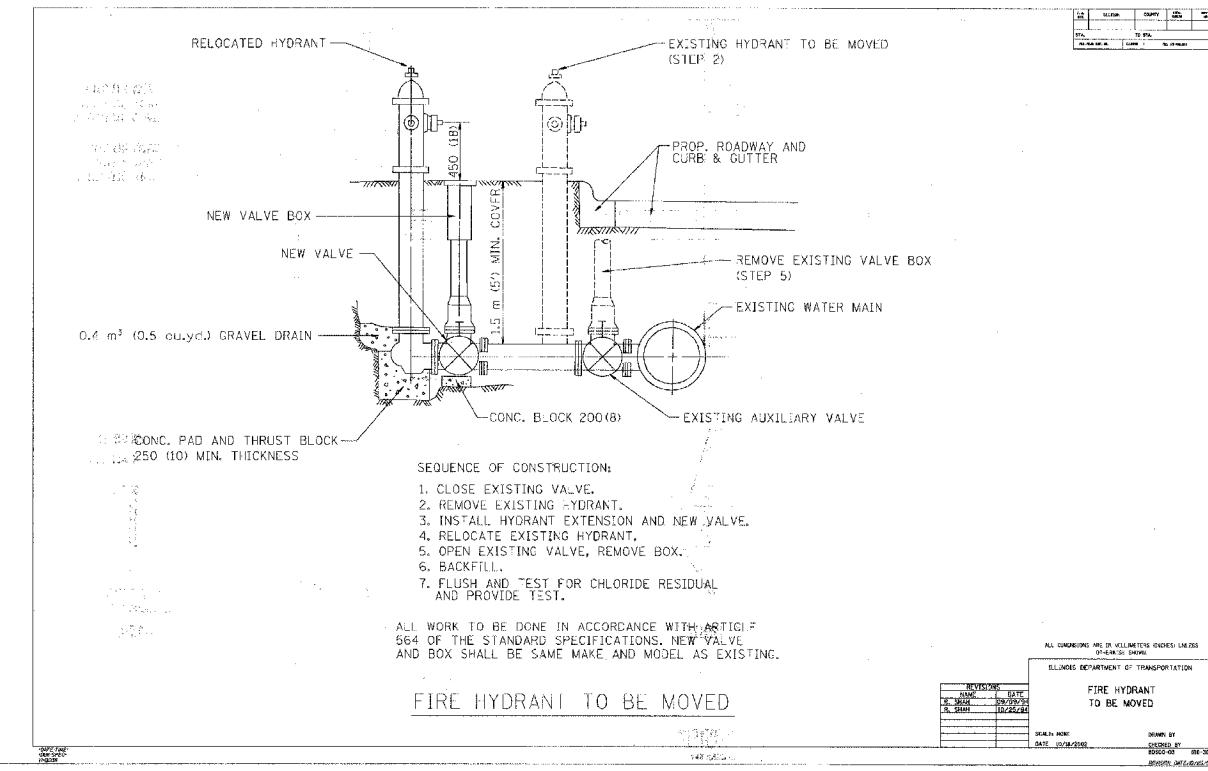


**SUMP PUMP LINE CONNECTION**  
NO SCALE



SERVICE PIPE	CORP. STOP	CURB STOP	SERVICE BOX
2"	2"	2"	1 1/2"

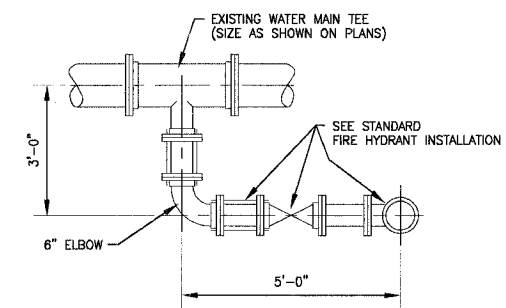
**EXISTING WATER SERVICE RECONNECTION DETAIL**  
NO SCALE



- SEQUENCE OF CONSTRUCTION:**
1. CLOSE EXISTING VALVE.
  2. REMOVE EXISTING HYDRANT.
  3. INSTALL HYDRANT EXTENSION AND NEW VALVE.
  4. RELOCATE EXISTING HYDRANT.
  5. OPEN EXISTING VALVE, REMOVE BOX.
  6. BACKFILL.
  7. FLUSH AND TEST FOR CHLORIDE RESIDUAL AND PROVIDE TEST.

ALL WORK TO BE DONE IN ACCORDANCE WITH ARTICLE 564 OF THE STANDARD SPECIFICATIONS. NEW VALVE AND BOX SHALL BE SAME MAKE AND MODEL AS EXISTING.

**FIRE HYDRANT TO BE MOVED**



**FIRE HYDRANT - 90° CONNECTION**  
(FOR WATER MAIN SIZES GREATER THAN 12")  
NO SCALE

I:\0441\1\201146\1\misc\201146-MISC-DTS.dwg  
 Plotted: 4-29-05 @ 8:19pm By: 231ukb  
 Copyright © 2004, By: Baxter & Woodman, Inc.  
 State of Illinois, Professional Design Firm  
 License No. 184-001121 Expires 4-30-05

CONSULTANTS	REV. NO.	DATE	DESCRIPTION
	1	4-28-06	PER IDOT AND COOK COUNTY COMMENTS

REFER TO EQUIPMENT MANUFACTURER'S SHOP DRAWINGS

**WOODMAN**  
Consulting Engineers

**Baxter & Woodman**  
Crystal Lake, Illinois 815.458.1260  
Burlington, Wisconsin 262.763.7834  
Mokena, Illinois 708.478.5000  
DeKalb, Illinois 815.787.9111  
Garyville, Illinois 815.253.5088  
Rockford, Illinois 815.489.1551  
Plainfield, Illinois 815.609.7425

**CITY OF OAK FOREST, ILLINOIS**  
**OAK PARK AVENUE PROJECT**

**MISCELLANEOUS DETAILS**

DESIGNED BY: NJP  
 DRAWN BY: UKB  
 CHECKED BY: NJP  
 DATE: 1-20-05

SCALE: NONE  
 PROJECT NO.: 020146  
 SHEET NO.: 84 OF 116