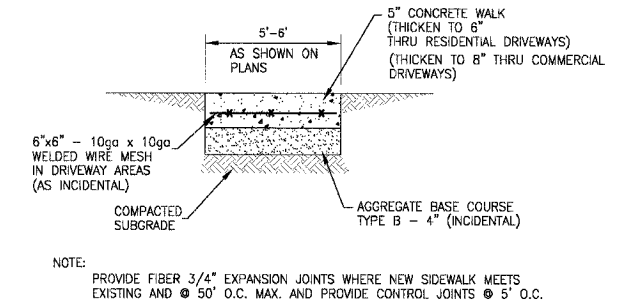
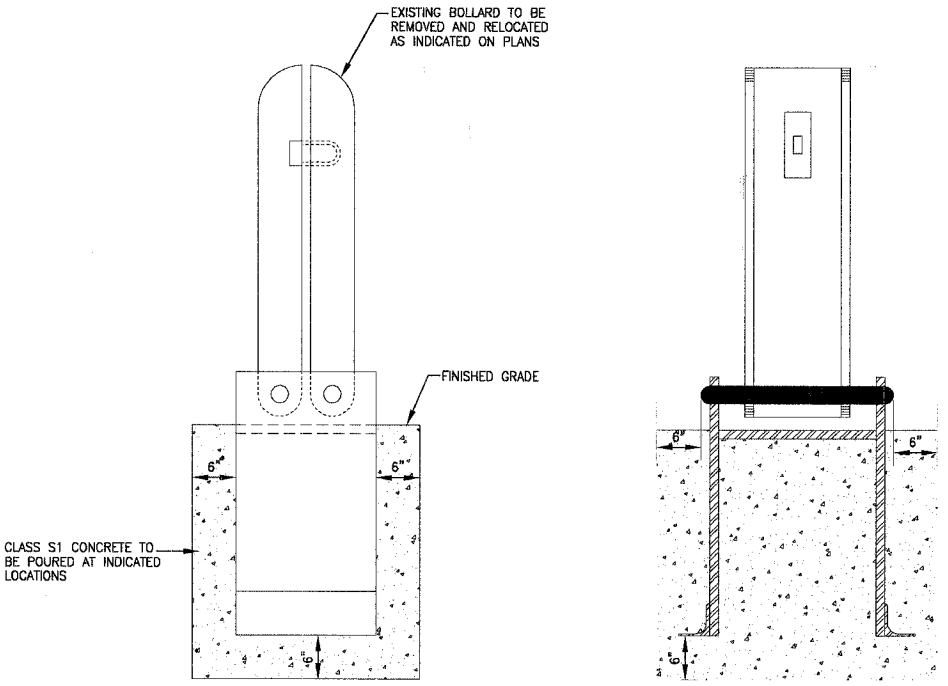
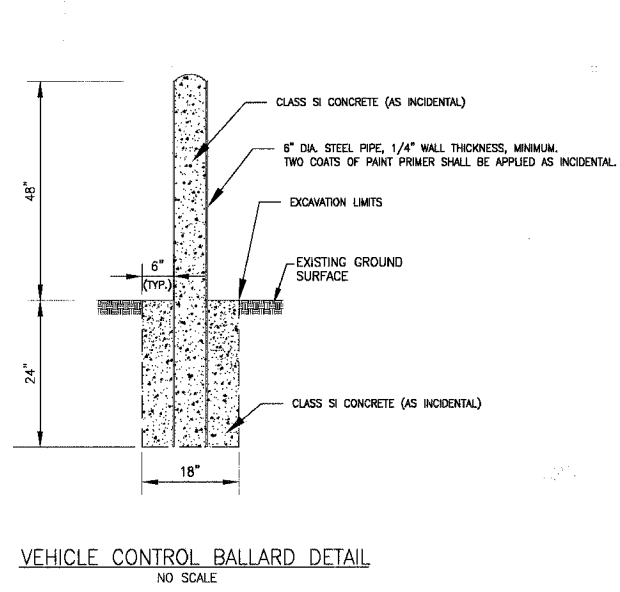
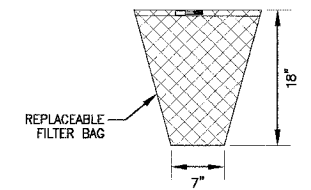
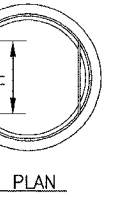
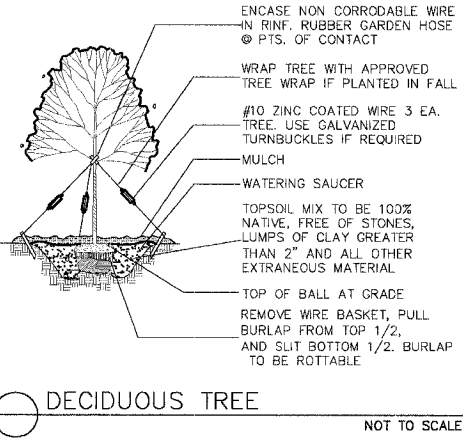


F.A.U. ROUTE NO.	SECTION	COUNTY	TOTAL SHEETS	SHEET NO.
2774	99-00073-00-WR	COOK	116	85
STA.	TO STA.			
FED. ROAD DIST. NO. 1	ILLINOIS		FED AID PROJECT CMM-7003 (750)	
CONTRACT NO. 83727				



NOTE: PROVIDE FIBER 3/4\"/>

P.C.C. SIDEWALK 5", P.C.C. SIDEWALK 6", AND P.C.C. SIDEWALK 8"

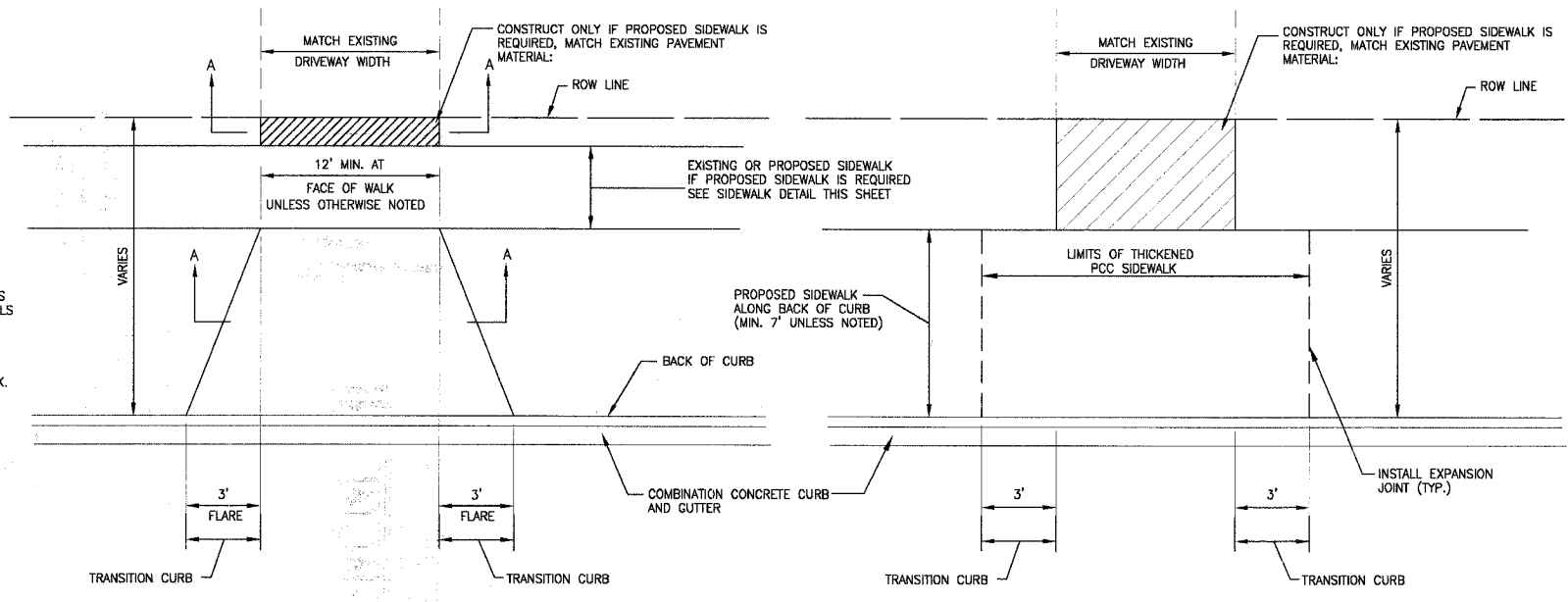


GENERAL NOTES:

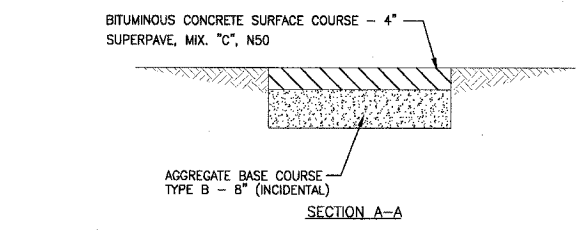
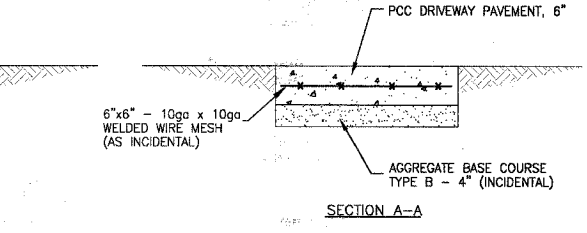
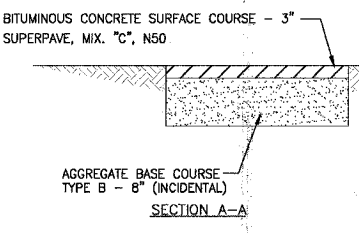
FRAME: TOP RING CONSTRUCTED FROM 1 1/4\"/>

REPLACEABLE BAG: CONSTRUCTED FROM 4 OZ./SQ. YD. NON-WOVEN POLYPROPYLENE GEOTEXTILE REINFORCED WITH POLYESTER MESH. CONNECTED TO BASE RING WITH STAINLESS STEEL STRAP & LOCK.

INLET PROTECTION INLET FILTER NO SCALE



1. IF THE EXISTING DRIVEWAY IS BITUMINOUS CONCRETE, OR PCC, CONSTRUCT MATERIALS SHOWN IN SECTION A-A.
2. IF THE EXISTING DRIVEWAY IS GRAVEL PLACE AGGREGATE SURFACE COURSE TYPE B BEHIND THE PROPOSED SIDEWALK.



RESIDENTIAL DRIVEWAY APPROACH

COMMERCIAL DRIVEWAY APPROACH

DRIVEWAY APPROACH DETAILS NO SCALE

(SEE DRIVEWAY SCHEDULE FOR PROPOSED APRON PAVEMENT TYPE TO BE USED)

P:\01AFT\020146\Draws\20146-MISC-DETS.dwg  
 Plotted: 4/29/06 @ 2:35pm By: jsl/khb  
 Copyright © 2004 by Baxter & Woodman, Inc.  
 License No. 184-00-127 Expires 4-30-05

REV. NO.	DATE	DESCRIPTION
1	4-28-06	PER IDOT AND COOK COUNTY COMMENTS

\* - REFER TO EQUIPMENT MANUFACTURER'S SHOP DRAWINGS

**BAKTER & WOODMAN**  
Consulting Engineers

**Baxter & Woodman**  
Crystal Lake, Illinois 815.489.1200  
Burlington, Wisconsin 920.763.7834  
Mokena, Illinois 708.478.2090  
DeKalb, Illinois 815.787.3111  
Graylake, Illinois 815.223.5088  
Rockford, Illinois 815.489.1551  
Plainfield, Illinois 815.609.7425

**CITY OF OAK FOREST, ILLINOIS**  
**OAK PARK AVENUE PROJECT**

**MISCELLANEOUS DETAILS**

DESIGNED BY: NJP  
DRAWN BY: UKB  
CHECKED BY: NJP  
DATE: 1-20-05

SCALE: NONE  
PROJECT NO.: 020146  
SHEET NO.: 85 OF 116