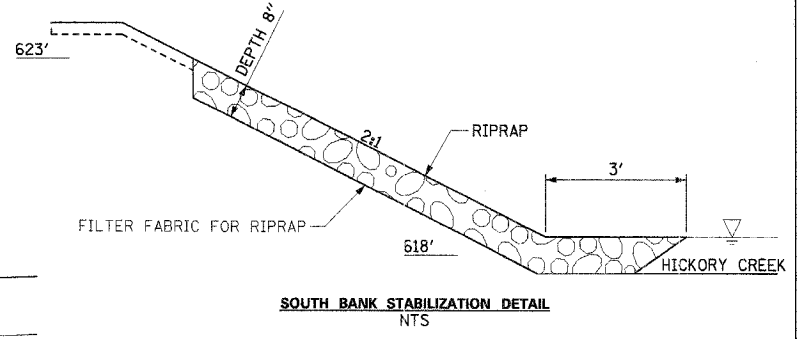
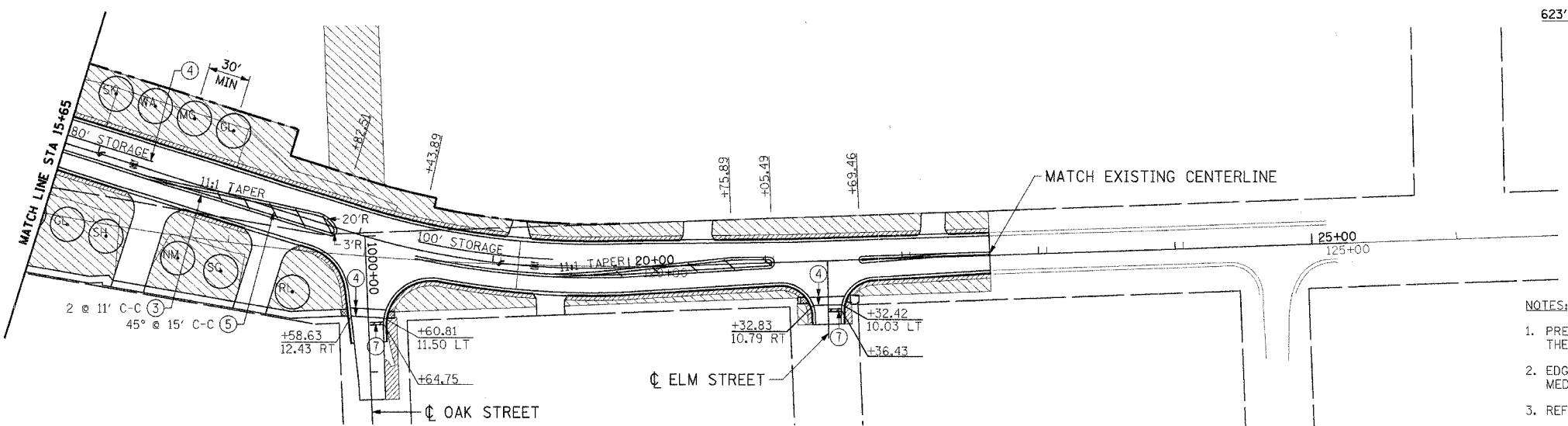
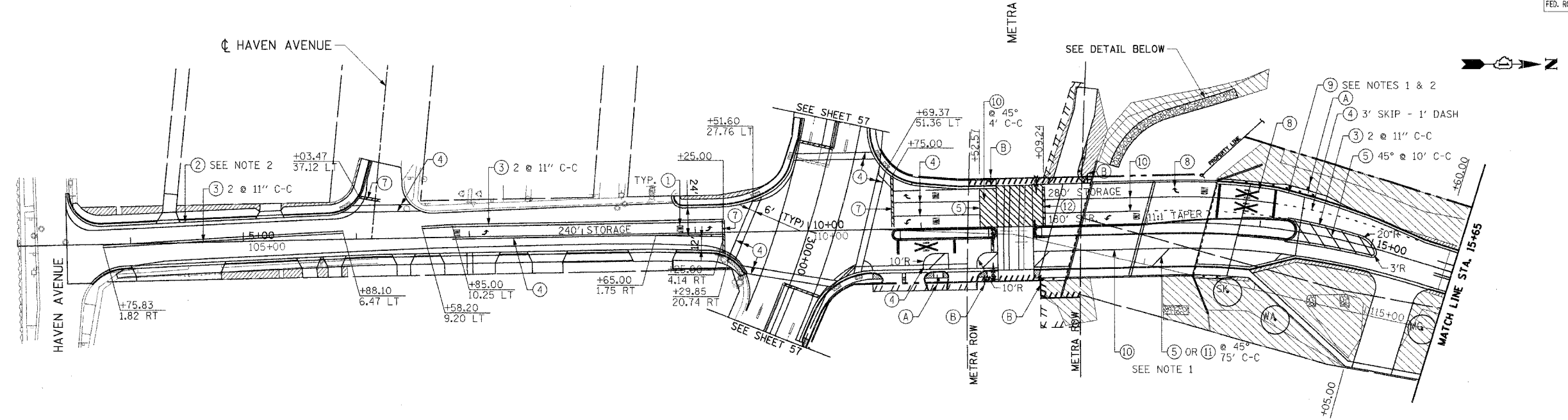


F.A.U. RTE.	SECTION	COUNTY	TOTAL SHEETS	SHEET NO.
0369	97-00025-00-BR	WILL	156	56
STA.	TO STA.			
FED. ROAD DIST. NO.	ILLINOIS	FED. AID PROJECT		
CONTRACT NO: 83757				



NOTES:

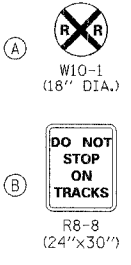
1. PREFORMED PLASTIC PAVEMENT MARKINGS SHALL BE USED ON ALL P.C.C. SURFACES, THERMOPLASTIC PAVEMENT MARKINGS SHALL BE USED ELSEWHERE.
2. EDGE LINES SHALL BE MARKED ALONG THE EDGE OF PAVEMENT AND ALONG THE RAISED MEDIANS THROUGHOUT THE PROJECT AREA.
3. REFER TO IDOT DISTRICT ONE TYPICAL PAVEMENT MARKINGS STANDARDS.
4. FOR EROSION CONTROL PLANS, REFER TO SHEETS 38 TO 43.
5. FOR COMPENSATORY STORAGE AREA LANDSCAPING PLANS, SEE THE DETAIL ON SHEET 57.
6. TREES IN THE PARKWAY SHALL BE PLANTED HALFWAY BETWEEN THE CURB AND SIDEWALK, NO LESS THAN 30 FEET APART, AND AT LEAST TEN FEET FROM ALL DRIVEWAYS.

LEGEND

- |  |   |
|--|---|
| ① THERMOPLASTIC PAVEMENT MARKING LETTERS AND SYMBOLS | ⑥ THERMOPLASTIC PAVEMENT MARKING-LINE 12" (YELLOW)                |
| ② THERMOPLASTIC PAVEMENT MARKING-LINE 4" (WHITE)     | ⑦ THERMOPLASTIC PAVEMENT MARKING-LINE 24" (WHITE)                 |
| ③ THERMOPLASTIC PAVEMENT MARKING-LINE 4" (YELLOW)    | ⑧ PREFORMED PLASTIC PAVEMENT MARKING TYPE A - LETTERS AND SYMBOLS |
| ④ THERMOPLASTIC PAVEMENT MARKING-LINE 6" (WHITE)     | ⑨ PREFORMED PLASTIC PAVEMENT MARKING TYPE A, LINE 4"              |
| ⑤ THERMOPLASTIC PAVEMENT MARKING-LINE 12" (WHITE)    | ⑩ PREFORMED PLASTIC PAVEMENT MARKING TYPE A, LINE 6"              |

- |   |   |
|---|---|
| ⑪ PREFORMED PLASTIC PAVEMENT MARKING TYPE A, LINE 12" | ⑫ PREFORMED PLASTIC PAVEMENT MARKING TYPE A, LINE 24" |
|---|---|
- |               |  |
|---------------|--|
| <b>SYMBOL</b> | <b>TREE TYPE</b>                         |
| GL            | GREENSPIRE LITTLE LEAF LINDEN            |
| MG            | MARSHALL'S SEEDLESS GREEN ASH            |
| NM            | NORWAY MAPLE                             |
| RL            | REDMOND AMERICAN LINDEN                  |
| SG            | SUMMIT GREEN ASH                         |
| SH            | SHADEMASTER THORNLESS COMMON HONEYLOCUST |
| SK            | SKYLINE THORNLESS COMMON HONEYLOCUST     |
| WA            | AUTUMN PURPLE WHITE ASH                  |

- |                    |  |
|--------------------|--|
| [Hatched Pattern]  | SEEDING, CLASS 1 OVER 4" TOPSOIL                     |
| [Diagonal Hatched] | SEEDING, CLASS 1A OVER 4" TOPSOIL                    |
| [Cross-hatched]    | SEEDING, CLASS 4A OVER 4" COMPOST                    |
| [Dotted]           | SEEDING, CLASS 4B AND 5B (50/50 MIX) OVER 4" COMPOST |
| [Stippled]         | RIPRAP   |
| (•)                | PROPOSED TREE  |



REVISIONS	
NAME	DATE

VILLAGE OF NEW LENOX  
F.A.U. (0369) CEDAR ROAD OVER HICKORY CREEK  
WILL COUNTY  
**PAVEMENT MARKINGS & LANDSCAPING I**

SCALE: 1"=50'  
DATE: 07/01/05  
DRAWN BY: PFR  
CHECKED BY: KPS

**TENG**  
TENG & ASSOCIATES, INC.  
390 N. MICHIGAN AVE., CHICAGO, IL 60611  
TELEPHONE: 312.641.0000

I:\PROJECTS\0369 CEDAR RD OVER HICKORY CREEK\0369\_CEDAR\_RD\_OVER\_HICKORY\_CREEK\_PAVEMENT\_MARKINGS\_AND\_LANDSCAPING\_I\0369\_CEDAR\_RD\_OVER\_HICKORY\_CREEK\_PAVEMENT\_MARKINGS\_AND\_LANDSCAPING\_I.dgn  
 7/1/2005 10:20:30 AM  
 TENG & ASSOCIATES, INC.