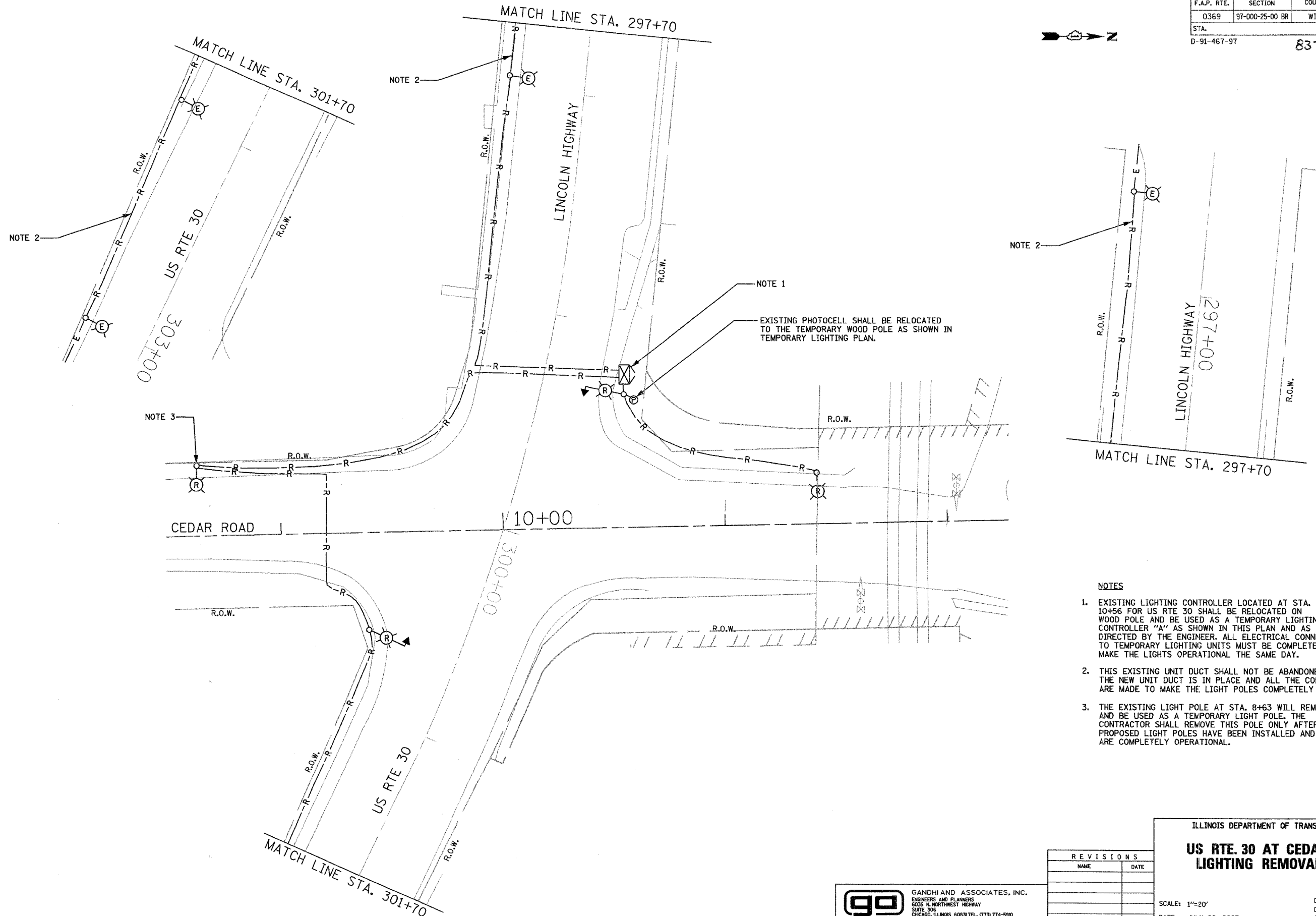
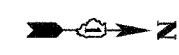


F.A.P. RTE.	SECTION	COUNTY	TOTAL SHEETS	SHEET NO
0369	97-000-25-00 BR	WILL	156	98
STA.	TO STA.			
D-91-467-97	83757			



NOTE 1
EXISTING PHOTOCELL SHALL BE RELOCATED TO THE TEMPORARY WOOD POLE AS SHOWN IN TEMPORARY LIGHTING PLAN.

- NOTES**
- EXISTING LIGHTING CONTROLLER LOCATED AT STA. 10+56 FOR US RTE 30 SHALL BE RELOCATED ON WOOD POLE AND BE USED AS A TEMPORARY LIGHTING CONTROLLER "A" AS SHOWN IN THIS PLAN AND AS DIRECTED BY THE ENGINEER. ALL ELECTRICAL CONNECTIONS TO TEMPORARY LIGHTING UNITS MUST BE COMPLETED TO MAKE THE LIGHTS OPERATIONAL THE SAME DAY.
 - THIS EXISTING UNIT DUCT SHALL NOT BE ABANDONED UNTIL THE NEW UNIT DUCT IS IN PLACE AND ALL THE CONNECTIONS ARE MADE TO MAKE THE LIGHT POLES COMPLETELY OPERATIONAL.
 - THE EXISTING LIGHT POLE AT STA. 8+63 WILL REMAIN AND BE USED AS A TEMPORARY LIGHT POLE. THE CONTRACTOR SHALL REMOVE THIS POLE ONLY AFTER THE PROPOSED LIGHT POLES HAVE BEEN INSTALLED AND ARE COMPLETELY OPERATIONAL.

REVISIONS	
NAME	DATE

ILLINOIS DEPARTMENT OF TRANSPORTATION
US RTE. 30 AT CEDAR ROAD LIGHTING REMOVAL PLAN
SCALE: 1"=20'
DATE: JULY 20, 2005
DRAWN BY: KGP/MAE
DESIGNED BY: MAE/KGP
CHECKED BY: PKG

GO GANDHI AND ASSOCIATES, INC.
ENGINEERS AND PLANNERS
6325 N. NORTHWEST HIGHWAY
SUITE 306
CHICAGO, ILLINOIS 60631 TEL. (773) 714-590