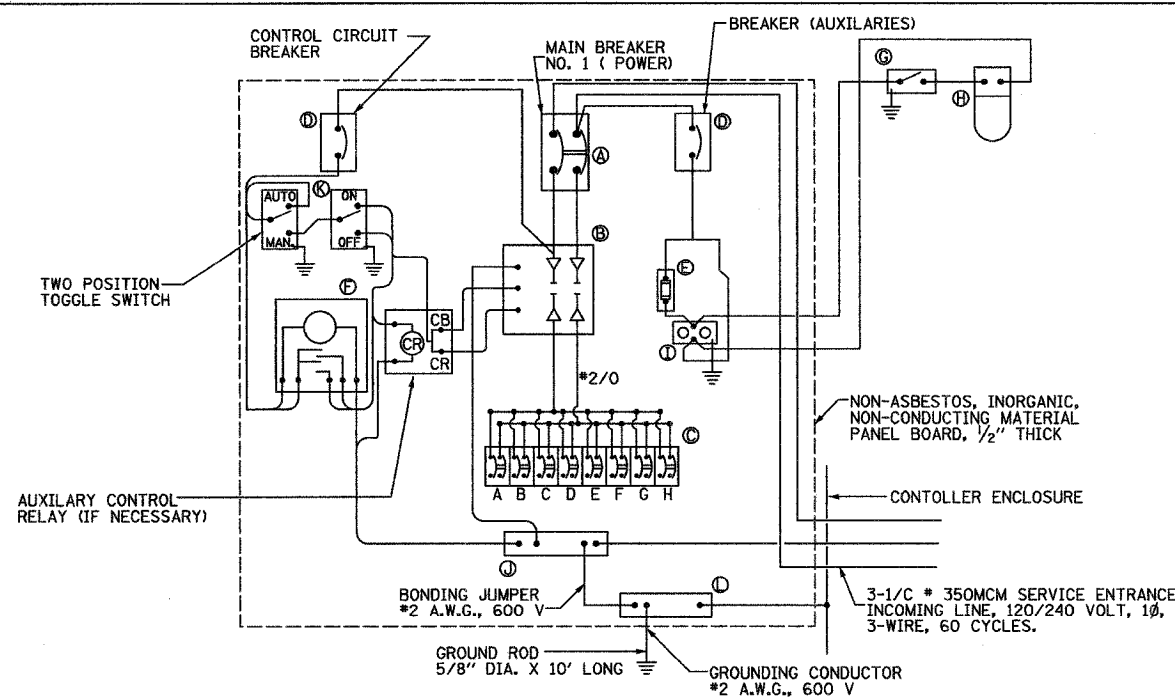


F.A.P. RTE.	SECTION	COUNTY	TOTAL SHEETS	SHEET NO.
0369	97-000-25-00 BR	WILL	156	104
STA.			TO STA.	
D-91-467-97			83757	



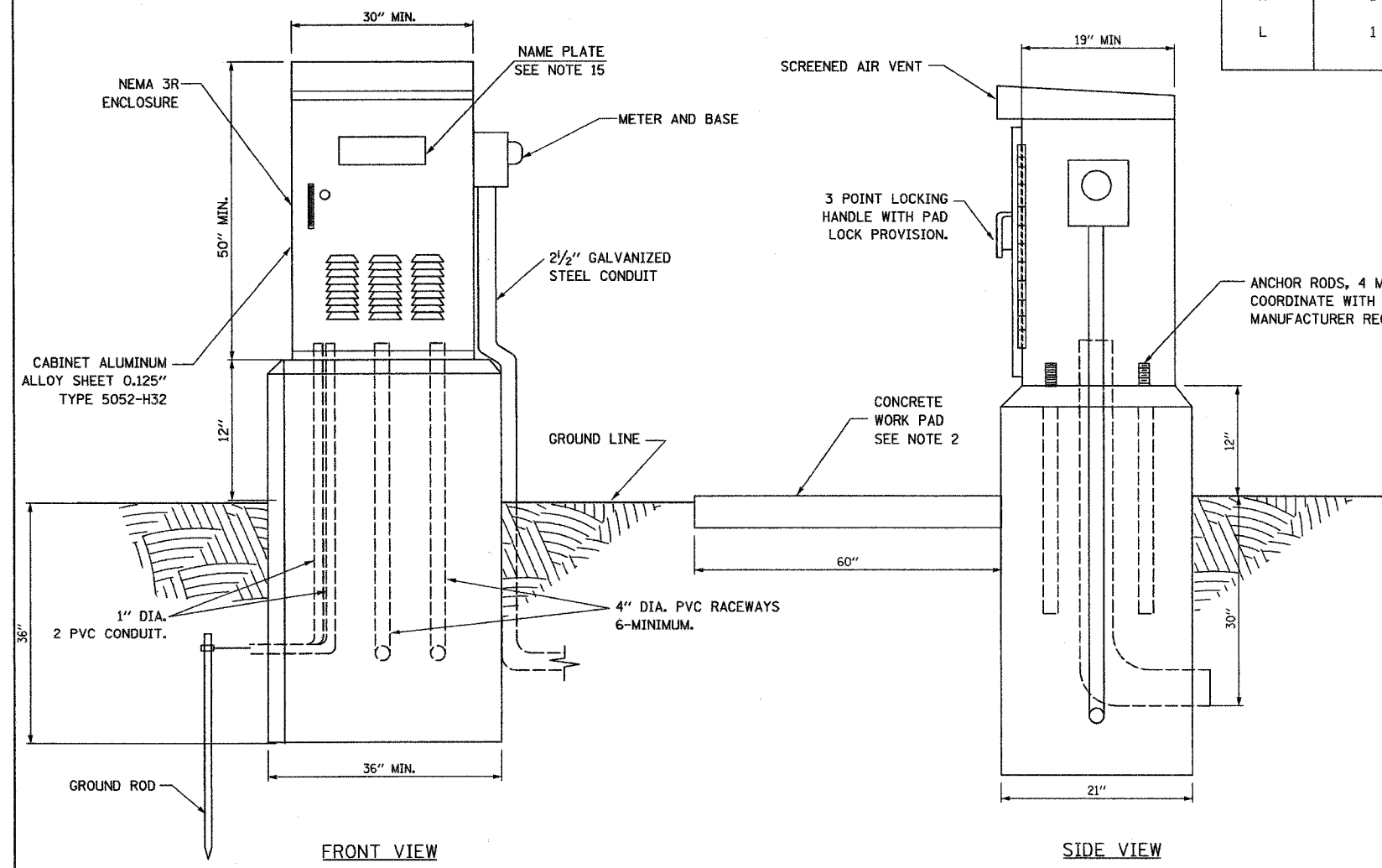
PANEL WIRING DIAGRAM

LIGHTING CONTROLLER PANEL EQUIPMENT

BILL OF MATERIAL		
ITEM	QUANTITY	DESCRIPTION
A	1	MAIN CIRCUIT BREAKER, 2 POLE, 600 VOLT 100 AMP. FRAME, 100 AMP. NON-INTERCHANGEABLE TRIP INTERRUPTING RATING NEMA-22000 AMP. AT 240 VOLT.
B	1	REMOTE CONTROL SWITCH, ELECTRICALLY OPERATED, MECHANICALLY HELD, 2 POLE, SINGLE THROW, 100 AMP., 600 VOLTS CONTROL CIRCUIT 240 VOLT.
C	8	CIRCUIT BREAKERS, 2 POLE, 100 AMP. FRAME, 50 AMP. NON-INTERCHANGEABLE TRIP INTERRUPTING RATING NEMA-10,000 AMP. AT 240 V.
D	2	CONTROL CIRCUIT BREAKER, 1 POLE, 120 V., 100 AMP. FRAME, 15 AMP. NON-INTERCHANGEABLE TRIP INTERRUPTING RATING NEMA-5000 AMP. AT 120 V.
E	1	20 A., 120 V. FUSE.
F	1	ASTRONOMIC MICROPROCESSOR-BASED 2-CHANNEL CONTROLLER (TIME SWITCH).
G	1	SPST 20A SWITCH ON DOOR, TO TURN LIGHT ON WHEN DOOR IS OPEN
H	1	INCANDESCENT LIGHTING FIXTURE ENCLOSED AND GASKETED WITH 60 WATT, 120 V. LAMP.
I	1	20 A., 120 V. DUPLEX RECEPTACLE, GFCI.
J	1	NEUTRAL BUS 1/4" X 1" X 12" LONG MOUNTED ON PANEL WITH LUGS, PROVIDE 4 SPARE LUGS.
K	1	TOGGLE SWITCHES MOUNTED IN 4" X 4" BOX.
L	1	GROUND BUS 1/4" X 1" X 12" LONG MOUNTED ON PANEL WITH LUGS, PROVIDE SPARE LUGS.

NOTES:

- FOUNDATION SIZE SHALL BE COORDINATED WITH CABINET SIZE AND MANUFACTURER.
- IN FRONT OF CONTROL CABINET DOOR, REMOVE VEGETATION AND 2" TOP SOIL. LEVEL THE AREA AND ON TOP PLACE LENGTH WISE PARALLEL TO CONTROL CABINET (NEMA 3R) A CONCRETE PAD 36" X 60" X 4" MINIMUM SIZE. THE COST OF LABOR AND MATERIALS ARE INCLUDED IN THE COST OF THE CONTROLLER.
- DOOR SHALL BE CONSTRUCTED FROM THE SAME TYPE OF MATERIAL AND THICKNESS AS CABINET.
- DOOR SHALL BE EQUIPPED WITH THREE POINT LATCHING MECHANISM WITH NYLON ROLLERS AT TOP AND BOTTOM.
- DOOR HINGE SHALL BE A HEAVY GAUGE CONTINUOUS HINGE WITH A 1/4" DIA. STAINLESS STEEL HINGE PIN.
- ALL EXTERNAL HARDWARE SHALL BE STAINLESS STEEL.
- CONTROL WIRING TO BE #12 AWG, 600V, TYPE "SIS" GRAY SWITCH BOARD WIRE, STRANDED COPPER.
- METER BOX SHALL BE MOUNTED ON THE SIDE OF CONTROL CABINET NEAREST TO THE SERVICE POLE.
- CABINET SHALL BE PRIMED AND PAINTED AS SPECIFIED IN THE IDOT STANDARD SPECIFICATIONS.
- THE HEADS OF CONNECTORS SCREWS SHALL BE PAINTED WHITE FOR NEUTRAL BAR CONNECTION AND GREEN FOR GROUND BAR CONNECTION.
- ALL WIRING WITHIN THE CABINET SHALL BE COLOR CODED AS INDICATED:  
R= RED      BL= BLUE      W= WHITE  
B= BLACK      Y= YELLOW      G= GREEN
- PROVIDE SEALING GROMMETS FOR ALL OPEN WIRING EXTENDED FROM DEVICES IN BOXES OR CABINETS WITHIN THE CONTROL CABINET.
- ALL WIRING SHALL BE NEATLY DRESSED AND SUPPORTED.
- THE CONTROLLER SHALL BE CONSTRUCTED TO U.L. STD. 508 AND BEAR THE U.L. LABEL "ENCLOSED INDUSTRIAL CONTROL PANEL".
- 12" X 16" STAINLESS STEEL EXTERIOR NAMEPLATE SHALL BE ENGRAVED TO "STATE OF ILLINOIS LIGHTING CONTROLS" UNLESS OTHERWISE SPECIFIED.



FRONT VIEW

SIDE VIEW

**GO** GANDHI AND ASSOCIATES, INC.  
ENGINEERS AND PLANNERS  
6035 N. NORTHWEST HIGHWAY  
SUITE 308  
CHICAGO, ILLINOIS 60631 TEL. (773) 774-5900

REVISIONS	
NAME	DATE

ILLINOIS DEPARTMENT OF TRANSPORTATION

**LIGHTING CONTROLLER  
SINGLE DOOR  
CONTROLLERS "A", "B", AND "WE"**

SCALE: NONE      DRAWN BY: KGP/MAE  
DATE: JULY 20, 2005      DESIGNED BY: MAE/KGP  
CHECKED BY: PKG