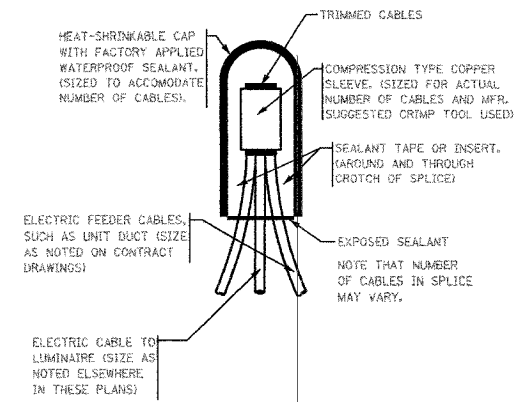
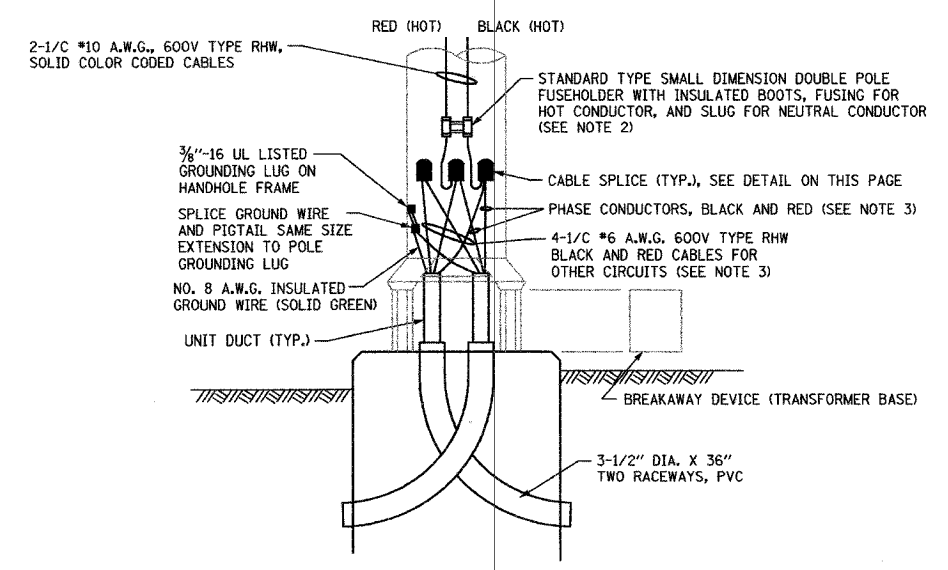


F.A.P. RTE.	SECTION	COUNTY	TOTAL SHEETS	SHEET NO
0369	97-000-25-00 BR	WILL	156	108
STA.		TO STA.		
D-91-467-97		83757		



CABLE SPLICING DETAIL
NOT TO SCALE

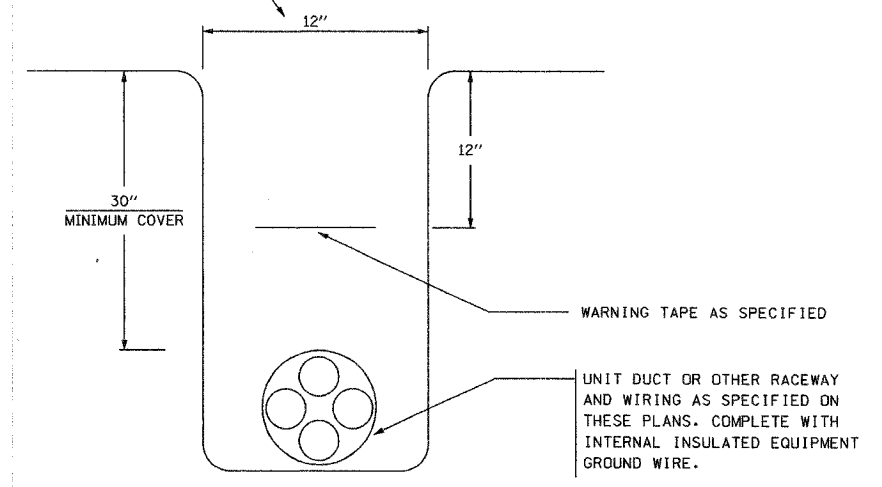


POLE BASE DETAIL
SEE NOTE

NOTES:

1. THIS POLE WIRING DETAIL APPLIES TO ALL THE LIGHT POLES PROPOSED IN THIS PROJECT. THAT INCLUDES THE IDOT MAINTAINED POLES, AND THE VILLAGE OF NEW LENOX POLES.
2. ALL FUSES AND FUSEHOLDERS SHALL COMPLY WITH ARTICLE 1065.01 (A) (C). THE FUSES THAT WILL BE USED SHALL BE SIZED AT 10 AMPERES EACH.
3. PHASE CONDUCTORS, 600 VOLT TYPE RHW, SOLID COLOR, SIZE NO. 6 A.W.G. AS SPECIFIED ON THE PLANS. USE ALTERNATING CIRCUITS FOR LIGHT POLES CONNECTED TO LIGHTING CONTROLLER "B" ONLY, MAINTAINED BY THE VILLAGE OF NEW LENOX.
4. ALL LIGHTING CABLES ARE 600V, TYPE RHW, SOLID COLOR CODED CABLES AS SPECIFIED ON THESE PLANS.
5. THE SYSTEM VOLTAGE AND THE LUMINAIRE VOLTAGE IN THIS PROJECT IS THE SAME, IT IS 240V.

MINIMUM WIDTH EXCEPT AS APPROVED BY THE ENGINEER



TYPICAL WIRING IN TRENCH DETAIL
NOT TO SCALE

GO GANDHI AND ASSOCIATES, INC.
ENGINEERS AND PLANNERS
6035 N. NORTHWEST HIGHWAY
SUITE 305
CHICAGO, ILLINOIS 60631 TEL. (773) 774-5910

REVISIONS	
NAME	DATE

ILLINOIS DEPARTMENT OF TRANSPORTATION

MISC. LIGHTING DETAILS

SCALE: NONE
DATE: JULY 20, 2005

DRAWN BY: KGP/MAE
DESIGNED BY: MAE/KGP
CHECKED BY: PKG