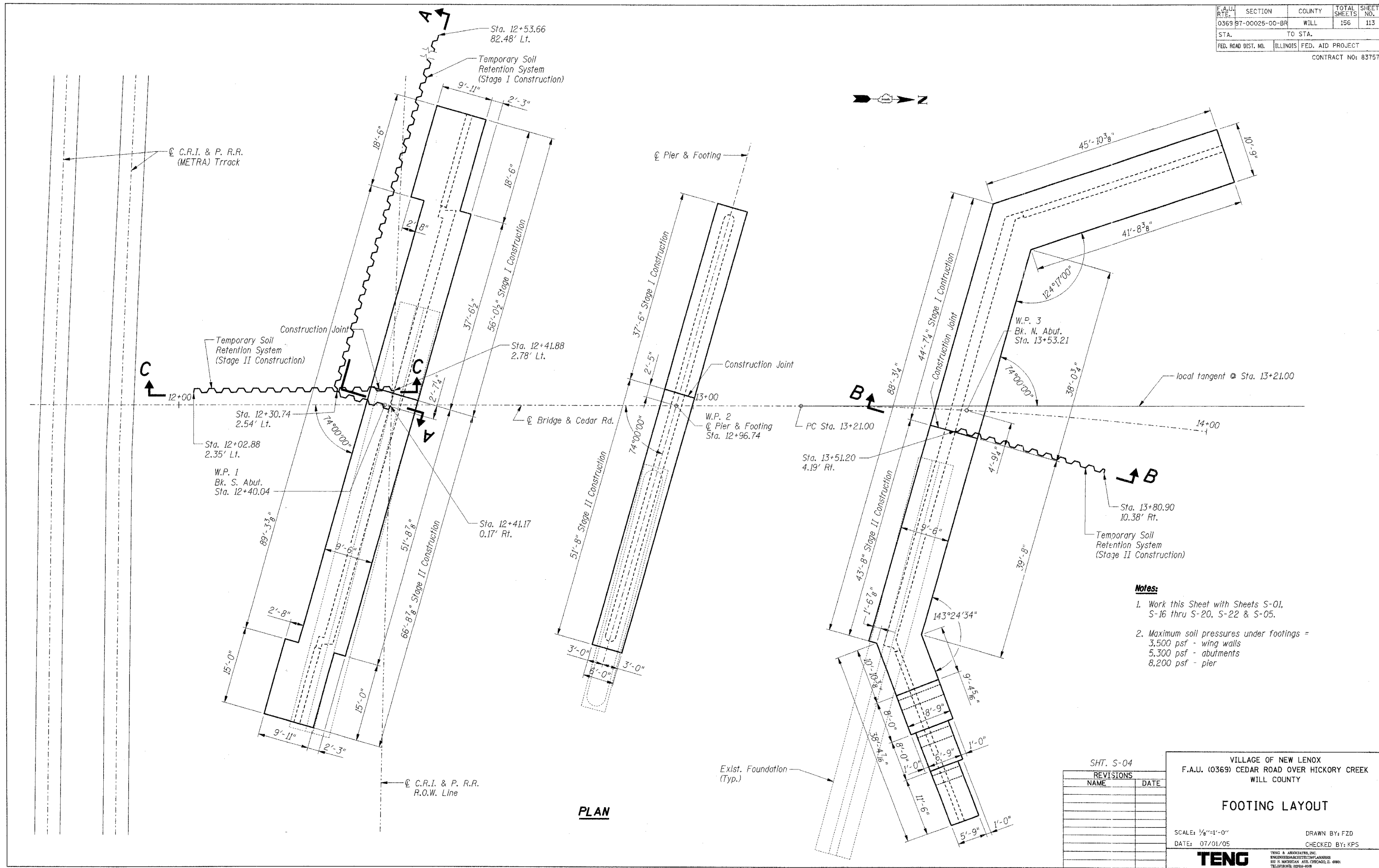


F.A.U. SECTION	COUNTY	TOTAL SHEETS	SHEET NO.
0369 B7-00025-00-BR	WILL	156	113
STA. TO STA.			
FED. ROAD DIST. NO.	ILLINOIS FED. AID PROJECT		
CONTRACT NO: 83757			



PLAN

- Notes:**
1. Work this Sheet with Sheets S-01, S-16 thru S-20, S-22 & S-05.
 2. Maximum soil pressures under footings =
 3,500 psf - wing walls
 5,300 psf - abutments
 8,200 psf - pier

SHT. S-04

REVISIONS	
NAME	DATE

VILLAGE OF NEW LENOX
 F.A.U. (0369) CEDAR ROAD OVER HICKORY CREEK
 WILL COUNTY

FOOTING LAYOUT

SCALE: 1/4" = 1'-0"
 DATE: 07/01/05

DRAWN BY: FZD
 CHECKED BY: KPS

TENG
TENG & ASSOCIATES, INC.
 ENGINEERS ARCHITECTS PLANNERS
 302 N. MICHIGAN AVE. CHICAGO, IL 60601
 TELEPHONE: 312.664.4000

S:\PROJECTS\0369\STRUCT\0369FOOTING.DWG
 DATE: 07/01/05
 DRAWN BY: FZD
 CHECKED BY: KPS
 PROJECT: VILLAGE OF NEW LENOX, CEDAR ROAD OVER HICKORY CREEK
 COUNTY: WILL COUNTY
 CONTRACT NO: 83757